

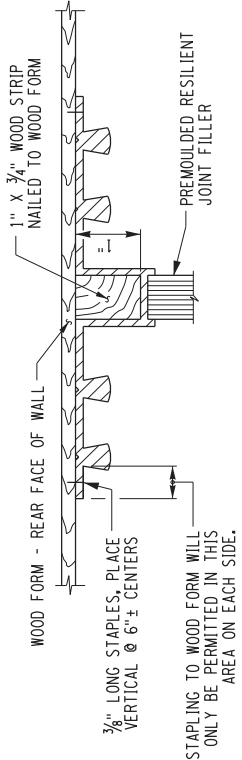
TYPE D WATERSTOP

NOT TO SCALE

NOTES:

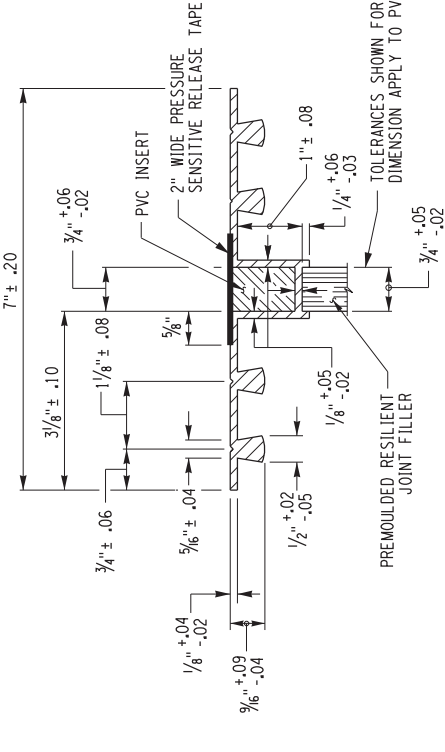
HOLES MUST NOT BE MADE IN WATERSTOP FOR ANY PURPOSE EXCEPT AS REQUIRED FOR STAPLING TO FORMS.

TYPE D WATERSTOP SHALL BE LIGHT GRAY IN COLOR.



STAGE ONE - PRIOR TO POURING CONCRETE

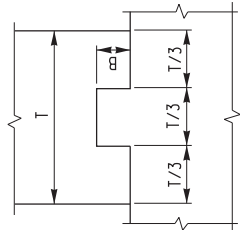
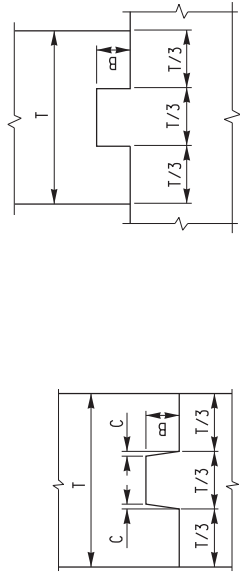
Control joint is similar to expansion joint except there's no joint filler and a Type D waterstop is used



STAGE TWO - AFTER FORMS HAVE BEEN REMOVED

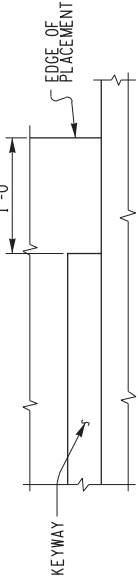
TYPE E WATERSTOP

NOT TO SCALE



12"x 12" GALVANIZED STEEL WIRE MESH, WWF 4 x 4- W4 ANCHORED FIRMLY TO BACK FACE OF WALL

6" DIA. WEEP HOLE SCH. 40, PVC PIPE



CONSTRUCTION AND CONTRACTION JOINTS

C	B	T/3
3/8"	1 1/2"	0 TO 6"
3/8"	3/2"	6" TO 10"
3/4"	5/2"	10" AND OVER

EXPANSION JOINTS

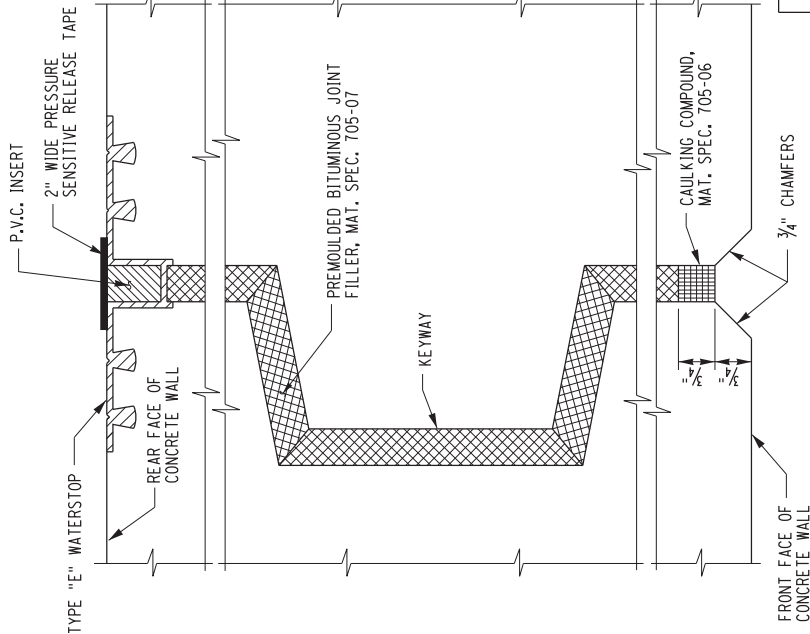
C	B	T/3
3/8"	3 1/2"	0 TO 10"
3/4"	5 1/2"	10" AND OVER

KEYWAY DETAILS

NOT TO SCALE

WEEP HOLE DETAIL

NOT TO SCALE



TYPICAL EXPANSION JOINT PLAN

NOT TO SCALE

RELEASE FOR CONSTRUCTION

AS-BUILT REVISIONS
DESCRIPTION OF ALTERATIONS:

- NOTES:
- HOLES MUST NOT BE MADE IN WATERSTOP FOR ANY PURPOSE EXCEPT AS REQUIRED FOR STAPLING TO FORMS.
 - TYPE E WATERSTOP AND PVC INSERT SHALL BE LIGHT GRAY IN COLOR. PVC INSERT SHALL BE CLOSED CELL POLYVINYL (SPI) GRADE VE-45 AS PER ASTM D1667 OR CLOSED CELL RUBBER GRADE RE-45, CLASS E, AS PER ASTM D1056.
 - PVC INSERT AND PRESSURE SENSITIVE RELEASE TAPE SHALL BE INSTALLED IN THE FIELD PRIOR TO PLACING THE BACKFILL.

- NOTES:
- PVC USED IN WATERSTOPS SHALL CONFORM TO THE REQUIREMENTS OF N.Y.S. STANDARD SPECIFICATIONS SUBSECTION 705-11.
 - THE COST OF FURNISHING AND PLACING WATERSTOPS SHALL BE INCLUDED IN THE UNIT PRICES BID FOR THE CONCRETE ITEMS.
 - FIELD SPLICES SHOULD BE AVOIDED IF POSSIBLE, HOWEVER, HEAT WELDED BUTT SPLICES WILL BE PERMITTED ON LONG STRAIGHT RUNS (GENERALLY IN EXCESS OF 50 FEET) AT POINTS APPROVED BY THE ENGINEER.
 - WATERSTOP SHALL BE SHIPPED IN STRAIGHT SECTIONS HAVING A MINIMUM LENGTH OF 10 FEET UNLESS SHORTER LENGTHS ARE REQUIRED.
 - PREMOULDED RESILIENT JOINT FILLER SHALL CONFORM TO THE REQUIREMENTS OF N.Y.S. STANDARD SPECIFICATION SUBSECTION 705-07.
 - DETAILS ON THE DRAWINGS LABELED AS "NOT TO SCALE" ARE INTENTIONALLY DRAWN NOT TO SCALE FOR VISUAL CLARITY. ALL OTHER DETAILS, FOR WHICH NO SCALE IS SHOWN, ARE DRAWN PROPORTIONAL AND ARE FULLY DIMENSIONED.
 - DETAILS ON THE DRAWINGS LABELED AS "NOT TO SCALE" ARE INTENTIONALLY DRAWN NOT TO SCALE FOR VISUAL CLARITY. ALL OTHER DETAILS, FOR WHICH NO SCALE IS SHOWN, ARE DRAWN PROPORTIONAL AND ARE FULLY DIMENSIONED.

IT IS A VIOLATION OF LAW FOR ANY PERSON, UNLESS THEY ARE ACTING UNDER THE DIRECTION OF A LICENSED PROFESSIONAL ENGINEER, ARCHITECT, OR PROFESSIONAL SURVEYOR, TO ALTER, MODIFY, OR CHANGE IN ANY WAY, IF AN ITEM BEARING THE STAMP OF A LICENSED PROFESSIONAL IS ALTERED, THE ALTERING ENGINEER, ARCHITECT, OR PROFESSIONAL SURVEYOR SHALL STAMP THE DOCUMENT AND INCLUDE THE NOTATION "ALTERED BY" FOLLOWED BY THEIR SIGNATURE, THE DATE OF SUCH ALTERATION, A