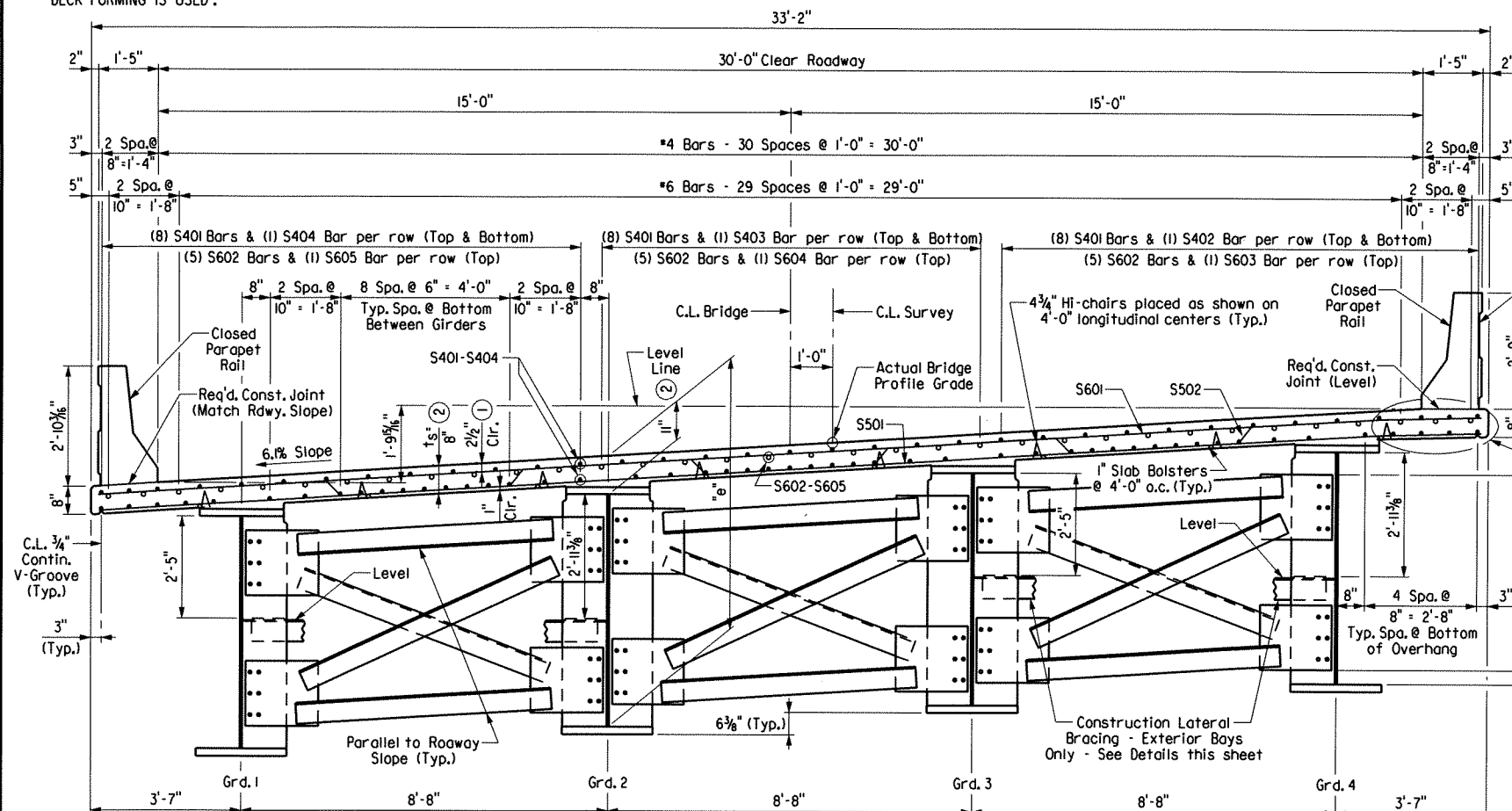


- ① TOLERANCE:
Minus = $\frac{1}{4}$ "
Plus = Equal to amount of slab thickening used to meet slab thickness tolerance - see "ADJUSTMENT FOR SLAB THICKNESS TOLERANCE WHEN REMOVABLE DECK FORMING IS USED".
- ② See "ADJUSTMENT FOR SLAB THICKNESS TOLERANCE WHEN REMOVABLE DECK FORMING IS USED".



"e" = 6'-5" + Bottom Flange Thickness

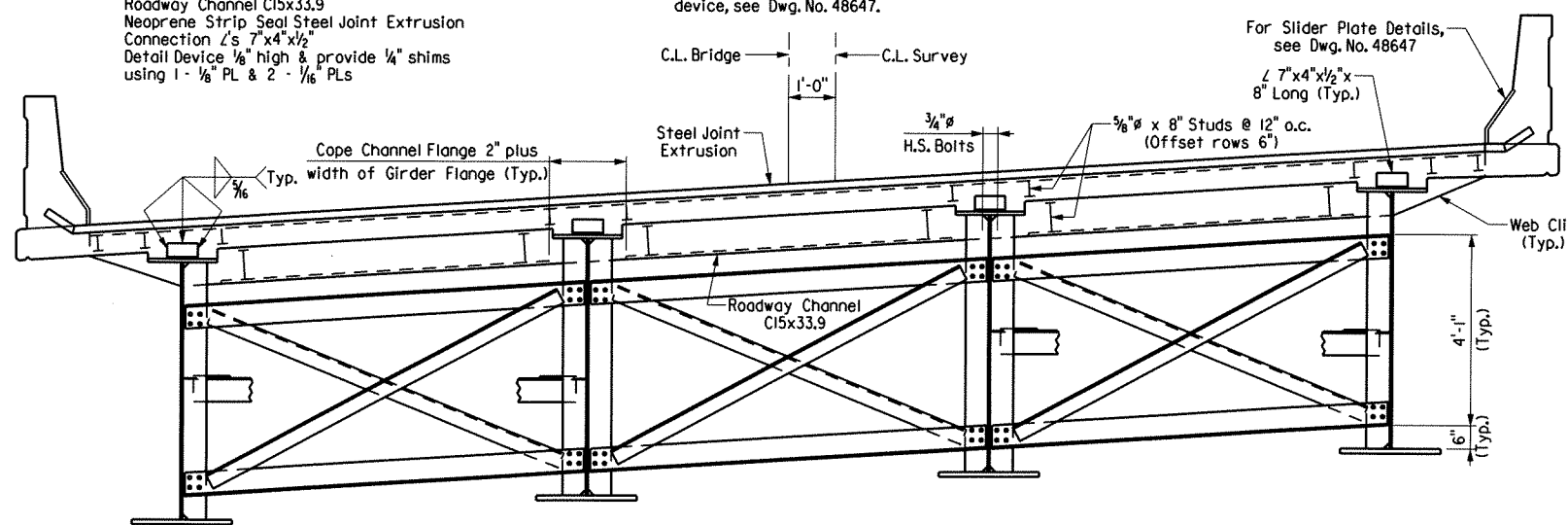
TYPICAL ROADWAY SECTION

(Looking Ahead)
Scale: $\frac{1}{2}$ " = 1'-0"

Note: Crossframe shown is typical only at intermediate bent.

Expansion Devices:
Roadway Channel C15x33.9
Neoprene Strip Seal Steel Joint Extrusion
Connection L's 7"x4"x $\frac{1}{2}$ "
Detail Device $\frac{1}{8}$ " high & provide $\frac{1}{4}$ " shims
using 1 - $\frac{1}{8}$ " PL & 2 - $\frac{1}{16}$ " PLs

Note: For additional details of expansion device, see Dwg. No. 48647.



VIEW @ C.L. JOINT

(Looking Ahead)
Scale: $\frac{1}{2}$ " = 1'-0"

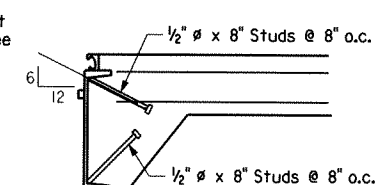
SLAB REINFORCING

Transverse: S502 @ 12" o.c. (Bent up over girders)
S601 @ 12" o.c. (Top)
S501 @ 12" o.c. (Bottom)
Longitudinal: S401 - S404 @ 12" o.c. (Top)
S401 - S404 Place as shown (Bottom)
S602 - S605 (Top)

Note: For additional reinforcing details, see Dwg. No. 48645.

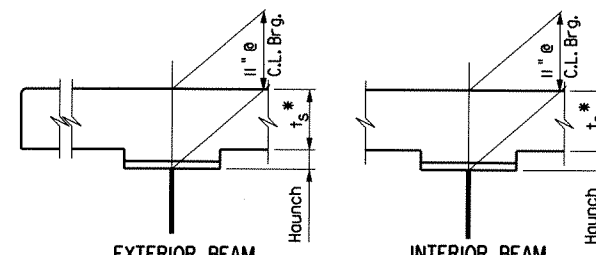
Note: Class I Protective Surface Treatment shall be applied to the Roadway Surface and the Face and Top of Concrete Parapet Rail.

Note: One #5 bar in the top and one #5 bar in the bottom may be substituted for each bar S502. Payment will be based on the weight of bars S502.



DETAIL OF ALTERNATE ANCHORS

No Scale



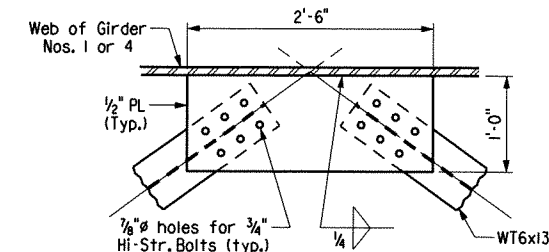
Note: t_s = slab thickness as shown on "TYPICAL SECTION".
*Tolerance when removable deck forming is used is $\pm \frac{1}{2}$ ", $\pm \frac{1}{4}$ ".
Haunch forming is required and shall be adjusted to maintain slab thickness tolerance.

ADJUSTMENT FOR SLAB THICKNESS TOLERANCE WHEN REMOVABLE DECK FORMING IS USED

No Scale

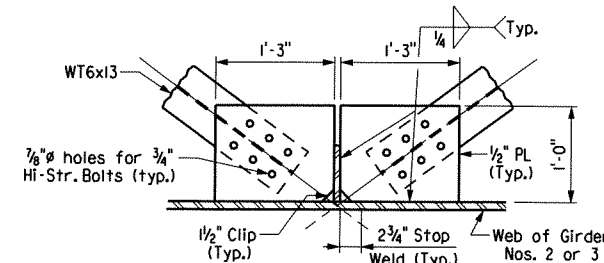
Haunch dimension may vary within the following limits to maintain the grade and slab thickness tolerance; Minimum - top flange thickness plus $\frac{3}{8}$ "; Maximum - top flange thickness plus $2\frac{1}{2}$ ". No increase in concrete and structural steel quantities will be made to maintain tolerances.

Tolerances shown are applicable only when removable deck forming is used. See Std. Dwg. No. 14991 for tolerances when permanent steel deck forms are used. Payment for concrete shall be based on removable deck forming.



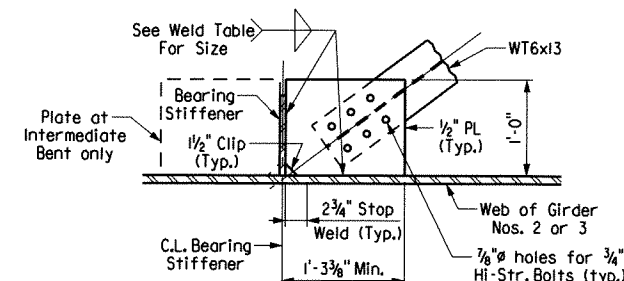
TYPICAL LATERAL BRACE CONNECTION

@ GIRDER NOS. 1 & 4



TYPICAL LATERAL BRACE CONNECTION

@ GIRDER NOS. 2 & 3



TYPICAL LATERAL BRACE CONNECTION @ BEARING

SHEET 1 OF 7
DETAILS OF 327'-0" CONTINUOUS
COMPOSITE PLATE GIRDER UNIT
COUNTY ROAD 8 BRIDGE

ROUTE 71 SEC.
ARKANSAS STATE HIGHWAY COMMISSION
LITTLE ROCK, ARK.

DRAWN BY: JAP DATE: 03-06 FILENAME: b040478ml.sil.dgn
CHECKED BY: PJS DATE: 05-08 SCALE: AS SHOWN
DESIGNED BY: PJS DATE: 03-06
BRIDGE NO. 07079 DRAWING NO. 48640

