

TYPE	YEAR	PROJECT NO.	SHEET NO.
CONST	2016	79034-4217-04	7

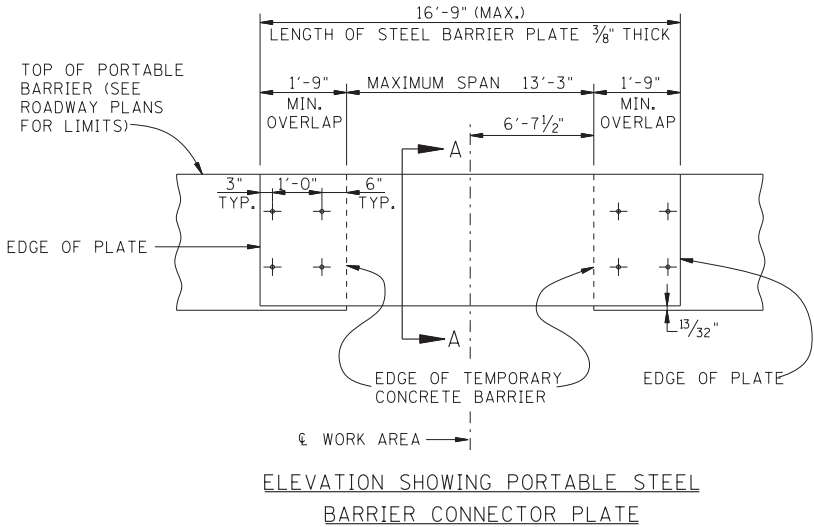
CONSTRUCTION SIGNS - 2.51						
DESCRIPTION	MUTCD. NO.	SIZE	SR 205		BID QUANTITY	TOTAL SQ. FT.
			PHASE I	PHASE II		
			1	1		
END ROAD WORK	G20-2	48"X24"	2	2	2	16
STOP HERE ON RED	R10-6	24"X36"	2	2	2	12
STAY IN LANE TO EXTEND GREEN	R10-6 (MOD.)	30"X42"	2	2	2	18
REVERSE CURVE	W1-4AR	48"X48"	1	1	1	16
SIGNAL AHEAD (SYMBOL)	W3-3	48"X48"	2	2	2	32
BE PREPARED TO STOP	W3-4	48"X48"	2	2	2	32
ROAD NARROWS	W5-1	48"X48"	2	2	2	32
1000 FT.	W16-2	24"X12"	2	2	2	4
ROAD WORK 500 FT.	W20-1	48"X48"	2	2	2	32
ROAD WORK 1000 FT.	W20-1	48"X48"	2	2	2	32
ROAD WORK 1500 FT.	W20-1	48"X48"	2	2	2	32
ROAD WORK 1/2 MILE	W20-1	48"X48"	2	2	2	32
ONE LANE ROAD 1500 FT.	W20-4	48"X48"	2	2	2	32
FLAGGER	W20-7A	48"X48"	2	2	2	32
MAINTAIN XX MPH SPEED	-	36"X42"	2	2	2	21
MAXIMUM X MIN. RED	-	48"X42"	2	2	2	28
		TOTAL				403

TRAFFIC CONTROL QUANTITIES - 2.51					
ITEM NO.	DESCRIPTION	UNIT	SR205		TOTAL
			PHASE I	PHASE II	
			1	1	
705-04.50	PORTABLE BARRIER RAIL DELINEATOR	EACH	98	98	98
705-08.51	PORTABLE IMPACT ATTENUATOR (NCHRP 350-TL3)	EACH	2	2	2
712-01	TRAFFIC CONTROL	L.S.	0.25	0.25	0.5
712-02.02	INTERCONNECTED PORTABLE BARRIER RAIL	L.F.	1110	1110	1110
712-04.01	FLEXIBLE DRUMS (CHANNELIZING)	EACH	18	18	18
712-06	SIGNS (CONSTRUCTION)	SQ. FT.	403	403	403
712-07.03	TEMPORARY BARRICADES (TYPE III)	L.F.	20	50	50
712-09.01	REMOVABLE PAVEMENT MARKING LINE	L.F.	5445	5445	6890
712-09.04	REMOVABLE PAVEMENT MARKING (STOP LINE)	L.F.	22	22	22
713-16.01	CHANGEABLE MESSAGE SIGN UNIT	EACH	2	2	2
730-40	TEMPORARY TRAFFIC SIGNAL SYSTEM	EACH	1	1	1

NOTES:

1. THE CONSTRUCTION SIGNING PLANS ON SHEETS 5 THRU 6 ARE TO SERVE AS A GUIDE ONLY. OTHER SIGNS MAY BE REQUIRED DURING VARIOUS PHASES OF CONSTRUCTION.
2. THE TRAFFIC CONTROL PLANS DO NOT RELIEVE THE CONTRACTOR OF THE RESPONSIBILITY FOR INSTALLING TRAFFIC CONTROL DEVICES IN ACCORDANCE WITH THE CURRENT EDITION OF THE "MANUAL OF UNIFORM TRAFFIC CONTROL DEVICES."
3. IF ADDITIONAL SIGNS ARE DEEMED NECESSARY BY THE ENGINEER, THEY SHALL BE FURNISHED AND INSTALLED AT THE UNIT PRICE BID FOR ITEM NO. 712-06, SIGNS (CONSTRUCTION), SQ. FT.
4. DELINEATORS SHALL BE PLACED AT 20' O.C. BOTH ON TOP OF THE BARRIER AND ON THE SIDE TOWARDS THE TRAFFIC.

TRAFFIC CONTROL QUANTITIES

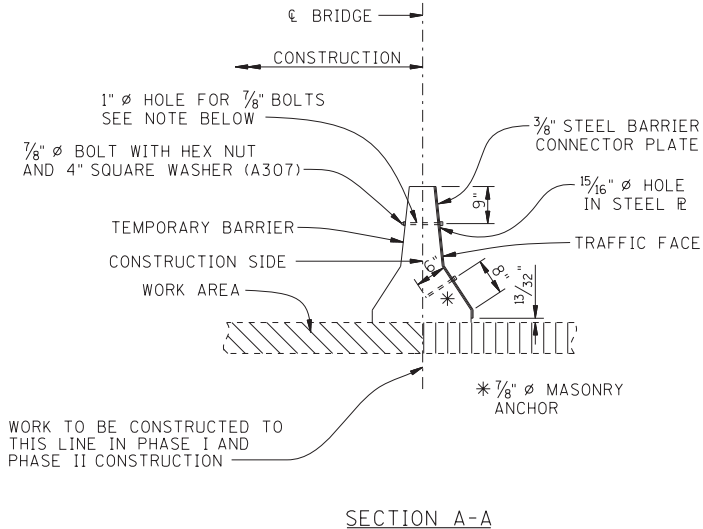


NOTE:

CONTRACTOR SHALL INSTALL A 3/8" THICK STEEL CONNECTOR PLATE TO THE PORTABLE CONCRETE BARRIERS IN AREAS WHERE NEEDED TO FACILITATE CONSTRUCTION. THE STEEL CONNECTOR PLATES ARE TO BE REMOVED AND REPLACED IN PHASE I AND PHASE II CONSTRUCTION. DETAILS SHOWN ARE FOR PHASE I CONSTRUCTION. THE CONNECTOR PLATES SHALL BE USED ON THE OPPOSITE SIDE DURING PHASE II CONST. 1" DIA. HOLES MAY BE REUSED FOR PHASE II CONSTRUCTION WITH NEW HOLES FOR BOTTOM MASONRY ANCHORS.

NOTE:

1" DIA. HOLES FOR THE MASONRY ANCHOR AND 1" DIA. HOLES FOR 7/8" DIA. BOLTS SHALL BE DRILLED WITH A HIGH SPEED DRILL. THE DRILL BIT SHALL BE CAPABLE OF DRILLING THROUGH EXISTING REINFORCING BARS AND CONCRETE.



NOTE:

COST OF THE 3/8" THICK STEEL CONNECTOR PLATES, ALL BOLTS WITH HEX NUTS AND WASHERS, MASONRY ANCHORS, DRILLING, LABOR, AND ALL MISCELLANEOUS MATERIALS NECESSARY FOR THE INSTALLATION OF ONE (1) STEEL BARRIER CONNECTOR PLATE ASSEMBLY TO BE INCLUDED IN ITEM NO. 604-10.90, MISCELLANEOUS BRIDGE ITEMS. I.S. CONTRACTOR'S BID FOR THIS ITEM SHALL BE ONE (1) PLATE ASSEMBLY. THE CONTRACTOR SHALL RELOCATE THE STEEL CONNECTOR PLATE ASSEMBLY AS NEEDED DURING DIFFERENT CONSTRUCTION PHASES.

THE STEEL BARRIER CONNECTOR PLATE IS REQUIRED AT ALL FULL/PARTIAL DEPTH DECK REPAIR LOCATIONS AT BRIDGE.

UNOFFICIAL
SET

NOT FOR
BIDDING

STATE OF TENNESSEE
DEPARTMENT OF TRANSPORTATION
BUREAU OF PLANNING AND DEVELOPMENT

TRAFFIC
CONTROL PLAN

BR. NO. 79-SR205-2.51

SCALE: NONE