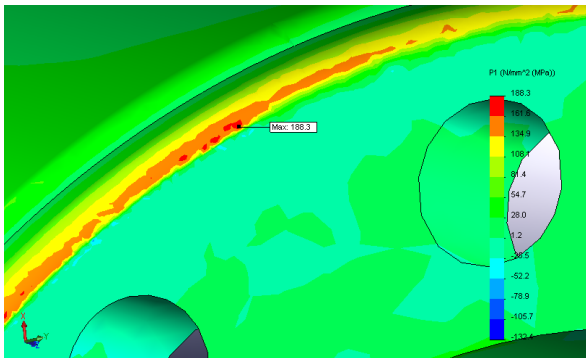
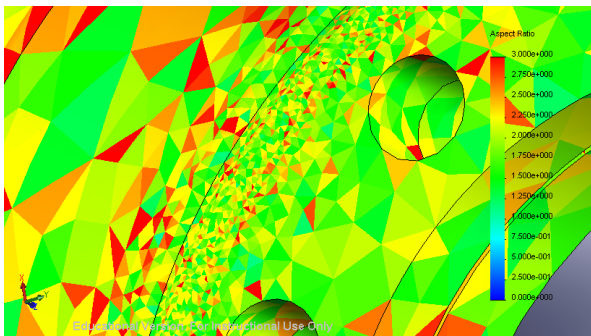
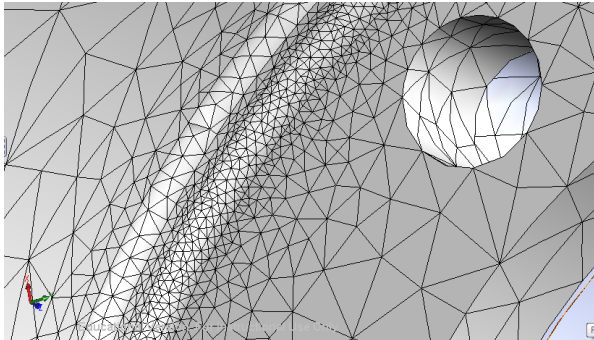
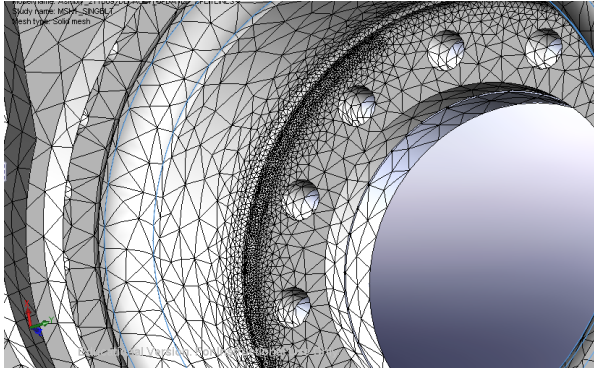
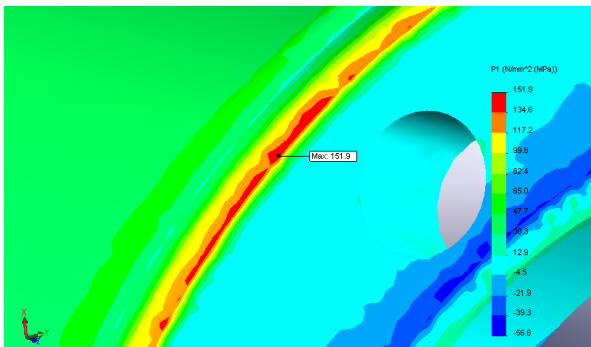
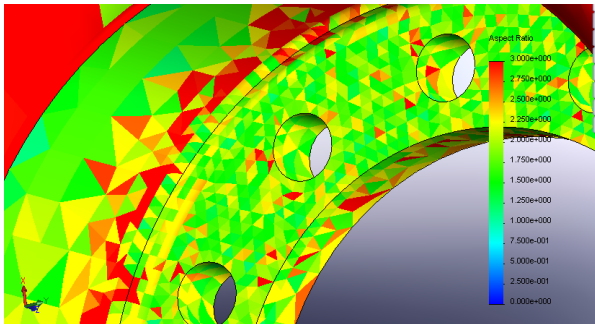
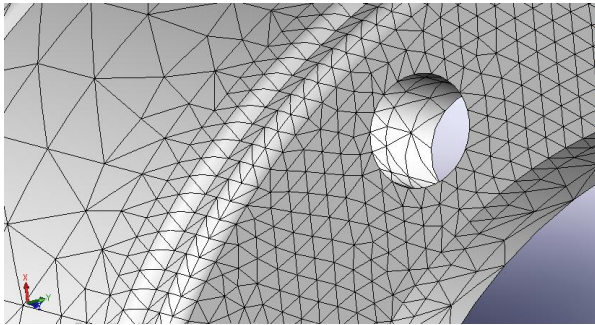
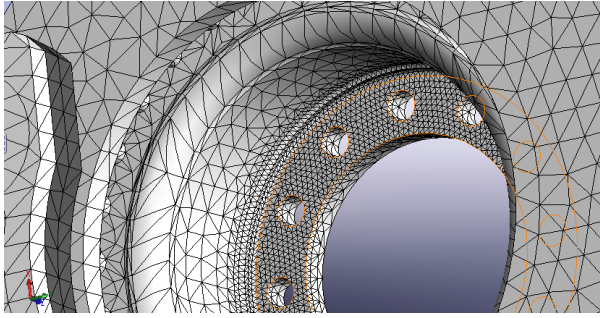


NODAL P1 STRESS - DISCRETE FRINGE FOR BOTH CASES



Fine Mesh but Aspect Ratio goes down and results become unstable, jagged

NODAL P1 STRESS - DISCRETE FRINGE FOR BOTH CASES



Large Mesh, but Aspect Ratio much better and results less jagged.

Although there is now probably some discretization error, results seems much more viable