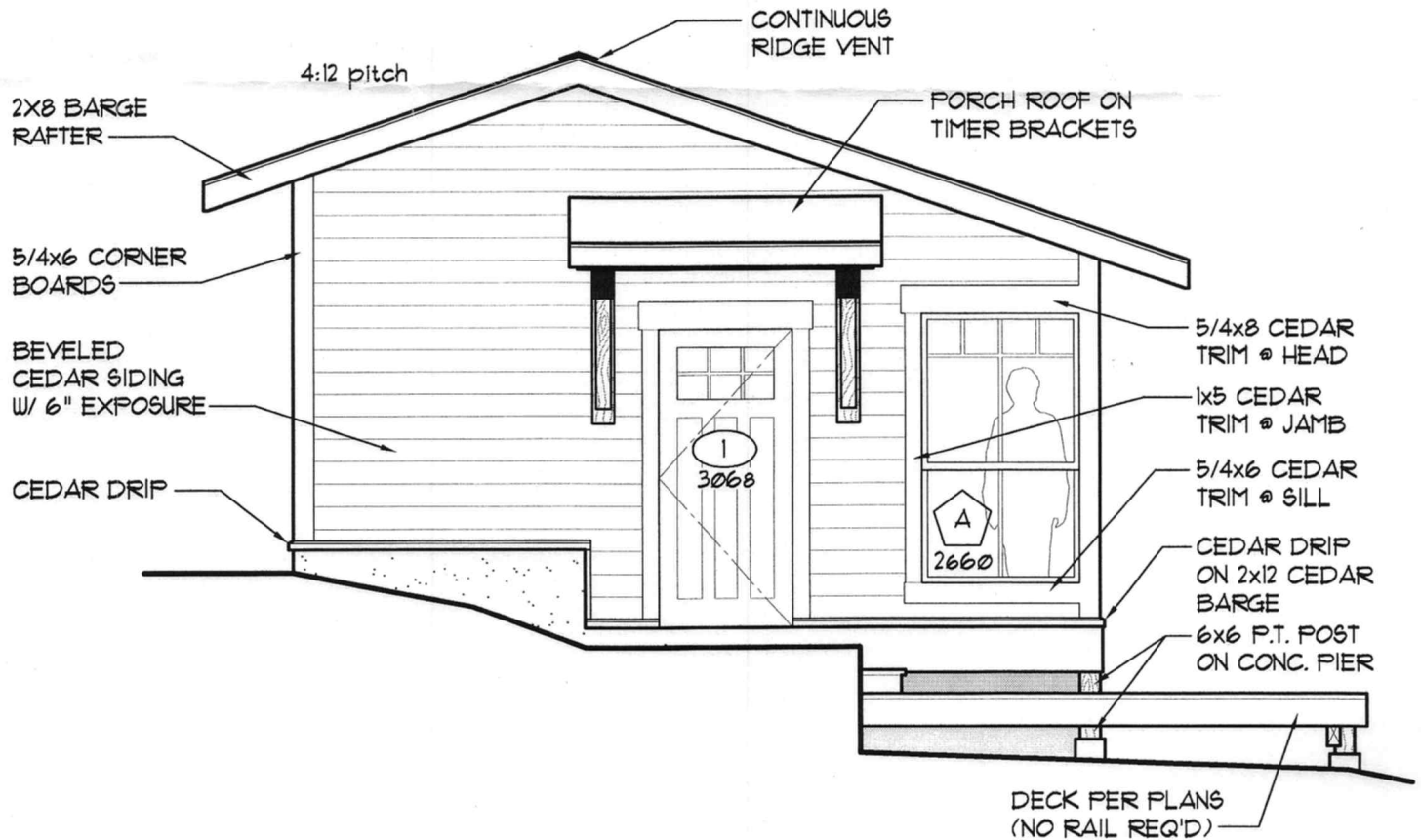


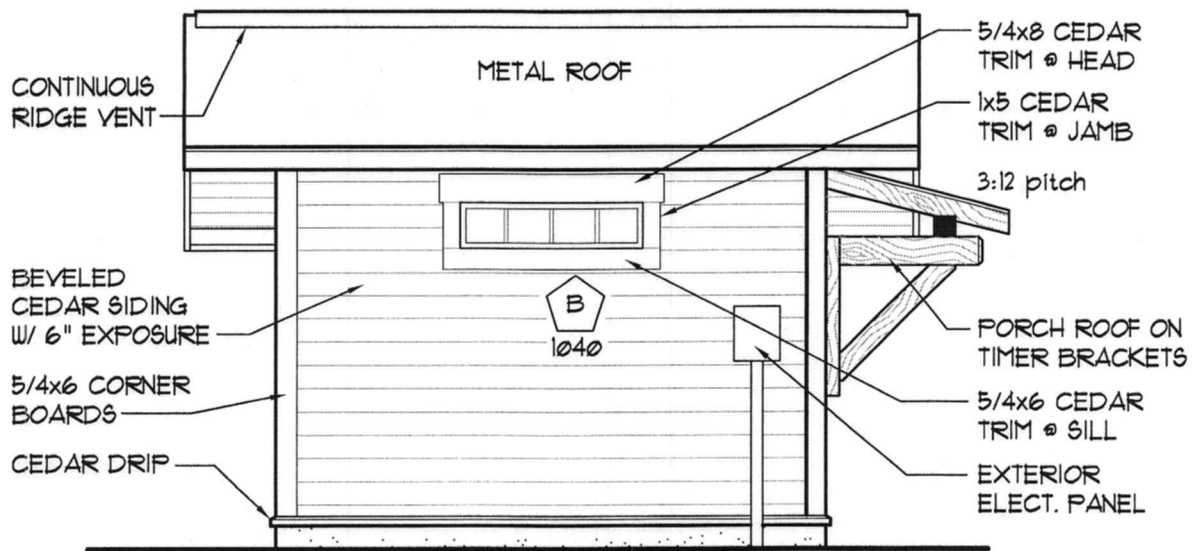
## SOUTHEAST ELEVATION

SCALE: 1/4" = 1'-0"



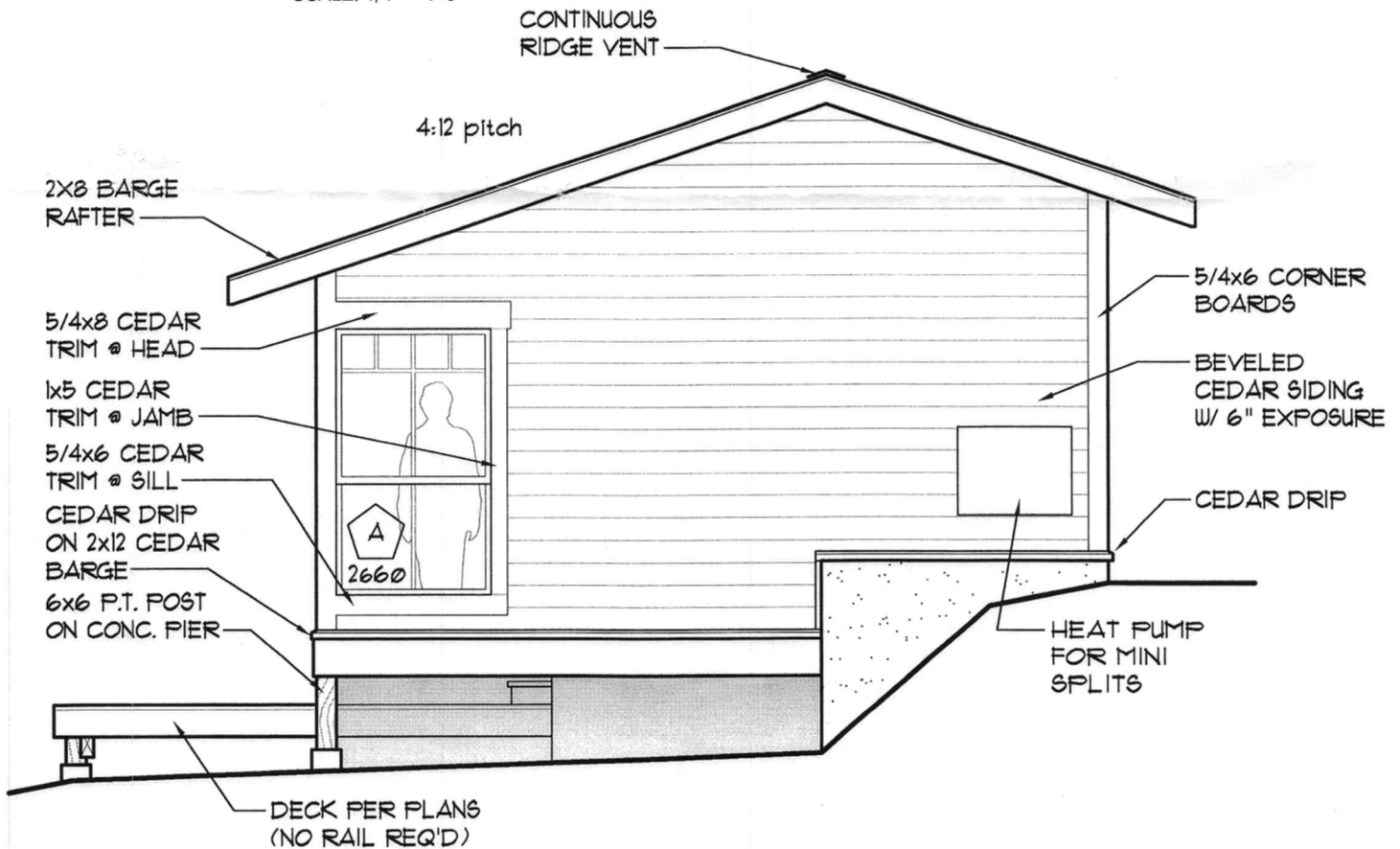
## SOUTHWEST ELEVATION

SCALE: 1/4" = 1'-0"



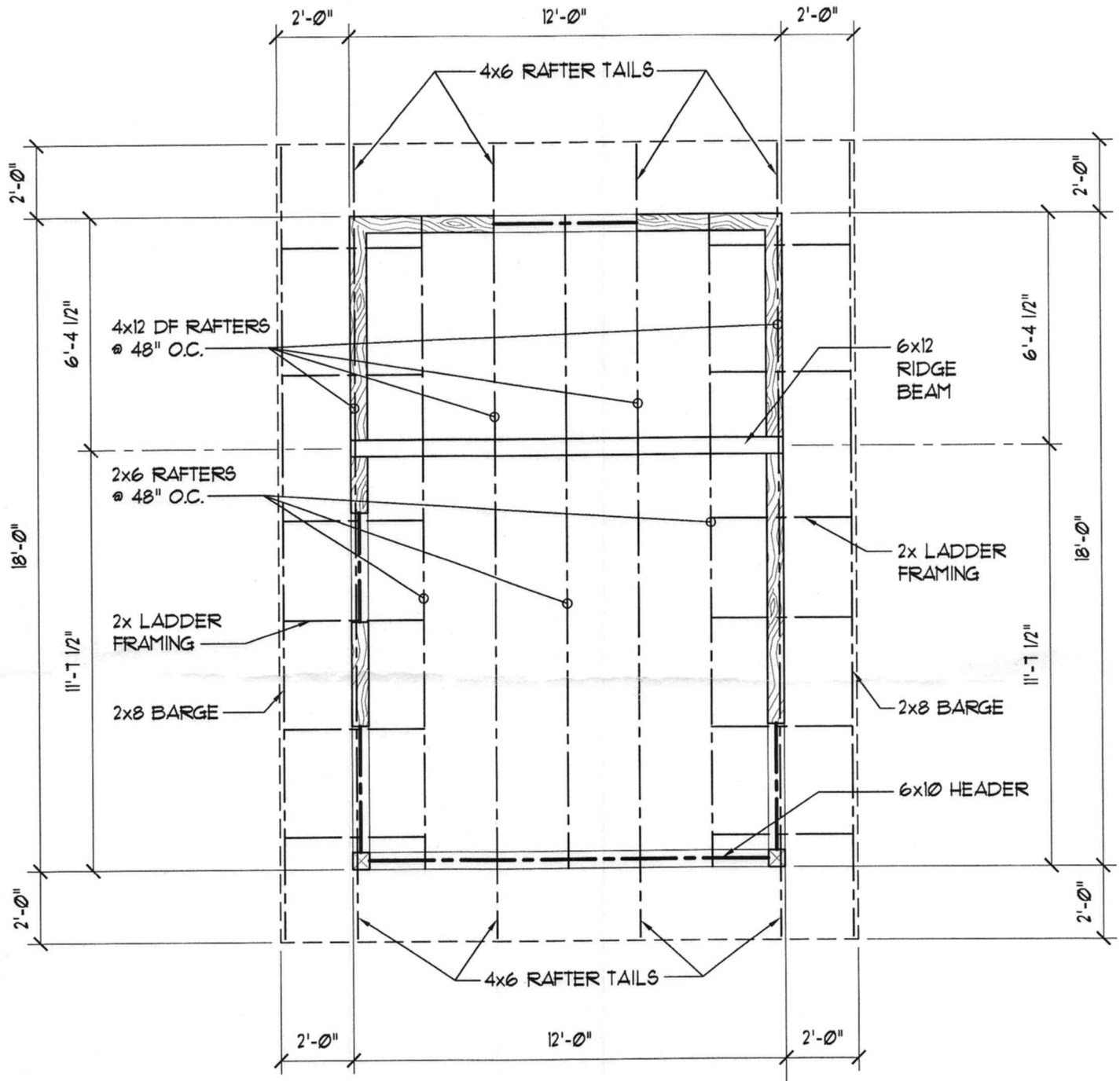
## NORTHWEST ELEVATION

SCALE: 1/4" = 1'-0"



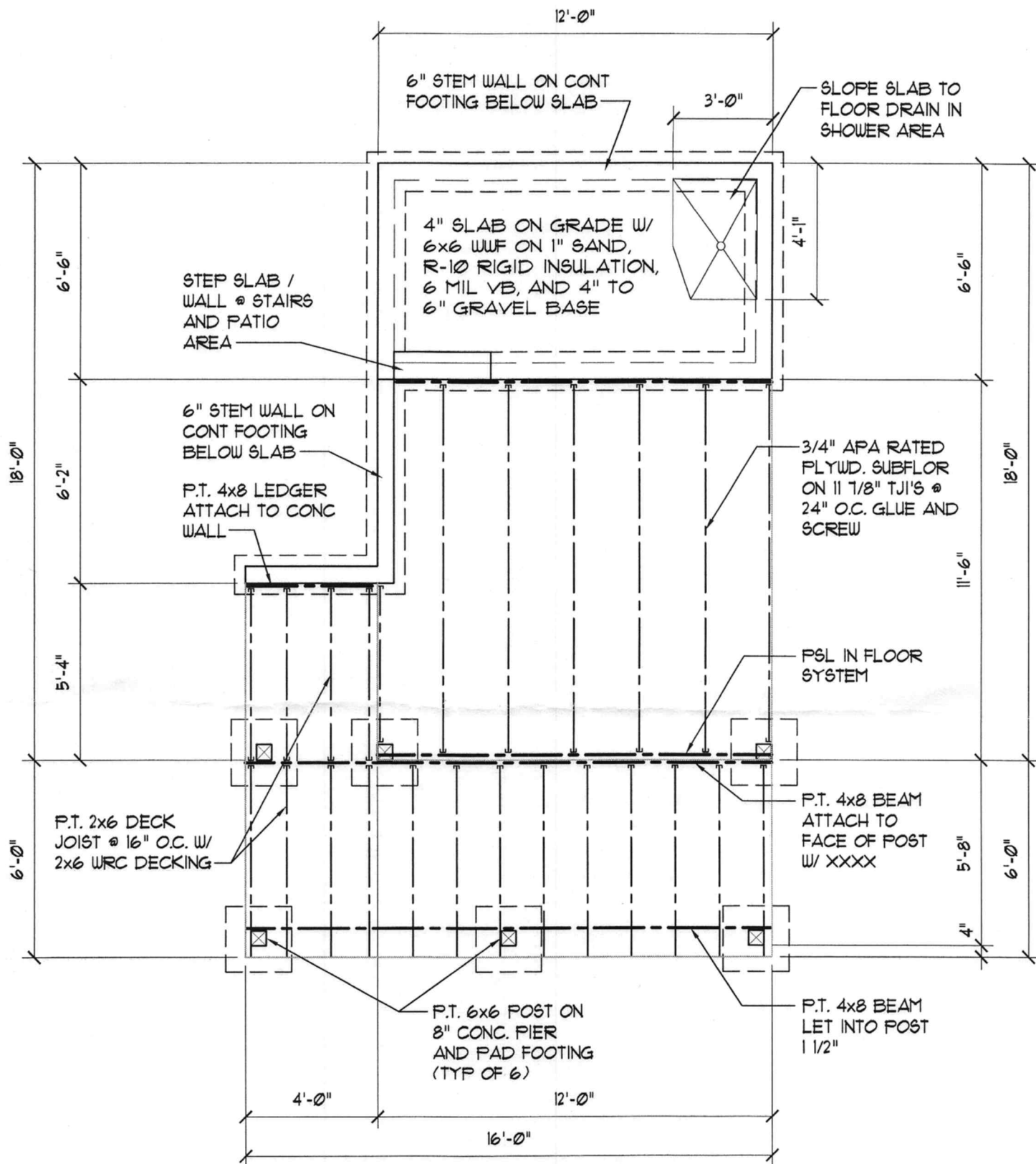
## NORTHEAST ELEVATION

SCALE: 1/4" = 1'-0"



# ROOF FRAMING PLAN

SCALE: 1/4" = 1'-0"



# FOUNDATION / FLOOR FRAMING PLAN

SCALE: 1/4" = 1'-0"

