

# LIGHT COLUMN BOLLARD

toll free 800.451.0410 • www.forms-surfaces.com

tech brief

Constructed entirely of Stainless Steel, Forms+Surfaces' Light Column Bollard provides simplicity, ruggedness and easy integration into a wide range of exterior settings. Light Columns are available in 5" and 6" diameters. Fixtures can be specified with a symmetrical lighting pattern or with a 180° perforated shield. Custom shield designs are also available.

6" diameter bollards can be specified for lighting only or with an optional internal security core designed to protect buildings and public spaces against vehicle infringement.

## COLUMN

**Series 500:** 5" (127mm) diameter tubular Stainless Steel

**Series 600:** 6" (152mm) diameter tubular Stainless Steel

## HEAD

5" (127mm) or 6" (152mm) diameter x .125" thick UV stabilized opal white polycarbonate tube with Stainless Steel cap.

## DIRECTIONAL SHIELD (optional)

Standard shield is perforated Stainless Steel with .25" (6mm) diameter holes on .38" (10mm) straight centers, 180° coverage. Custom shield designs are available (see page 4).

## BALLAST

Electronic, thermally protected, 120/277V combination for two F14T5 lamps, -18° C starting temperature, <10% THD, class A sound rating (please call for HO ballast specifications).

## LAMPS

Included. See lamp chart, ISO curves and polar plots on page 3.

## CERTIFICATION

UL and CUL listed for wet locations.

## FINISHES

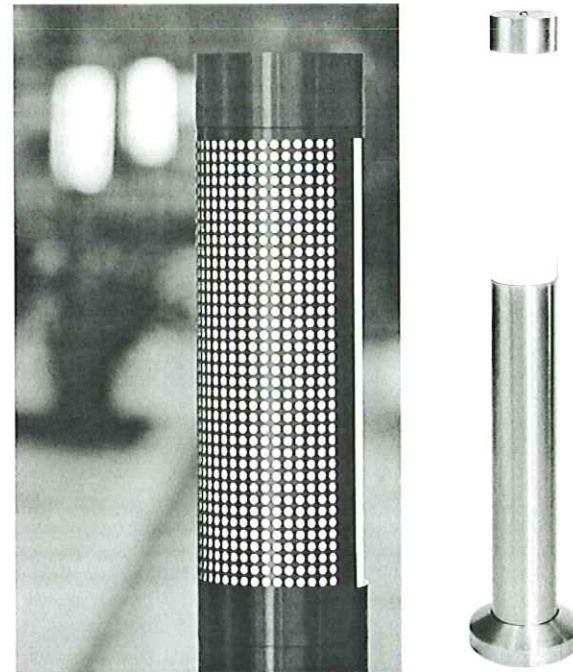
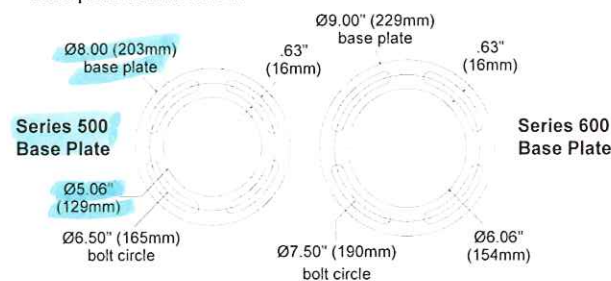
Standard finish is Satin Stainless Steel. Powdercoat colors applied over Stainless Steel may be specified for an upcharge. Please call or visit our web site for an F+S color chart or for further information on custom color options.

## FIXTURE HEIGHTS

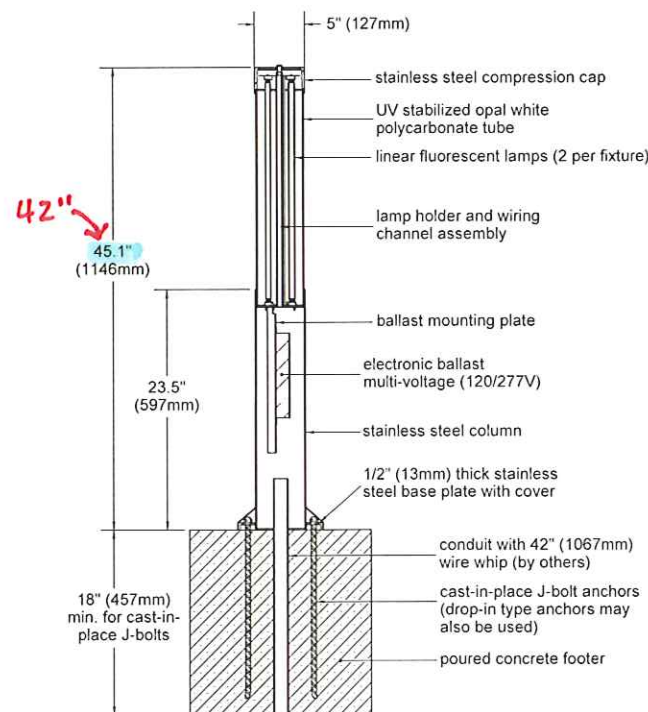
Standard height for both Series 500 and Series 600 fixtures is 45" (1143mm). Custom heights are available for an upcharge; please call for additional information.

## INSTALLATION

.50" (13mm) thick base plate, slotted for rotational capability. Stainless Steel cover, anchor bolts and template included. See base plate details below.



Series 500 Light Column Bollards shown with and without perforated shield



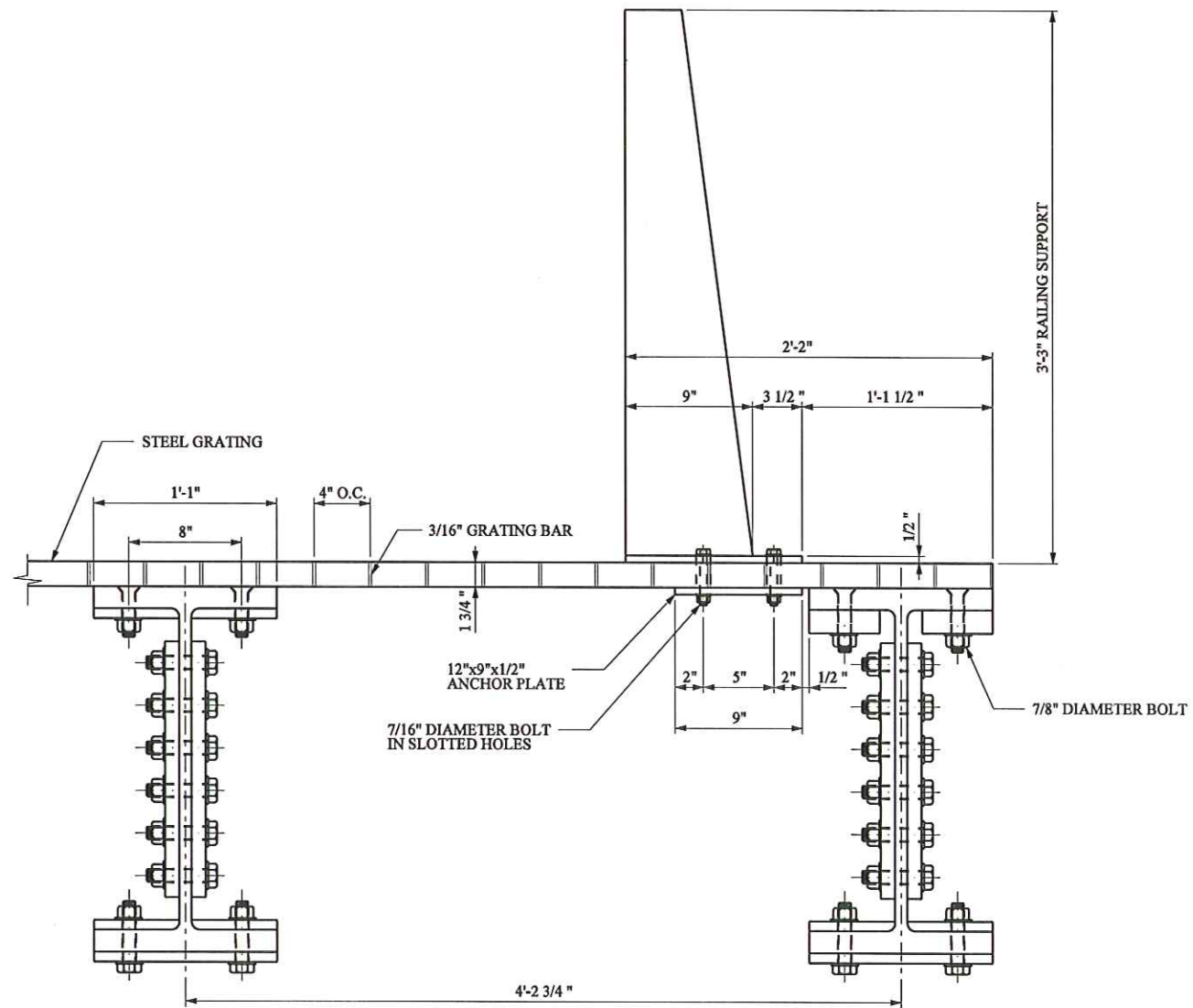
Series 500 (5" dia.) Light Column Bollard shown with standard anchor bolt mounting. Series 600 (6" dia.) Bollard and optional security core are shown on page 2. Please refer to page 2 for more detailed information on the Light Column Bollard's security core option.

tel 800.451.0410 fax 412.781.7840

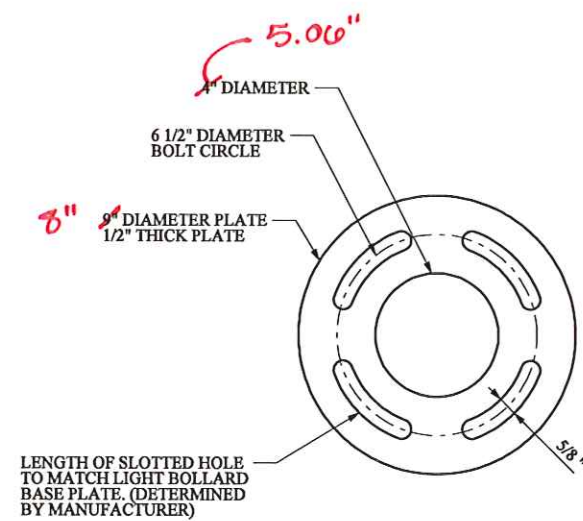
SANTA BARBARA • PITTSBURGH • SINGAPORE • DUBAI

FORMS+SURFACES

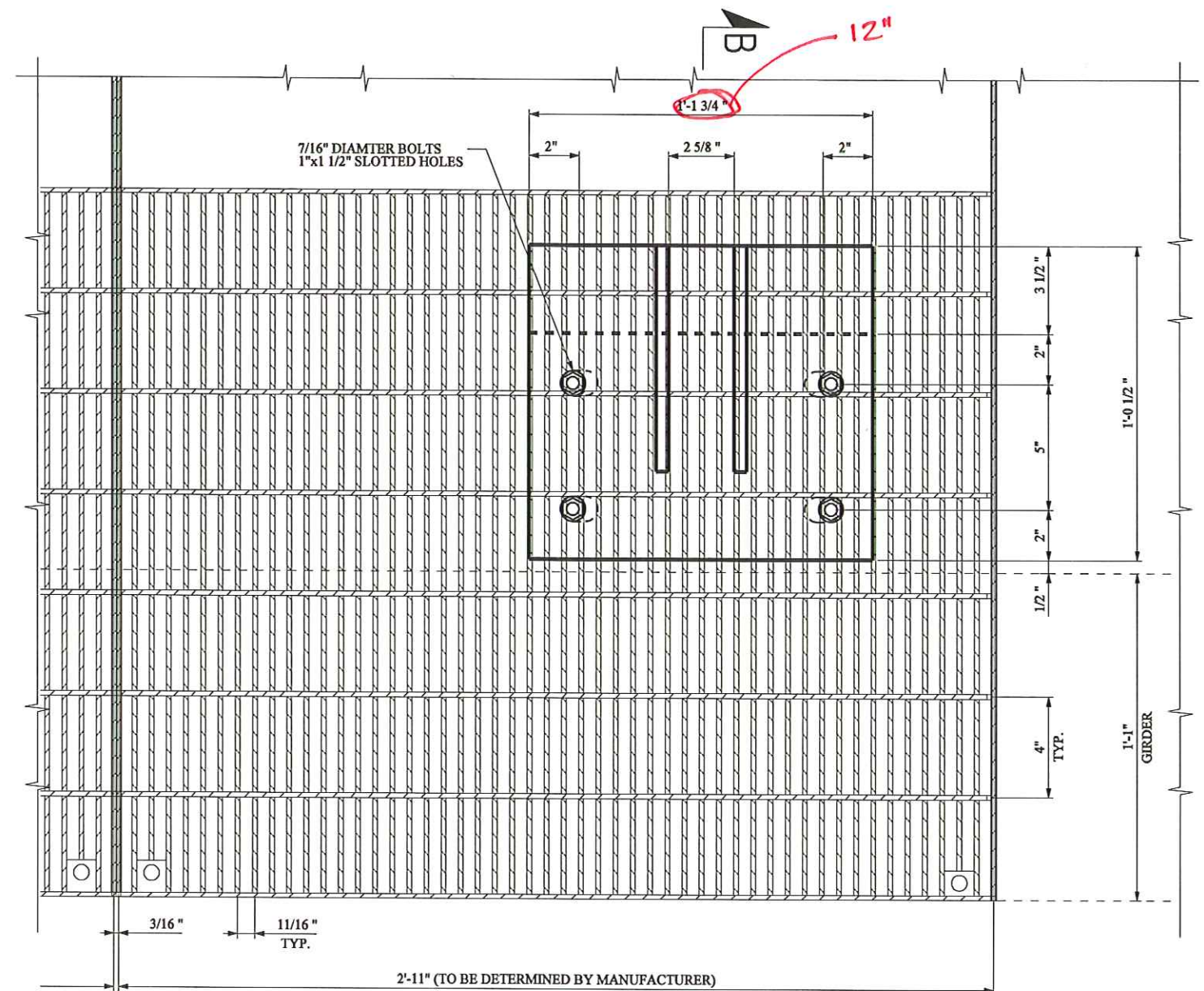
www.forms-surfaces.com



SECTION B-B  
SCALE 1" = 1'-0"



LIGHT BOLLARD - ANCHOR PLATE  
SCALE 1" = 6"



PARTIAL PLAN - 3  
SCALE 1" = 6"