

PRODUCTS AND TECHNOLOGY DEVELOPED IN CANADA OR BY CITIZENS OF CANADA ARE DEEMED TO BE OF CANADIAN ORIGIN AND THEREBY SUBJECT TO CANADIAN EXPORT CONTROL LAWS. THE EXPORT OR REEXPORT OF CANADIAN ORIGIN TECHNOLOGY BY ANY MEANS, INCLUDING DATA TRANSFER, IS PROHIBITED EXCEPT IN ACCORDANCE WITH CANADIAN LAW AND SHE LTD POLICY.

A

THIS DOCUMENT AND ITS CONTENTS ARE CONFIDENTIAL INFORMATION OF STURNI-HUESTON ENGINEERING LTD AND MAY ONLY BE PROVIDED TO OR USED BY PERSONS OUTSIDE SHE LTD PURSUANT TO THE TERMS OF A CONFIDENTIALITY AGREEMENT THAT EXPRESSLY COVERS THE TECHNOLOGY DISCLOSED BY THIS DOCUMENT. PERSONS IN POSSESSION OF THIS DOCUMENT WHO DO NOT HAVE AN APPROPRIATE CONFIDENTIALITY AGREEMENT WITH SHE LTD, ARE DIRECTED TO IMMEDIATELY RETURN THIS DOCUMENT AND ALL COPIES TO STURNI-HUESTON ENGINEERING LTD AND DESTROY ANY OR ALL PRODUCT THEREOF. © STURNI-HUESTON ENGINEERING LTD - 2010

UNLESS OTHERWISE SPECIFIED

TOLERANCES

FABRICATION

.X	=	± .25
.XX	=	± .125
.XXX	=	± .060
ANGLES	=	± 3°
MACHINE		
.X	=	± .030
.XX	=	± .015
.XXX	=	± .005
.XXXX	=	± .0010
ANGLES	=	± 1/2°

1. DO NOT SCALE DRAWING

2. DIMS. ARE IN INCHES

3. INTERPRET DIM TOL. PER ASME Y14.5M-1994

4. REMOVE ALL BURRS AND SHARP CORNERS

5. INSIDE CORNERS R0.03, OUTSIDE CORNERS R0.03 OR CHMF 0.03 X 45°

6. MACHINE FINISH 63 Ra

FIN ✓

DESIGNED:

K.H.

02 NOV 2012

DRAWN:

K.H.

04 NOV 2012

Casing SIZE:

N/A

ASS'Y No.:

2012-1102

AS PER DETAILS

THIRD ANGLE PROJECTION

STURNI-HUESTON

STURNI-HUESTON ENGINEERING LTD

EDMONTON, ALBERTA CANADA

TITLE

ASSEMBLY DRAWING

QUICK RELEASE MECHANISM

SIZE

B

DWG. NO.

2012-1102

REV

A

SCALE:

1:1

WEIGHT:

0.068 lbf

SHEET

1

OF

1

4

3

2

1

1

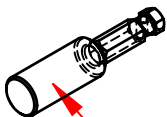
Sturni-Houston Engineering Ltd

SOLIDWORKS

NOTE: 1. STAMP PART NUMBER, MATERIAL ID CODE & MFG LOGO,
2. CASE HARDEN BY LIQUID NITRATION, 0.003/0.005 in DEPTH (REF),
3. WATER QUENCH IS NOT PERMISSABLE DURING LIQUID NITRATION PROCESS,
4. PERMISSABLE TO LEAVE OIL ON COMPONENT FOLLOWING LIQUID NITRATION,
5. LENGTH IS REFERENCE ONLY; DEBUR & BREAK SHARP EDGE.

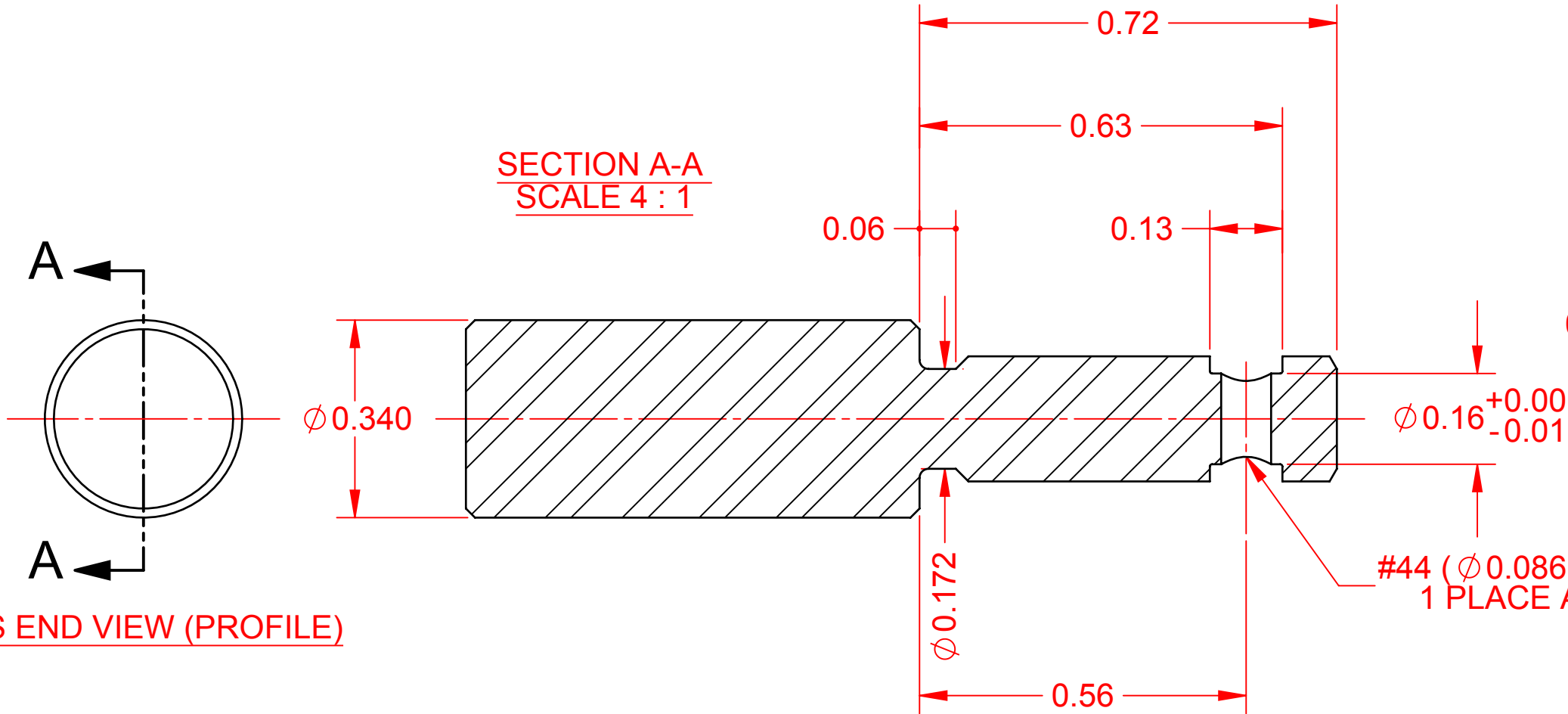
REVISIONS				
ZONE	REV.	DESCRIPTION	DATE	APPROVED
A1	A	INITIAL ISSUE	01 NOV 2012	K.J.H.

ORTHOGONAL VIEW (PROFILE)



STAMP NOTE

SECTION A-A
SCALE 4 : 1



LHS END VIEW (PROFILE)

RHS END VIEW (PROFILE)

PRODUCTS AND TECHNOLOGY DEVELOPED IN CANADA OR BY CITIZENS OF CANADA ARE DEEMED TO BE OF CANADIAN ORIGIN AND THEREBY SUBJECT TO CANADIAN EXPORT CONTROL LAWS. THE EXPORT OR REEXPORT OF CANADIAN ORIGIN TECHNOLOGY BY ANY MEANS, INCLUDING DATA TRANSFER, IS PROHIBITED EXCEPT IN ACCORDANCE WITH CANADIAN LAW AND SHE LTD POLICY.

THIS DOCUMENT AND ITS CONTENTS ARE CONFIDENTIAL INFORMATION OF STURNI-HUESTON ENGINEERING LTD AND MAY ONLY BE PROVIDED TO OR USED BY PERSONS OUTSIDE SHE LTD PURSUANT TO THE TERMS OF A CONFIDENTIALITY AGREEMENT THAT EXPRESSLY COVERS THE TECHNOLOGY DISCLOSED BY THIS DOCUMENT. PERSONS IN POSSESSION OF THIS DOCUMENT WHO DO NOT HAVE AN APPROPRIATE CONFIDENTIALITY AGREEMENT WITH SHE LTD, ARE DIRECTED TO IMMEDIATELY RETURN THIS DOCUMENT AND ALL COPIES TO STURNI-HUESTON ENGINEERING LTD AND DESTROY ANY OR ALL PRODUCT THEREOF.
© STURNI-HUESTON ENGINEERING LTD - 2010

UNLESS OTHERWISE SPECIFIED

TOLERANCES

FABRICATION

.X = ± .25
.XX = ± .125
.XXX = ± .060
ANGLES ± 3°
MACHINE
.X = ± .030
.XX = ± .015
.XXX = ± .005
.XXXX = ± .0010
ANGLES ± 1/2°

- DO NOT SCALE DRAWING
- DIMS. ARE IN INCHES
- INTERPRET DIM TOL. PER ASME Y14.5M-1994
- REMOVE ALL BURRS AND SHARP CORNERS
- INSIDE CORNERS R0.03, OUTSIDE CORNERS R0.03 OR CHMF 0.03 X 45°
- MACHINE FINISH 63 Ra

FIN ✓

DESIGNED:	K.H.	01 NOV 2012
DRAWN:	K.H.	04 NOV 2012
Casing SIZE:	N/A	
ASS'Y No.:	2012-1102	
AISI 4140/4130 HRc 28-32		
THIRD ANGLE PROJECTION		
		

STURNI-HUESTON

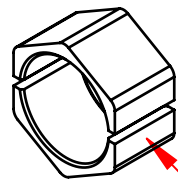
STURNI-HUESTON ENGINEERING LTD
EDMONTON, ALBERTA CANADA

TITLE

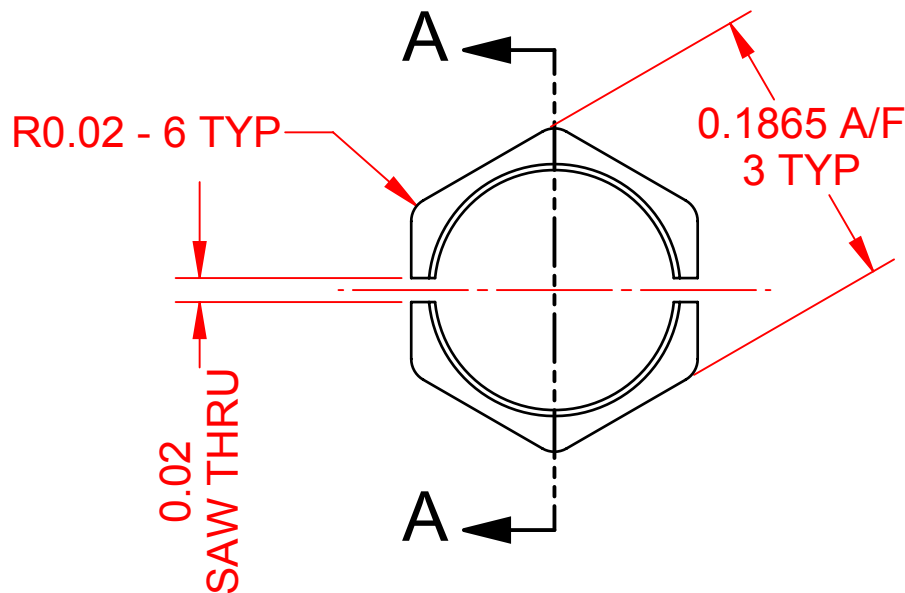
INSERT
QUICK RELEASE MECHANISM

SIZE B	DWG. NO. 2012-1101	REV A
SCALE: 2:1	WEIGHT: 0.03 lbf	SHEET 1 OF 1

ORTHOGONAL VIEW (PROFILE)



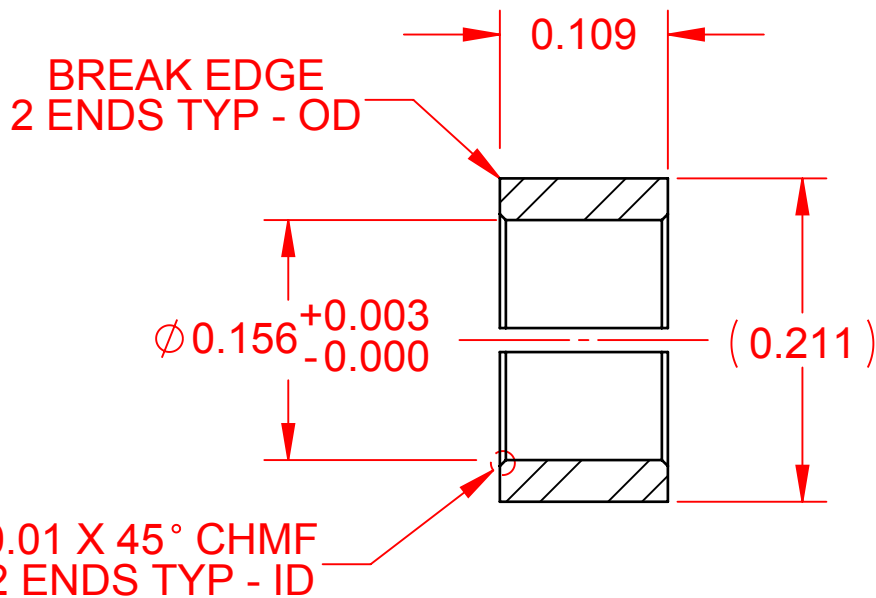
STAMP NOTE



LHS END VIEW (PROFILE)

REVISIONS				
ZONE	REV.	DESCRIPTION	DATE	APPROVED
A1	A	INITIAL ISSUE	29 OCT 2012	K.J.H.

NOTE: 1. STAMP PART NUMBER, MATERIAL ID CODE & MFG LOGO,
2. EACH SEGMENT IS A MATCH SET; DO NOT MIX SEGMENTS IF BATCHING,
3. PART NUMBER REFERS TO UPPER & LOWER SEGMENTS,
4. ZINC PHOSPHATE COATING UPON COMPLETION OF MACHINING,
5. DEBUR & BREAK SHARP EDGES.



SECTION A-A
SCALE 8 : 1

PRODUCTS AND TECHNOLOGY DEVELOPED IN CANADA OR BY CITIZENS OF CANADA ARE DEEMED TO BE OF CANADIAN ORIGIN AND THEREBY SUBJECT TO CANADIAN EXPORT CONTROL LAWS. THE EXPORT OR REEXPORT OF CANADIAN ORIGIN TECHNOLOGY BY ANY MEANS, INCLUDING DATA TRANSFER, IS PROHIBITED EXCEPT IN ACCORDANCE WITH CANADIAN LAW AND SHE LTD POLICY.

THIS DOCUMENT AND ITS CONTENTS ARE CONFIDENTIAL INFORMATION OF STURNI-HUESTON ENGINEERING LTD AND MAY ONLY BE PROVIDED TO OR USED BY PERSONS OUTSIDE SHE LTD PURSUANT TO THE TERMS OF A CONFIDENTIALITY AGREEMENT THAT EXPRESSLY COVERS THE TECHNOLOGY DISCLOSED BY THIS DOCUMENT. PERSONS IN POSSESSION OF THIS DOCUMENT WHO DO NOT HAVE AN APPROPRIATE CONFIDENTIALITY AGREEMENT WITH SHE LTD, ARE DIRECTED TO IMMEDIATELY RETURN THIS DOCUMENT AND ALL COPIES TO STURNI-HUESTON ENGINEERING LTD AND DESTROY ANY OR ALL PRODUCT THEREOF.

© STURNI-HUESTON ENGINEERING LTD - 2010

UNLESS OTHERWISE SPECIFIED

TOLERANCES

FABRICATION

.X = ± .25
.XX = ± .125
.XXX = ± .060
ANGLES ± 3°
MACHINE
.X = ± .030
.XX = ± .015
.XXX = ± .005
.XXXX = ± .0010
ANGLES ± 1/2°

- DO NOT SCALE DRAWING
- DIMS. ARE IN INCHES
- INTERPRET DIM TOL. PER ASME Y14.5M-1994
- REMOVE ALL BURRS AND SHARP CORNERS
- INSIDE CORNERS R0.03, OUTSIDE CORNERS R0.03 OR CHMF 0.03 X 45°
- MACHINE FINISH 63 Ra

FIN ✓

DESIGNED:	K.H.	29 OCT 2012
DRAWN:	K.H.	04 NOV 2012
Casing SIZE:	N/A	
ASS'Y No.:	2012-1102	
AISI 4330 V CARBON STEEL ALLOY		
THIRD ANGLE PROJECTION		
		

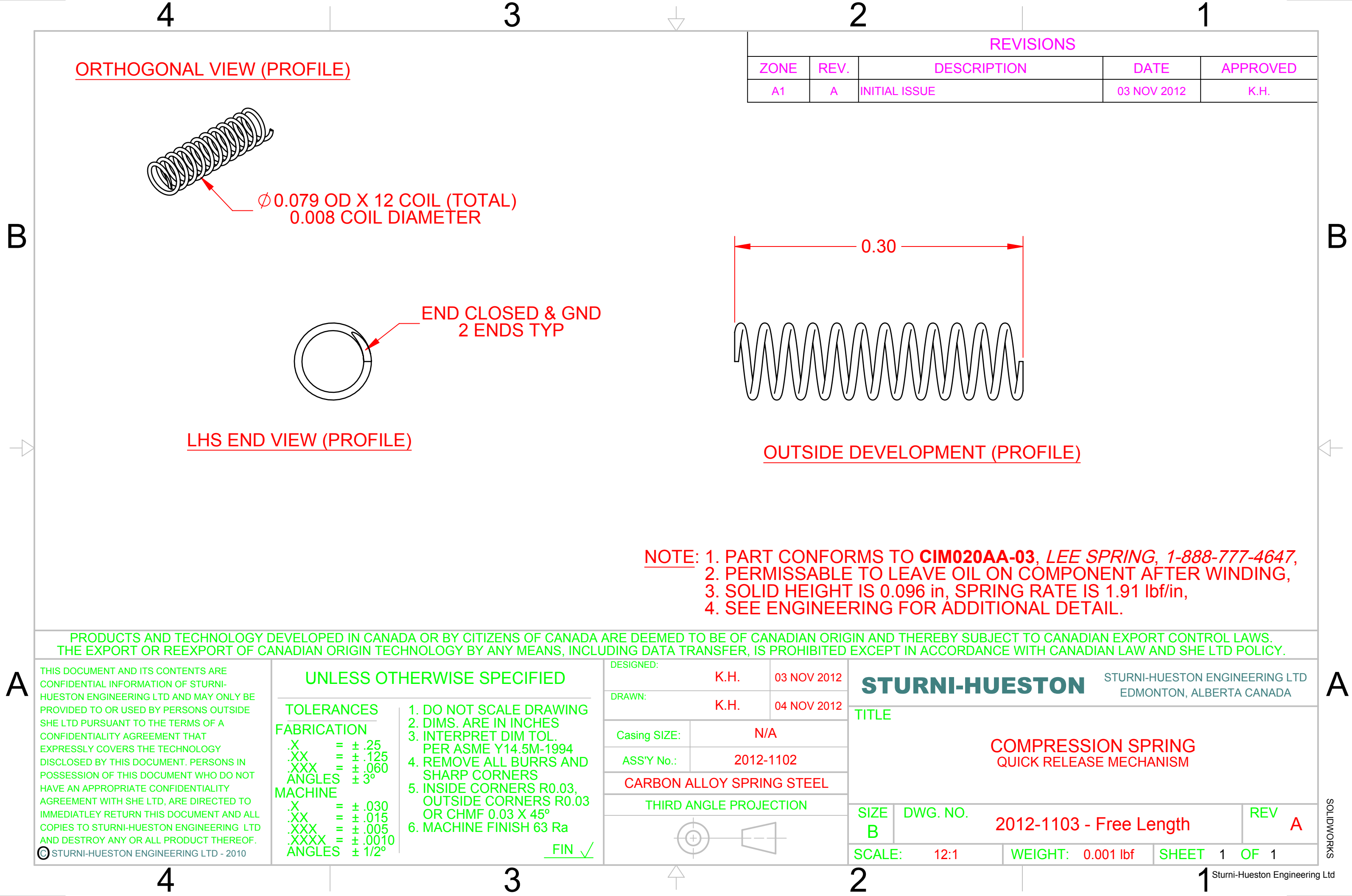
STURNI-HUESTON

STURNI-HUESTON ENGINEERING LTD
EDMONTON, ALBERTA CANADA

TITLE

LOCKING SEGMENTS
QUICK RELEASE MECHANISM

SIZE B	DWG. NO. 2012-1029	REV A
SCALE: 8:1	WEIGHT: 0.003 lbf	SHEET 1 OF 1



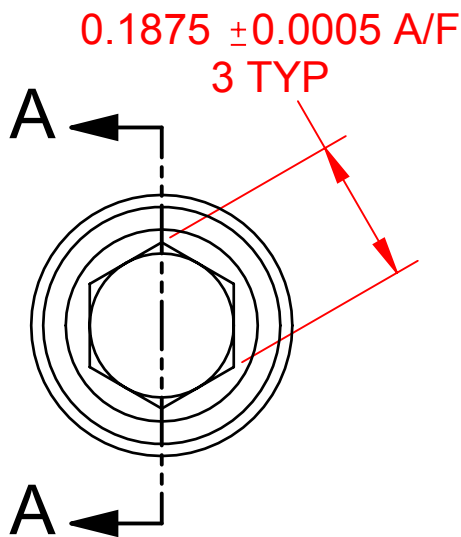
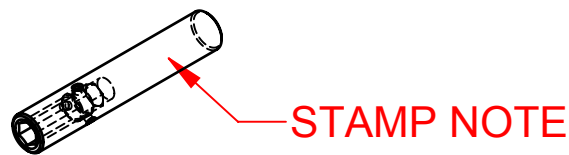
4

3

2

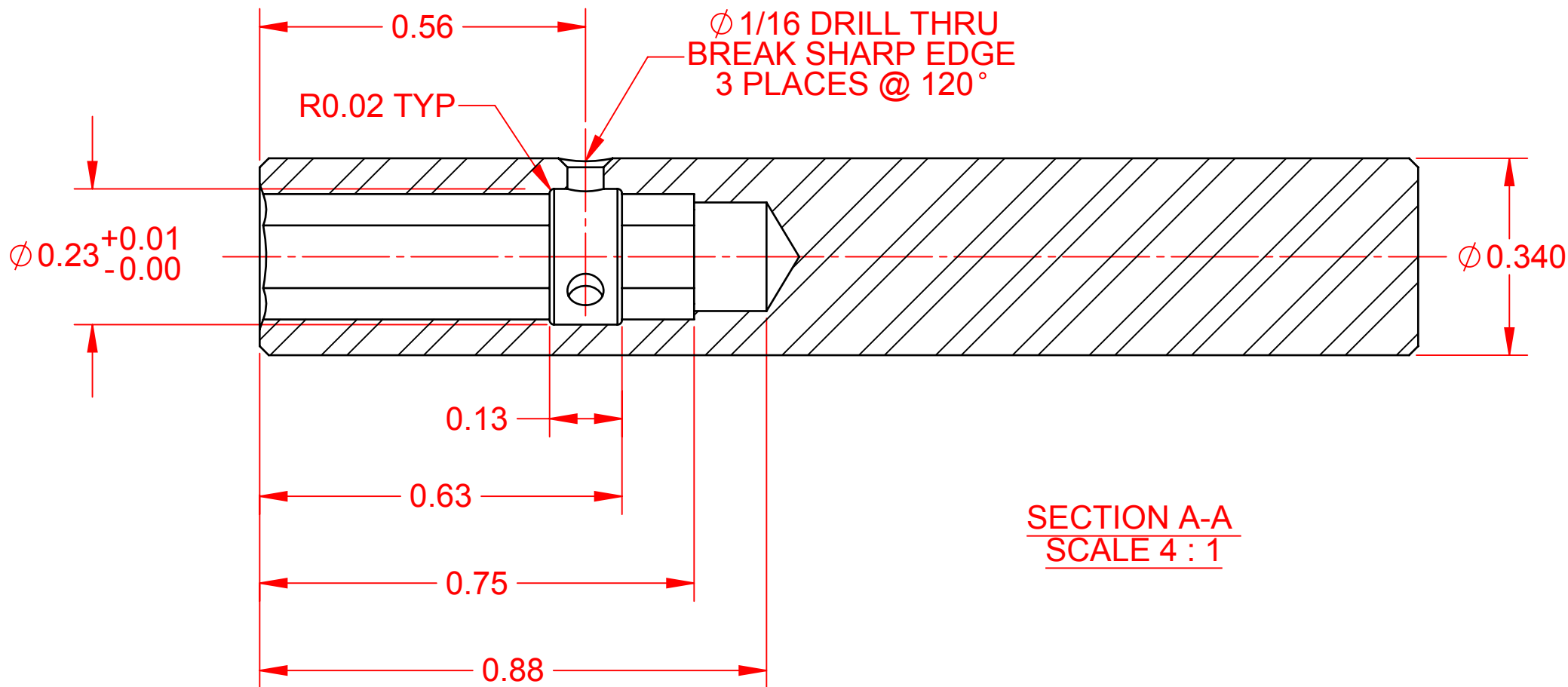
1

ORTHOGONAL VIEW (PROFILE)



LHS END VIEW (PROFILE)

REVISIONS				
ZONE	REV.	DESCRIPTION	DATE	APPROVED
A1	A	INITIAL ISSUE	31 OCT 2012	K.J.H.



SECTION A-A
SCALE 4 : 1

NOTE: 1. STAMP PART NUMBER, MATERIAL ID CODE & MFG LOGO,
2. CASE HARDEN BY LIQUID NITRATION, 0.003/0.005 in DEPTH (REF),
3. WATER QUENCH IS NOT PERMISSABLE DURING LIQUID NITRATION PROCESS,
4. PERMISSABLE TO LEAVE OIL ON COMPONENT FOLLOWING LIQUID NITRATION,
5. LENGTH IS REFERENCE ONLY; DEBUR & BREAK SHARP EDGES.

PRODUCTS AND TECHNOLOGY DEVELOPED IN CANADA OR BY CITIZENS OF CANADA ARE DEEMED TO BE OF CANADIAN ORIGIN AND THEREBY SUBJECT TO CANADIAN EXPORT CONTROL LAWS. THE EXPORT OR REEXPORT OF CANADIAN ORIGIN TECHNOLOGY BY ANY MEANS, INCLUDING DATA TRANSFER, IS PROHIBITED EXCEPT IN ACCORDANCE WITH CANADIAN LAW AND SHE LTD POLICY.

A

THIS DOCUMENT AND ITS CONTENTS ARE CONFIDENTIAL INFORMATION OF STURNI-HUESTON ENGINEERING LTD AND MAY ONLY BE PROVIDED TO OR USED BY PERSONS OUTSIDE SHE LTD PURSUANT TO THE TERMS OF A CONFIDENTIALITY AGREEMENT THAT EXPRESSLY COVERS THE TECHNOLOGY DISCLOSED BY THIS DOCUMENT. PERSONS IN POSSESSION OF THIS DOCUMENT WHO DO NOT HAVE AN APPROPRIATE CONFIDENTIALITY AGREEMENT WITH SHE LTD, ARE DIRECTED TO IMMEDIATELY RETURN THIS DOCUMENT AND ALL COPIES TO STURNI-HUESTON ENGINEERING LTD AND DESTROY ANY OR ALL PRODUCT THEREOF.
© STURNI-HUESTON ENGINEERING LTD - 2010

UNLESS OTHERWISE SPECIFIED


TOLERANCES

FABRICATION

.X = ± .25
.XX = ± .125
.XXX = ± .060
ANGLES ± 3°
MACHINE
.X = ± .030
.XX = ± .015
.XXX = ± .005
.XXXX = ± .0010
ANGLES ± 1/2°

- DO NOT SCALE DRAWING
- DIMS. ARE IN INCHES
- INTERPRET DIM TOL. PER ASME Y14.5M-1994
- REMOVE ALL BURRS AND SHARP CORNERS
- INSIDE CORNERS R0.03, OUTSIDE CORNERS R0.03 OR CHMF 0.03 X 45°
- MACHINE FINISH 63 Ra

FIN ✓

DESIGNED:	K.H.	31 OCT 2012
DRAWN:	K.H.	04 NOV 2012
Casing SIZE:	N/A	
ASS'Y No.:	2012-1102	
AISI 4140/4130 HRc 28-32		
THIRD ANGLE PROJECTION		
		

STURNI-HUESTON

STURNI-HUESTON ENGINEERING LTD
EDMONTON, ALBERTA CANADA

TITLE

SHANK
QUICK RELEASE MECHANISM

SIZE B	DWG. NO. 2012-1031	REV A
SCALE: 2:1	WEIGHT: 0.04 lbf	SHEET 1 OF 1

4

3

2

1