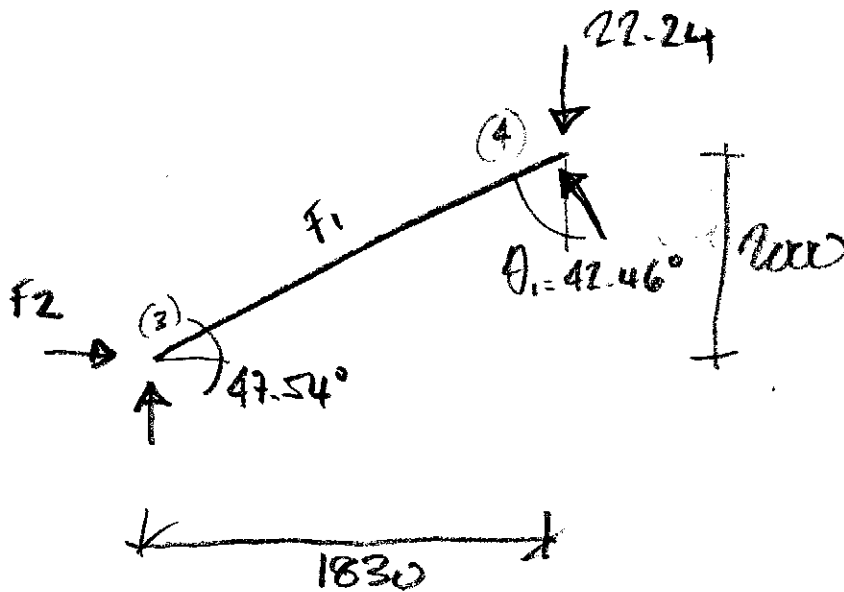
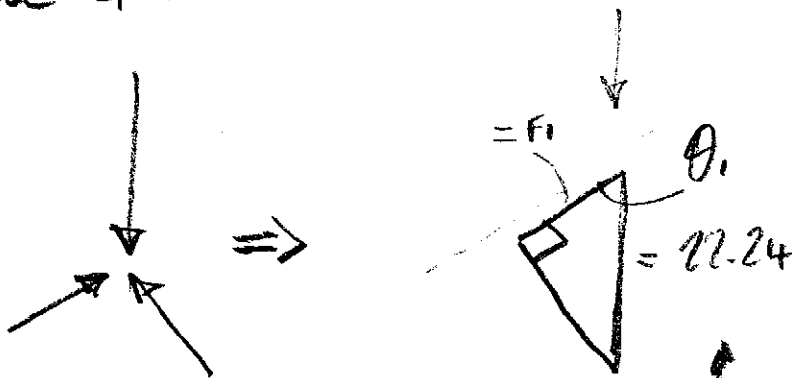


SOFTWARE :  $F_1 = 16.21 \text{ kN}$   $F_2 = 10.94 \text{ kN}$   
 $R_{1y} = 10.28 \text{ kN}$   $R_2 = 11.96 \text{ kN}$   
 $\sum = 22.24 \text{ kN} \checkmark$



Node 4 :



$$F_1 = 22.24 \times \cos 42.46^\circ = 16.41 \text{ kN} \text{ (X)}$$

Problem is equilibrium if  $\sum = 22.24$  as there is also vt at Node 3.