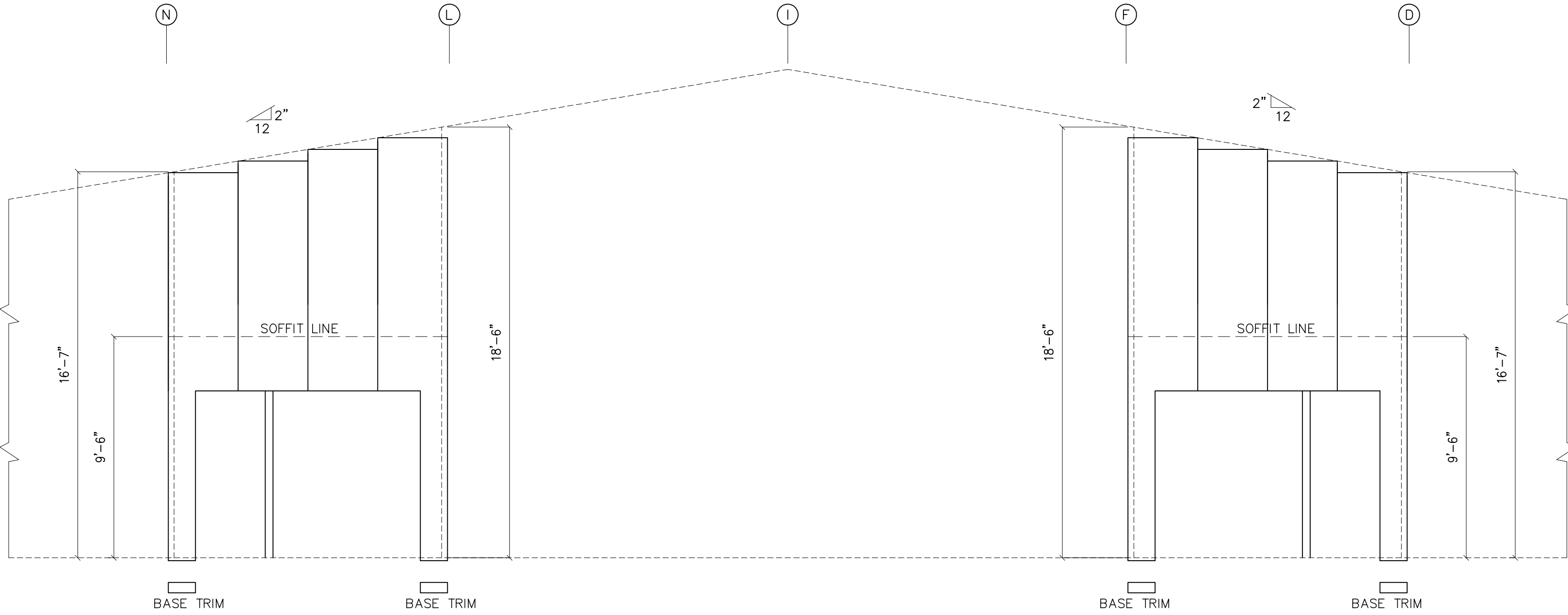
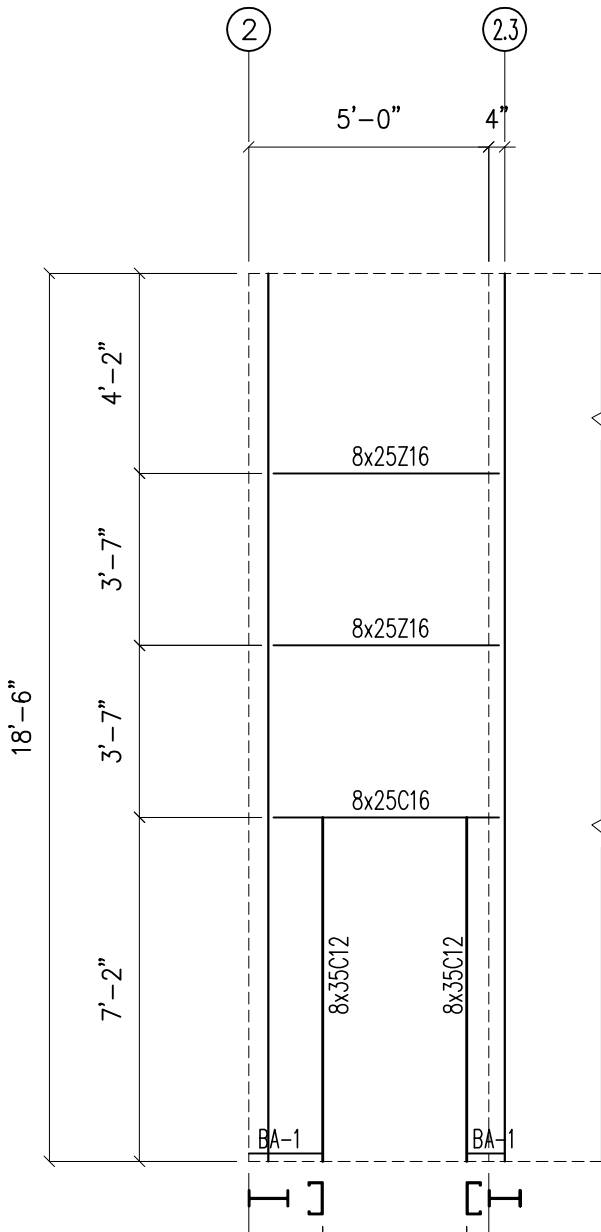


ENDWALL FRAMING: FRAME LINE 2.3

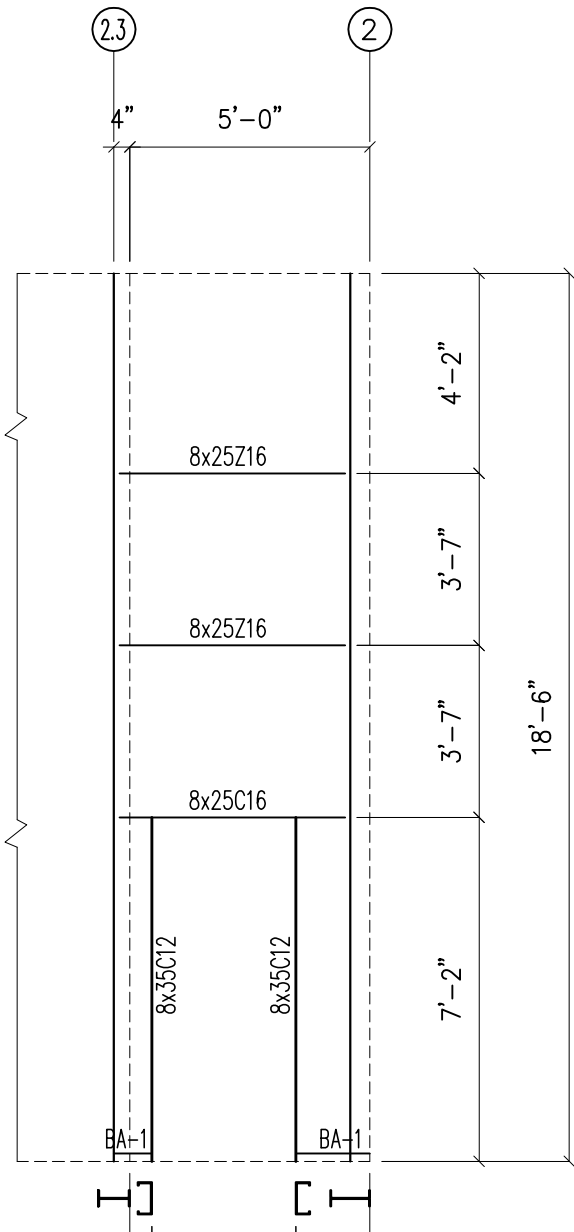


ENDWALL SHEETING & TRIM: FRAME LINE 2.3

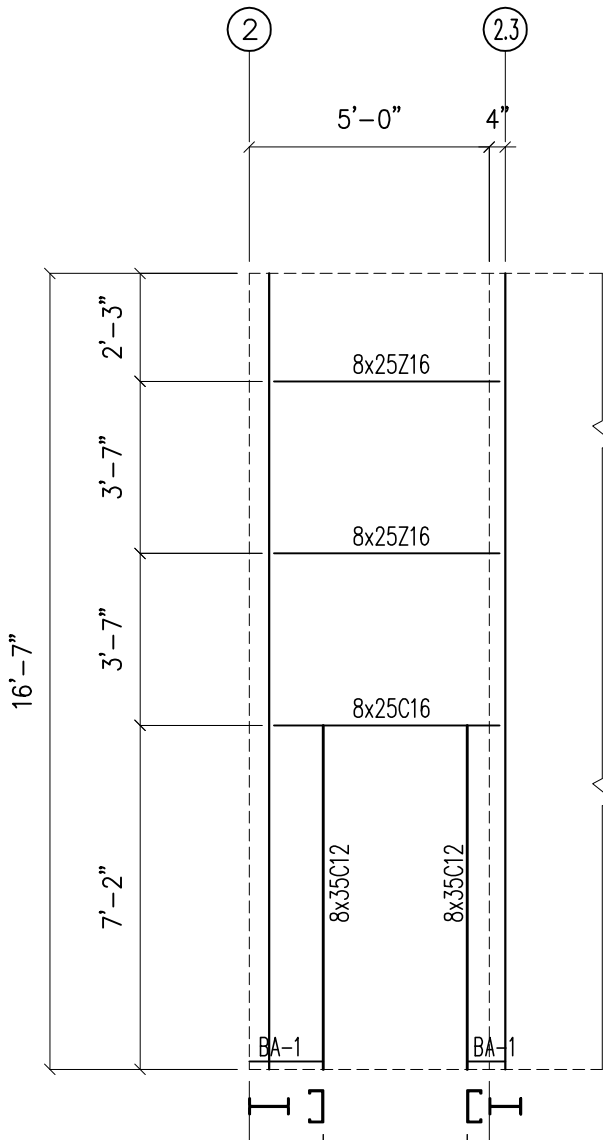
24 Ga. REV. PBM – GLVM PLUS



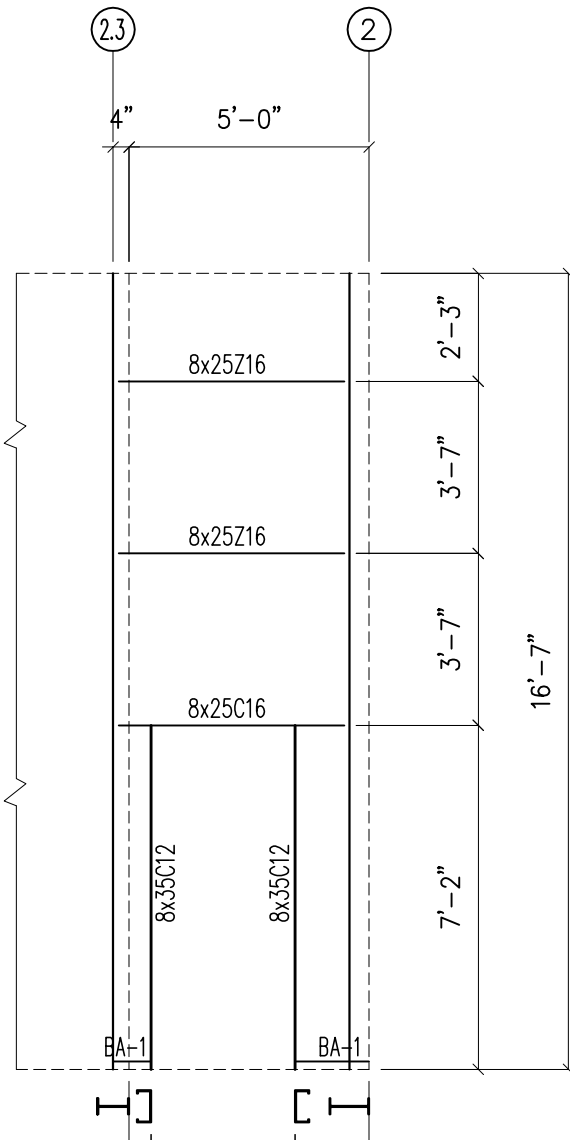
ENDWALL FRAMING:
FRAME LINE F



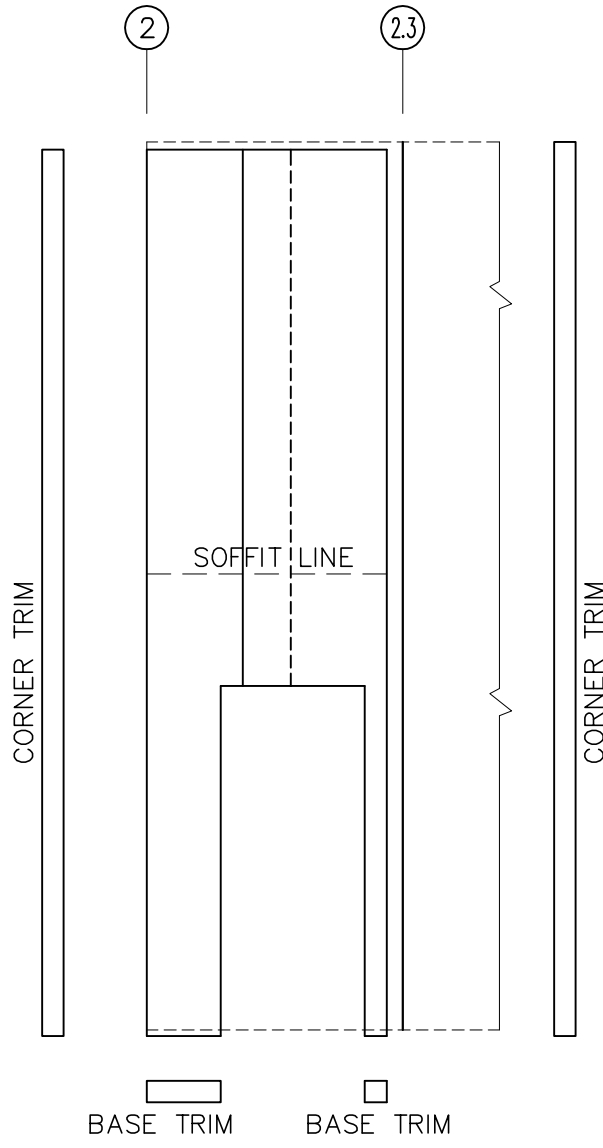
ENDWALL FRAMING:
FRAME LINE L



ENDWALL FRAMING:
FRAME LINE N

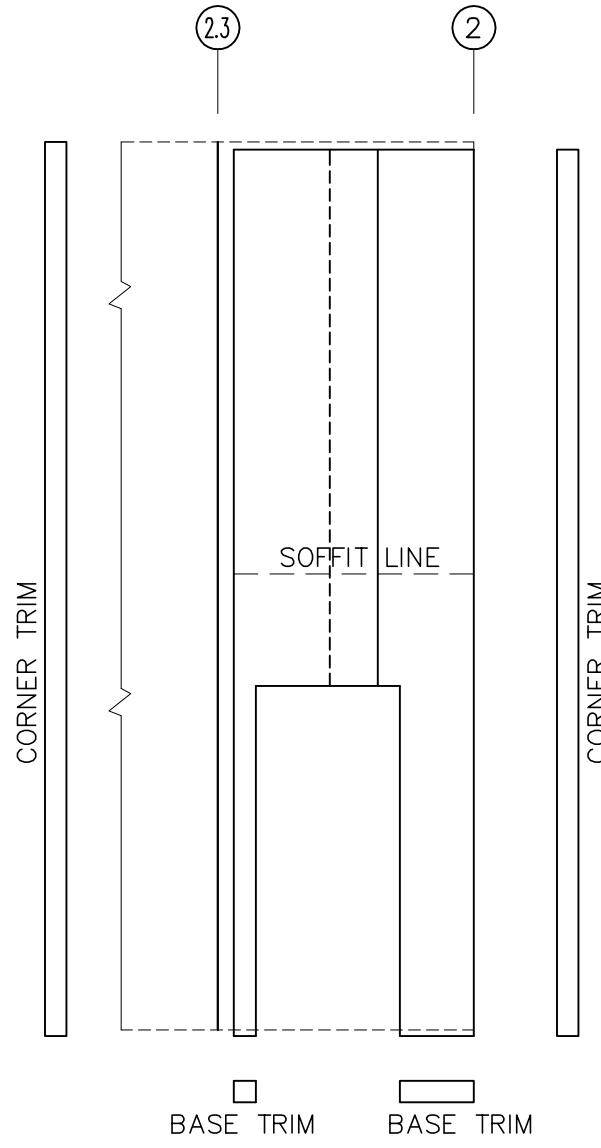


ENDWALL FRAMING:
FRAME LINE D



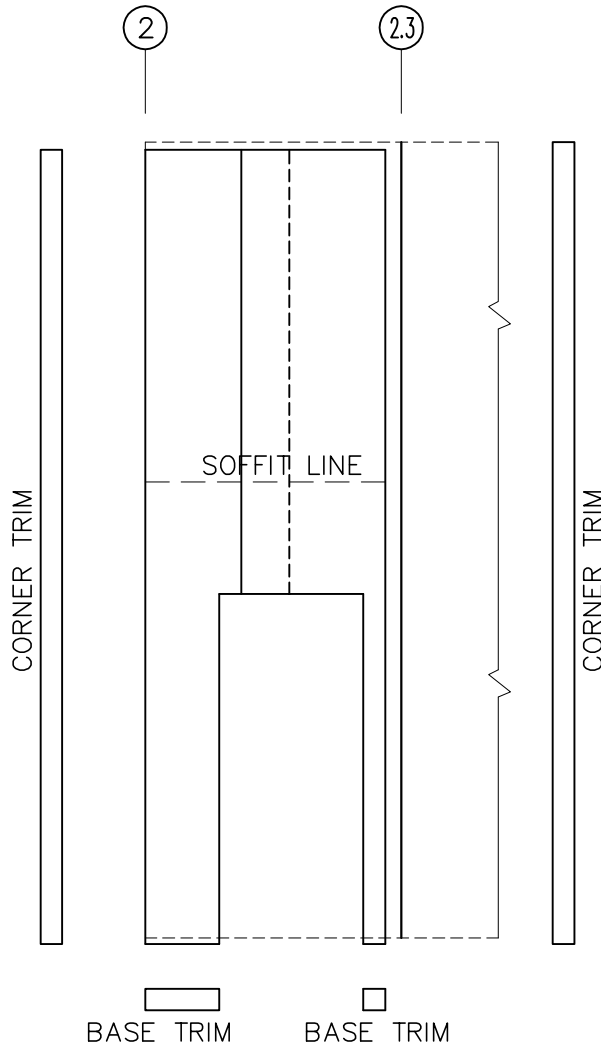
ENDWALL SHEETING & TRIM:
FRAME LINE F

24 Ga. REV. PBM – GLVM PLUS



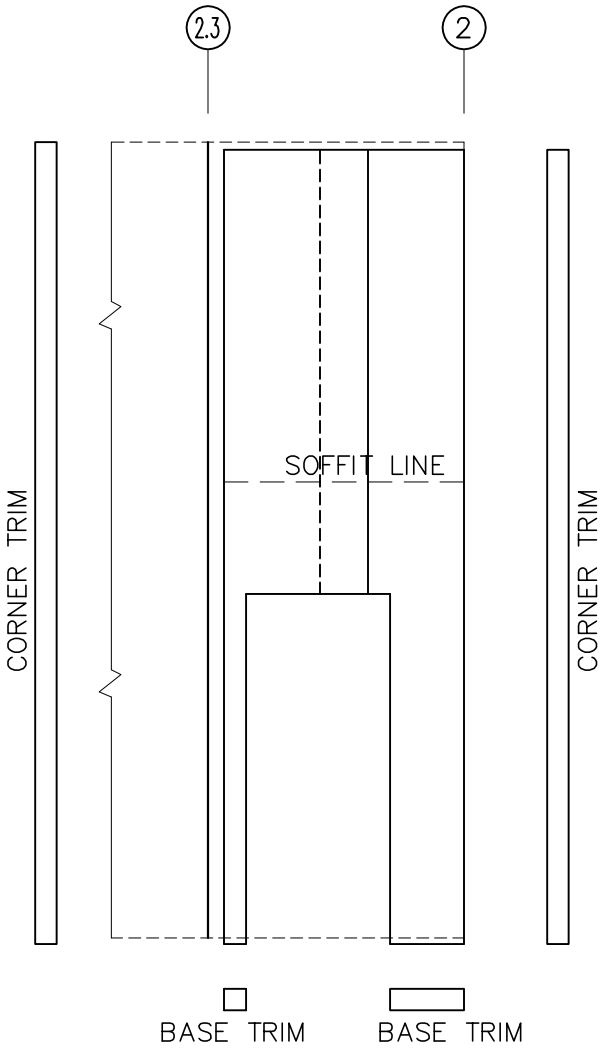
ENDWALL SHEETING & TRIM:
FRAME LINE L

24 Ga. REV. PBM – GLVM PLUS



ENDWALL SHEETING & TRIM:
FRAME LINE N

24 Ga. REV. PBM – GLVM PLUS



ENDWALL SHEETING & TRIM:
FRAME LINE D

24 Ga. REV. PBM – GLVM PLUS

ISSUE	REV. DESCRIPTION	DATE	DRN. DES.
A	CONFIRMATION/PERMIT	03.29.10	FFF
B	CONFIRMATION/PERMIT	06.11.10	RDA
			JDB



SEALING OF THIS DRAWING DOES NOT IMPLY OR CONSTITUTE THAT RIGID BUILDINGS ENGINEER IS THE ENGINEER OF RECORD OR THE DESIGN PROFESSIONAL FOR THIS PROJECT. ONLY THE DESIGN OF THE METAL BUILDING SYSTEM AS FURNISHED BY RIGID IS INCLUDED. FOUNDATION ANALYSIS, ELECTRICAL, AND MECHANICAL SYSTEMS, AND/OR OTHER PARTS SUPPLIED BY ANYONE OTHER THAN RIGID ARE SPECIFICALLY EXCLUDED. NO INSPECTION OR SUPERVISION IS IMPLIED.			
DESCRIPTION	ENDWALL/SIDEWALL FRAMING & SHEETING ELEVATION		
CUSTOMER	DOLPHIN WORLD, INC.		
END USER	DOLPHIN WORLD, INC.		
END USE	RETAIL MAIN BLDG.		
LOCATION	2902 SEAWALL BLVD. GALVESTON, TX 77550		
DRN. BY: FFF	DATE: 3/29/10	CHK. BY: .	DATE: .
JOB NO.: 29641	SCALE: 1/4"	DWG. NO.: E10 OF 20	ISSUE: B