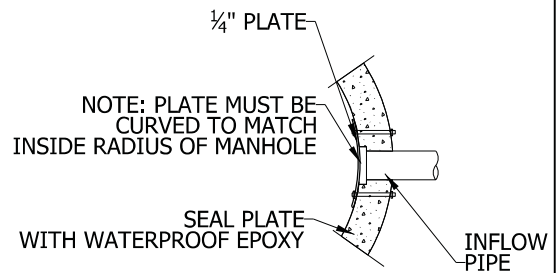
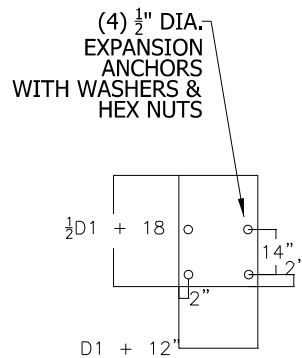


NOTES:

1. REQUIRED FOR 2FT. OR GREATER DROP TO SANITARY OR COMBINED SEWER.
2. MINIMUM WALL THICKNESS IS 6" FOR CAST IN PLACE CONCRETE STRUCTURES AND 1/12 MANHOLE DIAMETER FOR PRECAST CONCRETE STRUCTURES.
3. CONCRETE FOR ENCASEMENT SHALL BE 4,000 PSI @ 28 DAYS.
4. FORCEMAIN FLOW NOT ALLOWED AS INCOMING SEWER, SEE FORCEMAIN DISCHARGE DETAIL.

DIAMETER (INCHES)	
D1	D2
6	8
8	8
10	8
12	8
15	10
18	12
21	15
24	18



STEEL PLATE DAM

NOTES:

1. PLATE AND FASTENERS MUST BE FABRICATED IN STAINLESS STEEL, DUCTILE IRON, OR EQUIVALENT WATERPROOF/WEATHER PROOF MATERIALS.
2. BOLTS TACK WELDED TO PLATE.
3. ANCHOR EMBEDMENT: 3" MIN.

NOT TO SCALE

