

DOCUMENT TITLE

EQUIPMENT VIBRATION ANALYSIS
51-581-PA-002B
NC41 H2 AREA

COMMENT

During vibration survey on 03.01.2015. The vibration measurements on the Rich MDEA Pump 51-581-PA-002B were carried out at site. High vibration on the pump due to flow turbulence. The flow turbulence induces vortices and the clearance space between the impeller vane tips and the diffuser in pump. Dynamic pressure fluctuations produced vibrations in shaft because the pressure pulses impinge on the impeller which will affect the bearings condition by time. Flow past a restriction in pipe can produce turbulence or flow-induced vibrations. The pulsation could produce noise and vibration over a wide frequency range as shown in the spectrum below.

The frequencies are related to the flow velocity and geometry of the obstruction. These in turn excite resonant frequencies in other pipe components.

Vibration amplitudes for the Pump were found to be not well within the severity. The highest overall vibration recorded on pump was. **5.7 mm/s**, as shown in trend (See Fig 1), with overall velocity below.

And overall spike energy (**2.5 G** See Fig2), also the spectrum (See Fig3), This was from the drive end Pump horizontal position. The vibration on the Pump during the analysis was at just acceptable level and A **CBM Team is still monitoring.**

VISA


Written by	Approved by	State	Date
Khaled Durar (1011) Aimen ALngar (12303)	Abuajela El-Daghell (437) CBM SPV		04/01/2015 06:49:21

Table of contents

[Expertise Report03](#)
[Analysis Report04](#)
[Data History Report.....09](#)
[Equipments List Report13](#)

Expertise Report

Filter: Equipment name (+) \ Tree order (+)

Location	MELLITAH OIL & GAS\NC 41\TRAIN 1 - (+)\UNIT 581 - H2\			Stationary speed																																				
Designation	TRAIN 1 - MDEA ADSORPTION & REGENERATION																																							
Equipment	51-581-PA-002B																																							
Designation	Rich MDEA pump																																							
Abbreviation	PA-002B																																							
Serial No																																								
Model																																								
Periodicity (d)	Normal 60	Alarm 15																																						
Power: 530 KW RPM: 1485 Q: 1327 m3/h H: 73 m																																								
EM DE Brg.: NU224MC3+6224C3																																								
<table><tr><th colspan="2">Previous Advice</th><th>Condition</th><th colspan="2">Rotation Speed</th></tr><tr><td>27/11/2014 11:27:22</td><td>FAIR</td><td>DfCnd</td><td>24.7 Hz</td><td>1482 rpm</td></tr><tr><td>03/11/2014 15:47:48</td><td>GOOD</td><td>DfCnd</td><td>24.7 Hz</td><td>1482 rpm</td></tr><tr><td>14/01/2014 17:28:44</td><td>FAIR</td><td>DfCnd</td><td>24.7 Hz</td><td>1482 rpm</td></tr><tr><td>27/12/2013 15:45:16</td><td>CRITICAL</td><td>DfCnd</td><td>24.7 Hz</td><td>1482 rpm</td></tr><tr><td>20/12/2013 11:37:25</td><td>CRITICAL</td><td>DfCnd</td><td>24.7 Hz</td><td>1482 rpm</td></tr><tr><td>27/03/2013 10:27:00</td><td>GOOD</td><td>DfCnd</td><td>24.7 Hz</td><td>1482 rpm</td></tr></table>						Previous Advice		Condition	Rotation Speed		27/11/2014 11:27:22	FAIR	DfCnd	24.7 Hz	1482 rpm	03/11/2014 15:47:48	GOOD	DfCnd	24.7 Hz	1482 rpm	14/01/2014 17:28:44	FAIR	DfCnd	24.7 Hz	1482 rpm	27/12/2013 15:45:16	CRITICAL	DfCnd	24.7 Hz	1482 rpm	20/12/2013 11:37:25	CRITICAL	DfCnd	24.7 Hz	1482 rpm	27/03/2013 10:27:00	GOOD	DfCnd	24.7 Hz	1482 rpm
Previous Advice		Condition	Rotation Speed																																					
27/11/2014 11:27:22	FAIR	DfCnd	24.7 Hz	1482 rpm																																				
03/11/2014 15:47:48	GOOD	DfCnd	24.7 Hz	1482 rpm																																				
14/01/2014 17:28:44	FAIR	DfCnd	24.7 Hz	1482 rpm																																				
27/12/2013 15:45:16	CRITICAL	DfCnd	24.7 Hz	1482 rpm																																				
20/12/2013 11:37:25	CRITICAL	DfCnd	24.7 Hz	1482 rpm																																				
27/03/2013 10:27:00	GOOD	DfCnd	24.7 Hz	1482 rpm																																				
Date		FAIR	Speed 24.7 Hz / 1482 rpm																																					
03/01/2015 16:49:15		Health is not acceptable for a long time service.		Author MOG																																				
Condition				System - Serial Movipack - 13107EEX																																				
DfCnd				Sensor Model ASH201-EX; SN:7192																																				
				Connector CAT7338 CE																																				
Diagnosis & Recommendation				Parameters sheet																																				
Diagnosis																																								
Runs with turbulence flow																																								
High vibration on the pump due to flow turbulence																																								
Poor lubrication on the EM brg																																								
Recommendations																																								
Grease the EM brgs																																								
Adjust the process parameters																																								



Analysis Report

Filter: Equipment name (+) \ Tree order (+) Alarm type: Danger \ Alarm \ Ok

MELLITAH OIL & GAS INC 41\TRAIN 1 - (+)\UNIT 581 - H2\

51-581-PA-002B	<i>Selected Date</i>	03/01/2015 16:49:15	<i>Speed</i>	24.7 Hz / 1482 rpm
	<i>Author</i>	MOG	<i>Connector</i>	CAT7338 CE
	<i>System - Serial No</i>	Movipack - 13107EEX	<i>Sensor</i>	Model ASH201-EX; SN:7192

MOG :																	
Operating param.	1	H/S	Last Date	Value	Unit	T-1	Ref.	Avg									
Ovrl:Rotation speed	Rot Spd	Hard	03/01/2015 16:49:15	24.7	Hz	24.7	24.7	24.7									
PROCESS PARAMETER		H/S	Last Date	Value	Unit	T-1	Ref.	Avg	Oper.	AlmTyp	DG-	AL-	pA-	pA+	AL+	DG+	Err
1 MOTOR NDE H	3	H/S	Last Date	Value	Unit	T-1	Ref.	Avg	Oper.	AlmTyp	DG-	AL-	pA-	pA+	AL+	DG+	Err
Ovrl:Vib.veloci	OL VEL	Hard	03/01/2015 16:49:15	0.607	mm/s	1.04	0.552	0.602	DfCnd	High	0	0	5.5	5.5	5.5	8.5	0
ISO G1&3 Centr R																	
Ovrl:Acc.20kHz@																	
750-1500rpm Centr	OL ACC	Hard	03/01/2015 16:49:15	0.790	g	0.384	0.181	0.446	DfCnd	High	0	0	2	2	2	4	0
Bearing defect	BRG DEF	Hard	03/01/2015 16:49:15	3.44	DEF	2.59	2.48	2.87	DfCnd	High	0	0	6	6	6	9	0
1 MOTOR NDE V	1	H/S	Last Date	Value	Unit	T-1	Ref.	Avg	Oper.	AlmTyp	DG-	AL-	pA-	pA+	AL+	DG+	Err
Ovrl:Vib.veloci	OL VEL	Hard	03/01/2015 16:49:15	0.722	mm/s	0.613	0.650	0.639	DfCnd	High	0	0	5.5	5.5	5.5	8.5	0
ISO G1&3 Centr R																	
2 MOTOR DE A	1	H/S	Last Date	Value	Unit	T-1	Ref.	Avg	Oper.	AlmTyp	DG-	AL-	pA-	pA+	AL+	DG+	Err
Ovrl:Vib.veloci	OL VEL	Hard	03/01/2015 16:49:15	0.729	mm/s	0.713	0.715	0.657	DfCnd	High	0	0	5.5	5.5	5.5	8.5	0
ISO G1&3 Centr R																	
2 MOTOR DE H	4	H/S	Last Date	Value	Unit	T-1	Ref.	Avg	Oper.	AlmTyp	DG-	AL-	pA-	pA+	AL+	DG+	Err
Ovrl:Vib.veloci	OL VEL	Hard	03/01/2015 16:49:15	2.49	mm/s	0.581	0.573	0.793	DfCnd	High	0	0	5.5	5.5	5.5	8.5	0
ISO G1&3 Centr R																	
Ovrl:Acc.20kHz@																	
750-1500rpm Centr	OL ACC	Hard	03/01/2015 16:49:15	2.30	g	1.01	1.04	1.11	DfCnd	High	0	0	2	2	2	4	0
Bearing defect	BRG DEF	Hard	03/01/2015 16:49:15	5.86	DEF	3.99	4.45	4.31	DfCnd	High	0	0	6	6	6	9	0
Temperature	TEMP	Hard	03/01/2015 16:49:15	36.0	°C	35.7	32.1	38.3	DfCnd	High	0	0	70	70	70	90	0
2 MOTOR DE V	1	H/S	Last Date	Value	Unit	T-1	Ref.	Avg	Oper.	AlmTyp	DG-	AL-	pA-	pA+	AL+	DG+	Err
Ovrl:Vib.veloci	OL VEL	Hard	03/01/2015 16:49:15	2.60	mm/s	0.719	0.836	1.07	DfCnd	High	0	0	5.5	5.5	5.5	8.5	0
ISO G1&3 Centr R																	
3 DRIVEN DE A	1	H/S	Last Date	Value	Unit	T-1	Ref.	Avg	Oper.	AlmTyp	DG-	AL-	pA-	pA+	AL+	DG+	Err
Ovrl:Vib.veloci	OL VEL	Hard	03/01/2015 16:49:15	2.11	mm/s	2.68	3.51	2.88	DfCnd	High	0	0	5.5	5.5	5.5	8.5	0
ISO G1&3 Centr R																	
3 DRIVEN DE H	4	H/S	Last Date	Value	Unit	T-1	Ref.	Avg	Oper.	AlmTyp	DG-	AL-	pA-	pA+	AL+	DG+	Err
Ovrl:Vib.veloci	OL VEL	Hard	03/01/2015 16:49:15	5.70	mm/s	5.61	7.41	6.05	DfCnd	High	0	0	5.5	5.5	5.5	8.5	0
ISO G1&3 Centr R																	
Ovrl:Acc.20kHz@																	
750-1500rpm Centr	OL ACC	Hard	03/01/2015 16:49:15	0.840	g	0.809	1.37	1.42	DfCnd	High	0	0	2	2	2	4	0
Bearing defect	BRG DEF	Hard	03/01/2015 16:49:15	3.51	DEF	3.31	3.94	4.19	DfCnd	High	0	0	6	6	6	9	0
Temperature	TEMP	Hard	03/01/2015 16:49:15	43.4	°C	45.0	45.7	42.1	DfCnd	High	0	0	70	70	70	90	0

MELLITAH OIL & GAS\NC 41\TRAIN 1 -

(+)\UNIT 581 - H2\

51-581-PA-002B

<i>Selected Date</i>	03/01/2015 16:49:15	<i>Speed</i>	24.7 Hz / 1482 rpm
<i>Author</i>	MOG	<i>Connector</i>	CAT7338 CE
<i>System - Serial No</i>	Movipack - 13107EEX	<i>Sensor</i>	Model ASH201-EX; SN:7192

MOG :

3 DRIVEN DE V	1	H/S	Last Date	Value	Unit	T-1	Ref.	Avg	Oper.	AlmTyp	DG-	AL-	pA-	pA+	AL+	DG+	Err
Ovrl:Vib.veloci ISO G1&3 Centr R	OL VEL	Hard	03/01/2015 16:49:15	3.91 mm/s		3.89	3.43	3.68	DfCnd	High	0	0	5.5	5.5	5.5	8.5	0
4 DRIVEN NDE H	4	H/S	Last Date	Value	Unit	T-1	Ref.	Avg	Oper.	AlmTyp	DG-	AL-	pA-	pA+	AL+	DG+	Err
Ovrl:Vib.veloci ISO G1&3 Centr R	OL VEL	Hard	03/01/2015 16:49:15	3.94 mm/s		4.07	5.51	4.40	DfCnd	High	0	0	5.5	5.5	5.5	8.5	0
Ovrl:Acc.20kHz@ 750-1500rpm Centr	OL ACC	Hard	03/01/2015 16:49:15	0.951 g		1.09	1.31	1.48	DfCnd	High	0	0	2	2	2	4	0
Bearing defect	BRG DEF	Hard	03/01/2015 16:49:15	3.66 DEF		3.47	3.75	4.19	DfCnd	High	0	0	6	6	6	9	0
Temperature	TEMP	Hard	03/01/2015 16:49:15	39.3 °C		44.7	36.0	39.6	DfCnd	High	0	0	70	70	70	90	0
4 DRIVEN NDE V	1	H/S	Last Date	Value	Unit	T-1	Ref.	Avg	Oper.	AlmTyp	DG-	AL-	pA-	pA+	AL+	DG+	Err
Ovrl:Vib.veloci ISO G1&3 Centr R	OL VEL	Hard	03/01/2015 16:49:15	2.64 mm/s		2.76	3.06	2.77	DfCnd	High	0	0	5.5	5.5	5.5	8.5	0

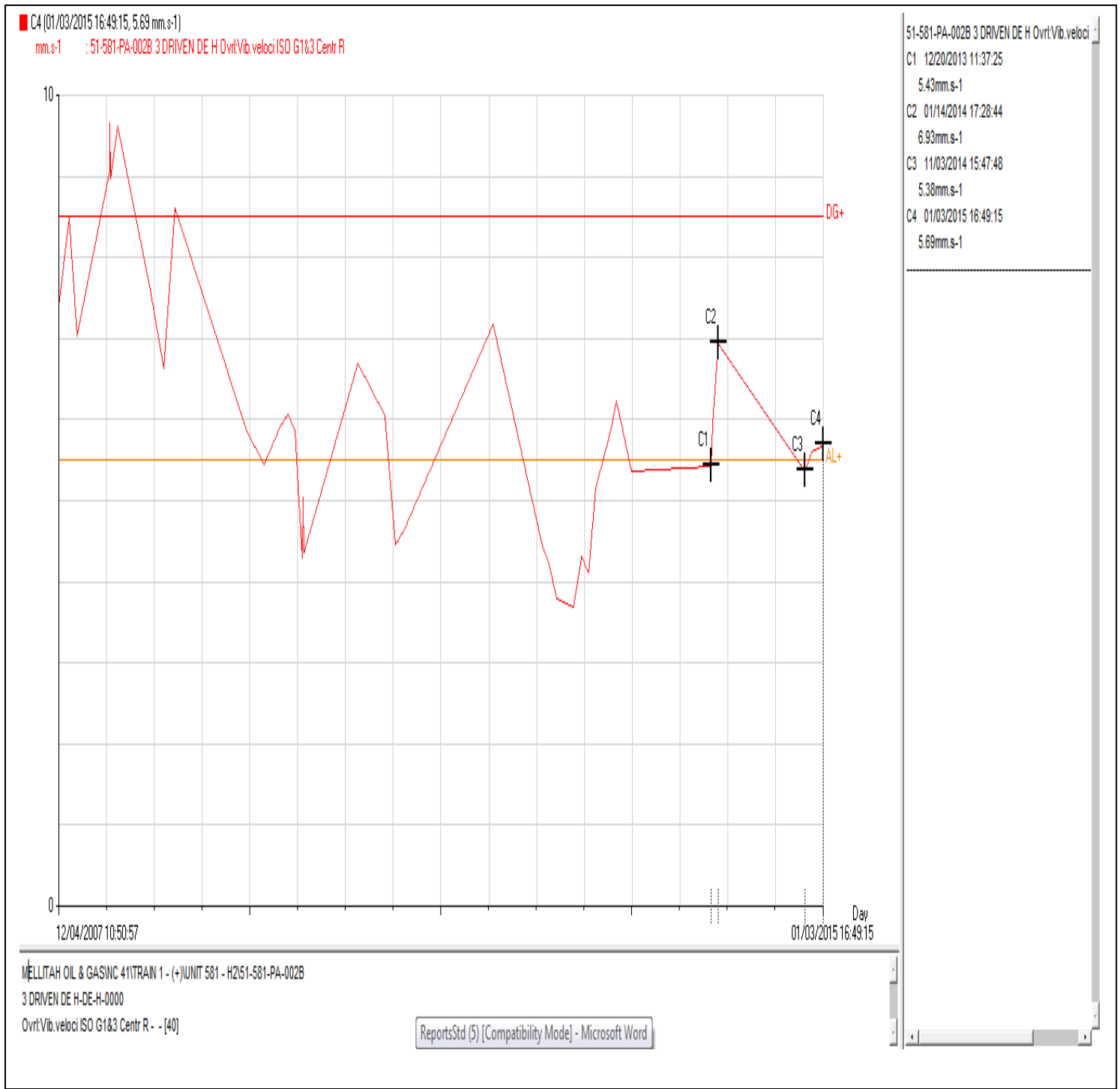


Figure (1).Trend of highest overall vibration (velocity) recorded on the horizontal drive end pump

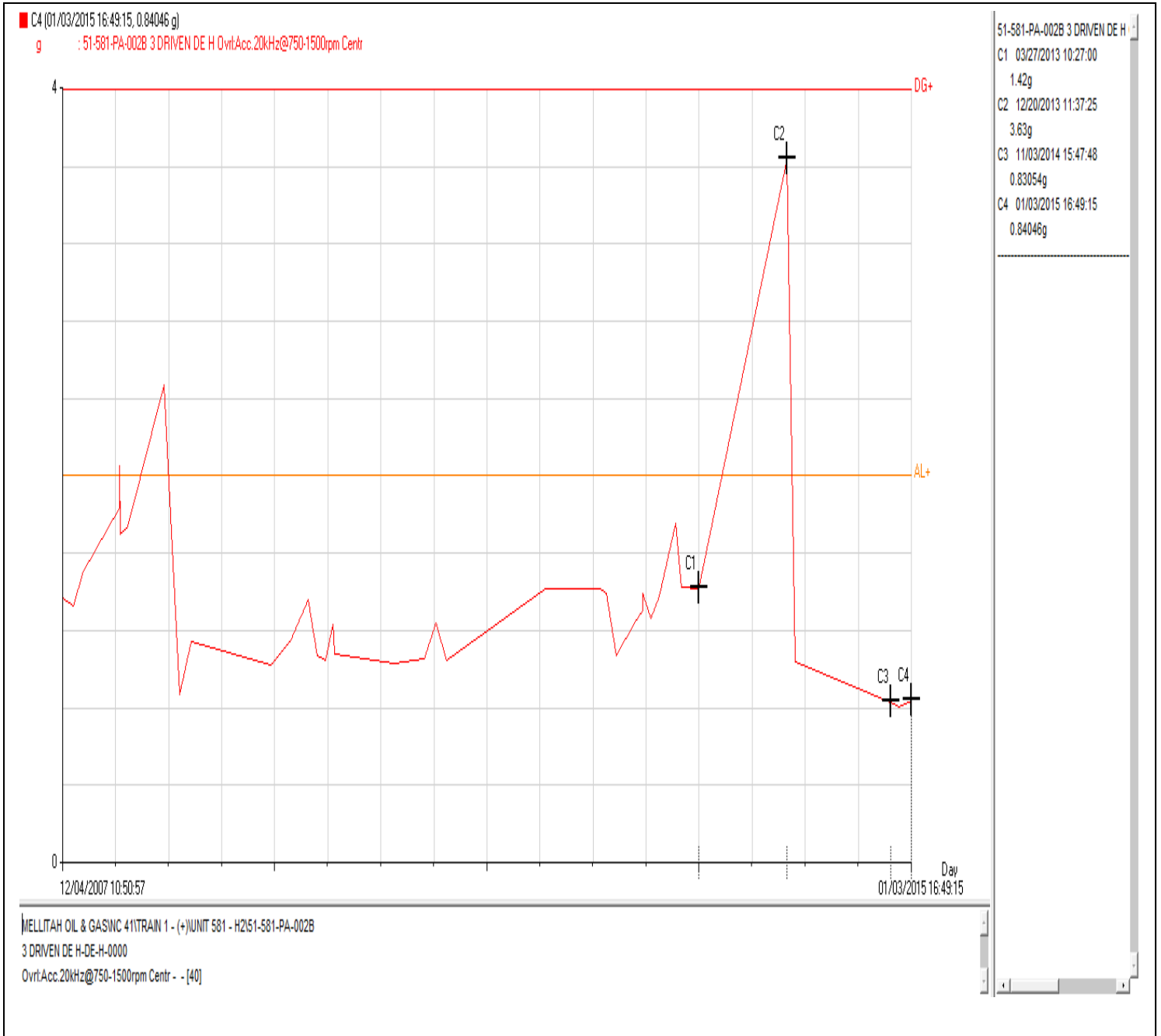


Figure (2).Trend of highest overall vibration (spike energy) recorded on the horizontal drive end pump

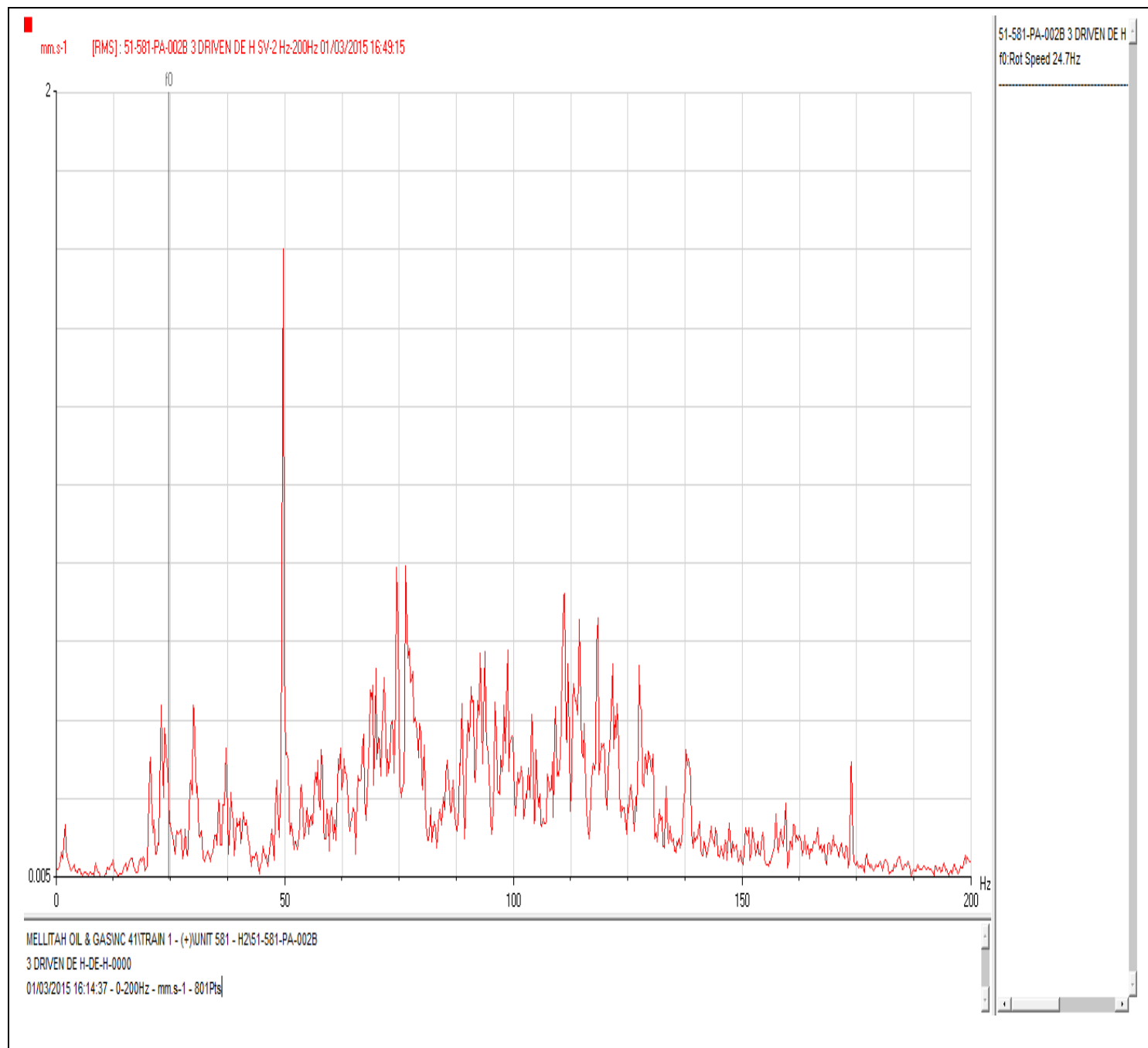


Figure (3) Spectrum of vibration recorded on the horizontal drive end pump

Data History Report
Filter: Equipment name (+) \ Tree order (+) Parameter type: Hard Alarm type: Danger \ Alarm \ Ok

MELLITAH OIL & GAS\NC 41\TRAIN 1 - (+)\UNIT 581 - H2\						
51-581-PA-002B						
Point fonctionnement						
Date	03/01/2015 16:49:15	27/11/2014 11:27:22	03/11/2014 15:47:48	14/01/2014 17:28:44	27/12/2013 15:45:16	20/12/2013 11:37:25
Condition	DfCnd	DfCnd	DfCnd	DfCnd	DfCnd	DfCnd
Speed	24.7 Hz 1482 rpm	24.7 Hz 1482 rpm	24.7 Hz 1482 rpm	24.7 Hz 1482 rpm	24.7 Hz 1482 rpm	24.7 Hz 1482 rpm
Traceability	MOG Movipack-13107EEX Model ASH201-EX; SN:7192 CAT7338 CE	MOG Movipack-13108EEX Model ASH201-EX; SN:7193 CAT1340 CE	MOG Movipack-13107EEX Model ASH201-EX; SN:7192 CAT7338 CE	MOG Movipack-13108EEX Model ASH201-EX; SN:7193 CAT1340 CE	MOG Movipack-12078EEX ACCEL. MODEL:766-35 SN:274 4611AAB	MOG Movipack-13108EEX Model ASH201-EX; SN:7193 CAT1340 CE
PROCESS PARAMETER						
Date	03/01/2015 16:49:15	27/11/2014 11:27:22	03/11/2014 15:47:48	14/01/2014 17:28:44	27/12/2013 15:45:16	20/12/2013 11:37:25
Condition	DfCnd	DfCnd	DfCnd	DfCnd	DfCnd	DfCnd
Speed	24.7 Hz 1482 rpm	24.7 Hz 1482 rpm	24.7 Hz 1482 rpm	24.7 Hz 1482 rpm	24.7 Hz 1482 rpm	24.7 Hz 1482 rpm
Traceability	MOG Movipack-13107EEX Model ASH201-EX; SN:7192 CAT7338 CE	MOG Movipack-13108EEX Model ASH201-EX; SN:7193 CAT1340 CE	MOG Movipack-13107EEX Model ASH201-EX; SN:7192 CAT7338 CE	MOG Movipack-13108EEX Model ASH201-EX; SN:7193 CAT1340 CE	MOG Movipack-12078EEX ACCEL. MODEL:766-35 SN:274 4611AAB	MOG Movipack-13108EEX Model ASH201-EX; SN:7193 CAT1340 CE
1 MOTOR NDE H						
Date	03/01/2015 16:49:15	27/11/2014 11:27:22	03/11/2014 15:47:48	14/01/2014 17:28:44	27/12/2013 15:45:16	20/12/2013 11:37:25
Condition	DfCnd	DfCnd	DfCnd	DfCnd	DfCnd	DfCnd
Speed	24.7 Hz 1482 rpm	24.7 Hz 1482 rpm	24.7 Hz 1482 rpm	24.7 Hz 1482 rpm	24.7 Hz 1482 rpm	24.7 Hz 1482 rpm
Traceability	MOG Movipack-13107EEX Model ASH201-EX; SN:7192 CAT7338 CE	MOG Movipack-13108EEX Model ASH201-EX; SN:7193 CAT1340 CE	MOG Movipack-13107EEX Model ASH201-EX; SN:7192 CAT7338 CE	MOG Movipack-13108EEX Model ASH201-EX; SN:7193 CAT1340 CE	MOG Movipack-12078EEX ACCEL. MODEL:766-35 SN:274 4611AAB	MOG Movipack-13108EEX Model ASH201-EX; SN:7193 CAT1340 CE
Ovrl:Vib.veloci ISO G1&3 Centr R	0.607 mm/s	1.04 mm/s	0.687 mm/s	0.834 mm/s	0.711 mm/s	0.625 mm/s
Ovrl:Acc.20kHz@750-1500rpm Centr	0.790 g	0.384 g	0.637 g	0.342 g	0.563 g	0.567 g
Bearing defect	3.44 DEF	2.59 DEF	3.19 DEF	2.71 DEF	2.71 DEF	2.83 DEF
1 MOTOR NDE V						
Date	03/01/2015 16:49:15	27/11/2014 11:27:22	03/11/2014 15:47:48	14/01/2014 17:28:44	27/12/2013 15:45:16	20/12/2013 11:37:25
Condition	DfCnd	DfCnd	DfCnd	DfCnd	DfCnd	DfCnd
Speed	24.7 Hz 1482 rpm	24.7 Hz 1482 rpm	24.7 Hz 1482 rpm	24.7 Hz 1482 rpm	24.7 Hz 1482 rpm	24.7 Hz 1482 rpm
Traceability	MOG Movipack-13107EEX Model ASH201-EX; SN:7192	MOG Movipack-13108EEX Model ASH201-EX; SN:7193	MOG Movipack-13107EEX Model ASH201-EX; SN:7192	MOG Movipack-13108EEX Model ASH201-EX; SN:7193	MOG Movipack-12078EEX ACCEL. MODEL:766-35 SN:274	MOG Movipack-13108EEX Model ASH201-EX; SN:7193


MELLITAH OIL & GAS\NC 41\TRAIN 1 - (+)\UNIT 581 - H2\51-581-PA-002B						
Ovrl:Vib.veloci ISO G1&3 Centr R	CAT7338 CE 0.722 mm/s	CAT1340 CE 0.613 mm/s	CAT7338 CE 0.724 mm/s	CAT1340 CE 0.864 mm/s	4611AAB 0.771 mm/s	CAT1340 CE 0.671 mm/s
2 MOTOR DE A	Date	03/01/2015 16:49:15	27/11/2014 11:27:22	03/11/2014 15:47:48	14/01/2014 17:28:44	27/12/2013 15:45:16
	Condition	DfCnd	DfCnd	DfCnd	DfCnd	DfCnd
	Speed	24.7 Hz 1482 rpm	24.7 Hz 1482 rpm	24.7 Hz 1482 rpm	24.7 Hz 1482 rpm	24.7 Hz 1482 rpm
	Traceability	MOG	MOG	MOG	MOG	MOG
		Movipack-13107EEX Model ASH201-EX; SN:7192 CAT7338 CE	Movipack-13108EEX Model ASH201-EX; SN:7193 CAT1340 CE	Movipack-13107EEX Model ASH201-EX; SN:7192 CAT7338 CE	Movipack-13108EEX Model ASH201-EX; SN:7193 CAT1340 CE	Movipack-13108EEX Model ASH201-EX; SN:7193 CAT1340 CE
Ovrl:Vib.veloci ISO G1&3 Centr R	0.729 mm/s	0.713 mm/s	0.752 mm/s	1.18 mm/s	0.730 mm/s	0.626 mm/s
2 MOTOR DE H	Date	03/01/2015 16:49:15	27/11/2014 11:27:22	03/11/2014 15:47:48	14/01/2014 17:28:44	27/12/2013 15:45:16
	Condition	DfCnd	DfCnd	DfCnd	DfCnd	DfCnd
	Speed	24.7 Hz 1482 rpm	24.7 Hz 1482 rpm	24.7 Hz 1482 rpm	24.7 Hz 1482 rpm	24.7 Hz 1482 rpm
	Traceability	MOG	MOG	MOG	MOG	MOG
		Movipack-13107EEX Model ASH201-EX; SN:7192 CAT7338 CE	Movipack-13108EEX Model ASH201-EX; SN:7193 CAT1340 CE	Movipack-13107EEX Model ASH201-EX; SN:7192 CAT7338 CE	Movipack-13108EEX Model ASH201-EX; SN:7193 CAT1340 CE	Movipack-13108EEX Model ASH201-EX; SN:7193 CAT1340 CE
Ovrl:Vib.veloci ISO G1&3 Centr R	2.49 mm/s	0.581 mm/s	0.621 mm/s	0.814 mm/s	0.700 mm/s	0.607 mm/s
Ovrl:Acc.20kHz@750-1500rpm Centr	2.30 g	1.01 g	1.21 g	1.57 g	0.958 g	1.02 g
Bearing defect	5.86 DEF	3.99 DEF	4.68 DEF	5.11 DEF	4.12 DEF	3.90 DEF
Temperature	36.0 °C	35.7 °C	36.4 °C	21.4 °C	28.6 °C	35.6 °C
2 MOTOR DE V	Date	03/01/2015 16:49:15	27/11/2014 11:27:22	03/11/2014 15:47:48	14/01/2014 17:28:44	27/12/2013 15:45:16
	Condition	DfCnd	DfCnd	DfCnd	DfCnd	DfCnd
	Speed	24.7 Hz 1482 rpm	24.7 Hz 1482 rpm	24.7 Hz 1482 rpm	24.7 Hz 1482 rpm	24.7 Hz 1482 rpm
	Traceability	MOG	MOG	MOG	MOG	MOG
		Movipack-13107EEX Model ASH201-EX; SN:7192 CAT7338 CE	Movipack-13108EEX Model ASH201-EX; SN:7193 CAT1340 CE	Movipack-13107EEX Model ASH201-EX; SN:7192 CAT7338 CE	Movipack-13108EEX Model ASH201-EX; SN:7193 CAT1340 CE	Movipack-13108EEX Model ASH201-EX; SN:7193 CAT1340 CE
Ovrl:Vib.veloci ISO G1&3 Centr R	2.60 mm/s	0.719 mm/s	0.719 mm/s	2.17 mm/s	0.889 mm/s	0.708 mm/s
3 DRIVEN DE A	Date	03/01/2015 16:49:15	27/11/2014 11:27:22	03/11/2014 15:47:48	14/01/2014 17:28:44	27/12/2013 15:45:16
	Condition	DfCnd	DfCnd	DfCnd	DfCnd	DfCnd
	Speed	24.7 Hz 1482 rpm	24.7 Hz 1482 rpm	24.7 Hz 1482 rpm	24.7 Hz 1482 rpm	24.7 Hz 1482 rpm
	Traceability	MOG	MOG	MOG	MOG	MOG
		Movipack-13107EEX Model ASH201-EX; SN:7192 CAT7338 CE	Movipack-13108EEX Model ASH201-EX; SN:7193 CAT1340 CE	Movipack-13107EEX Model ASH201-EX; SN:7192 CAT7338 CE	Movipack-13108EEX Model ASH201-EX; SN:7193 CAT1340 CE	Movipack-13108EEX Model ASH201-EX; SN:7193 CAT1340 CE

MELLITAH OIL & GAS\NC 41\TRAIN 1 - (+)\UNIT 581 - H2\51-581-PA-002B						
	ASH201-EX; SN:7192 CAT7338 CE	ASH201-EX; SN:7193 CAT1340 CE	ASH201-EX; SN:7192 CAT7338 CE	ASH201-EX; SN:7193 CAT1340 CE	MODEL:766-35 SN:274 4611AAB	ASH201-EX; SN:7193 CAT1340 CE
Ovrl:Vib.veloci ISO G1&3 Centr R	2.11 mm/s	2.68 mm/s	2.37 mm/s	2.88 mm/s	3.33 mm/s	3.54 mm/s
3 DRIVEN DE H						
Date	03/01/2015 16:49:15	27/11/2014 11:27:22	03/11/2014 15:47:48	14/01/2014 17:28:44	27/12/2013 15:45:16	20/12/2013 11:37:25
Condition	DfCnd	DfCnd	DfCnd	DfCnd	DfCnd	DfCnd
Speed	24.7 Hz 1482 rpm	24.7 Hz 1482 rpm	24.7 Hz 1482 rpm	24.7 Hz 1482 rpm	24.7 Hz 1482 rpm	24.7 Hz 1482 rpm
Traceability	MOG Movipack-13107EEX Model ASH201-EX; SN:7192 CAT7338 CE	MOG Movipack-13108EEX Model ASH201-EX; SN:7193 CAT1340 CE	MOG Movipack-13107EEX Model ASH201-EX; SN:7192 CAT7338 CE	MOG Movipack-13108EEX Model ASH201-EX; SN:7193 CAT1340 CE	MOG Movipack-12078EEX ACCEL. MODEL:766-35 SN:274 4611AAB	MOG Movipack-13108EEX Model ASH201-EX; SN:7193 CAT1340 CE
Ovrl:Vib.veloci ISO G1&3 Centr R	5.70 mm/s	5.61 mm/s	5.38 mm/s	6.94 mm/s	5.97 mm/s	5.44 mm/s
Ovrl:Acc.20kHz@750-1500rpm Centr	0.840 g	0.809 g	0.831 g	1.04 g	3.13 g	3.64 g
Bearing defect	3.51 DEF	3.31 DEF	3.40 DEF	3.41 DEF	6.18 DEF	6.43 DEF
Temperature	43.4 °C	45.0 °C	48.1 °C	22.9 °C	44.1 °C	40.7 °C
3 DRIVEN DE V						
Date	03/01/2015 16:49:15	27/11/2014 11:27:22	03/11/2014 15:47:48	14/01/2014 17:28:44	27/12/2013 15:45:16	20/12/2013 11:37:25
Condition	DfCnd	DfCnd	DfCnd	DfCnd	DfCnd	DfCnd
Speed	24.7 Hz 1482 rpm	24.7 Hz 1482 rpm	24.7 Hz 1482 rpm	24.7 Hz 1482 rpm	24.7 Hz 1482 rpm	24.7 Hz 1482 rpm
Traceability	MOG Movipack-13107EEX Model ASH201-EX; SN:7192 CAT7338 CE	MOG Movipack-13108EEX Model ASH201-EX; SN:7193 CAT1340 CE	MOG Movipack-13107EEX Model ASH201-EX; SN:7192 CAT7338 CE	MOG Movipack-13108EEX Model ASH201-EX; SN:7193 CAT1340 CE	MOG Movipack-12078EEX ACCEL. MODEL:766-35 SN:274 4611AAB	MOG Movipack-13108EEX Model ASH201-EX; SN:7193 CAT1340 CE
Ovrl:Vib.veloci ISO G1&3 Centr R	3.91 mm/s	3.89 mm/s	3.41 mm/s	4.75 mm/s	5.39 mm/s	5.64 mm/s
4 DRIVEN NDE H						
Date	03/01/2015 16:49:15	27/11/2014 11:27:22	03/11/2014 15:47:48	14/01/2014 17:28:44	27/12/2013 15:45:16	20/12/2013 11:37:25
Condition	DfCnd	DfCnd	DfCnd	DfCnd	DfCnd	DfCnd
Speed	24.7 Hz 1482 rpm	24.7 Hz 1482 rpm	24.7 Hz 1482 rpm	24.7 Hz 1482 rpm	24.7 Hz 1482 rpm	24.7 Hz 1482 rpm
Traceability	MOG Movipack-13107EEX Model ASH201-EX; SN:7192 CAT7338 CE	MOG Movipack-13108EEX Model ASH201-EX; SN:7193 CAT1340 CE	MOG Movipack-13107EEX Model ASH201-EX; SN:7192 CAT7338 CE	MOG Movipack-13108EEX Model ASH201-EX; SN:7193 CAT1340 CE	MOG Movipack-12078EEX ACCEL. MODEL:766-35 SN:274 4611AAB	MOG Movipack-13108EEX Model ASH201-EX; SN:7193 CAT1340 CE
Ovrl:Vib.veloci ISO G1&3 Centr R	3.94 mm/s	4.07 mm/s	3.33 mm/s	5.06 mm/s	4.56 mm/s	4.06 mm/s
Ovrl:Acc.20kHz@750-1500rpm Centr	0.951 g	1.09 g	0.937 g	1.28 g	3.81 g	4.29 g
Bearing defect	3.66 DEF	3.47 DEF	3.53 DEF	3.90 DEF	6.56 DEF	6.75 DEF
Temperature	39.3 °C	44.7 °C	47.8 °C	21.3 °C	37.1 °C	38.7 °C
4 DRIVEN NDE V						
Date	03/01/2015 16:49:15	27/11/2014 11:27:22	03/11/2014 15:47:48	14/01/2014 17:28:44	27/12/2013 15:45:16	20/12/2013 11:37:25
Condition	DfCnd	DfCnd	DfCnd	DfCnd	DfCnd	DfCnd

MELLITAH OIL & GAS\NC 41\TRAIN 1 - (+)\UNIT 581 - H2\51-581-PA-002B						
Speed	24.7 Hz 1482 rpm	24.7 Hz 1482 rpm	24.7 Hz 1482 rpm	24.7 Hz 1482 rpm	24.7 Hz 1482 rpm	24.7 Hz 1482 rpm
	MOG Movipack-13107EEX Model ASH201-EX; SN:7192 CAT7338 CE	MOG Movipack-13108EEX Model ASH201-EX; SN:7193 CAT1340 CE	MOG Movipack-13107EEX Model ASH201-EX; SN:7192 CAT7338 CE	MOG Movipack-13108EEX Model ASH201-EX; SN:7193 CAT1340 CE	MOG Movipack-12078EEX ACCEL. MODEL:766-35 SN:274 4611AAB	MOG Movipack-13108EEX Model ASH201-EX; SN:7193 CAT1340 CE
Traceability						
Ovrl:Vib.veloci ISO G1&3 Centr R	2.64 mm/s	2.76 mm/s	2.65 mm/s	3.38 mm/s	4.55 mm/s	4.81 mm/s

Equipments List Report

Filter: Equipment name (+) \ Tree order (+)

#459	51-581-PA-002B	Function : <None>	Type: <None>	PA-002B
<i>Measurement points</i>	11	<i>Speed (Hz)</i>	24.7	
<i>Parameters</i>	52	<i>Normal period (d)</i>	60	
<i>Operating parameters</i>	1	<i>Alarm period (d)</i>	15	
<i>Signals</i>	30	<i>Last date</i>	03/01/2015 16:49:15	
		<i>Next date</i>	18/01/2015 16:49:15	
<Comments>		<Bearing References>		
Power: 530 KW RPM: 1485 Q: 1327 m3/h H: 73 m EM DE Brg.: NU224MC3+6224C3		NDE - NU224 [SKF] DE - NU224 [SKF] DE - 6224 [SKF] DE - NU2213 [SKF] NDE - 7222B [SKF]		