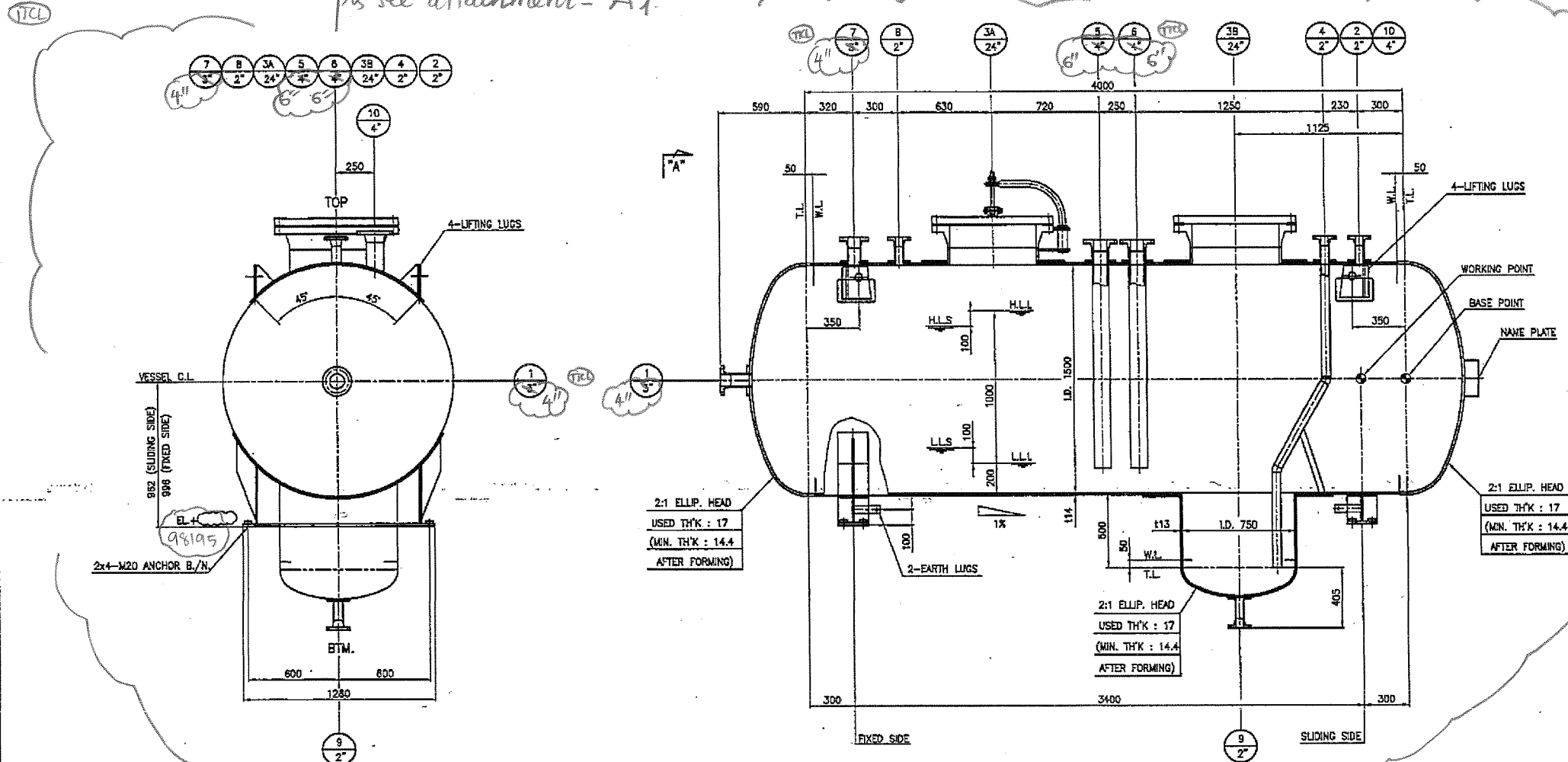


pls see attachment - A1



RECEIVED ON: 30/12/06

3: AP (APPROVED)

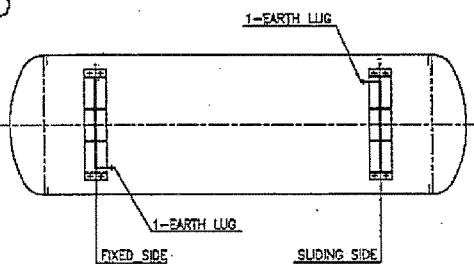
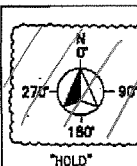
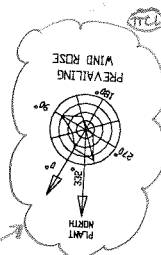
2: RV/AN (REVIEWED/APPROVED WITH COMMENTS)

1: RE (NOT APPROVED)

NR: NOT TO BE RETURNED

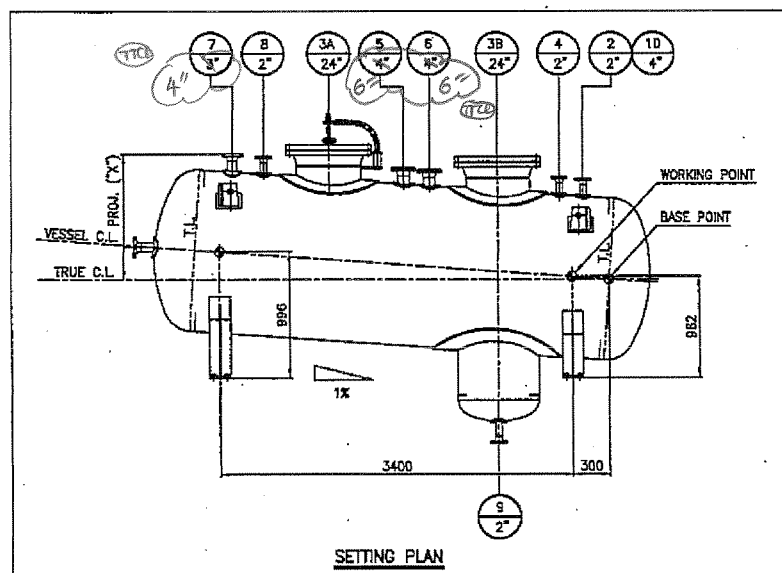
RETURNED ON: AUG 2 06

PROJECT ORIGINATOR



KEY PLAN

SIDE ELEVATION



SETTING PLAN

NOZZ. MARK	PROJECTION OF NOZZLE FACE FROM TRUE C.L. TO FLANGE FACE "X" (mm)
2	953 1034
3A	1090 1180
3B	1073 1058
4	1322 1034
5	982 1034
6	982 1034
7	998 1034
8	995 1034
9	1058 1034

Vendor please see "General common comments of General Assembly" as per Attachment - 4

NO.	NAME	DATE	REV.	DATE	ISSUE	DRWN	CHKD	APPD
06	NAME PLATE DETAIL	8474L-420-A1109-0810-111-025						
05	NOZZLE DETAIL (3/3)	8474L-420-A1109-0810-111-024						
04	NOZZLE DETAIL (2/3)	8474L-420-A1109-0810-111-023						
03	NOZZLE DETAIL (1/3)	8474L-420-A1109-0810-111-022						
02	MANHOLE DETAIL	8474L-420-A1109-0810-111-021						
01	BODY DETAIL	8474L-420-A1109-0810-111-020						
SER. NO.	TITLE	DWG. NO.	REV.	DATE	ISSUE	DRWN	CHKD	APPD

REFERENCE DWG.

DESCRIPTION

DESIGN DATA

CODE	ASME SEC. VIII DIV. 1 (2004 EDITION) 8008-1995	TYPE	HORIZONTAL
NO. RD'D	1 (ONE)	SIZE	LD 1500 x 4000
PRESSURE (kg/cm ²)	DESIGN (IN/EXT.) 3.5 / F.V. 0.0	CODE STAMP	NO
TEMP. (°C)	DESIGN (IN/EXT.) 101 / 150	WEIGHT (kg)	EMPTY 4140
TEST PRESSURE (kg/cm ²)	HYDRO. (SHOP) 13.85	VOLUME (M ³)	8.228
M.A.W.P. (kg/cm ²)	HOT & CORRO. 10.64	WIND CODE	ASCE 7-02 Exp. C Cat. 3 / 2004 W/12
CORR. ALLOW. (mm)	COLD & NEW 18.86	SEISMIC ZONE	URC-97, ZONE 2A
CORR. ALLOW. FOR INTERNAL (mm)	WELDED: 6 / REMOVAL: 3	DENSITY (LIQUID) (kg/m ³)	700-980
RADIOGRAPH (SHELL/HEAD)	100% FULL	INSULATION (mm)	NO
JOINT EFF. (%)	85 / 100	PURE PROOF. (mm)	NO
P.W.M.T.	YES	S.A. HEAD COVER AFTER COLD FORMING	YES (BOAT HEAD)
FLUID	-	STD NOZZLE FLANGE	125-250 AWW
M.D.M.T. (°C)	18		
PAINT	SPEC. 8474L-000-150-2310-001-0		

NOZZLE LIST

MARK REP	DESIGNATION	Q T Y	STAND OUT	PIPES			FLANGES		REINFORCEMENT		
				Δ NB	SCH	THK	TYPE	RATING	FACE (4)	THK	WIDE
1	SOUR WATER INLET	1	SEE DWG	4"	160	—	WN	150	RF	14	70
2	VENT	1	SEE DWG	2"	XXS	—	WN	150	RF	—	—
3A	MANWAY	1	SEE DWG	24"	—	H12	WN	150	RF	20	250
3B	PUMP OUT (W/BF)	1	SEE DWG	24"	—	H12	WN	150	RF	20	250
4	STEAM OUT/DRAW OFF	1	SEE DWG	2"	XXS	—	WN	150	RF	0	—
5	LEVEL TRANSMITTER (CONTROL)	1	SEE DWG	6"	120	—	WN	300	RF	14	70
6	LEVEL TRANSMITTER (TRIP)	1	SEE DWG	6"	120	—	WN	300	RF	14	70
7	FLARE CONNECTION	1	SEE DWG	4"	160	—	WN	150	RF	14	70
8	TEMPERATURE GAUGE	1	SEE DWG	0.2"	XXS	—	WN	150	RF	—	—
9	DRAIN	1	SEE DWG	2"	XXS	—	WN	150	RF	—	—
10	VENTILATION WITH BLIND FLANGE	1	SEE DWG	4"	160	—	WN	150	RF	14	70

NOTES

- ALL DIMENSIONS ARE IN MM UNLESS OTHERWISE NOTED.
- ALL BOLT HOLES SHALL BE STRADDLE WITH NORTH & SOUTH CENTER LINE OR NATURAL HORIZ. & VERT. CENTER LINE OF EQUIPMENT UNLESS OTHERWISE NOTED.
- ALL PADS FOR NOZZLE OR ATTACHMENTS SHALL BE PROVIDED WITH NET 1/4" TELL TALE HOLE IS ALWAYS SITUATED AT LOWER PART OF REINFORCEMENT.
- AFTER TEST 1/4" TELL TALE HOLE SHALL BE FILLED WITH THREADED TUBE EXTENDING BEYOND INSULATION (THREADED TUBE SHALL ONLY BE PROVIDED ON INSULATED VESSEL.)
- GASKET MATERIAL: SPIRAL WOUND (N.S.)
- FILLER: GRAPHITE - INNER RING: 316 S.S.
- HOOP: 316 S.S. - OUTER RING: C.S.
- STEAM OUT CONDITION OF 1.5 kg/cm²(g) @ 160°C & F.V.
- VESSEL IS IN SEVERE WET HPS SERVICE.

SHELL	AS16-80+HC	ANCHOR BOLT/NUT	A307-B/563-A
HEAD	AS16-80+HC	EXTL. BOLT/NUT	A193-B7/SA194-2H
SUPPORT SADDLE	AS16-80	INT'L BOLT/NUT	A193-B6/SA194-6
MANHOLE FLANGE	SA105	FITTING	A234-WPB
MANHOLE NECK PLATE	AS16-80+HC	EARTH LUG	A240-304
NOZZLE FLANGE	SA105	INTERVALS (FIXED)	AS16-80+HC
NOZZLE NECK	SA108-B	INTERVALS (REMOVABLE)	AS16-80+HC

MATERIAL SPECIFICATIONS

PROJECT VIETNAM OIL AND GAS CORPORATION (PETROVIETNAM)
DUNG QUAT REFINERY PROJECT
DUNG QUAT, VIETNAM

Technip JGC

DASCHANG HYDRO CORPORATION ULSAN KOREA

TITLE	D-1807 SOUR WATER DRAIN DRUM (GENERAL ASSEMBLY)
OWNER DOC. NUMBER	DOCUMENT CLASS: X
P.O. NO.	8474L-420-PO-0810-11-0-43045
SCALE	1 / 18
JOB NO.	O-3852-20