

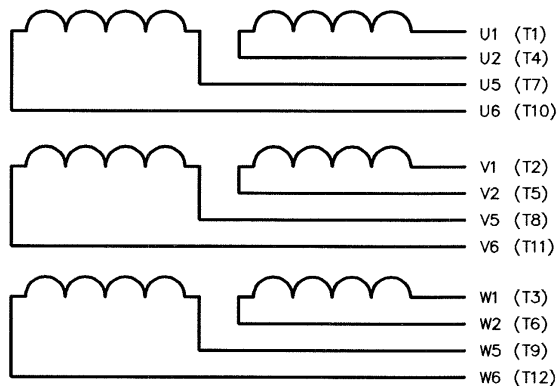
DA7-A807

ISSUE
F

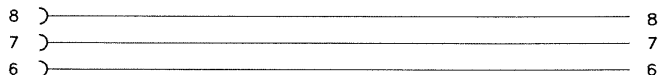
IF IN DOUBT-ASK

FIRST W.O.

MAIN STATOR (12 ENDS)



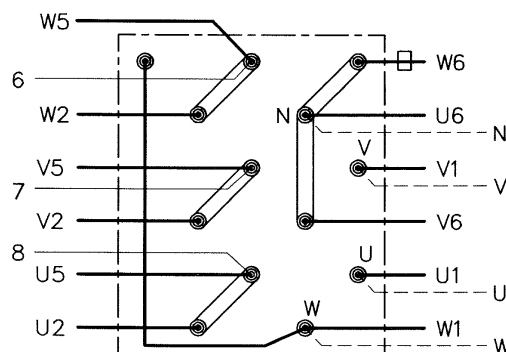
(T1) = NEMA EQUIVALENT

CONNECT TO
AVR

DEPENDING ON AVR TYPE MULTIPLE LEADS (6,7,8) WILL BE REQUIRED.
LEAD 6 MAY NOT BE REQUIRED
FULL DETAILS ARE SHOWN ON THE BASE DIAGRAM.

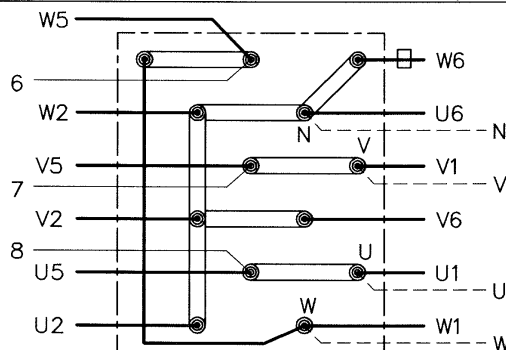
MAIN TERMINAL CONNECTIONS

SERIES STAR 3PH 4W
OUTPUT TERMINALS U.V.W.N.
(CUSTOMER CONNECTIONS SHOWN DOTTED)

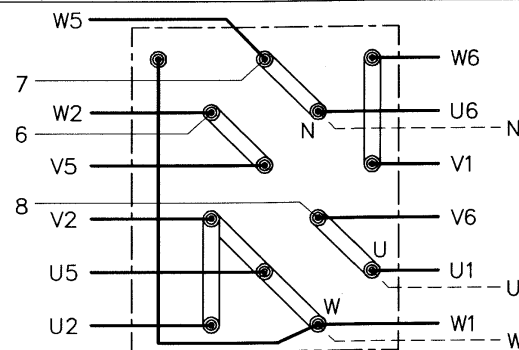


□ DROOP C/T POSITION (when fitted)
CONNECTIONS ARE SHOWN ON BASE DIAGRAM

PARALLEL STAR 3PH 4W
OUTPUT TERMINALS U.V.W.N.
(CUSTOMER CONNECTIONS SHOWN DOTTED)



DOUBLE DELTA 1PH 3W
OUTPUT TERMINALS U.W.N.
(CUSTOMER CONNECTIONS SHOWN DOTTED)



NOTE:
DROOP NOT AVAILABLE
IF 110V SUPPLIES NEEDED 'N' MUST NOT BE EARTHED.
FLOATING EARTH OR 'W' EARTH CAN BE USED.

CONNECTION DIAGRAM

4/7163/1	F	JWS	01.03.04	ADDED FRAME SIZE UC22 - UC27
4/3351/1	E	SMH	02:05:01	DROOP C/T - POSITION CHANGE FROM W2 TO W6
3/9977/2	D	SMH	25:04:95	LEAD 6 ADDED TO MAIN TERMINAL CONNECTIONS
3/9159	C	SMH	12:04:94	POSITION CHANGE OF DROOP TRANSFORMER W5 TO W2 (PARALLEL/SERIES STAR)
3/8945-1	B	MLW	13.01.94	NOTE ADDED TO DOUBLE DELTA & CUSTOMER CONNECTIONS ADDED
3/8867-2	A	P.N.	15:12:93	ORIGINAL ISSUE
MOD.	ISS.	DRN.	DATE	ALTERATION

CERTIFIED PRINT
(ONLY IF SIGNED)

BY
DATE

DRAWN P.N. 15:12:93
CH'D 1/3/04
APP'D 2-3-04

FRAME UC22 - UC27
CONTROL SERIES ---
POLES

No. OF ENDS 12
SENSING 2 PHASE
NEWAGE INTERNATIONAL Ltd
STAMFORD, ENGLAND

OTHER FEATURES
SPECIAL TERMINAL ARR.

DA7-A807

ISSUE
F

SHEET 1 OF 1 SHEETS