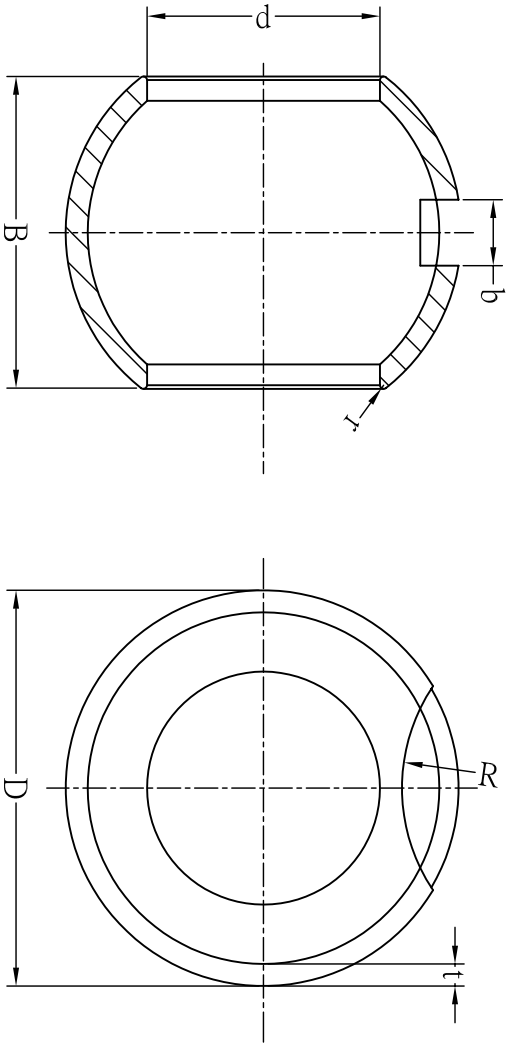



Without Core & Tubular Conduit

*Sphericalness (Outside dia) 1/2"~3" ±0.05 , 4"~10"±0.10
*W/Kgs ±10%. (W/Kgs refers to ball's finished weight.)

*Wall thickness ±10%.



Item No.	Dia.Size	D	B	b ±0.1	d	R	r	t	W/kgs
HC 98015	1/2"	25.0	19.0	4	15	12.5	0.2	1.6	--
HC 98020	3/4"	32.5	24.4	6	20	15.5	0.3	1.6	--
HC 98025	1"	40.5	30.7	8	25	25	0.8	2	0.1
HC 98032	1-1/4"	51	38	9.6	32	25	0.9	2	0.15
HC 98040	1-1/2"	62.5	46.5	9.6	40	25	0.8	2	0.2
HC 98050	2"	80	60.5	10	50	37.5	1.0	3	0.3
HC 98065	2-1/2"	102	78	12	63	37.5	1.1	3.5	0.7
HC 98080	3"	125	94	12	78	37.5	1.3	4	1.2
HC 98100	4"	154	113	14	100	37.5	1.5	5	2
HC 98125	5"	195	149	20	123	50	1.3	5.5	3.5
HC 98150	6"	230	173	20	148	50	1.7	6	5.5
HC 98200	8"	300	222	20	198	62.5	1.8	8	13
HC 98250	10"	370	270	35	250	75	1.4	10	24

更改(Revisor)	日期(Date)	變更(Decription)	繪圖	審核	核准	單位	比例	材質	<div>ACE</div> <div>ACE HOLLOW-BALL VALVE CO.,LTD</div>			
C1-307-1	94/07/12	AA000001	Drawing	By	Check	By	Approve	By				
			tommy			mm	free	SUS304 SUS316	2005 07/12	Hollow BALL	AA000002	