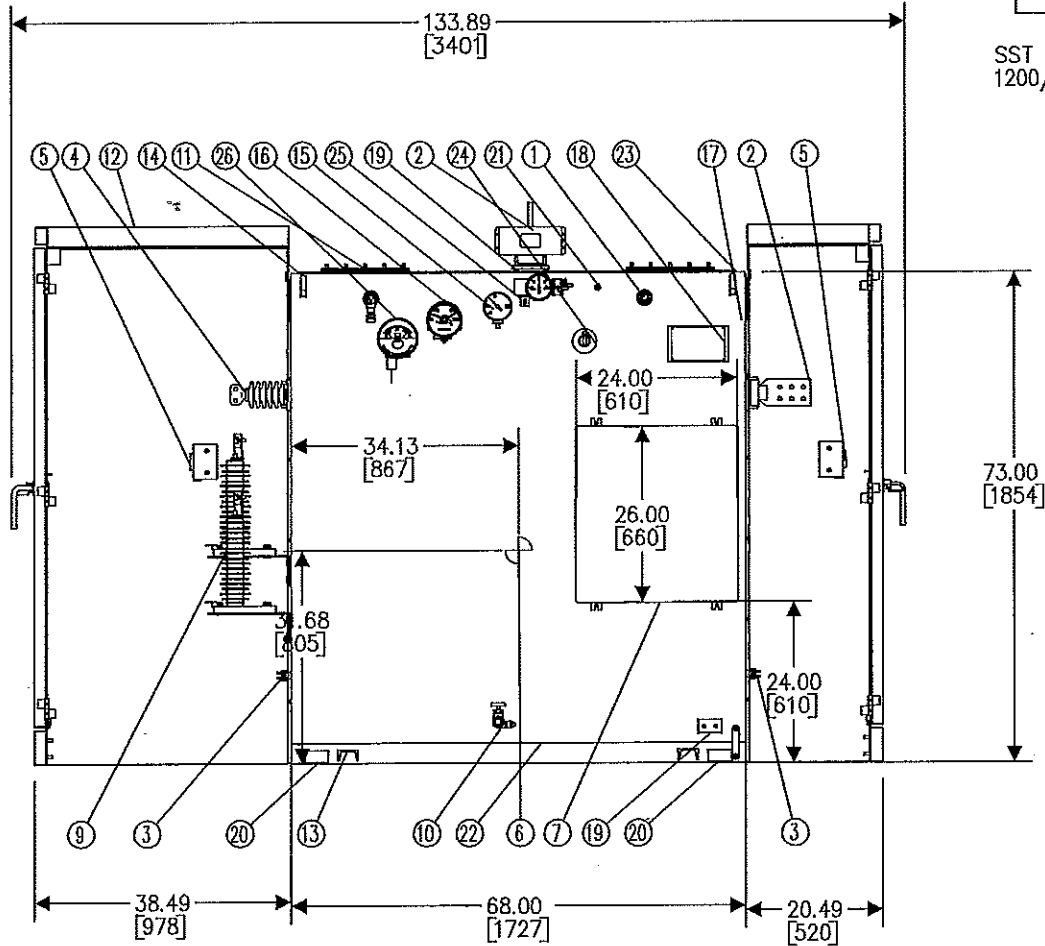
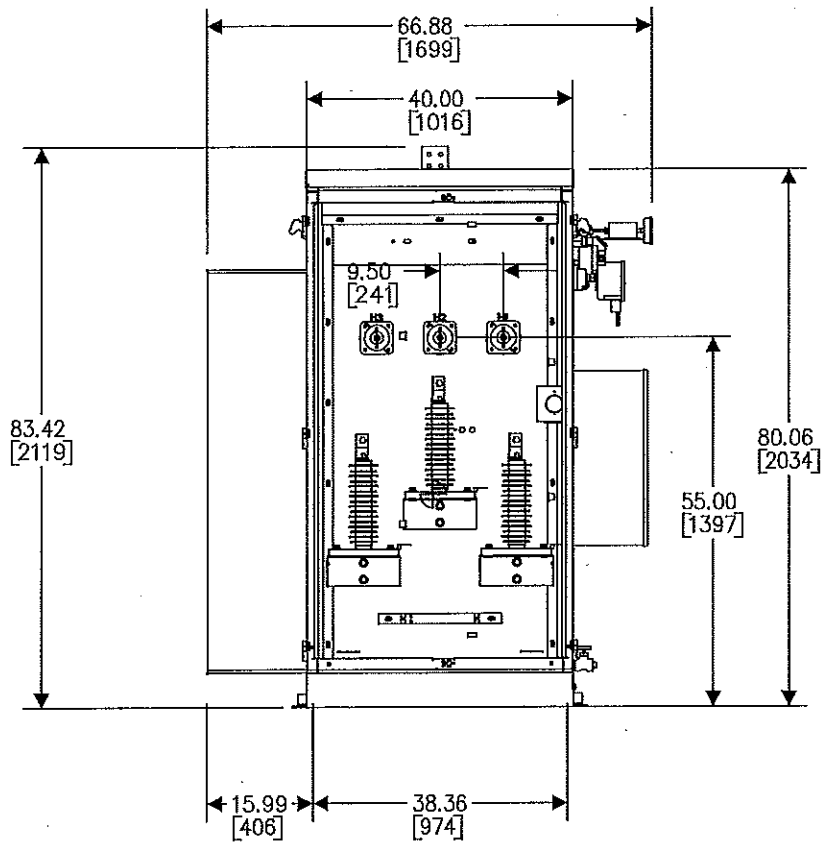
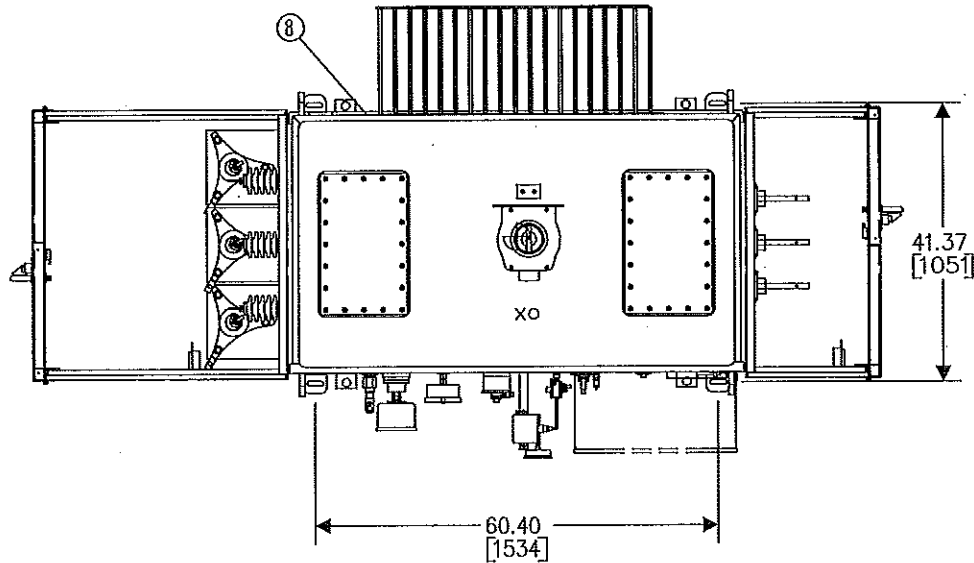
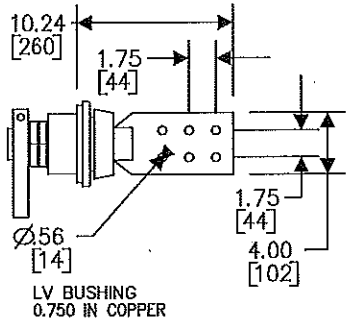
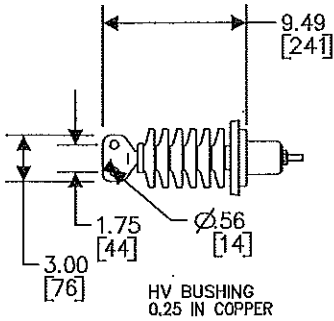
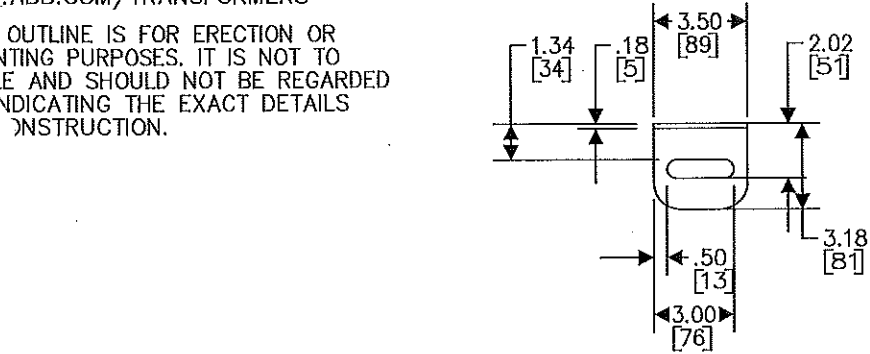
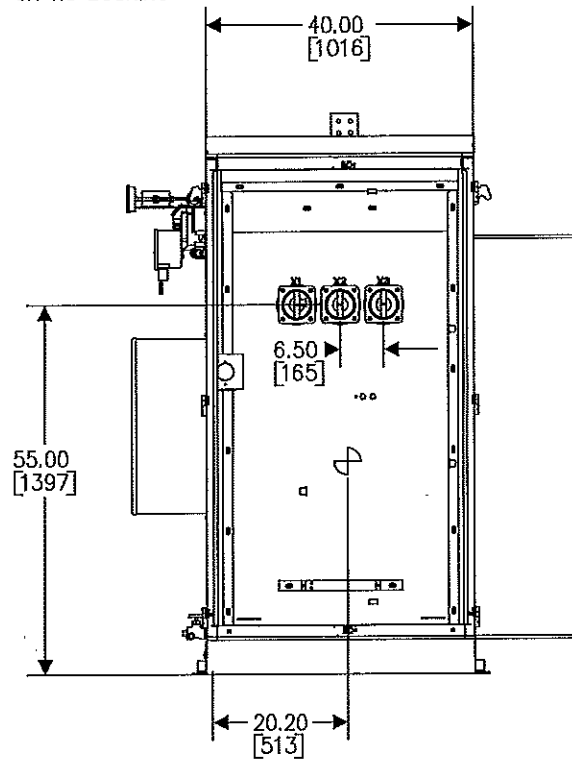


LIBROS DE INSTRUCCIÓN DE LA TRANSFERENCIA DIRECTA EN
WWW.ABB.COM/TRANSFORMERS

THIS OUTLINE IS FOR ERECTION OR
MOUNTING PURPOSES. IT IS NOT TO
SCALE AND SHOULD NOT BE REGARDED
INDICATING THE EXACT DETAILS
INSTRUCTION.



SST TANK BASE AND CABINETS
1200/5 C400 CT ON XO BUSHING



SHIP DETAIL	ITEM NUMBER	ITEM QTY	ITEM DESCRIPTION
	1	1	1.0 INCH FILL PLUG
	2	4	6-HOLE 4511A PORCELAIN
	3	2	240 V CABINET HEATER TO BE OPERATED AT 120V
	4	3	15KV 200A 2 HOLE SPADE PORCELAIN BUSHING
	5	2	CABINET THERMOSTAT
	6	1	CENTER OF GRAVITY
	7	1	CONTROL BOX
	8	1	COOLING FIN
	9	3	COOPER INTERMEDIATE CLASS ARR
	10	1	DRAIN VALVE W/ SAMPLER
	11	2	HANDHOLE COVER
	12	1	HIGH VOLTAGE CONNECTION (36 IN ATC)
	13	4	JACK PAD
	14	4	LIFTING HOOK
	15	1	LIQUID LEVEL GAUGE W/ CONTACTS
	16	1	LIQUID TEMPERATURE GAUGE W/ CONTACTS
	17	1	LOW VOLTAGE CONNECTION (18 IN ATC)
	18	1	NAMEPLATE
	19	3	NEMA DRILLED 2 HOLE GROUND PAD
	20	4	PALLET CLEAT
	21	1	PRESSURE RELIEF DEVICE
	22	1	TANK
	23	1	TANK TOP
	24	1	TAP CHANGER
	25	1	VACUUM PRESSURE GAUGE W/ BLEEDER AND CONTACTS
	26	1	WINDING TEMPERATURE GAUGE

ing Class:	ONAN	Avg. Winding Rise:	65°C	Approximate Weights		
VA:	1500	Ambient Temp:	30°C			
High Voltage:	13800	Frequency:	60 Hz	Pounds	Kilograms	
Low Voltage:	480Y / 277	Taps:	+/-2 AT 2.5%	Core & Coils:	4739	2149
HV BIL:	95	Fluid Type:	MINERAL OIL	Oil:	5128	2326
LV BIL:	30	Fluid Volume:	676 gal (2558 L)	Case:	3266	1481
HV Winding:	Copper	Paint:	ASA-61 GRAY 8.3G 6.1/0.54	Total:	13133	5957
LV Winding:	Copper	Tank Vacuum Pressure:	7.000 PSI			