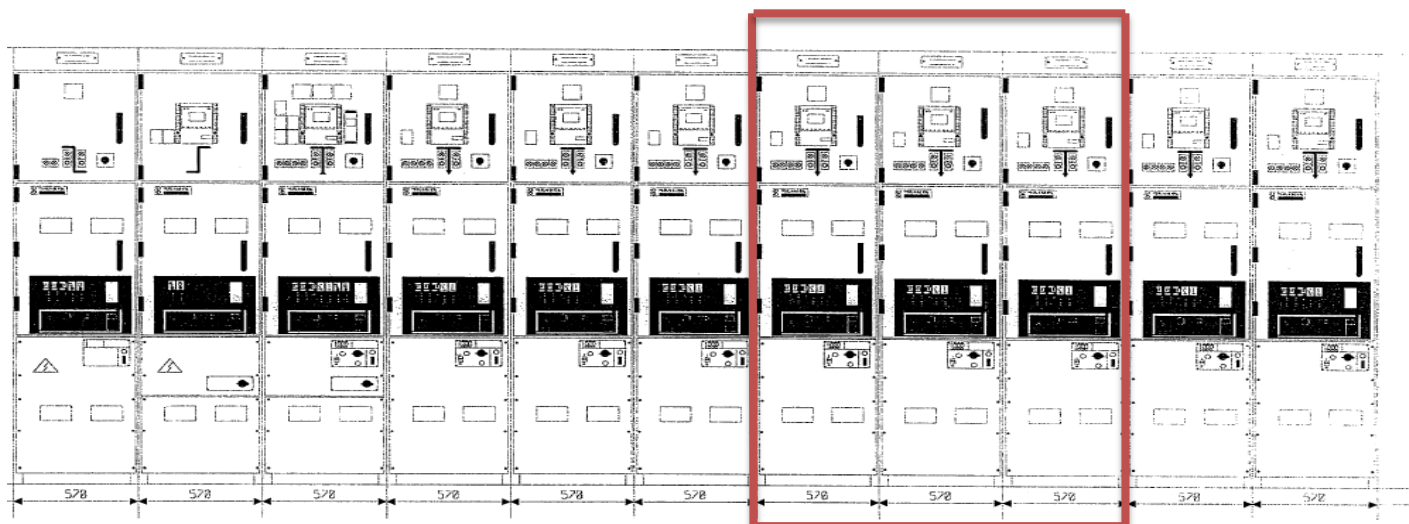
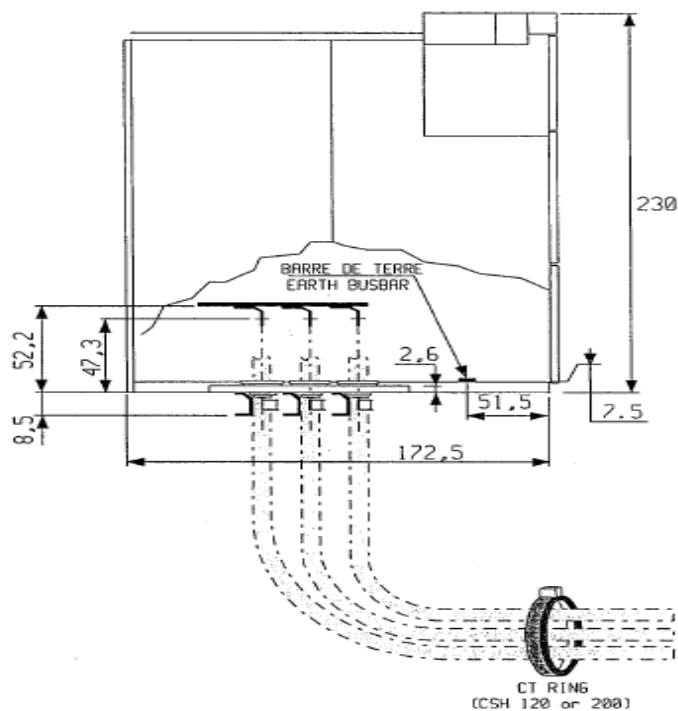
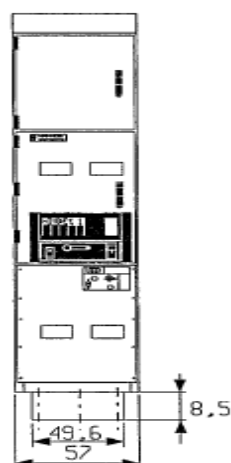


SINGLE LINE DIAGRAM OF THE FAULTY FEEDER AND TWO ADJACENT FEEDERS. ALL TRIPPED ON EARTH FAULT.

REST FEEDERS ON THE SAME BUS ARE COMPRESSORS 630KW, TRANSFORMER FEEDERS, FEW MORE WATER WELLS 63KW NONE OF THEM TRIPPED.



FEEDERS HAVING SAME CT RATIO 50/1 AND SAME EARTH FAULT SETTING WERE TRIPPED.



CT RING  
(CSH 120 or 200)

