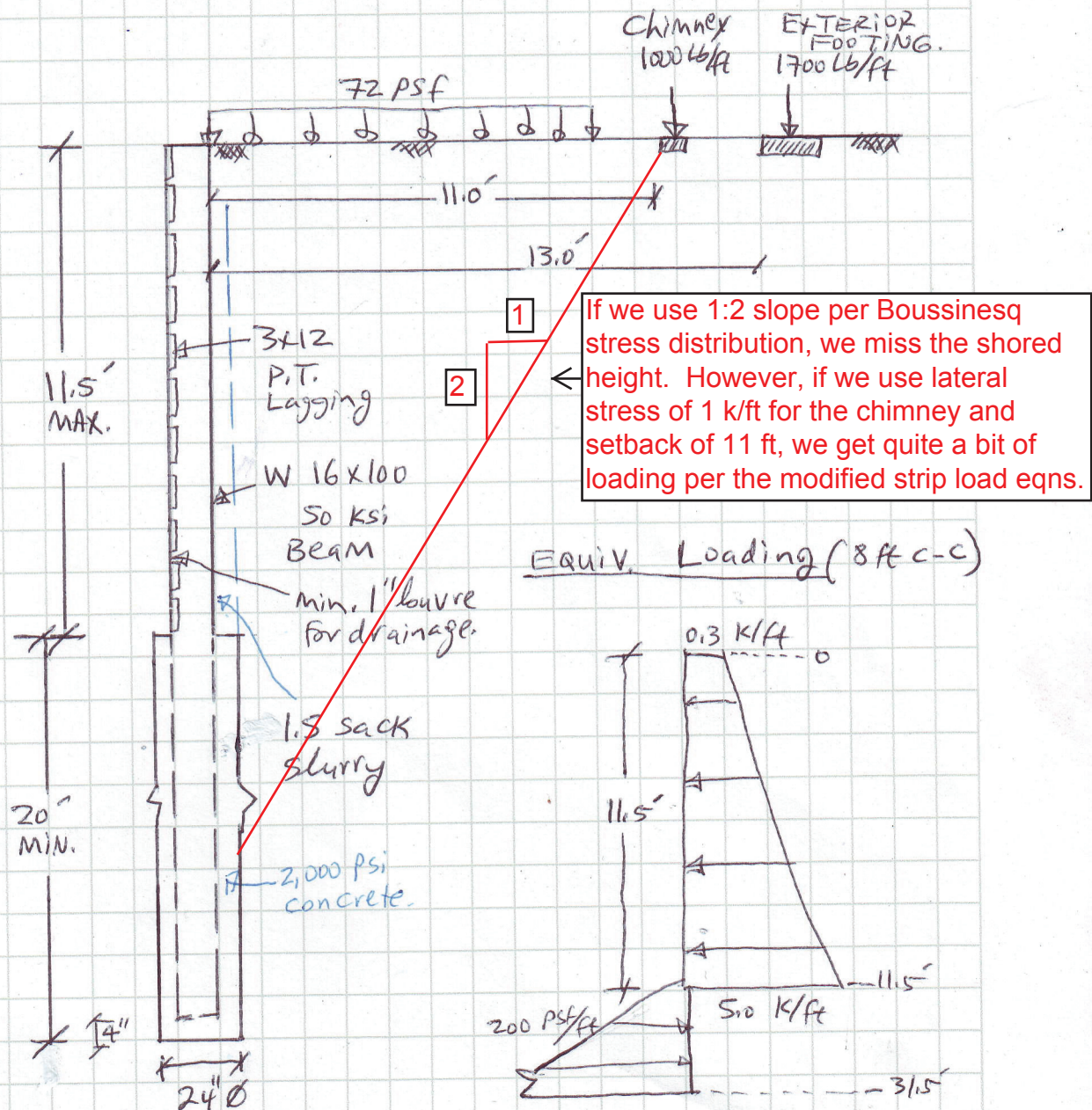


LOADING FOR CANTILEVER SHORING



REFERENCES: ① Soils report by this firm dated 6/23/11.

② AISC Manual, 13th edition. ③ 2010 CBC

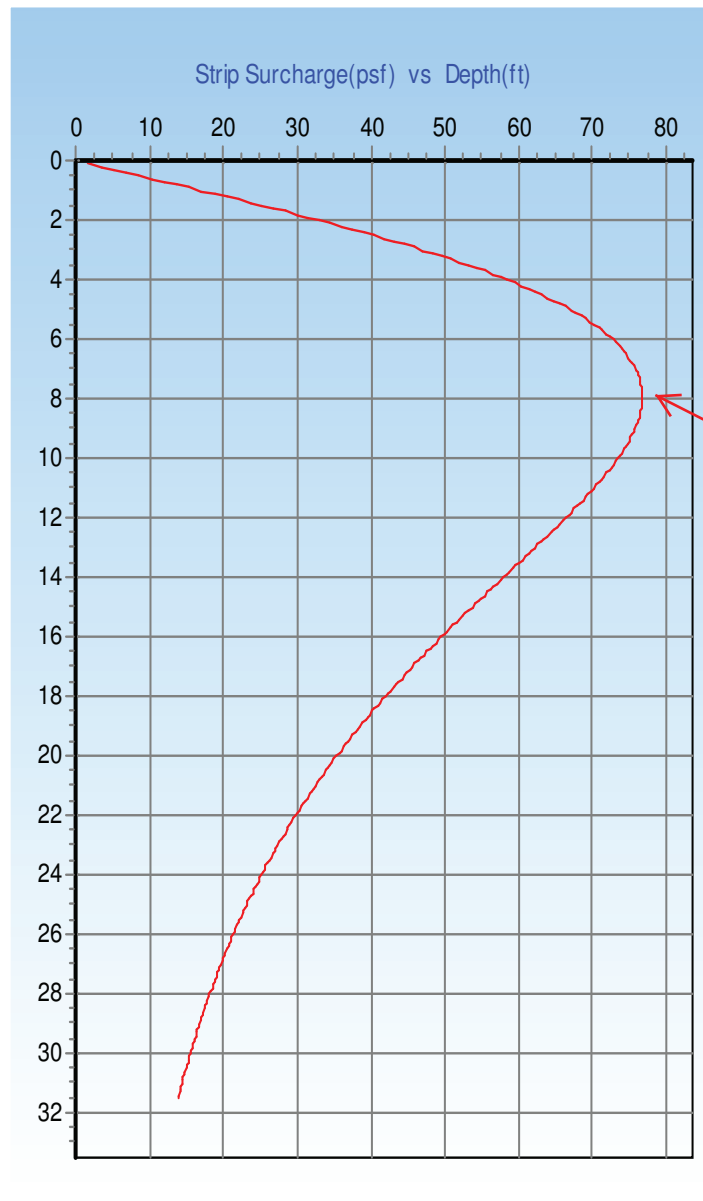
LATERAL STRESS ANALYSIS

Input Parameters for Job #

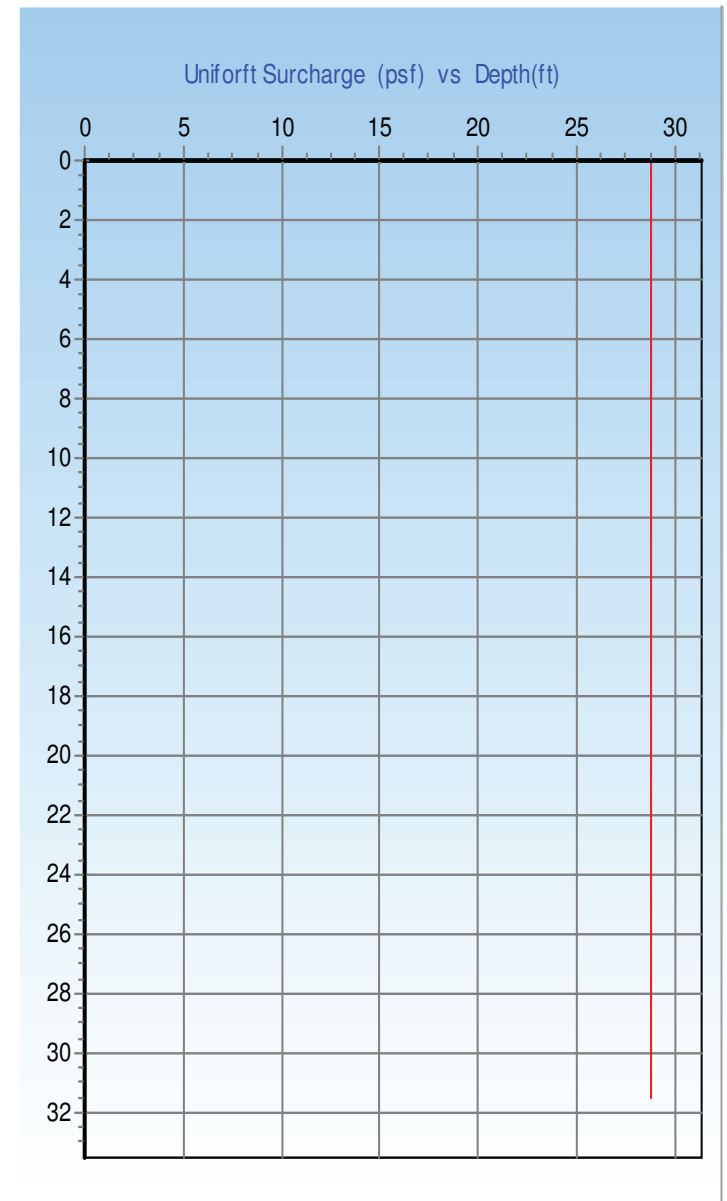
Date 3/15/2012

Soil wt. =	110	pcf
Retain. Ht =	11.5	ft
Enebdm. =	20	ft
Water Depth =	13	ft
Earth Press. Coeff =	0.4	Traingular
ht. incr. =	0.1	ft
Kh value =	0	g
Strip Load =	1700	psf
Strip Width =	1.5	ft
Setback =	13	ft
Line Load =	1000	lbf/ft
Dist to qL =	11	ft
Point Load =	0	lbf
Dist. to Q,"D" =	0	ft
Uniform Load =	72	psf

Elev (ft)	Strip Sur. (psf)	Uniform Sur. (psf)	Pore water (psf)	Static (psf)	Line Load (psf)	Point load (psf)	Seismic (psf)	Total Lateral (psf)
10.6	71.6	28.8	.0	466.4	30.0	.0	.0	596.8
10.7	71.2	28.8	.0	470.8	29.7	.0	.0	600.6
10.8	70.9	28.8	.0	475.2	29.5	.0	.0	604.4
10.9	70.5	28.8	.0	479.6	29.2	.0	.0	608.1
11.0	70.2	28.8	.0	484.0	28.9	.0	.0	611.9
11.1	69.8	28.8	.0	488.4	28.7	.0	.0	615.7
11.2	69.5	28.8	.0	492.8	28.4	.0	.0	619.5
11.3	69.1	28.8	.0	497.2	28.1	.0	.0	623.2
11.4	68.7	28.8	.0	501.6	27.9	.0	.0	627.0
11.5	68.3	28.8	.0	506.0	27.6	.0	.0	630.7
11.6	67.9	28.8	.0	510.4	27.4	.0	.0	634.5
11.7	67.5	28.8	.0	514.8	27.1	.0	.0	638.2
11.8	67.2	28.8	.0	519.2	26.8	.0	.0	642.0
11.9	66.8	28.8	.0	523.6	26.6	.0	.0	645.7
12.0	66.3	28.8	.0	528.0	26.3	.0	.0	649.5
12.1	65.9	28.8	.0	532.4	26.1	.0	.0	653.2
12.2	65.5	28.8	.0	536.8	25.8	.0	.0	656.9
12.3	65.1	28.8	.0	541.2	25.6	.0	.0	660.7
12.4	64.7	28.8	.0	545.6	25.3	.0	.0	664.4
12.5	64.3	28.8	.0	550.0	25.1	.0	.0	668.1
12.6	63.9	28.8	.0	554.4	24.8	.0	.0	671.9
12.7	63.5	28.8	.0	558.8	24.6	.0	.0	675.6
12.8	63.0	28.8	.0	563.2	24.3	.0	.0	679.3
12.9	62.6	28.8	.0	567.6	24.1	.0	.0	683.1
13.0	62.2	28.8	.0	572.0	23.8	.0	.0	686.8
13.1	61.8	28.8	6.2	576.4	23.6	.0	.0	696.8
13.2	61.3	28.8	12.5	580.8	23.3	.0	.0	706.7
13.3	60.9	28.8	18.7	585.2	23.1	.0	.0	716.7
13.4	60.5	28.8	25.0	589.6	22.9	.0	.0	726.7
13.5	60.0	28.8	31.2	594.0	22.6	.0	.0	736.7
13.6	59.6	28.8	37.4	598.4	22.4	.0	.0	746.6
13.7	59.2	28.8	43.7	602.8	22.1	.0	.0	756.6
13.8	58.8	28.8	49.9	607.2	21.9	.0	.0	766.6
13.9	58.3	28.8	56.2	611.6	21.7	.0	.0	776.6
14.0	57.9	28.8	62.4	616.0	21.5	.0	.0	786.6
14.1	57.5	28.8	68.6	620.4	21.2	.0	.0	796.6



Exterior Footing Load





Chimney load

