

# ALLSPAN DIMENSIONS AND PROPERTIES

Designation	V-Section Size of Chords		Nominal Depth in Inches	Resisting Moment Inch Kips	Maximum End Reaction Lb.	Transition Span Ft.	I of Chords In <sup>4</sup>	Approx. Wt. Per Linear Foot	Designation	V-Section Size of Chords		Nominal Depth in Inches	Resisting Moment Inch Kips	Maximum End Reaction Lb.	Transition Span Ft.	I of Chords In <sup>4</sup>	Approx. Wt. Per Linear Foot
	Top	Bot.								Top	Bot.						
B 81S	1	-	8	Varies	1,320	-	5.86	2.6	B187L	7	6	18	584.5	6,000	32.47	173.47	10.6
B 82S	2	-			1,650	-	9.95	3.0	B187H	7	6			8,100	24.05		10.9
B 83S	3	-			1,725	-	12.30	4.7	B188L	8	7		710.4	7,800	30.35	209.60	12.7
									B188H	8	7			10,000	23.68		13.1
B101	1	1	10	96.7	2,400	13.43	16.52	3.5	B204	4	3	20	381.9	6,200	20.53	125.73	6.2
B102L	2	1			2,400	16.32	18.55	3.9	B205	5	4			7,500	19.74		
B102H	2	1		117.6	3,600	10.88		4.1	B206	6	5		543.1	8,500	21.29	175.77	8.6
B103L	3	2			4,000	12.45	23.98	5.0	B207	7	6			10,500	20.66		
B103H	3	2		149.6	5,500	9.05		5.2	B208	8	7		791.1	10,600	24.87	259.81	12.2
B104L	4	3			3,400	18.17	29.81	6.0									
B104H	4	3			5,700	10.84		6.2									
B121	1	1	12	117.5	2,600	15.05	24.30	3.6	B224	4	3	22	421.3	6,200	22.64	152.88	6.3
B122L	2	1			2,600	18.30	27.24	4.1	B225	5	4			7,600	21.49		
B122H	2	1		142.8	4,000	11.89		4.3	B226	6	5		598.8	8,500	23.48	213.63	8.8
B123L	3	2			4,000	15.12	35.19	5.1	B227	7	6			11,000	21.74		
B123H	3	2		181.5	6,000	10.05		5.4	B228	8	7		871.8	13,000	22.35	315.42	12.5
B124L	4	3			4,000	18.72	43.67	6.1									
B124H	4	3			6,400	11.70		6.3	B244	4	3	24	460.6	6,500	23.61	182.71	6.5
B125L	5	4		224.7	5,000	17.43	50.86	7.2	B245	5	4			7,600	23.49		
B125H	5	4			7,600	11.46		7.5	B246	6	5		654.6	8,500	25.66	255.19	8.9
									B247	7	6			11,000	23.76		
									B248	8	7		952.5	13,000	24.42	376.42	12.7
B141	1	1	14	138.3	2,400	19.20	33.64	3.9									
B142L	2	1			2,400	23.32	37.70	4.2	B264	4	3	26	499.9	7,000	23.80	215.19	6.8
B142H	2	1		168.0	3,800	14.73		4.4	B265	5	4			7,700	25.17		
B143L	3	2			3,800	18.71	48.56	5.2	B266	6	5		710.3	8,500	27.85	300.43	9.0
B143H	3	2		213.3	5,800	12.26		5.6	B267	7	6			11,000	25.78		
B144L	4	3			3,800	23.15	60.19	6.2	B268	8	7		1,033.2	13,000	26.49	442.82	13.0
B144H	4	3		264.0	5,800	15.17		6.4									
B145L	5	4			6,000	17.06	70.09	7.3	B2410	10	9	24	1,151.3	10,000	38.37	413.73	14.0
B145H	5	4		307.2	7,700	13.29		7.6	B2411	11	10			11,000	39.21		
B146L	6	5			6,500	19.27	84.37	8.7	B2412	12	10		1,358.5	12,000	37.73	507.79	17.1
B146H	6	5		375.9	8,800	14.23		9.0	B2413	13	11			13,000	39.12		
									B2414	14	12		1,722.2	14,000	41.00	639.58	21.1
B161	1	1	16	159.0	2,200	24.09	44.50	4.0	B2415	15	13			15,000	42.82	716.91	23.4
B162L	2	1			3,500	18.39	50.65	4.5	B2416	16	14		2,126.1	16,000	44.29		
B162H	2	1		193.2	5,400	11.92		4.7									
B163L	3	2			3,400	24.04	64.08	5.4	B2810	10	9	28	1,360.0	11,000	41.21	576.74	14.4
B163H	3	2		245.2	5,400	15.13		5.7	B2811	11	10			12,000	42.44		
B164L	4	3			5,400	18.72	79.38	6.5	B2812	12	10		1,603.9	13,000	41.12	706.04	17.4
B164H	4	3		303.3	7,500	13.48		6.8	B2813	13	11			14,000	42.85		
B165L	5	4			5,400	21.78	92.42	7.4	B2814	14	12		2,031.5	15,000	45.14	887.90	21.3
B165H	5	4		352.9	7,800	15.08		7.7	B2815	15	13			16,000	47.33		
B166L	6	5			7,200	19.98	111.14	8.9	B2816	16	14		2,272.3	17,000	49.13	1105.10	25.9
B166H	6	5		431.6	8,800	16.35		9.3	B2817	17	15			18,000	51.90		
B167L	7	6			6,900	25.02	136.28	10.3				32	1,568.6	12,000	43.57	766.96	14.4
B167H	7	6		517.9	9,000	19.18		10.6	B3210	10	9			13,000	45.17		
									B3211	11	10		1,762.0	14,000	44.02	937.14	17.8
B182	2	1	18	218.4	3,000	24.26	63.64	4.6	B3212	12	10			15,000	46.09		
B183L	3	2			2,900	31.84	81.75	5.5	B3213	13	11		2,074.4	16,000	48.76	1177.14	21.5
B183H	3	2		277.1	4,800	19.24		5.8	B3214	14	12			17,000	51.32		
B184L	4	3			4,500	25.37	101.22	6.7	B3215	15	13		2,340.9	18,000	53.44	1463.56	26.0
B184H	4	3		342.6	6,800	16.79		7.0	B3216	16	14			19,000	56.60		
B185L	5	4			4,500	29.52	117.84	7.6	B3217	17	15		3,226.6	20,000	60.04	1856.27	32.5
B185H	5	4		398.6	6,800	19.53		7.9	B3218	18	16			21,200	63.86		
B186L	6	5			6,000	27.07	141.61	9.1	B3219	19	17		4,061.8				
B186H	6	5		487.4	8,100	20.05		9.5									

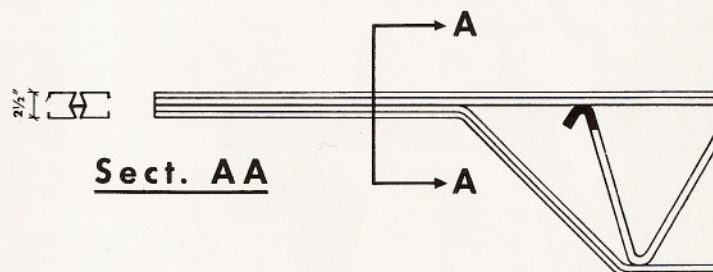


# ALLSPAN DIMENSIONS AND PROPERTIES

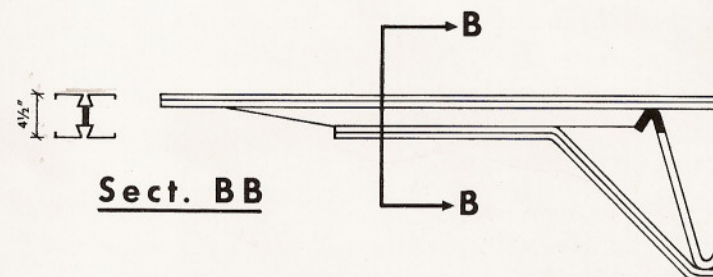
Designation	V-Section Size of Chords		Nominal Depth in Inches	Resisting Moment Inch Kips	Maximum End Reaction Lb.	Transition Span Ft.	I of Chords In <sup>4</sup>	Approx. Wt. Per Linear Foot
	Top	Bot.						
B3610	10	9	36	1,777.3	13,000	45.57	984.43	14.7
B3611	11	10		1,996.0	14,000	47.52	1135.53	16.7
B3612	12	10		2,094.5	16,000	43.63	1201.06	18.4
B3613	13	11		2,349.1	17,000	46.06	1347.66	19.9
B3614	14	12		2,650.2	17,500	50.48	1507.31	21.4
B3615	15	13		2,962.9	18,000	54.86	1687.10	23.6
B3616	16	14		3,266.1	19,000	57.29	1872.55	26.0
B3617	17	15		3,650.6	20,000	60.84	2105.97	28.8
B3618	18	16		4,074.5	21,000	64.67	2372.40	31.9
B3619	19	17		4,593.8	22,000	69.60	2600.20	34.7
B4210	10	9	42	2,090.3	15,000	46.45	1361.42	15.6
B4211	11	10		2,346.9	15,500	50.47	1568.47	17.1
B4212	12	10		2,462.5	16,000	51.30	1658.54	18.9
B4213	13	11		2,761.1	18,000	51.13	1860.01	20.4
B4214	14	12		3,114.2	18,500	56.11	2079.30	21.9
B4215	15	13		3,480.9	19,500	59.50	2326.37	23.9
B4216	16	14		3,836.1	20,500	62.37	2580.77	26.6
B4217	17	15		4,286.6	21,000	68.04	2901.03	29.4
B4218	18	16		4,782.5	22,500	70.85	3265.59	32.2
B4219	19	17		5,391.8	23,000	78.14	3579.45	34.7
B4810	10	9	48	2,403.3	15,000	53.40	1799.93	15.8
B4811	11	10		2,697.9	16,000	56.20	2071.37	17.7
B4812	12	10		2,830.5	17,000	55.50	2189.89	19.2
B4813	13	11		3,173.1	18,000	58.76	2454.90	20.9
B4814	14	12		3,578.2	19,000	62.77	2743.38	22.2
B4815	15	13	48	3,998.9	20,000	66.64	3068.40	24.3
B4816	16	14		4,406.1	21,000	69.93	3402.67	27.2
B4817	17	15		4,922.6	22,000	74.58	3823.50	29.7
B4818	18	16		5,490.5	23,000	79.57	4301.58	33.0
B4819	19	17		6,189.8	23,500	87.79	4714.12	35.6
B5410	10	9	54	2,716.3	16,000	56.58	2299.54	16.4
B5411	11	10		3,048.9	17,500	58.07	2644.26	18.0
B5412	12	10		3,198.5	18,000	59.23	2795.12	19.4
B5413	13	11		3,585.1	19,000	62.89	3132.54	21.1
B5414	14	12		4,042.2	19,500	69.09	3499.53	23.0
B5415	15	13		4,516.9	20,000	75.28	3913.21	25.1
B5416	16	14		4,976.0	21,000	78.98	4338.25	27.6
B5417	17	15		5,558.6	22,500	82.34	4873.38	29.4
B5418	18	16		6,198.5	23,300	88.67	5480.35	32.7
B5419	19	17		6,987.8	23,600	98.69	6005.72	35.2
B6010	10	9	60	3,029.3	17,000	59.39	2860.38	16.8
B6011	11	10		3,399.9	17,700	64.02	3287.13	18.3
B6012	12	10		3,566.5	18,500	64.26	3474.25	20.2
B6013	13	11		3,997.0	20,700	64.36	3892.73	20.9
B6014	14	12		4,506.2	21,500	69.86	4347.77	23.7
B6015	15	13		5,034.9	22,000	76.28	4860.79	25.8
B6016	16	14		5,546.0	22,500	82.16	5387.50	28.1
B6017	17	15		6,194.6	23,000	89.77	6050.67	30.0
B6018	18	16		6,906.5	23,500	97.96	6801.94	33.1
B6019	19	17		7,785.8	23,700	109.50	7453.74	37.1

## PROPERTIES OF ALLSPAN EXTENDED ENDS

Type	I <sub>xx</sub> (in <sup>4</sup> )	S <sub>xx</sub> (in <sup>3</sup> )	r <sub>xx</sub> (in)	r <sub>yy</sub> (in)
#1 Top & #1 Btm.	0.566	0.477	0.866	0.563
#2 Top & #1 Btm.	0.650	0.505	0.870	0.638
#3 Top & #2 Btm.	0.872	0.660	0.890	0.797
#4 Top & #3 Btm.	1.111	0.868	0.910	0.876
#5 Top & #4 Btm.	1.297	1.005	0.912	0.926



Type	I <sub>xx</sub> (in <sup>4</sup> )	S <sub>xx</sub> (in <sup>3</sup> )	r <sub>xx</sub> (in)	r <sub>yy</sub> (in)
#1 Top & #1 Btm.	2.580	1.178	1.510	0.460
#2 Top & #1 Btm.	2.905	1.241	1.536	0.533
#3 Top & #2 Btm.	3.784	1.588	1.604	0.690
#4 Top & #3 Btm.	4.720	2.030	1.660	0.774
#5 Top & #4 Btm.	5.485	2.350	1.685	0.833





# DESIGN TABLES

From 30' - 38'

Clear Span	Allspan Type	Wt. Per Foot	Total Safe Loads in pounds per square foot for spacing shown.					Clear Span	Allspan Type	Wt. Per Foot	Total Safe Loads in pounds per square foot for spacing shown.					Clear Span	Allspan Type	Wt. Per Foot	Total Safe Loads in pounds per square foot for spacing shown.				
			1'	4'	6'	7'	8'				1'	4'	6'	7'	8'				1'	4'	6'	7'	8'
30'	B161	4.0	117	29	19	16	14	32'	B245	7.6	348	87	58	49	43	35'	B247	10.6	425	106	70	60	53
	B162L	4.5	143	35	23	20	17		B246	8.9	425	106	70	60	53		B248	12.7	517	129	86	73	64
	B163L	5.4	181	45	30	25	22		B265	7.7	378	94	63	54	47		B2410	14.0	571	142	95	81	71
	B164L	6.5	224	56	37	32	28		B266	9.0	462	115	77	66	57		B264	6.8	271	67	45	38	33
	B165L	7.4	261	65	43	37	32		B267	10.8	553	138	92	79	69		B265	7.7	316	79	52	45	39
	B166L	8.9	319	79	53	45	39								B266	9.0	386	96	64	55	48		
	B167L	10.3	383	95	63	54	47	33'	B182	4.6	133	33	22	19	16	36'	B267	10.8	463	115	77	66	57
	B182	4.6	161	40	26	23	20		B183L	5.5	169	42	28	24	21		B182	4.6	112	28	18	16	14
	B183L	5.5	193	48	32	27	24		B184L	6.7	209	52	34	29	26		B183L	5.5	142	35	23	20	17
	B183H	5.8	205	51	34	29	25		B185L	7.6	243	60	40	34	30		B184L	6.7	176	44	29	25	22
	B184L	6.7	253	63	42	36	31		B186L	9.1	297	74	49	42	37		B185L	7.6	204	51	34	29	25
	B185L	7.6	294	73	49	42	36		B187L	10.6	357	89	59	51	44		B186L	9.1	250	62	41	35	31
	B186L	9.1	360	90	60	51	45		B188L	12.7	434	108	72	62	54		B187L	10.6	300	75	50	42	37
	B187L	10.6	400	100	66	57	50		B206	8.6	331	82	55	47	41		B206	8.6	278	69	46	39	34
	B187H	10.9	432	108	72	61	54		B207	10.3	397	99	66	56	49		B207	10.3	334	83	55	47	41
	B188L	12.7	519	129	86	74	64		B224	6.3	257	64	42	36	32		B224	6.3	216	54	36	30	27
	B205	7.4	328	82	54	46	41		B225	7.5	300	75	50	42	37		B225	7.5	252	63	42	36	31
	B206	8.6	401	100	66	57	50		B226	8.8	366	91	61	52	45		B226	8.8	307	76	51	43	38
B207	10.3	481	120	80	68	60	B227	10.5	439	109	73	62	54	B227	10.5	369	92	61	52	46			
B208	12.2	585	146	97	83	73	B246	8.9	400	100	66	57	50	B245	7.6	275	68	45	39	34			
B225	7.5	362	90	60	51	45	B247	10.6	479	119	79	68	59	B246	8.9	336	84	56	48	42			
B226	8.8	443	110	73	63	55	B264	6.8	305	76	50	43	38	B247	10.6	403	100	67	57	50			
B244	6.5	340	85	56	48	42	B265	7.7	355	88	59	50	44	B248	12.7	488	122	81	69	61			
B247	10.6	580	145	96	82	72	B266	9.0	434	108	72	62	54	B2410	14.0	555	138	92	79	69			
B2810	14.4	733	183	122	104	91	B267	10.8	520	130	86	74	65	B264	6.8	257	64	42	36	32			
31'	B161	4.0	110	27	18	15	13	34'	B182	4.6	125	31	20	17	15	37'	B265	7.7	299	74	49	42	37
	B162L	4.5	133	33	22	19	16		B183L	5.5	159	39	26	22	19		B266	9.0	365	91	60	52	45
	B163L	5.4	169	42	28	24	21		B184L	6.7	197	49	32	28	24		B267	10.8	438	109	73	62	54
	B164L	6.5	210	52	35	30	26		B185L	7.6	229	57	38	32	28								
	B165L	7.4	244	61	40	34	30		B186L	9.1	280	70	46	40	35		B206	8.6	264	66	44	37	33
	B166L	8.9	298	74	49	42	37		B187L	10.6	336	84	56	48	42		B207	10.3	316	79	52	45	39
	B167L	10.3	358	89	59	51	44		B188L	12.7	409	102	68	58	51		B208	12.2	384	96	64	54	48
	B182	4.6	151	37	25	21	18		B204	6.2	220	55	36	31	27		B225	7.5	238	59	39	34	29
	B183L	5.5	187	46	31	26	23		B205	7.4	256	64	42	36	32		B226	8.8	291	72	48	41	36
	B184L	6.7	237	59	39	33	29		B206	8.6	312	78	52	44	39		B227	10.5	349	87	58	49	43
	B185L	7.6	276	69	46	39	34		B207	10.3	374	93	62	53	46		B228	12.5	424	106	70	60	53
	B186L	9.1	337	84	56	48	42		B225	7.5	282	70	47	40	35		B244	6.5	224	56	37	32	28
	B187L	10.6	387	96	64	55	48		B226	8.8	345	86	57	49	43		B245	7.6	260	65	43	37	32
	B205	7.4	307	76	51	43	38	35'	B227	10.5	413	103	68	59	51	B246	8.9	318	79	53	45	39	
	B206	8.6	376	94	62	53	47		B228	12.5	502	125	83	71	62	B247	10.6	381	95	63	54	47	
	B207	10.3	450	112	75	64	56		B244	6.5	265	66	44	37	33	B2410	14.0	540	135	90	77	67	
	B225	7.5	339	84	56	48	42		B245	7.6	308	77	51	44	38	B2411	16.2	594	148	99	84	74	
	B226	8.8	415	103	69	59	51		B246	8.9	377	94	62	53	47	B2810	14.4	594	148	99	84	74	
B244	6.5	319	79	53	45	39	B247		10.6	451	112	75	64	56	B264	6.8	243	60	40	34	30		
B246	8.9	453	113	75	64	56	B248		12.7	548	137	91	78	68	B265	7.7	282	70	47	40	35		
B247	10.6	543	135	90	77	67	B264		6.8	288	72	48	41	36	B266	9.0	346	86	57	49	43		
B267	10.8	590	147	98	84	73	B265		7.7	335	83	55	47	41	B267	10.8	414	103	69	59	51		
							B266		9.0	410	102	68	58	51									
							B267		10.8	491	122	81	70	61	B206	8.6	250	62	41	35	31		
32'	B162L	4.5	125	31	20	17	15	35'	B182	4.6	118	29	19	16	14	38'	B207	10.3	300	75	50	42	37
	B163L	5.4	159	39	26	22	19		B183L	5.5	150	37	25	21	18		B208	12.2	364	91	60	52	45
	B164L	6.5	197	49	32	28	24		B184L	6.7	186	46	31	26	23		B225	7.5	226	56	37	32	28
	B165L	7.4	229	57	38	32	28		B185L	7.6	216	54	36	30	27		B226	8.8	276	69	46	39	34
	B166L	8.9	280	70	46	40	35		B186L	9.1	264	66	44	37	33		B227	10.5	330	82	55	47	41
	B182	4.6	141	35	23	20	17		B187L	10.6	317	79	52	45	39		B228	12.5	401	100	66	57	50
	B183L	5.5	180	45	30	25	22		B206	8.6	294	73	49	42	36		B244	6.5	212	53	35	30	26
	B184L	6.7	222	55	37	31	27		B207	10.3	353	88	58	50	44		B245	7.6	246	61	41	35	30
	B185L	7.6	258	64	43	36	32		B208	12.2	430	107	71	61	53		B246	8.9	301	75	50	43	37
	B186L	9.1	316	79	52	45	39		B225	7.5	266	66	44	38	33		B247	10.6	361	90	60	51	45
	B204	6.2	248	62	41	35	31		B226	8.8	325	81	54	46	40		B2410	14.0	526	131	87	75	65
	B205	7.4	288	72	48	41	36		B227	10.5	390	97	65	55	48		B2411	16.2	578	144	96	82	72
	B206	8.6	352	88	58	50	44		B244	6.5	250	62	41	35	31		B2810	14.4	578	144	96	82	72
	B207	10.3	423	105	70	60	52	B245	7.6	291	72	48	41	36	B264	6.8	230	57	38	32	28		
	B224	6.3	273	68	45	39	34	B246	8.9	355	88	59	50	44	B265	7.7	268	67	44	38	33		
	B226	8.8	389	97	64	55	42							B266	9.0	327	81	54	46	40			
	B227	10.5	466	116	77	66	58							B267	10.8	393	98	65	56	49			
	B244	6.5	299	74	49	42	37																