

MIN. "L" LENGTH = 6'-3"

MIN. "L" LENGTH = 6'-1"

MIN. "L" LENGTH = 6'-5"

MIN. "L" LENGTH = 6'-9"

MIN. "L" LENGTH = 7'-5"

MIN. "L" LENGTH = 7'-9"

JOIST
DEPTH

JOIST
DEPTH

| | | | | | |
|-----|--|-------------------------|---|--|-----|
| 8" | 25 $\frac{1}{2}$ " MIN. 37 $\frac{3}{8}$ " MAX. | NO. OF WEB PANELS @ 24" | | 25 $\frac{1}{2}$ " MIN. 37 $\frac{3}{8}$ " MAX. | 8 |
| 10" | 25 $\frac{1}{2}$ " MIN. 37 $\frac{3}{8}$ " MAX. | ✓ | ✓ | 25 $\frac{1}{2}$ " MIN. 37 $\frac{3}{8}$ " MAX. | 10" |
| 12" | 24 $\frac{1}{2}$ " MIN. 36 $\frac{3}{8}$ " MAX. | ✓ | ✓ | 24 $\frac{1}{2}$ " MIN. 36 $\frac{3}{8}$ " MAX. | 12" |
| 14" | 24 $\frac{1}{2}$ " MIN. 36 $\frac{3}{8}$ " MAX. | ✓ | ✓ | 24 $\frac{1}{2}$ " MIN. 36 $\frac{3}{8}$ " MAX. | 14" |
| 16" | 24 $\frac{1}{2}$ " MIN. 36 $\frac{3}{8}$ " MAX. | ✓ | ✓ | 24 $\frac{1}{2}$ " MIN. 36 $\frac{3}{8}$ " MAX. | 16" |
| 18" | 26 $\frac{1}{2}$ " MIN. 38 $\frac{3}{8}$ " MAX. | ✓ | ✓ | 26 $\frac{1}{2}$ " MIN. 38 $\frac{3}{8}$ " MAX. | 18" |
| 20" | 28 $\frac{1}{2}$ " MIN. 40 $\frac{3}{8}$ " MAX. | ✓ | ✓ | 28 $\frac{1}{2}$ " MIN. 40 $\frac{3}{8}$ " MAX. | 20" |
| 22" | 32 $\frac{1}{2}$ " MIN. 44 $\frac{3}{8}$ " MAX. | ✓ | ✓ | 32 $\frac{1}{2}$ " MIN. 44 $\frac{3}{8}$ " MAX. | 22" |
| 24" | 34 $\frac{1}{2}$ " MIN. 46 $\frac{3}{8}$ " MAX. | ✓ | ✓ | 34 $\frac{1}{2}$ " MIN. 46 $\frac{3}{8}$ " MAX. | 24" |



SHEFFIELD DIVISION
ARMCO STEEL CORPORATION
KANSAS CITY 25, MISSOURI

PRODUCT:

COLD FORMED JOISTS

DATE 9-12-63

REV.

DWG. NO.

BY BUTLER

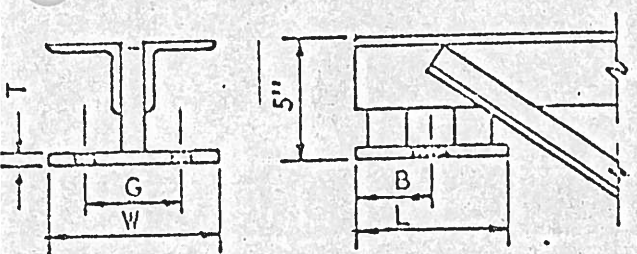
COLD FORMED JOIST MIN. LENGTHS AND
END PANEL MIN. & MAX. LENGTHS.

L AND LA SERIES JOIST BEARING DETAILS

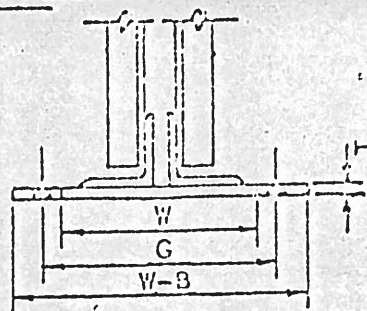
RECEIVED

JUN 13 1967

M. CLARK-ENGRG. CO.



TOP CHORD BEARING



BOTTOM CHORD BEARING

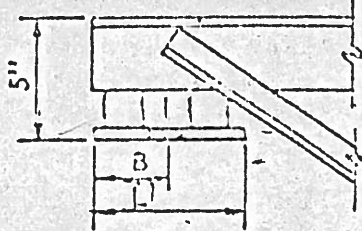
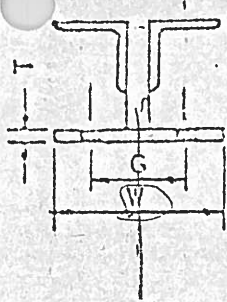
| CHORD TYPE | W IN. | L IN. | T IN. | G* IN. | W IN. | L IN. | T IN. | G IN. | W-B* IN. |
|------------|-------|-------|-------|--------|-------|-------|-------|--------|----------|
| 02 | 6 1/2 | 6 | 3/8 | 4 | 6 1/2 | 6 | 3/8 | 6 1/2 | 9 |
| 03 | 6 1/2 | 6 | 3/8 | 4 | 6 1/2 | 6 | 3/8 | 6 1/2 | 9 |
| 04 | 6 1/2 | 6 | 3/8 | 4 | 6 1/2 | 6 | 3/8 | 6 1/2 | 9 |
| 05 | 6 1/2 | 6 | 3/8 | 4 | 6 1/2 | 6 | 3/8 | 7 1/2 | 10 |
| 06 | 6 1/2 | 6 | 3/8 | 4 | 6 1/2 | 6 | 3/8 | 8 1/2 | 11 |
| 07 | 6 1/2 | 6 | 3/8 | 4 | 6 1/2 | 6 | 3/8 | 8 1/2 | 11 |
| 08 | 6 1/2 | 6 | 5/8 | 4 | 6 1/2 | 6 | 5/8 | 8 1/2 | 11 |
| 09 | 6 1/2 | 6 | 5/8 | 4 | 6 1/2 | 6 | 5/8 | 8 1/2 | 11 |
| 10 | 8 | 6 | 5/8 | 4 | 8 | 6 | 5/8 | 9 1/2 | 12 |
| 11 | 8 | 6 | 5/8 | 4 | 8 | 6 | 5/8 | 9 1/2 | 12 |
| 12 | 8 | 6 | 5/8 | 4 | 8 | 6 | 5/8 | 10 1/2 | 13 |
| 13 | 10 | 6 | 7/8 | 6 | 10 | 6 | 7/8 | 9 1/2 | 12 |
| 14 | 11 | 6 | 7/8 | 6 | 11 | 6 | 7/8 | 10 1/2 | 13 |
| 15 | 12 | 6 | 7/8 | 6 | 12 | 6 | 7/8 | 10 1/2 | 13 |
| 16 | 11 | 8 | 7/8 | 6 | 11 | 8 | 7/8 | 10 1/2 | 13 |
| 17 | 11 | 8 | 7/8 | 6 | 11 | 8 | 7/8 | 11 1/2 | 14 |
| 18 | 12 | 8 | 7/8 | 6 | 12 | 8 | 7/8 | 11 1/2 | 14 |
| 19 | 14 | 8 | 1 1/8 | 6 | 14 | 8 | 1 1/8 | 11 1/2 | 14 |

*THE DIMENSIONS NOTED TO BE USED ONLY WHEN HOLES ARE REQUIRED IN BEARING PLATES. ALL HOLES TO BE 13-16" x 1-1/2" SLOTTED HOLES.

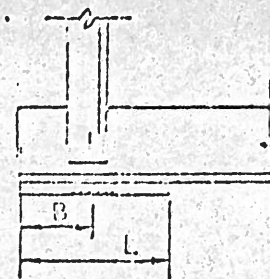
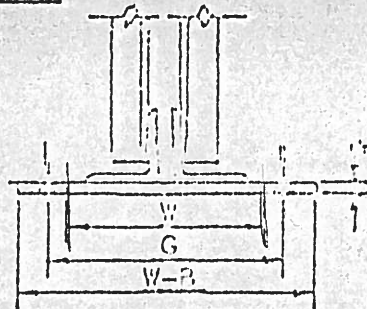
NOTE:

ALL TOP CHORD BEARING ENDS ARE 5" IN DEPTH
ADD BEARING PLATE THICKNESS (T) TO DEPTH OF BOTTOM CHORD BEARING JOISTS TO OBTAIN OVERALL DEPTH AT BEARING ENDS.

LH SERIES JOIST BEARING DETAILS



TOP CHORD BEARING



BOTTOM CHORD BEARING

| CHORD TYPE | W IN. | L IN. | T IN. | G* IN. | W IN. | L IN. | T IN. | G IN. | W-B* IN. |
|------------|-------|-------|-------|--------|-------|-------|-------|--------|----------|
| 02 | 5 1/2 | 6 | 3/8 | 4 | 6 1/2 | 6 | 3/8 | 6 1/2 | 9 |
| 03 | 6 1/2 | 6 | 3/8 | 4 | 6 1/2 | 6 | 3/8 | 6 1/2 | 9 |
| 04 | 6 1/2 | 6 | 3/8 | 4 | 6 1/2 | 6 | 3/8 | 6 1/2 | 9 |
| 05 | 6 1/2 | 6 | 5/8 | 4 | 6 1/2 | 6 | 5/8 | 7 1/2 | 10 |
| 06 | 8 | 6 | 5/8 | 4 | 8 | 6 | 5/8 | 7 1/2 | 10 |
| 07 | 8 | 6 | 5/8 | 4 | 8 | 6 | 5/8 | 8 1/2 | 11 |
| 08 | 8 | 6 | 5/8 | 4 | 8 | 6 | 5/8 | 8 1/2 | 11 |
| 09 | 10 | 6 | 7/8 | 6 | 10 | 6 | 5/8 | 8 1/2 | 11 |
| 10 | 10 | 6 | 7/8 | 6 | 10 | 6 | 5/8 | 8 1/2 | 11 |
| 11 | 11 | 6 | 7/8 | 6 | 11 | 6 | 5/8 | 8 1/2 | 11 |
| 12 | 12 | 6 | 7/8 | 6 | 12 | 6 | 5/8 | 9 1/2 | 12 |
| 13 | 11 | 8 | 7/8 | 6 | 11 | 8 | 5/8 | 9 1/2 | 12 |
| 14 | 11 | 8 | 7/8 | 6 | 11 | 8 | 5/8 | 9 1/2 | 12 |
| 15 | 12 | 8 | 7/8 | 6 | 12 | 8 | 5/8 | 10 1/2 | 13 |
| 16 | 14 | 8 | 1 1/8 | 6 | 14 | 8 | 7/8 | 11 1/2 | 14 |
| 17 | 15 | 8 | 1 1/8 | 6 | 15 | 8 | 7/8 | 12 1/2 | 15 |
| | | | | | | | | | |
| | | | | | | | | | |

*THE DIMENSIONS NOTED TO BE USED ONLY WHEN HOLES ARE REQUIRED IN BEARING PLATES. ALL HOLES TO BE 13-16" x 1-1/2" SLOTTED HOLES.

NOTE:

ALL TOP CHORD BEARING ENDS ARE 5" IN DEPTH
ADD BEARING PLATE THICKNESS (T) TO DEPTH OF BOTTOM CHORD BEARING JOISTS TO OBTAIN OVERALL DEPTH AT BEARING ENDS.