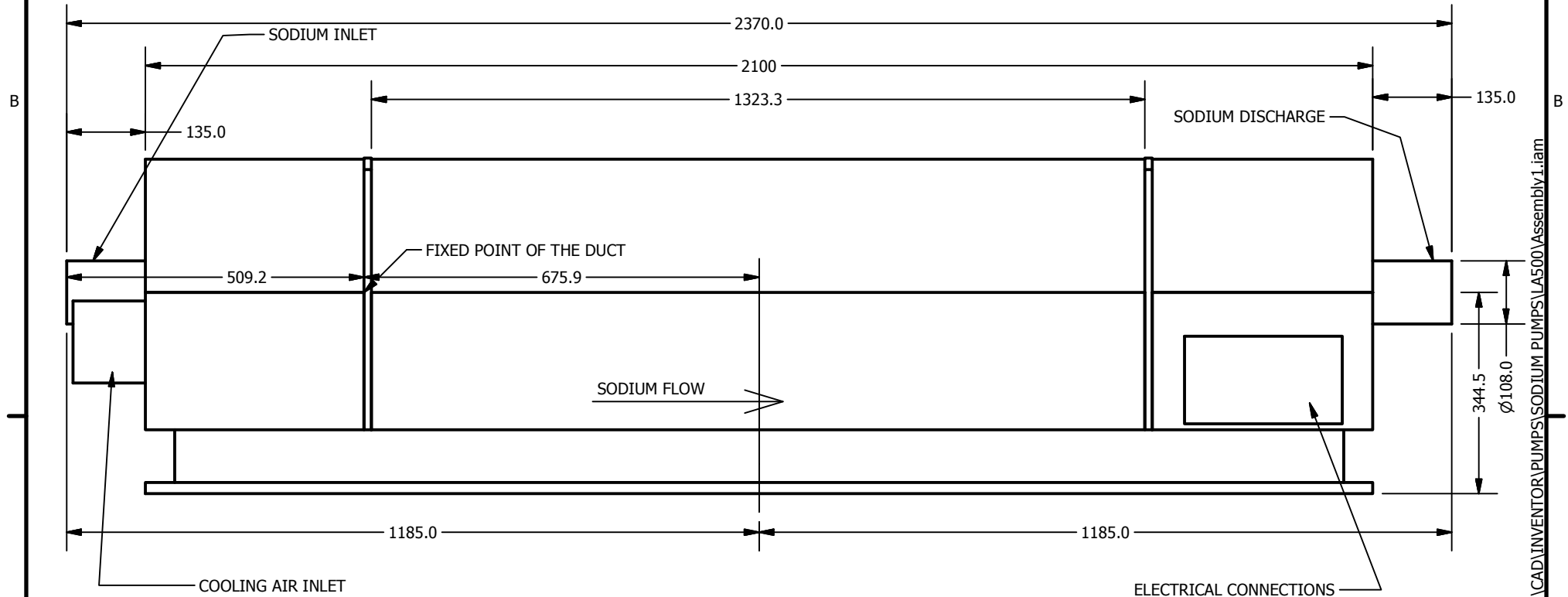


2

1

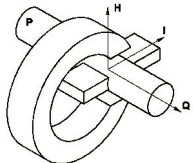
REVISION HISTORY				
REV	ECO	DESCRIPTION	DATE	BY
	N/A	N/A	N/A	N/A



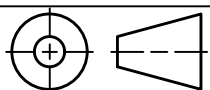
FRONT VIEW

A

A



cmi novacast inc.



UNLESS OTHERWISE SPECIFIED:

TOLERANCES (mm):

X.XX	=	±0.01
X.X	=	±0.1
X.	=	±0.2
<	=	±0.5°

WORKMANSHIP:

HOLES: // ±.1
 SURFACES: // ±.1
 DIMENSIONS ARE IN mm
 INTERPRET GD&T PER
 ASME Y14.5M-1994

MATERIAL

FINISH

TREATMENT

HARDNESS

INIT

DATE

DRAWN

3/25/2010

Lee

CHECKED

MFG

APPROVED

PROPRIETARY AND CONFIDENTIAL

THE INFORMATION CONTAINED IN THIS DRAWING IS THE SOLE PROPERTY OF **cmi novacast, inc.** ANY REPRODUCTION, WITHOUT THE EXPRESS WRITTEN PERMISSION OF **cmi novacast, inc.**, IS PROHIBITED.

TITLE

SIZE

DWG NR

SCALE

MASS
1257.872 kg

MAT'L VOLUME
153630888.5 mm³

SHEET
1 OF 8

LA 500 PUMP

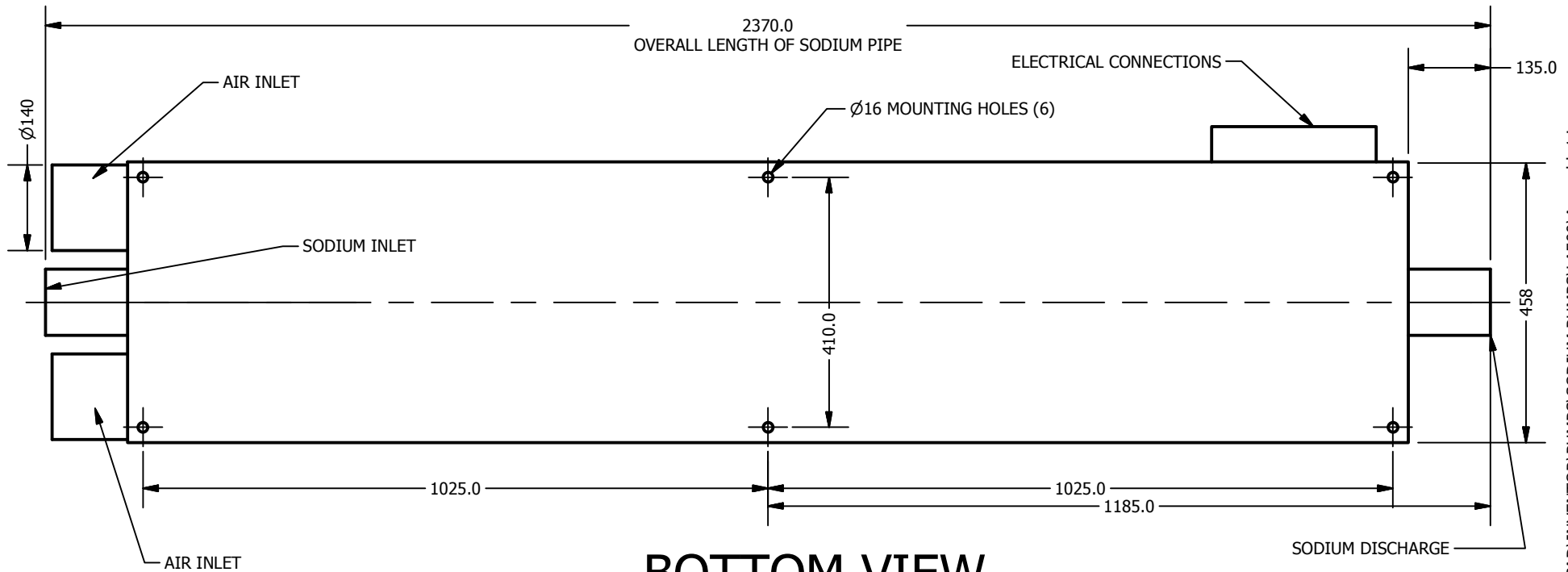
2

1

\\server1\data\CAD\INVENTOR\PUMPS\SODIUM PUMPS\LA500\Assembly1.iam

B

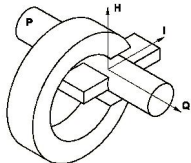
B



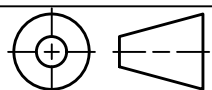
\\server1\data\CAD\INVENTOR\PUMPS\SODIUM PUMPS\LA500\Assembly1.iam

A

A



cmi novacast inc.

**UNLESS OTHERWISE SPECIFIED:****TOLERANCES (mm):**

X.XX	=	±0.01
X.X	=	±0.1
X.	=	±0.2
<	=	±0.5°

WORKMANSHIP:

HOLES: // ±.1
 SURFACES: // ±.1
 DIMENSIONS ARE IN mm
 INTERPRET GD&T PER
 ASME Y14.5M-1994

MATERIAL

FINISH

TREATMENT

HARDNESS

INIT

DATE

DRAWN

3/25/2010

Lee

CHECKED

MFG

APPROVED

PROPRIETARY AND CONFIDENTIAL

THE INFORMATION CONTAINED IN THIS DRAWING IS THE SOLE PROPERTY
 OF **cmi novacast, inc.** ANY REPRODUCTION, WITHOUT THE EXPRESS
 WRITTEN PERMISSION OF **cmi novacast, inc.**, IS PROHIBITED.

TITLE

SIZE

DWG NR

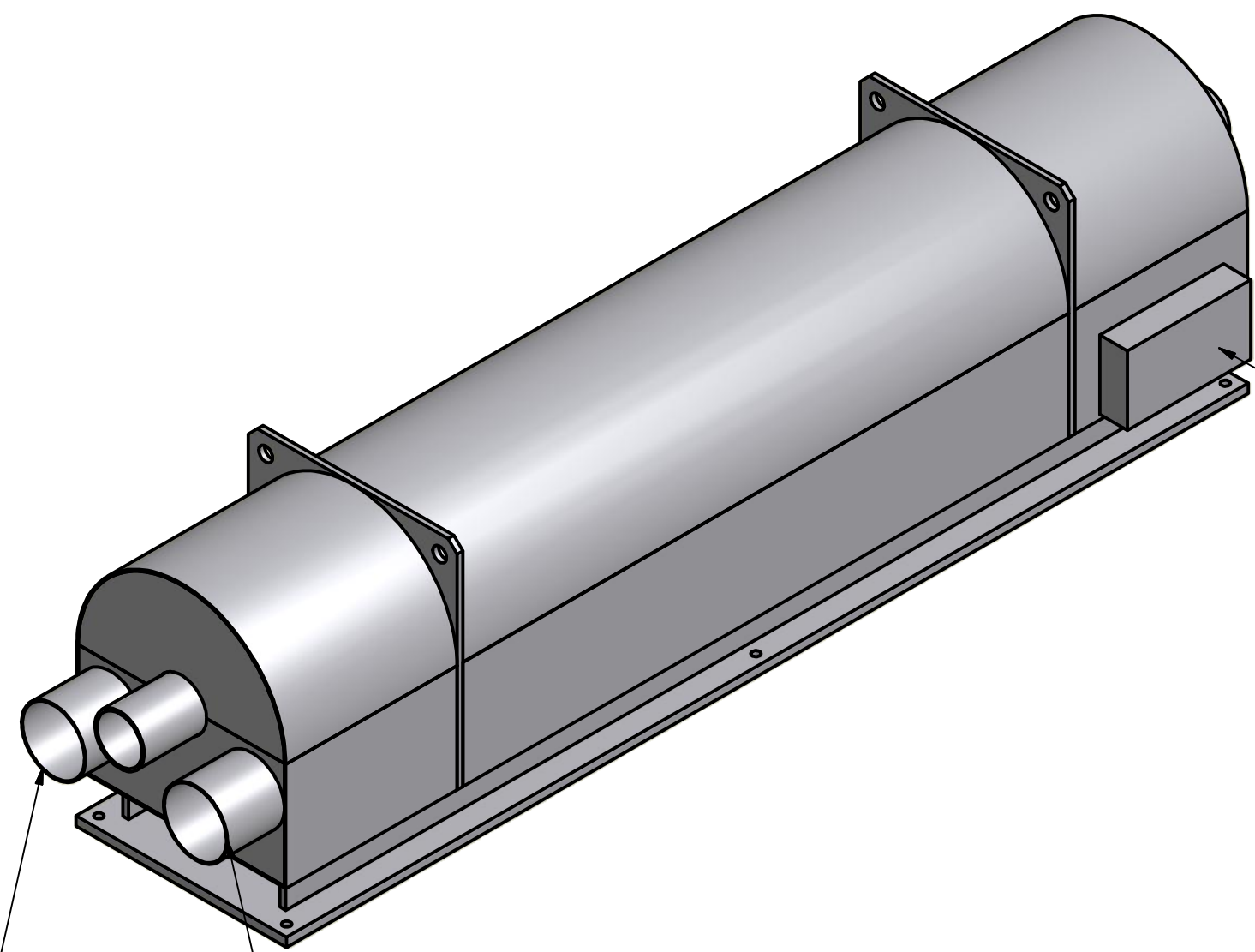
SCALE

MASS
1257.872 kg

MAT'L VOLUME
153630888.5 mm³

SHEET
2 OF 8

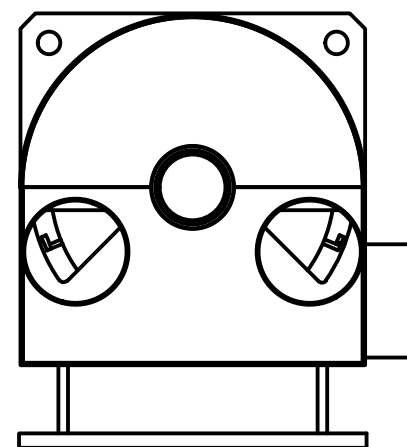
LA 500 PUMP



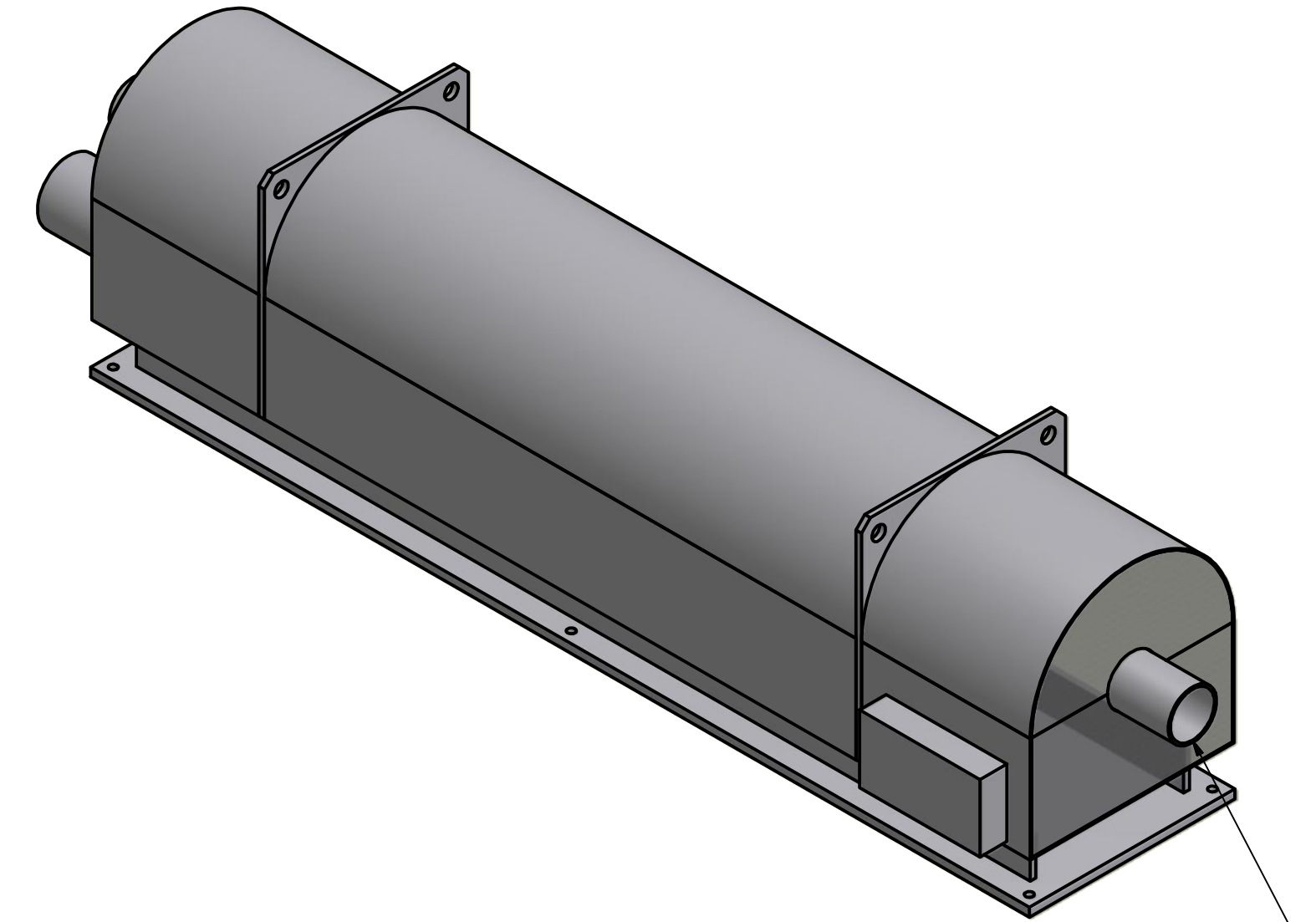
ELECTRICAL CONNECTIONS

COOLING AIR INLET

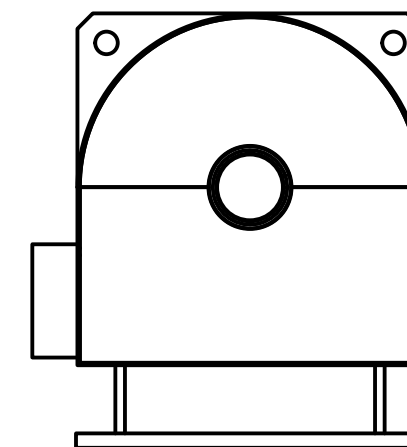
COOLING AIR INLET
(140mm O.D.)



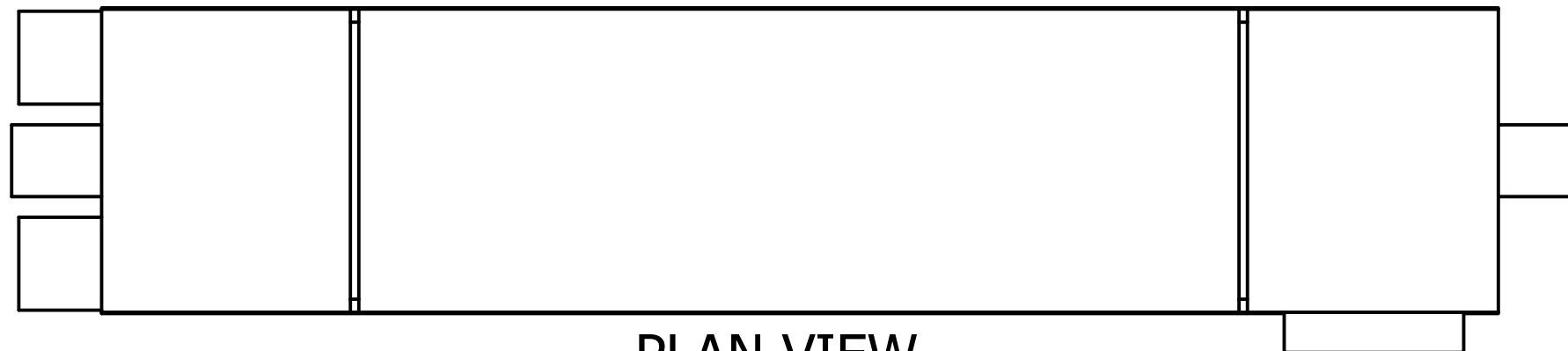
VIEW FROM
SODIUM INLET END



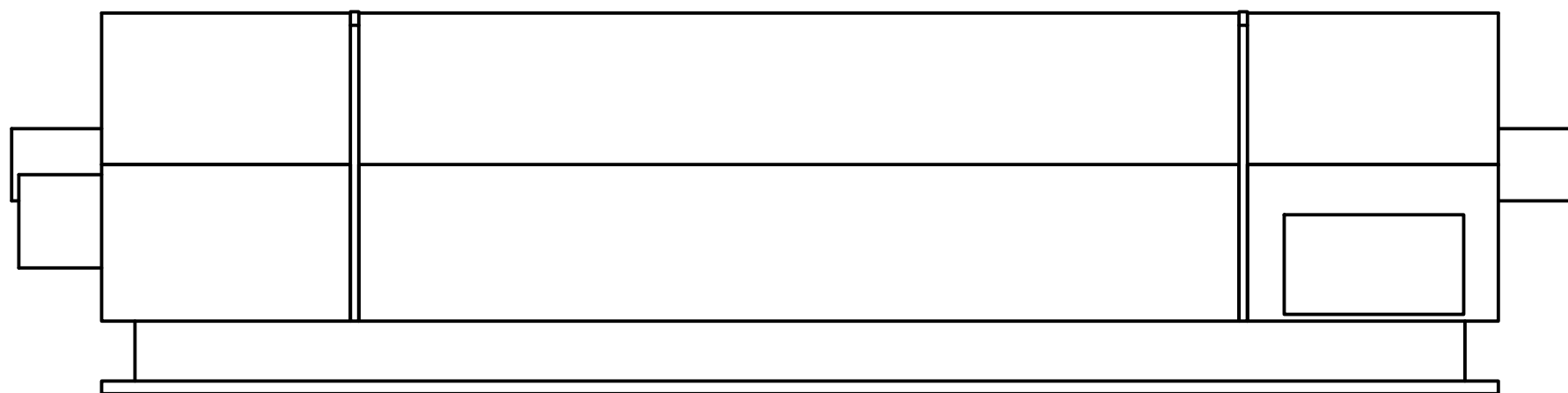
SODIUM DISCHARGE
(114.5mm O.D.)



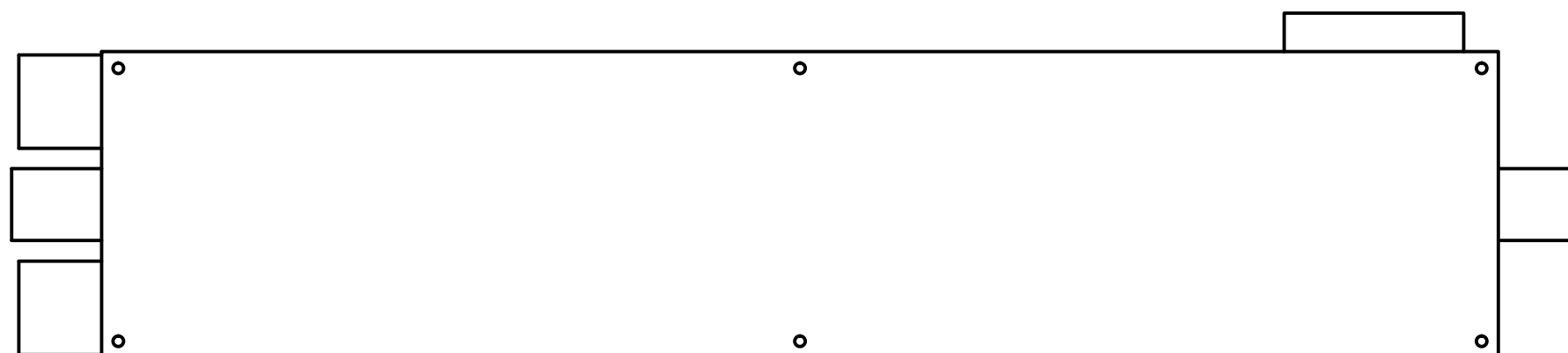
VIEW FROM SODIUM
DISCHARGE END



PLAN VIEW

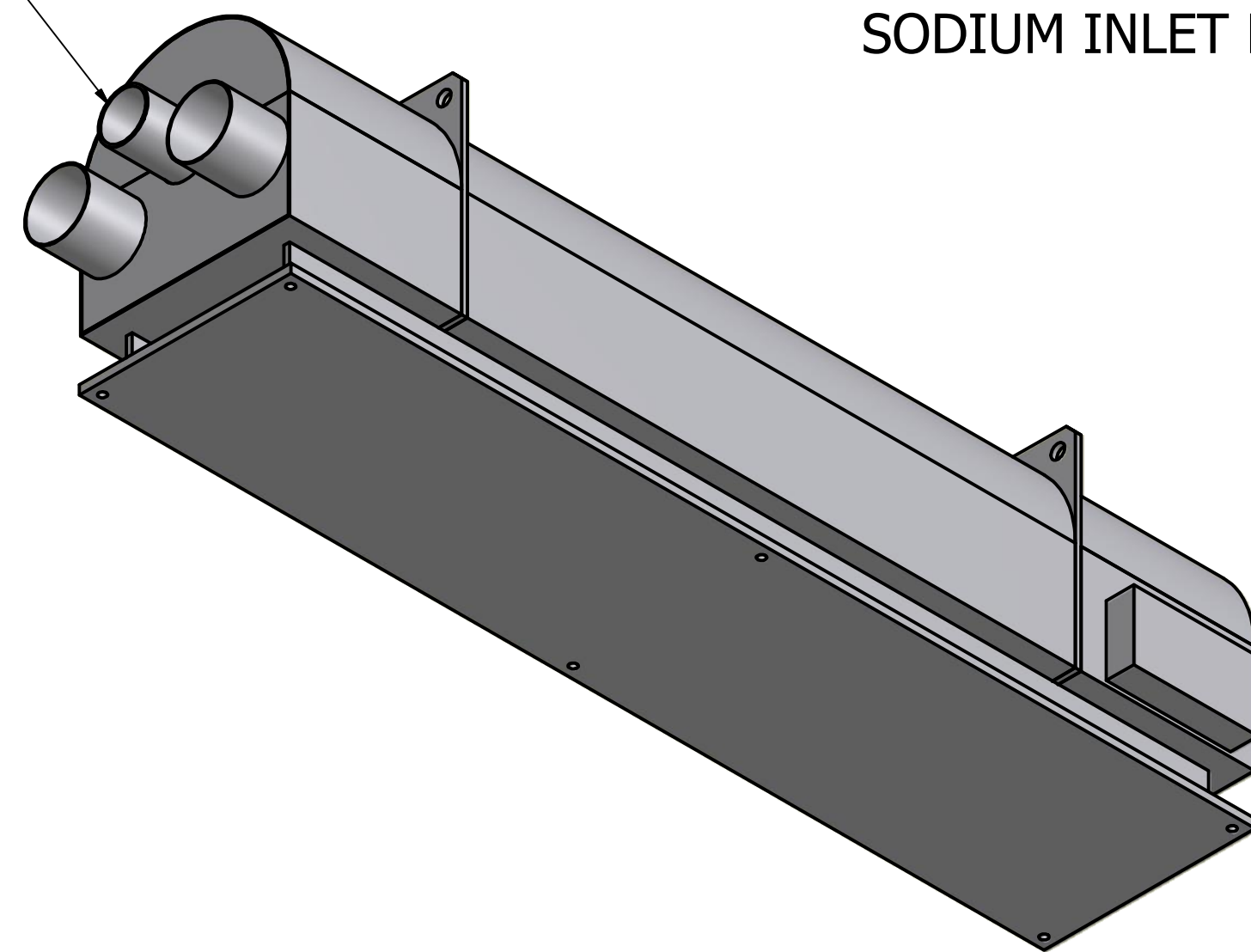



FRONT VIEW



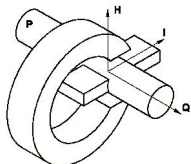
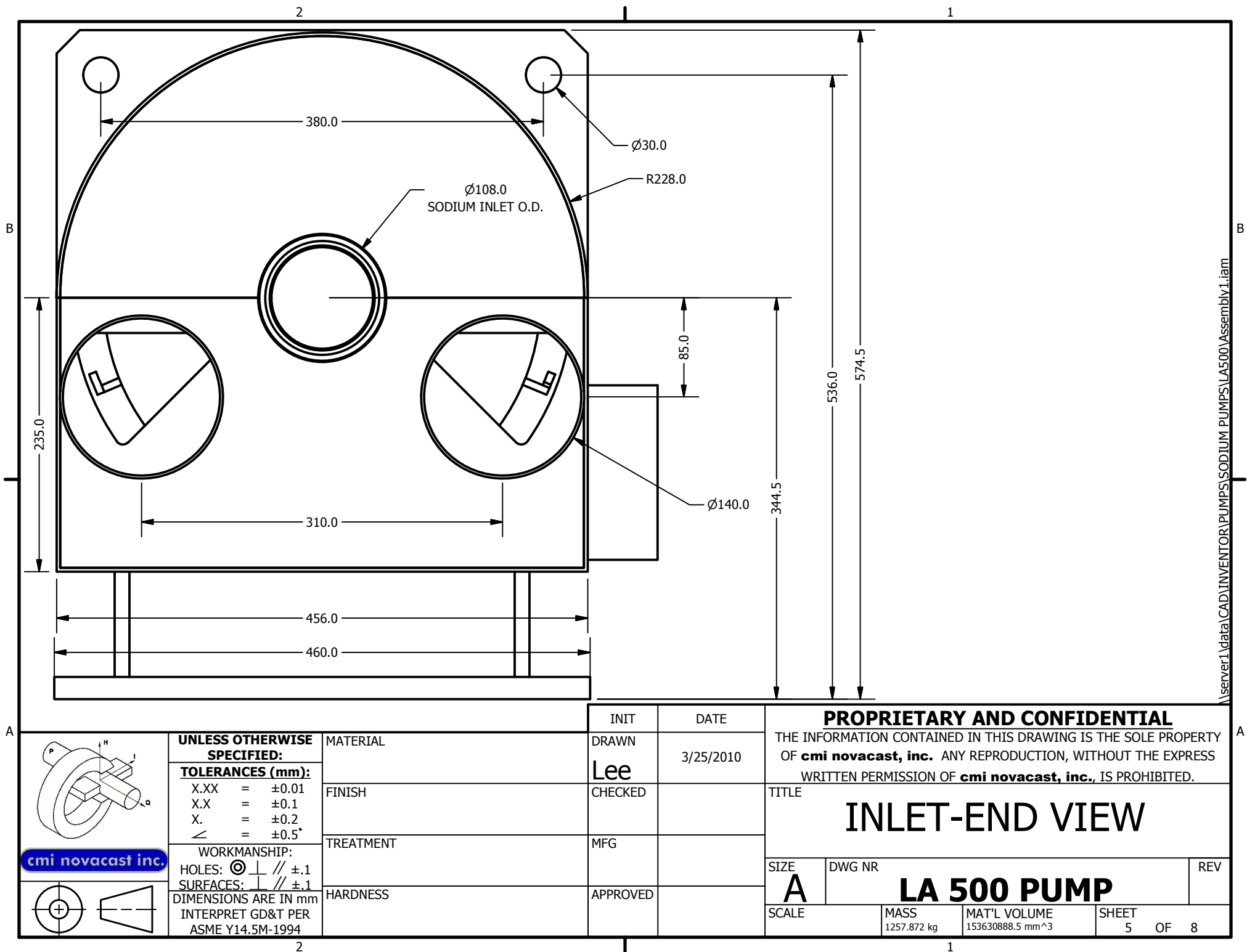
BOTTOM VIEW

SODIUM INLET

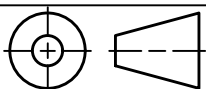


	UNLESS OTHERWISE SPECIFIED: TOLERANCES (mm): X.XX = ±0.01 X.X = ±0.1 X. = ±0.2 ∠ = ±0.5° WORKMANSHIP: HOLES: Ⓢ ±0.1 SURFACES: √ ±0.1 DIMENSIONS ARE IN mm INTERPRET G&T PER ASME Y14.5M-1994		MATERIAL	INIT	DATE	PROPRIETARY AND CONFIDENTIAL THE INFORMATION CONTAINED IN THIS DRAWING IS THE SOLE PROPERTY OF cmi novacast, inc. ANY REPRODUCTION, WITHOUT THE EXPRESS WRITTEN PERMISSION OF cmi novacast, inc. , IS PROHIBITED.		
			FINISH	DRAWN	3/25/2010	TITLE		
			TREATMENT	CHECKED		SIZE D DWG NR		
			HARDNESS	APPROVED		LA 500 PUMP		
MASS 1257.872 kg		MAT'L VOLUME 133639888.3 mm³		SHEET 4		OF 8		

\\server1\data\CAD\INVENTOR\PUMPS\SODIUM PUMPS\LA500\Assembly1.ipt



cmi novacast inc.



UNLESS OTHERWISE SPECIFIED:

TOLERANCES (mm):

X.XX = ± 0.01
X.X = ± 0.1
X. = ± 0.2
< = $\pm 0.5^\circ$

WORKMANSHIP:

HOLES: \varnothing ± 0.1

SURFACES: ± 0.1

DIMENSIONS ARE IN mm
INTERPRET GD&T PER
ASME Y14.5M-1994

MATERIAL

FINISH

TREATMENT

HARDNESS

INIT

DRAWN

Lee

CHECKED

MFG

APPROVED

DATE

3/25/2010

PROPRIETARY AND CONFIDENTIAL

THE INFORMATION CONTAINED IN THIS DRAWING IS THE SOLE PROPERTY OF **cmi novacast, inc.** ANY REPRODUCTION, WITHOUT THE EXPRESS WRITTEN PERMISSION OF **cmi novacast, inc.**, IS PROHIBITED.

TITLE

INLET-END VIEW

SIZE

A

DWG NR

LA 500 PUMP

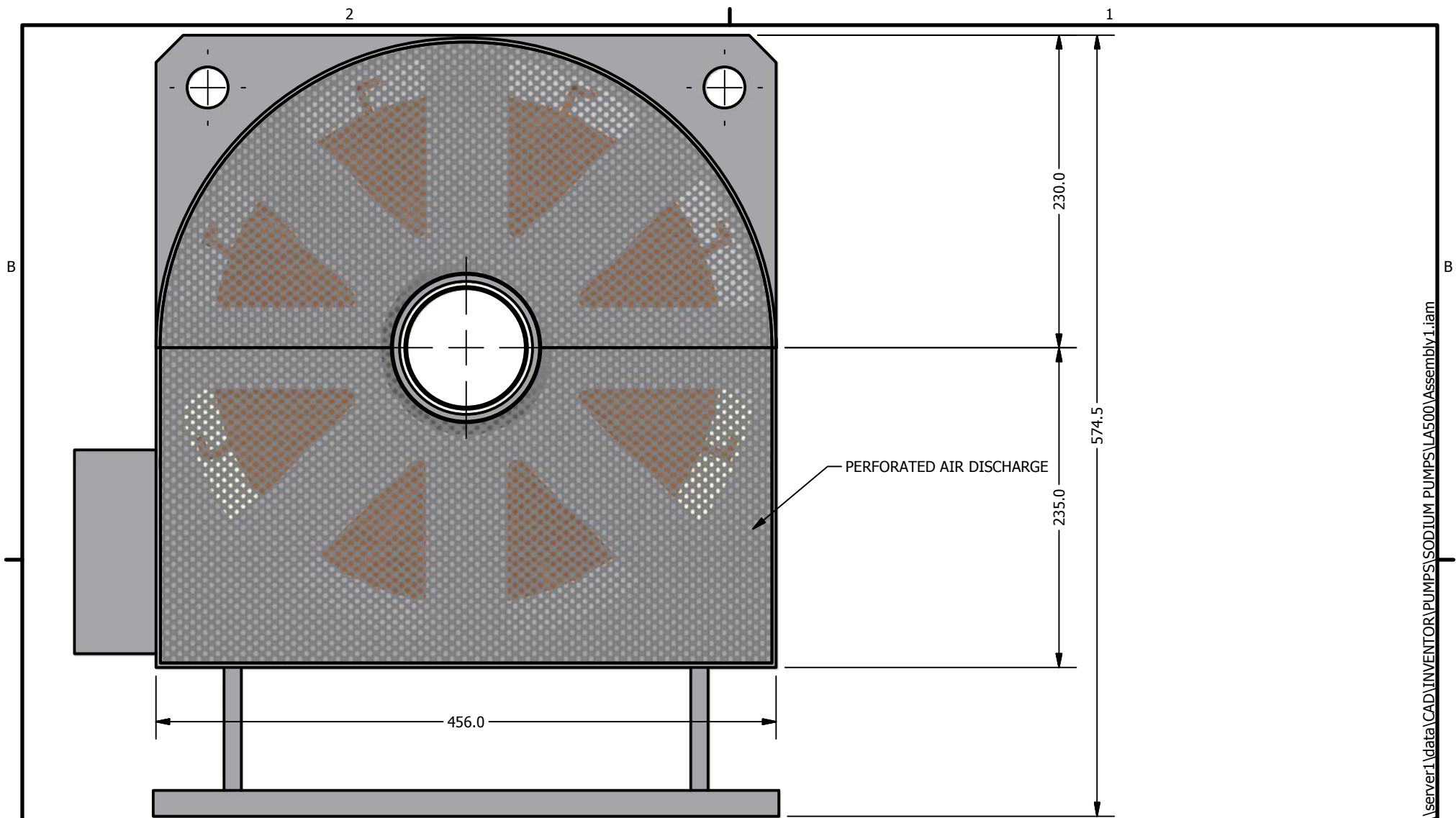
REV

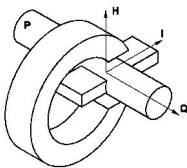

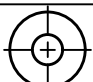
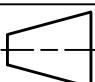


SCALE

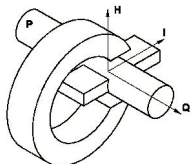
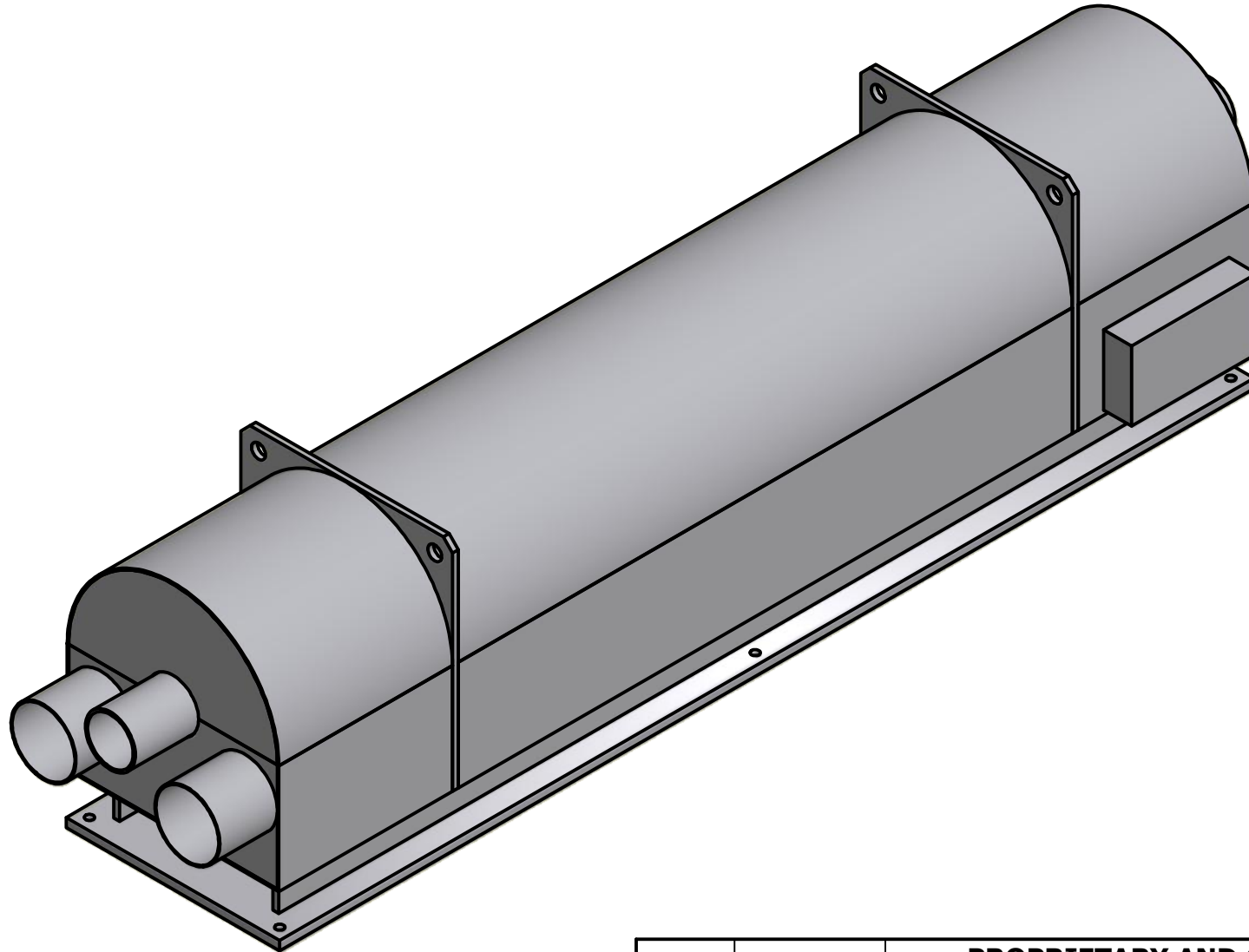
MASS
1257.872 kg

MAT'L VOLUME
153630888.5 mm³

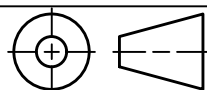
SHEET
5 OF 8



 		UNLESS OTHERWISE SPECIFIED:		MATERIAL		INIT		DATE		PROPRIETARY AND CONFIDENTIAL THE INFORMATION CONTAINED IN THIS DRAWING IS THE SOLE PROPERTY OF cmi novacast, inc. ANY REPRODUCTION, WITHOUT THE EXPRESS WRITTEN PERMISSION OF cmi novacast, inc. , IS PROHIBITED.							
		TOLERANCES (mm): X.XX = ±0.01 X.X = ±0.1 X. = ±0.2 < = ±0.5°		FINISH		CHECKED		3/25/2010									
 		WORKMANSHIP: HOLES:  // ±.1 SURFACES:  // ±.1		TREATMENT		MFG		DISCHARGE END VIEW		TITLE		LA 500 PUMP					
		DIMENSIONS ARE IN mm INTERPRET GD&T PER ASME Y14.5M-1994		HARDNESS		APPROVED				SIZE				DWG NR		REV	
										A							
										SCALE		MASS 1257.872 kg		MAT'L VOLUME 153630888.5 mm^3		SHEET 6 OF 8	



cmi novacast inc.



UNLESS OTHERWISE SPECIFIED:

TOLERANCES (mm):

X.XX = ± 0.01
 X.X = ± 0.1
 X. = ± 0.2
 < = $\pm 0.5^\circ$

WORKMANSHIP:

HOLES: \varnothing ± 0.1
 SURFACES: ± 0.1
 DIMENSIONS ARE IN mm
 INTERPRET GD&T PER
 ASME Y14.5M-1994

MATERIAL

FINISH

TREATMENT

HARDNESS

INIT

DATE

DRAWN

Lee

CHECKED

MFG

APPROVED

3/25/2010

PROPRIETARY AND CONFIDENTIAL

THE INFORMATION CONTAINED IN THIS DRAWING IS THE SOLE PROPERTY OF **cmi novacast, inc.** ANY REPRODUCTION, WITHOUT THE EXPRESS WRITTEN PERMISSION OF **cmi novacast, inc.**, IS PROHIBITED.

TITLE

SIZE

DWG NR

SCALE

MASS
1257.872 kg

MAT'L VOLUME
153630888.5 mm³

SHEET
7 OF 8

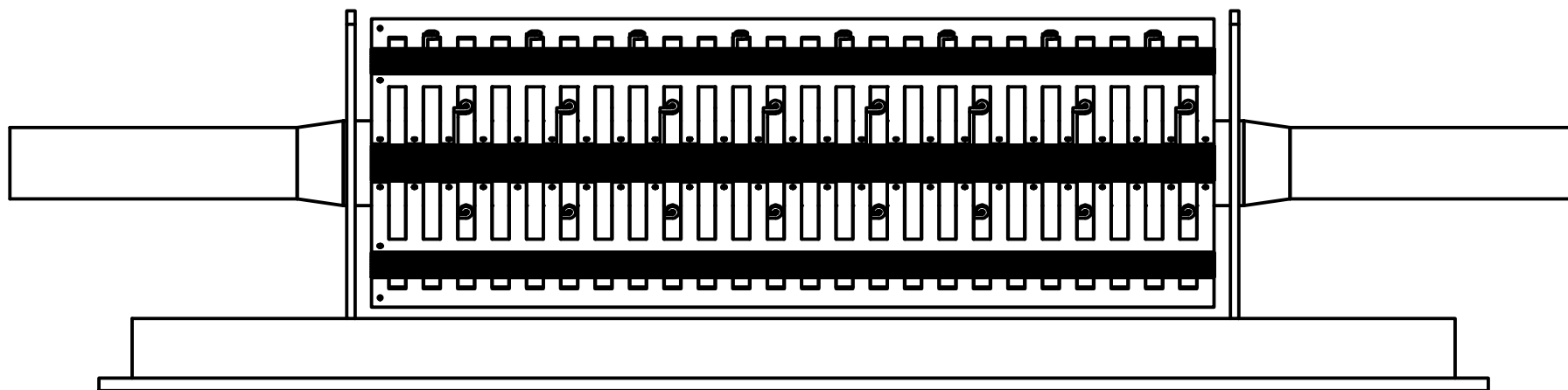
LA 500 PUMP

REV

\\server1\data\CAD\INVENTOR\PUMPS\SODIUM PUMPS\LA500\Assembly1.iam

B

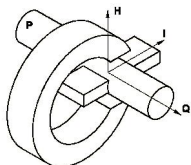
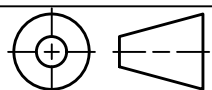
B



\\server1\data\CAD\INVENTOR\PUMPS\SODIUM PUMPS\LA500\Assembly1.iam

A

A


cmi novacast inc.

UNLESS OTHERWISE SPECIFIED:
TOLERANCES (mm):

 X.XX = ± 0.01

 X.X = ± 0.1

 X. = ± 0.2

 < = $\pm 0.5^\circ$
WORKMANSHIP:

 HOLES: \varnothing ± 0.1

 SURFACES: ± 0.1

 DIMENSIONS ARE IN mm
 INTERPRET GD&T PER
 ASME Y14.5M-1994

MATERIAL

FINISH

TREATMENT

HARDNESS

INIT

DRAWN

Lee

CHECKED

MFG

APPROVED

DATE

3/25/2010

PROPRIETARY AND CONFIDENTIAL

 THE INFORMATION CONTAINED IN THIS DRAWING IS THE SOLE PROPERTY
 OF **cmi novacast, inc.** ANY REPRODUCTION, WITHOUT THE EXPRESS
 WRITTEN PERMISSION OF **cmi novacast, inc.**, IS PROHIBITED.

**FRONT VIEW WITH COVERS
 REMOVED**

SIZE

DWG NR

SCALE

 MASS
 1257.872 kg

 MAT'L VOLUME
 153630888.5 mm³

 SHEET
 8 OF 8

LA 500 PUMP

REV