

Beam1.wbg  
Critical Results

WoodWorks® Sizer 8.31

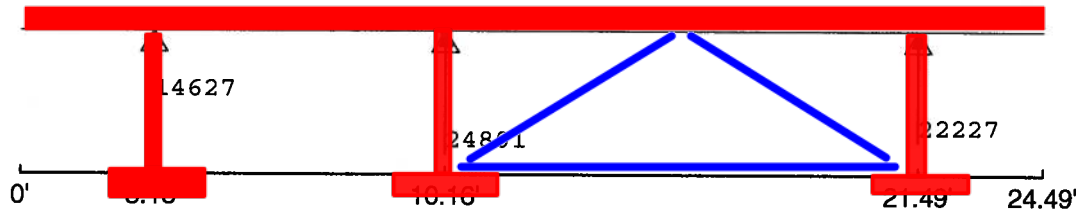
Aug. 27, 2014 10:48:50

ANALYSIS DIAGRAMS (known section - includes self-weight)

REACTION [lbs]

Maximum...

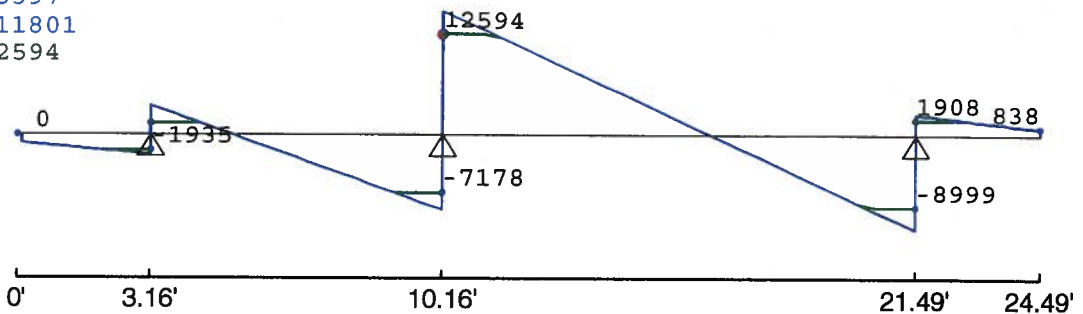
Uplift: 0  
Bearing: 24801



SHEAR [lbs]

Load Combination #9: 1.25D + 1.5L (pattern: \_LL\_)

+Vf max: 15397  
-Vf max: -11801  
Vf design: 12594



BENDING [lbs-ft]

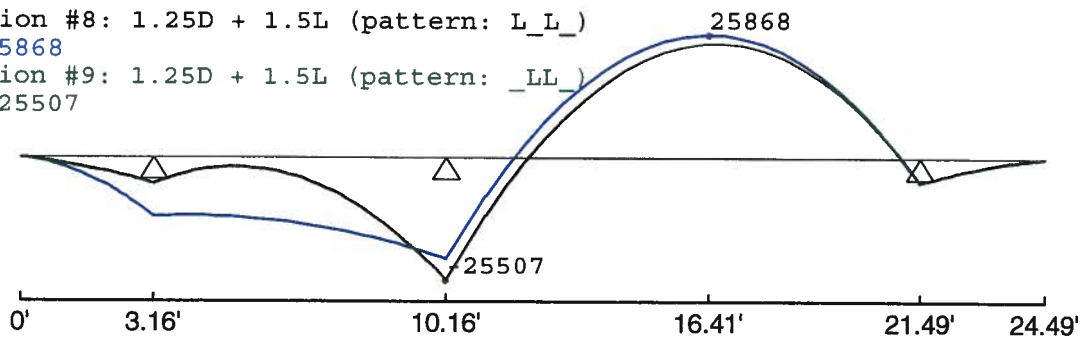
Factored loads

Load Combination #8: 1.25D + 1.5L (pattern: L\_L\_)

+Mf max: 25868

Load Combination #9: 1.25D + 1.5L (pattern: \_LL\_)

-Mf max: -25507



TOTAL DEFLECTION [in]

Load Combination #8: 1.0D + 1.0L (pattern: L\_L\_)

Critical Live: -0.31

Critical Total: -0.32

Critical Perm: 0.08

