

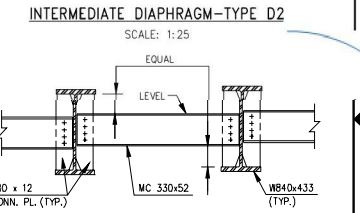
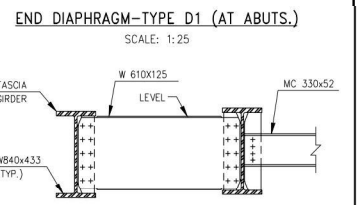
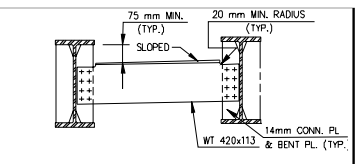
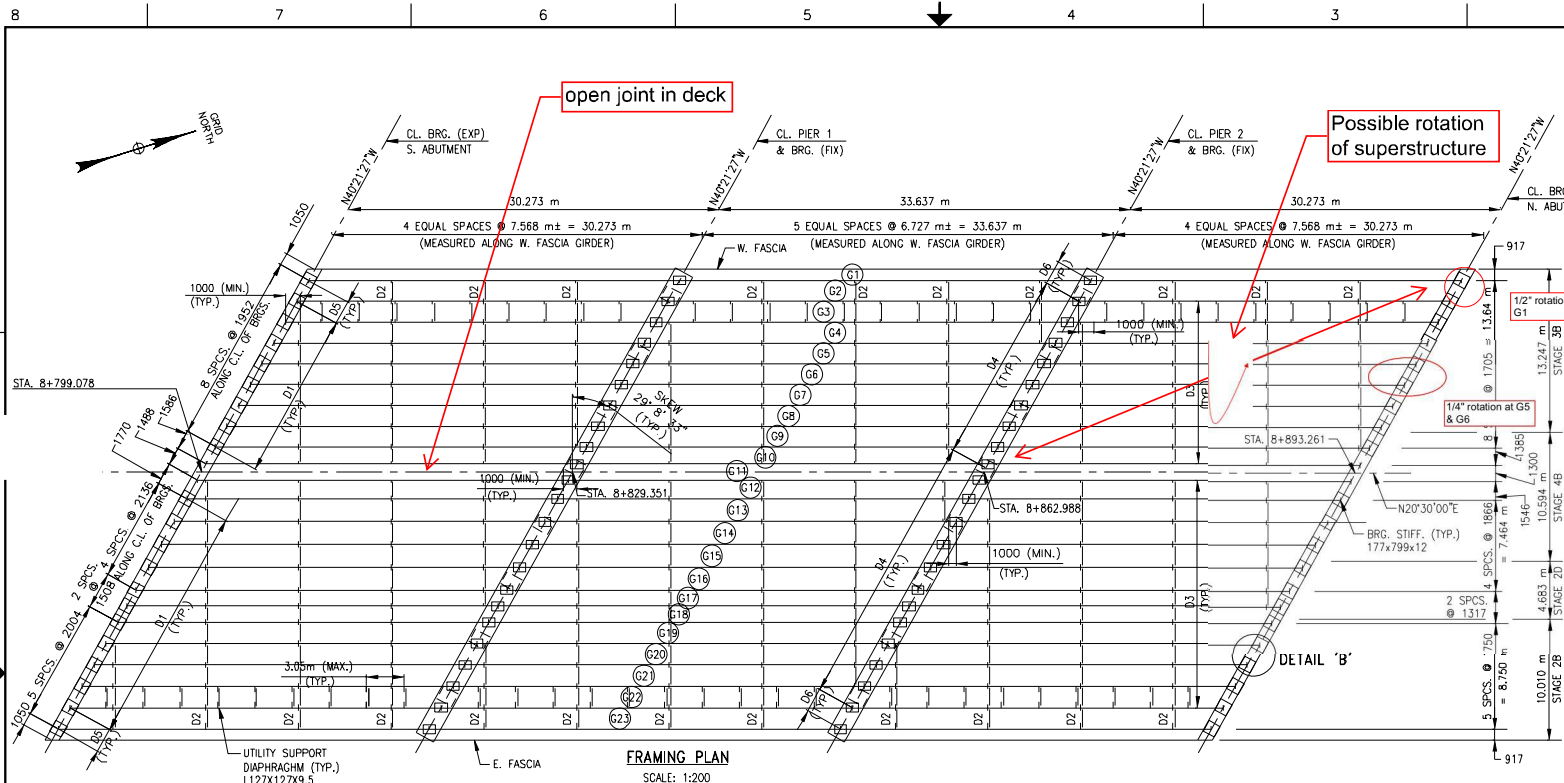


Photo 1 – Bearing at G1 looking northeast, southeast is rotated approximately $\frac{1}{2}^{\circ}$ to the north

Shear failure?



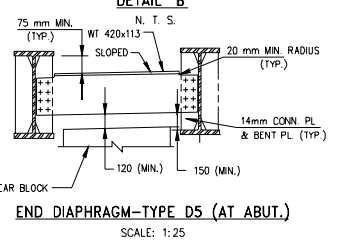
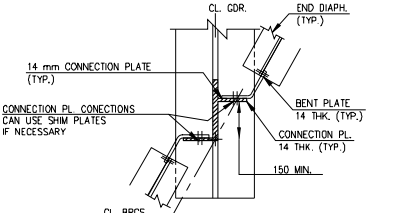
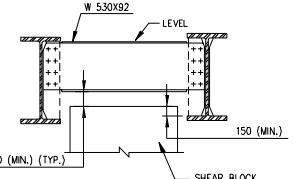
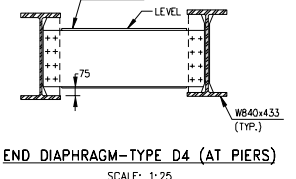
Photo 2, Bearing at G1 looking northeast; southwest corner rotated approximately $1/2$ " east



- NOTES:**
1. ALL BOLTS ARE ASTM A325M, M22 HIGH STRENGTH.
 2. FOR STUD SHEAR CONNECTORS, SEE DWG. NO. S-67.
 3. FOR SPLICE LOCATIONS AND DETAILS, SEE DWG. NO. S-58.
 4. ALL STATIONS ARE IN METERS.
 5. FOR LOCATIONS AND DETAILS OF SHEAR BLOCKS, SEE DWG. NO. S-53 AND S-55.

NOTES:

1. CONNECTION SHALL BE MADE ACCORDING TO THE NEW YORK STATE STEEL CONSTRUCTION MANUAL, WHERE HOLES ARE INDICATED. CONNECTION SHALL BE SLIP CRITICAL AND MADE WITH M22 HIGH-STRENGTH BOLTS.
2. THE CONTRACTOR MAY PLACE DIAPHRAGMS ON EITHER SIDE OF THE CONNECTION PLATES AS NECESSARY TO CORRECT ALIGNMENT PROVIDED THERE WILL BE NO INTERFERENCE WITH OTHER STRUCTURAL DETAILS.
3. TAPERED OR FLAT SHIM PLATES MAY BE USED IN THE CONNECTION BETWEEN DIAPHRAGMS AND THE BEARING STIFFENERS, STIFFENER CONNECTION PLATES OR GUSSET PLATES. VARIABLE THICKNESSES OF SHIM PLATES MAY BE USED. THE MINIMUM THICKNESS OF SHIM PLATE SHALL BE 3 mm WITH A MAXIMUM NUMBER OF THREE SHIM PLATES PERMITTED AT ANY CONNECTION. THE TOTAL THICKNESS OF ALL SHIM PLATES USED AT ANY CONNECTION SHALL NOT EXCEED 25 mm. SHIM PLATES SHALL HAVE THE DIMENSIONS OF THE FAYING SURFACE. THE SHIM MATERIAL SHALL CONFORM TO ASTM DESIGNATION A588M. NO ADDITIONAL PAYMENT WILL BE MADE FOR FURNISHING AND PLACING THE SHIM PLATES.
4. FOR LONGITUDINAL JOINTS IN THE SLAB, E. G. CLOSURE POURS, ONLY ONE SIDE OF THE INTERMEDIATE DIAPHRAGMS UNDER THE JOINT SHALL BE CONNECTED WHEN ERECTED. AFTER ALL PORTIONS OF THE SLAB HAVE BEEN POURED AND SET TO THE SATISFACTION OF THE ENGINEER, THE OTHER SIDE OF THE DIAPHRAGMS SHALL BE CONNECTED.
5. FOR DETAILS OF UTILITY SUPPORT DIAPHRAGM, SEE DWG. NO. S-68.
6. BOTTOM OF UTILITY SUPPORT DIAPHRAGM BETWEEN G2-G3 AND G21-G22 SHALL BE ALIGNED WITH BOTTOM OF INT. DIAPHRAGM AND END DIAPHRAGMS AT PIERS AND ABUTMENTS. THE ELECTRICAL CONDUITS SHALL NOT PROJECT BELOW BOTTOM OF BOTTOM FLANGES OF GIRDERS.



ALL DIMENSIONS ARE SHOWN IN MILLIMETERS UNLESS OTHERWISE NOTED.