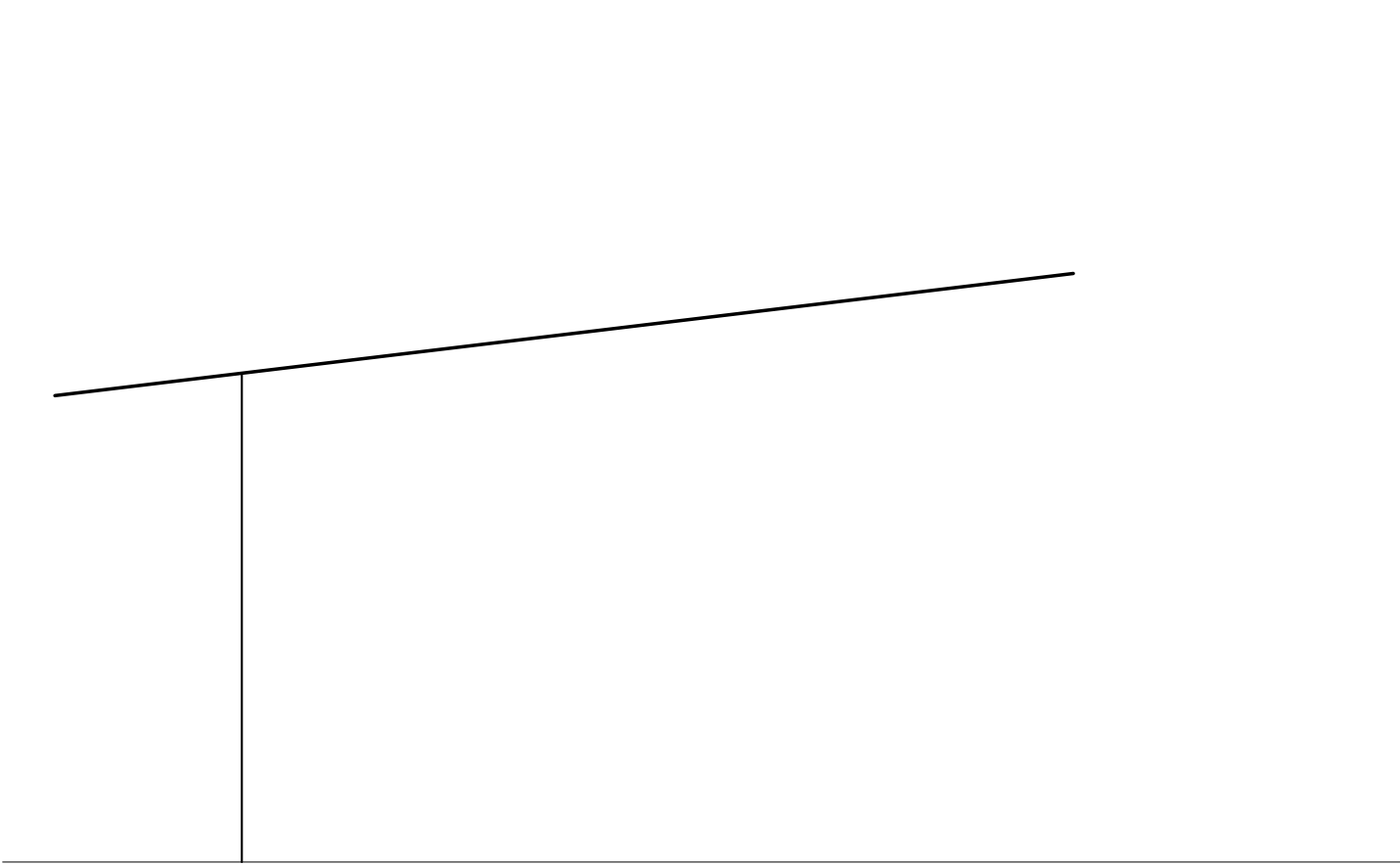
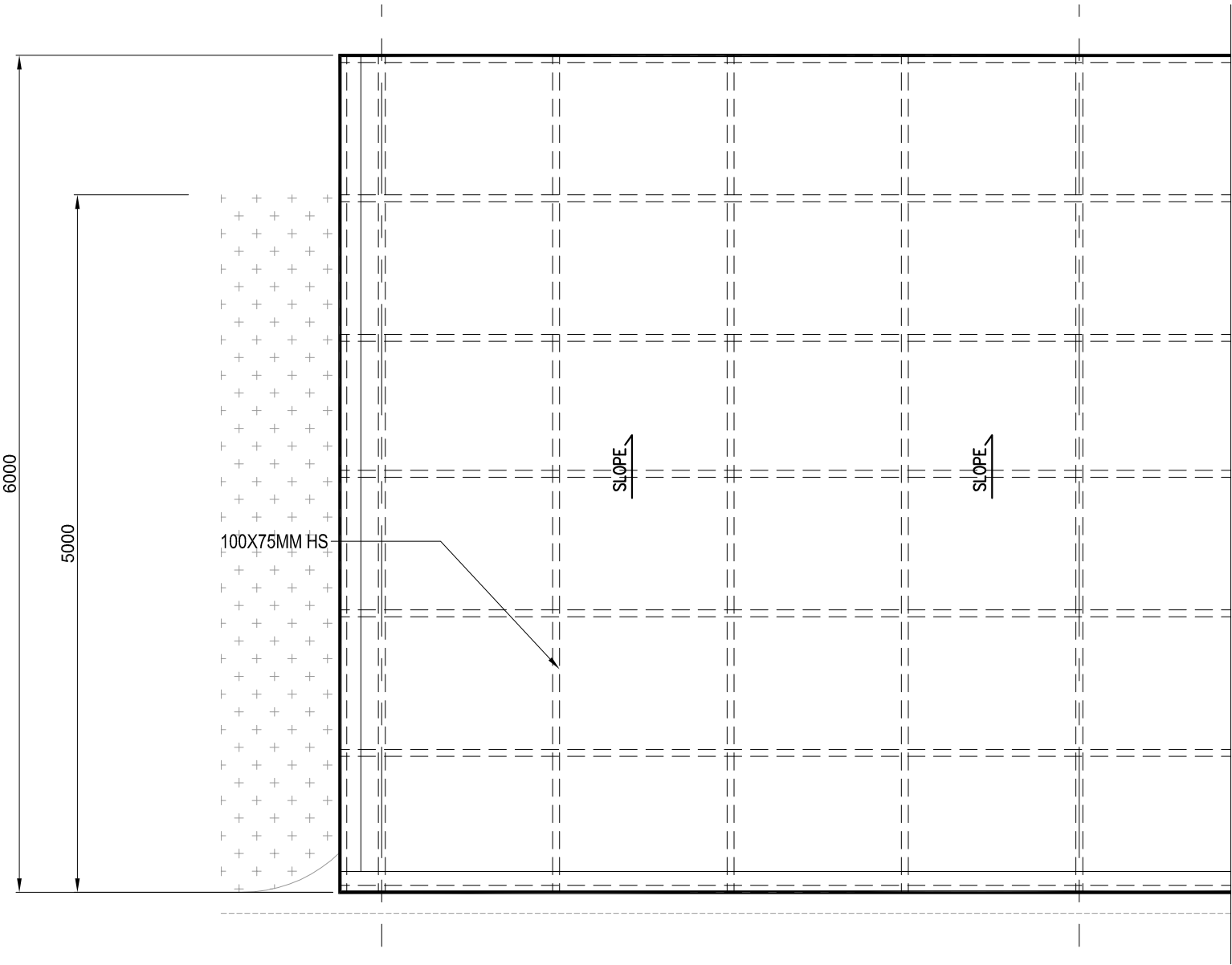
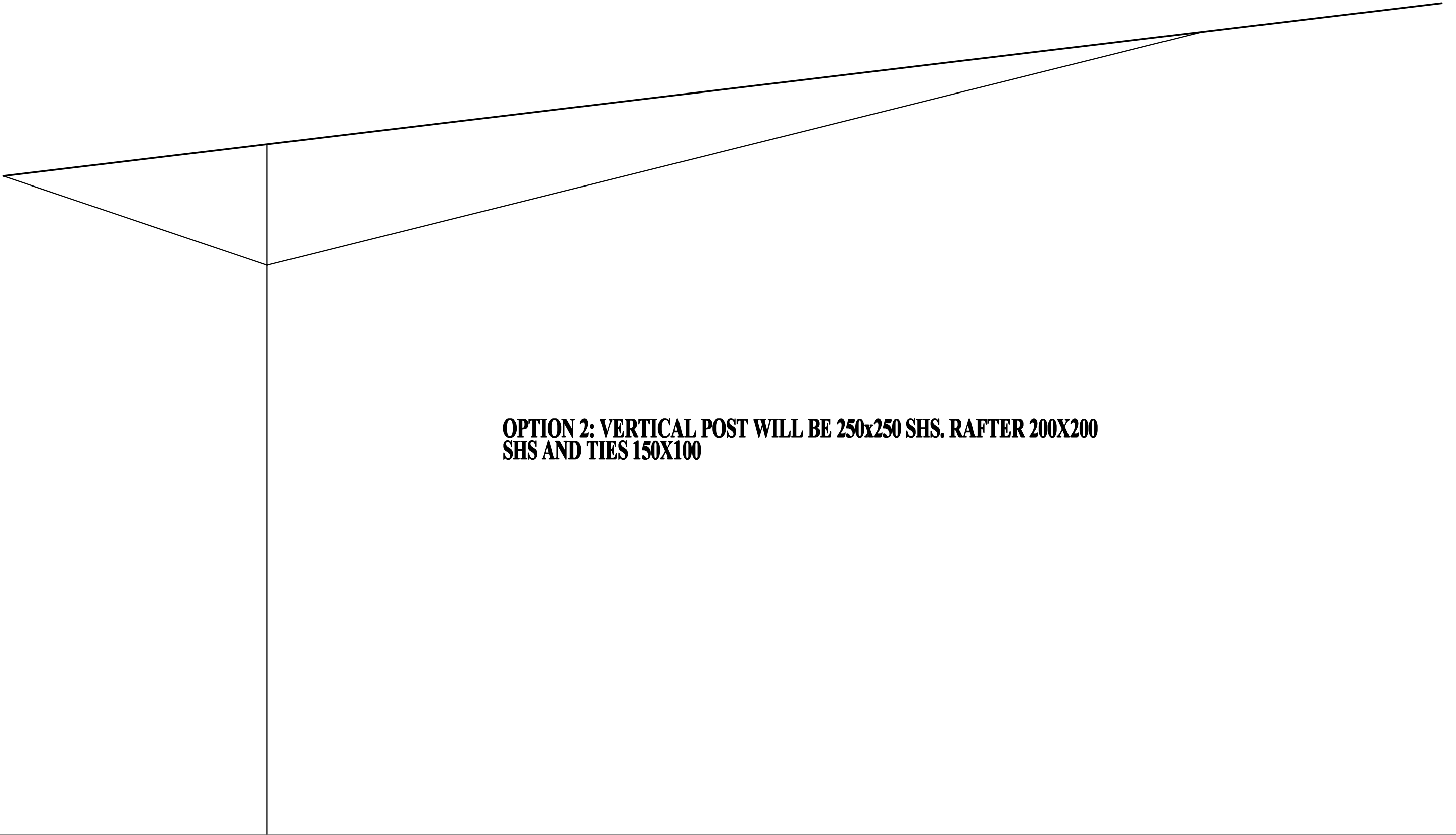


PLAN LAYOUT OF  
CARPARK



**OPTION 1 (ARCHITECT): THEY INTEND TO  
USE 200x200 SHS FOR THE VERTICAL POST  
AND RAFTER WOULD BE 100x75mm RHS  
WITH ROOF FRAMING AS SHOWN ON THE  
RIGHT)**





**OPTION 2: VERTICAL POST WILL BE 250x250 SHS. RAFTER 200X200  
SHS AND TIES 150X100**