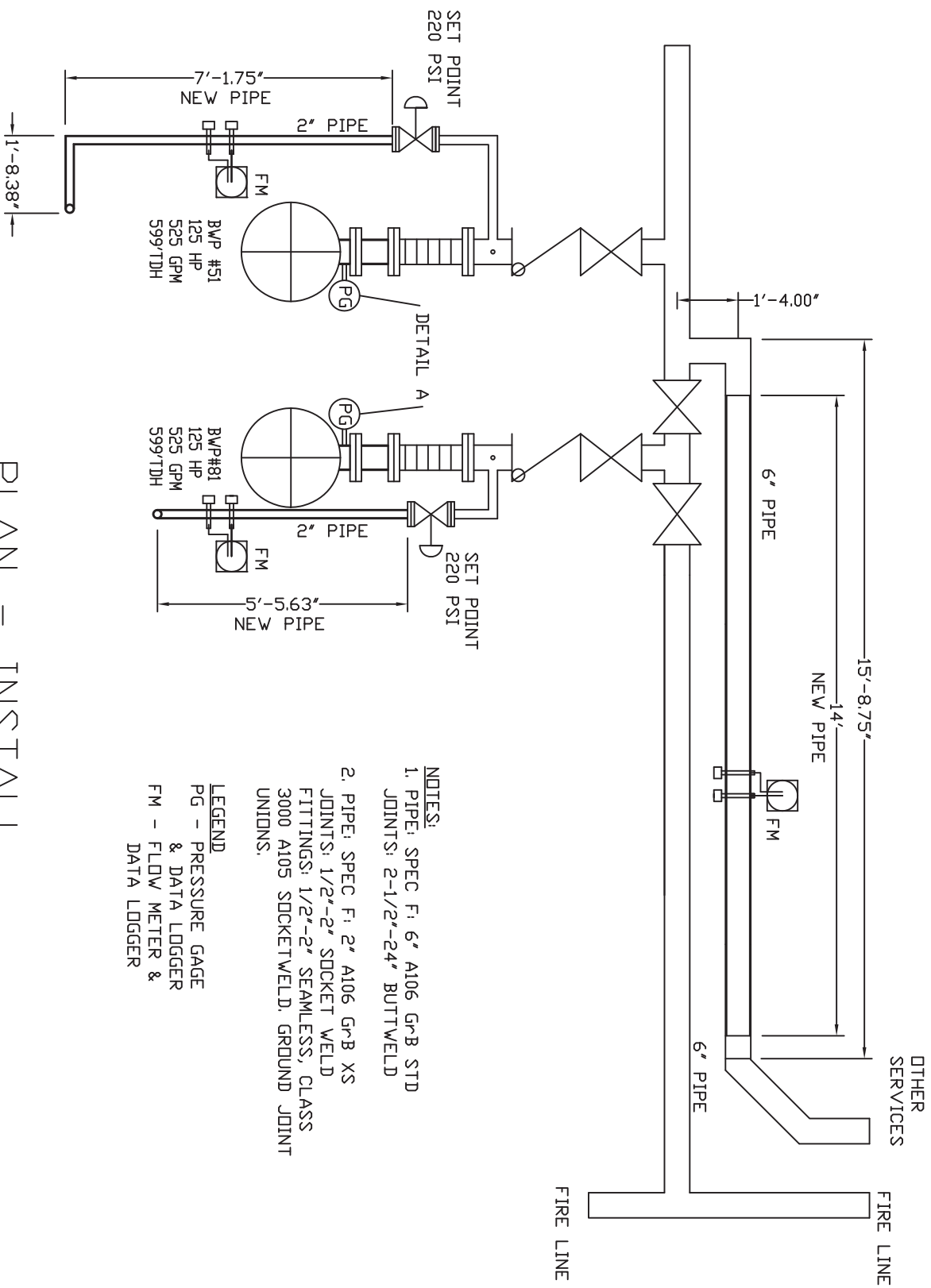


PLAN - REMOVAL  
WAI'AU BOILER WASH PUMPS 51 & 81





# NOTES:

1. PIPE: SPEC F: 6" A106 GrB STD JOINTS: 2-1/2"-24" BUTTWELD

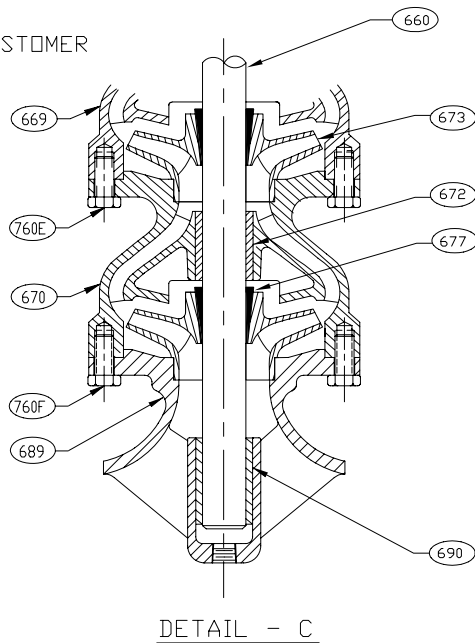
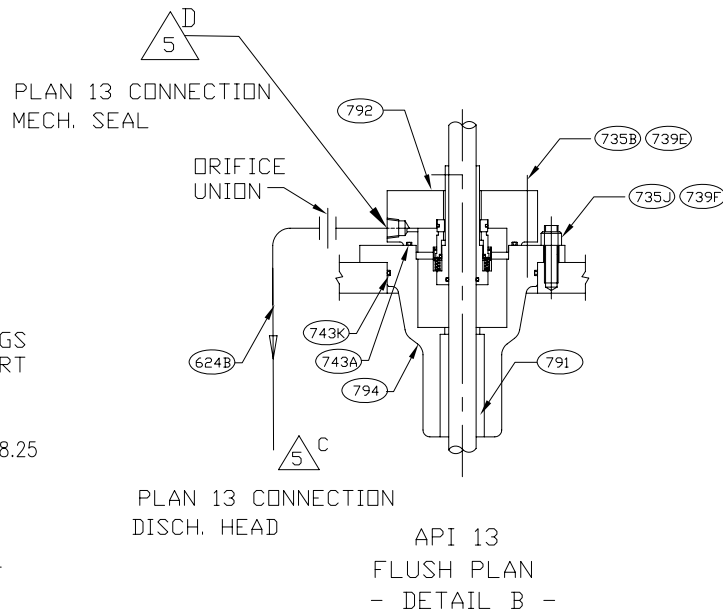
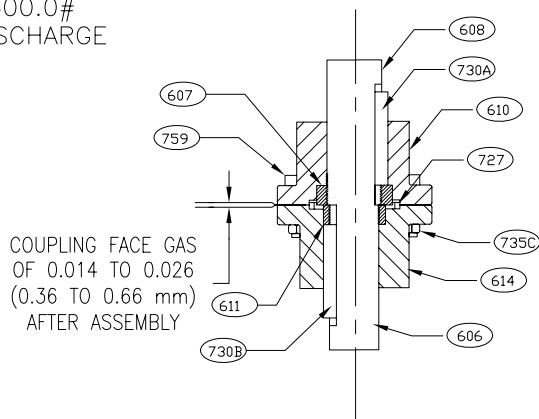
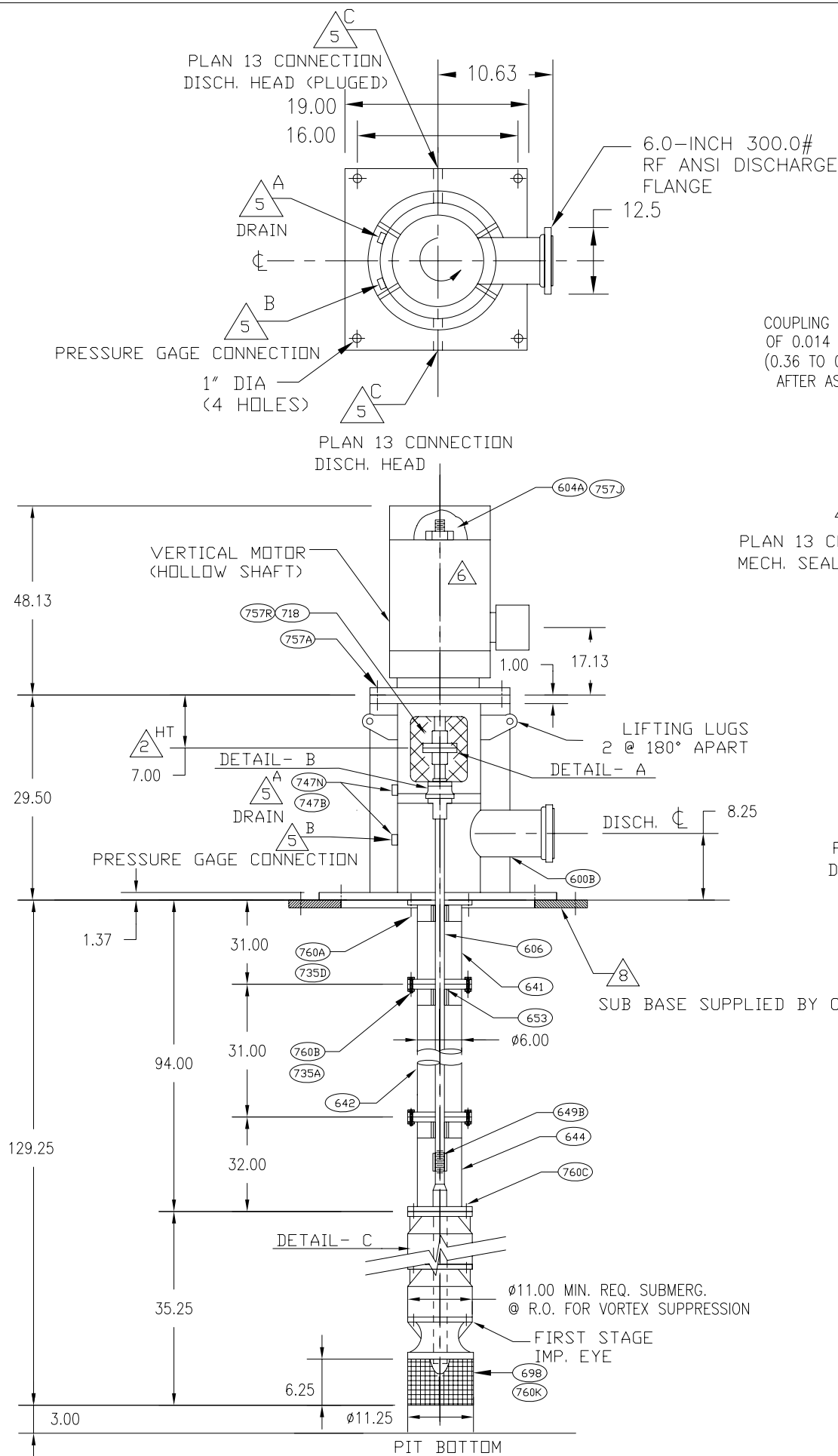
2. PIPE: SPEC F: 2" A106 GrB XS JOINTS: 1/2"-2" SOCKET WELD FITTINGS: 1/2"-2" SEAMLESS, CLASS 3000 A105 SOCKETWELD, GROUND JOINT UNIONS.

## LEGEND

PG - PRESSURE GAGE & DATA LOGGER  
FM - FLOW METER & DATA LOGGER

## PLAN - INSTALL



WAI'AU BOILER WASH PUMPS 51 & 81



ITEM NO.	QTY.	DESCRIPTION	MATERIAL
SUB-ASSEMBLY - HEAD & COLUMN			
600B	1	HEAD	PIPE - ASTM A276 TP 316 S.S.
			PLATE - ASTM A276 TP 316 S.S.
			RIB - ASTM A276 TP 316 S.S.
			FLANGE - ASTM A276 TP 316 S.S.
			FITTING - ASTM A276 TP 316 S.S.
604A	1	ADJUSTING NUT	ASTM A276 TP 316 S.S.
606	1	HEADSHAFT	ASTM A276 TP 316 S.S.
607	1	THREADED RING	ASTM A276 TP 316 S.S.
608	1	DRIVESHAFT	ASTM A276 TP 316 S.S.
610	1	DRIVER HUB	ASTM A276 TP 316 S.S.
611	1	THREADED RING	ASTM A276 TP 316 S.S.
614	1	PUMP HUB	ASTM A276 TP 316 S.S.
641	1	COLUMN - TOP	ASTM A276 TP 316 S.S.
642	1	COLUMN - INTMD	ASTM A276 TP 316 S.S.
644	1	COLUMN - BOTTOM	ASTM A276 TP 316 S.S.
649B	1	COUPLING - HEADSHAFT	ASTM A276 TP 316 S.S.
653	3	BEARING - HEADSHAFT	GREENTWEED
718	2	GUARD - COUPLING	ASTM A276 TP 316 S.S.
727	1	ALIGNMENT RING	ASTM A276 TP 316 S.S.
730A	1	DRIVER KEY	ASTM A276 TP 316 S.S.
730B	1	PUMP KEY	ASTM A276 TP 316 S.S.
735A	16	HEX NUT	ASTM A276 TP 316 S.S.
735D	8	HEX NUT	ASTM A276 TP 316 S.S.
735C	6	HEX NUT	ASTM A276 TP 316 S.S.
747B	1	PIPE PLUG - DRAIN	ASTM A276 TP 316 S.S.
747N	1	PIPE PLUG - LUBE	ASTM A276 TP 316 S.S.
757A	4	HEX HD CAPSCREW	SAE J429 GR8
757J	1	LOCK SCREW	ASTM A276 TP 316 S.S.
757R	4	CAPSCREW	ASTM A276 TP 316 S.S.
759	6	CAPSCREW	ASTM A276 TP 316 S.S.
760A	8	STUD	ASTM A276 TP 316 S.S.
760B	16	HEX HD CAPSCREW	ASTM A276 TP 316 S.S.
760C	8	HEX HD CAPSCREW	ASTM A276 TP 316 S.S.
SUB-ASSEMBLY - MECHANICAL SEAL			
624B	1	SEAL HSG. BY-PASS LINE	ASTM A276 TP 316 S.S.
743A	1	O-RING-GLD/SLHSG	VITON
743K	1	O-RING-SLHSG/HD	VITON
739E	4	STUD-GLD/SLHSG	ASTM A276 TP 316 S.S.
739F	6	CAPSCREW-SLHSG/HD	ASTM A276 TP 316 S.S.
735B	4	HEX NUT - GLD/SLHSG	ASTM A276 TP 316 S.S.
791	1	BEARING - SLHSG LOWER	GREENTWEED
792	1	SEAL - MECHANICAL	ASTM A276 TP 316 S.S.
794	1	HOUSING - SEAL	ASTM A744 TP 316 S.S.
SUB - ASSEMBLY - BOWL			
660	1	PUMPSHAFT	ASTM A276 TP 316 S.S.
669	1	BOWL - TOP	ASTM A774 TP 316 S.S.
670	2	BOWL - INTMD	ASTM A774 TP 316 S.S.
672	3	BEARING - BOWL	GREENTWEED
673	3	IMPELLER	ASTM A774 TP 316 S.S.
677	3	TAPER LOCK	ASTM A774 TP 316 S.S.
689	1	SUCTION - BELL	ASTM A774 TP 316 S.S.
690	1	BEARING - SUCTION	GREENTWEED
760E	16	HEX HD CAPSCREW-BOWL	ASTM A774 TP 316 S.S.
760F	8	HEX HD CAPSCREW-BELL	ASTM A774 TP 316 S.S.
760K	4	CAPSCREW	ASTM A276 TP 316 S.S.
698	1	STRAINER - BASKET/CONE	ASTM A276 TP 316 S.S.

NO.	NOTES
1	TOLERANCE ON ALL DIMENSIONS IS $\pm 1/8"$ OR $\pm 1/8"$ PER 5 FEET, WHICHEVER IS GREATER. TOLERANCE ON ALL PIPING DIMENSIONS AS FOLLOWS: SUCTION/DISCHARGE NOZZLE FLANGES IS $\pm 1/8"$ AUXILIARY CONNECTIONS ARE $\pm 1.00$
2	HT - DISTANCE OF DRIVER FACE TO TOP OF HEADSHAFT.
3	ALL DIMENSIONS SHOWN ARE IN INCHES UNLESS OTHERWISE STATED.
4	DRAWING IS NOT TO SCALE.
5	A - 1/2 N.P.T. DRAIN B - 3/4" N.P.T. PRESSURE GAGE CONNECTION C - 1/2" N.P.T. PLAN 13 CONNECTION DIS. HEAD D - 1/2" N.P.T. PLAN 13 CONNECTION MECH. SEAL
6	DRIVER MAY BE ROTATED AT 90° INTERVALS ABOUT VERTICAL CENTERLINE. FOR DETAILS REFER TO DRIVER DIMENSION DRAWINGS.
7	BEFORE INITIAL PUMP START-UP, IMPELLER MUST BE LIFTED .187
8	SUB BASE SUPPLIED BY CUSTOMER.

PERFORMANCE:	
P.O.:	V35080
SERVICE:	W81 BOILER WASH PUMP
LIQUID:	FRESH WATER
CAPACITY:	525.0 GPM
RATED HEAD:	600.0 FT
TEMPERATURE:	70.0 DEG. F
SpGR/VISC:	1.00/1.000 cp
DISCH. PRES:	260.1 PSI. G @ DESIGN
ELECTRIC MOTOR:	VERTICAL HOLLOW SHAFT
MANUFACTURER:	US ELECTRIC
ENCLOSURE:	TEFC
POWER:	125.0 HP 3/60 HZ/460 @ 3600RPM
FRAME:	444TP
DISCHARGE HEAD:	316LSS 6 IN.
SEALING METHOD:	
MECH. SEAL:	JOHN CRANE 8B1XF1X0951 (BSTFN)
COUPLING:	RIGID COUPLING (TYPE AR)
COLUMN:	3 SECTION
COL. DIAMETER:	6.00 IN
CAN DIAMETER:	6.00 INCH.
BOWL:	3 STAGES
SIZE:	11RALC
WEIGHTS	
PUMP:	1230 LB
DRIVE:	1800 LB
TOTAL:	3030 LB

DO NOT USE FOR CONSTRUCTION UNLESS CERTIFIED			
CERTIFIED BY IGOR KAROGLANYAN		DATE 12-18-09	
TITLE OUTLINE MODEL VIT-L W81 BOILER WASH PUMP			
DRAWN BY TINA T.	DATE 05-28-09	CHECK BY IGOR K.	DATE 05-28-09
 <b>ITT</b> Engineered for life		 J.O. & DWG NO. 64077	