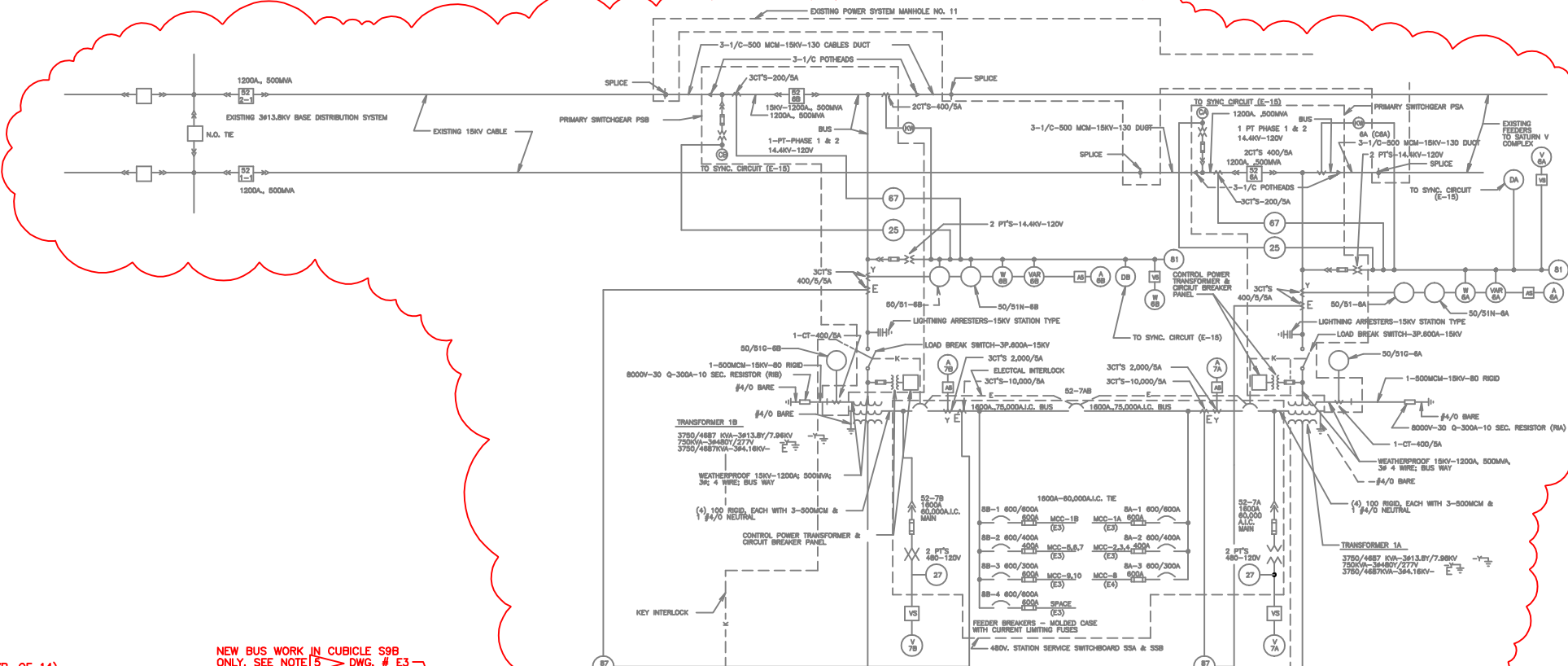


LEGEND

- 27 - UNDERVOLTAGE DEVICE
- 32 - REVERSE POWER DEVICE
- 40 - LOSS OF EXCITATION DEVICE
- 50/51V - OVERCURRENT DEVICE W/ VOLTAGE RESTRAINT
- 81U - UNDERFREQUENCY DEVICE
- 87G - GENERATOR DIFFERENTIAL DEVICE
- 87N - GROUND DIFFERENTIAL DEVICE
- 51G - GROUND OVERCURRENT
- AM - AMMETER
- AS - AMMETER SWITCH
- WM - WATTMETER
- VARM - VAR METER
- VM - VOLTMETER
- VS - VOLTMETER SWITCH
- DCVM - DC VOLTMETER
- DCAM - DC AMMETER
- Σ - CURRENT TRANSFORMER
- $\frac{1}{\Sigma}$ - POTENTIAL TRANSFORMER
- $\llcorner \square \lrcorner$ - CIRCUIT BREAKER
- WOODWARD DSLC - DIGITAL SYNCHRONIZER AND LOAD CONTROL UNIT
- WOODWARD 701 - 701 DIGITAL-SPEED CONTROLLER
- POWER MONITOR - A-B POWER MONITOR II
- WOODWARD MSLC - MASTER SYNCHRONIZER AND LOAD CONTROL UNIT
- BECKWITH 3420 - GENERATOR PROTECTION MODULE



RETROFIT 5KV BREAKERS (TYP. OF 14)
SEE DWG. # E3

NEW BUS WORK IN CUBICLE S9B
ONLY. SEE NOTE 5 DWG. # E3

REPLACE 5KV CABLES (TYP. OF 4 RUNS)
SEE DWG. # E2

SEE NOTE 8, DWG. # E2

GENERAL NOTES:

- ALL WORK SHALL BE PERFORMED IN ACCORDANCE WITH THE LATEST EDITIONS OF THE NATIONAL ELECTRICAL CODE NFPA 70 AND THE NATIONAL ELECTRICAL SAFETY CODE C2.
- ALL DEMOLITION AND MODIFICATION WORK SHALL BE COORDINATED AND APPROVED BY THE CONTRACTING OFFICERS TECHNICAL REPRESENTATIVE PRIOR TO IMPLEMENTATION.
- AFTER EQUIPMENT MODIFICATION, ALL SURPLUS WIRING, CONDUIT BRACING ETC. SHALL BE REMOVED FROM THE SWITCHGEAR ENCLOSURES. ANY MODIFICATIONS REQUIRING CUTTING EXISTING METAL OR ADDING METAL PANELS SHALL BE PRIMED AND PAINTED TO MATCH EXISTING.
- BOLD PORTION OF ONE-LINE DIAGRAMS IN THIS PACKAGE IS REPRESENTATIVE OF ITEMS TO BE REPLACED, MODIFIED OR REMOVED UNDER THIS CONTRACT. SEE SPECIFICATIONS AND DRAWINGS FOR SCOPE OF WORK AND DETAILS.
- SEE PROPOSED GENERATOR ONE LINE DIAGRAM ON DRAWING NO. E4 FOR TYPICAL MODIFICATIONS UNDER THIS PROJECT.
- ALL DIMENSIONS SHOWN ON THESE DRAWINGS ARE APPROXIMATE. EXISTING CABINET DETAILS SHALL BE VERIFIED BY THE CONTRACTOR FOR EXACT REQUIREMENTS.
- SEE SHT. E3 FOR LOCATION OF CUBICLES

CLOUDED PORTION IS NOT IN CONTRACT - REFERENCE ONLY.
(TO BE MODIFIED BY 96NRCZ)

