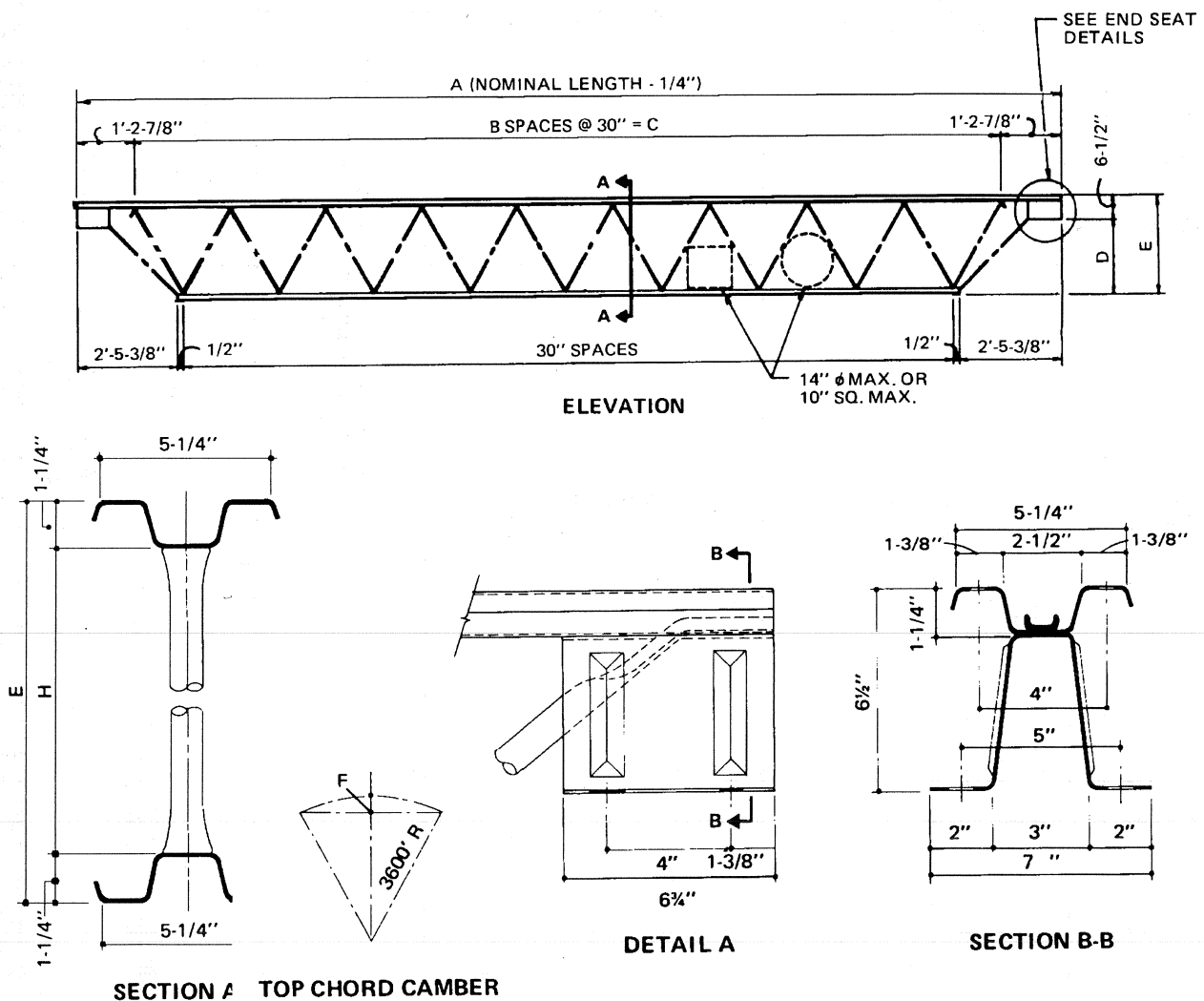


Bay Length					Live Load Designation (psf)											Weight (lbs)
20'	25'	30'	40'	50'	12*	20	30	40	50	A (Nom)	B (Spaces)	C	D	E	F	
X					X	X	X	X	X	20'	7	17'-6"	14"	20-1/2"	5/32"	106
	X				X	X	X	X	X	25'	9	22'-6"	14"	20-1/2"	1/4"	133
		X			X	X	X	X		30'	11	27'-6"	14"	20-1/2"	3/8"	161
			X						X	30'	11	27'-6"	23"	29-1/2"	3/8"	174
				X	X					40'	15	37'-6"	14"	20-1/2"	21/32"	213
			X				X			40'	15	37'-6"	23"	29-1/2"	21/32"	240
			X					X		40'	15	37'-6"	23"	29-1/2"	21/32"	273
			X						X	40'	15	37'-6"	23"	29-1/2"	21/32"	319
				X	X	X				50'	19	47'-6"	23"	29-1/2"	1-1/32"	317
				X			X			50'	19	47'-6"	23"	29-1/2"	1-1/32"	368
				X				X		50'	19	47'-6"	23"	29-1/2"	1-1/32"	439

* Actual live load on 12-15 UBC (LM29) load purlins is 20 psf for 20' and 30' bays and 16 psf for 40' and 50' bays.



TRUSS PURLINS