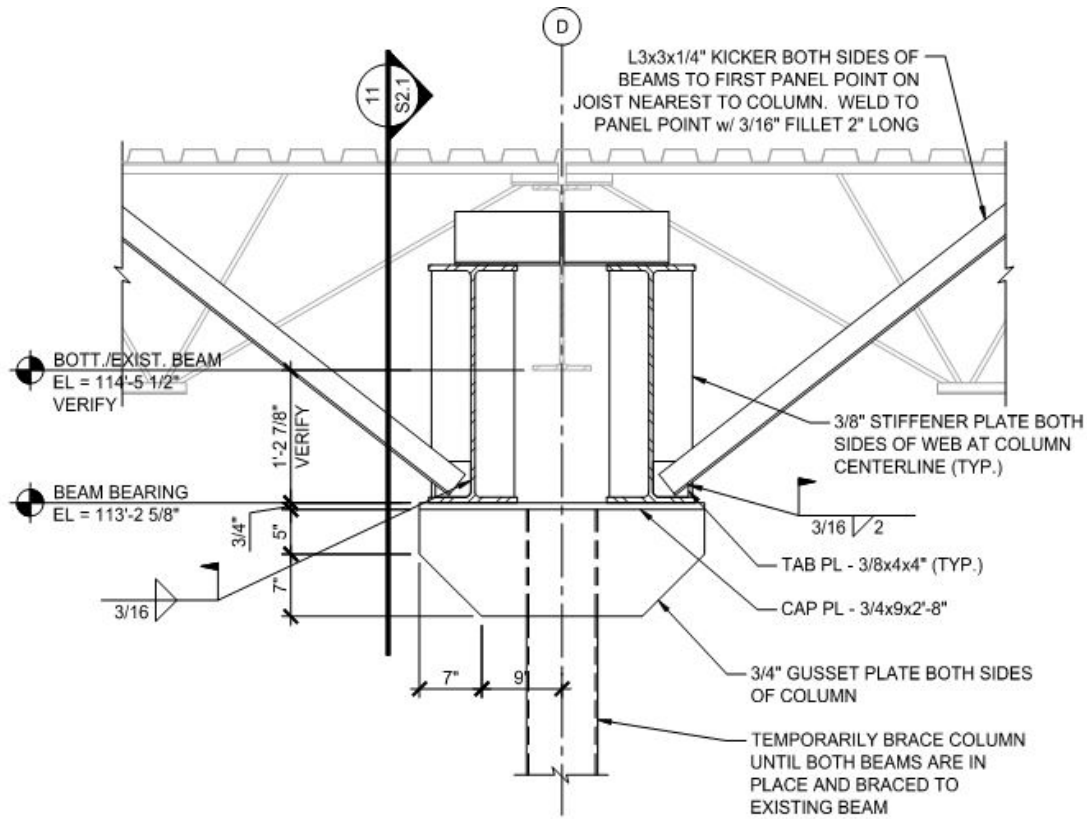
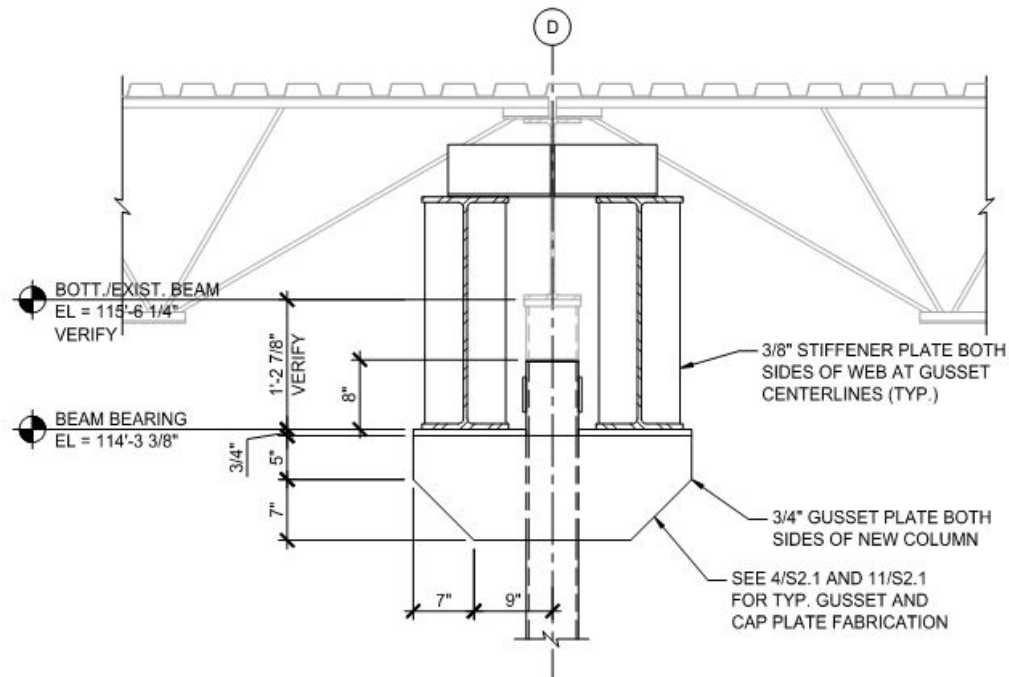


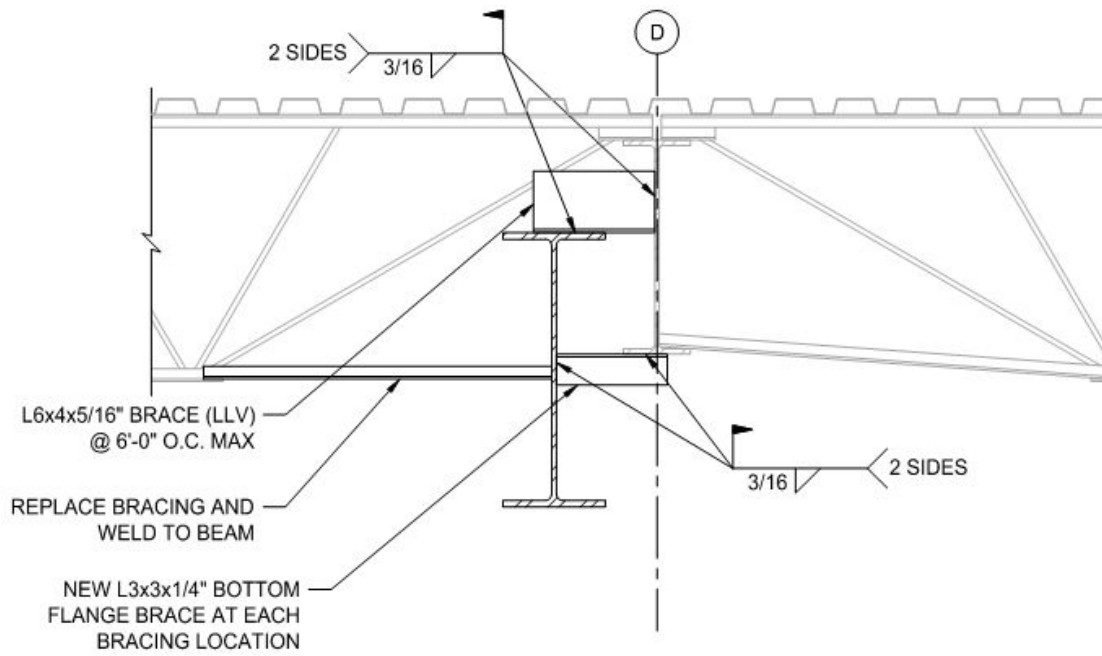
3 SECTION AT BEAM SUPPORT
SCALE: 3/4" = 1'-0"



4 SECTION AT COLUMN BRACKET
 SCALE: 3/4" = 1'-0"



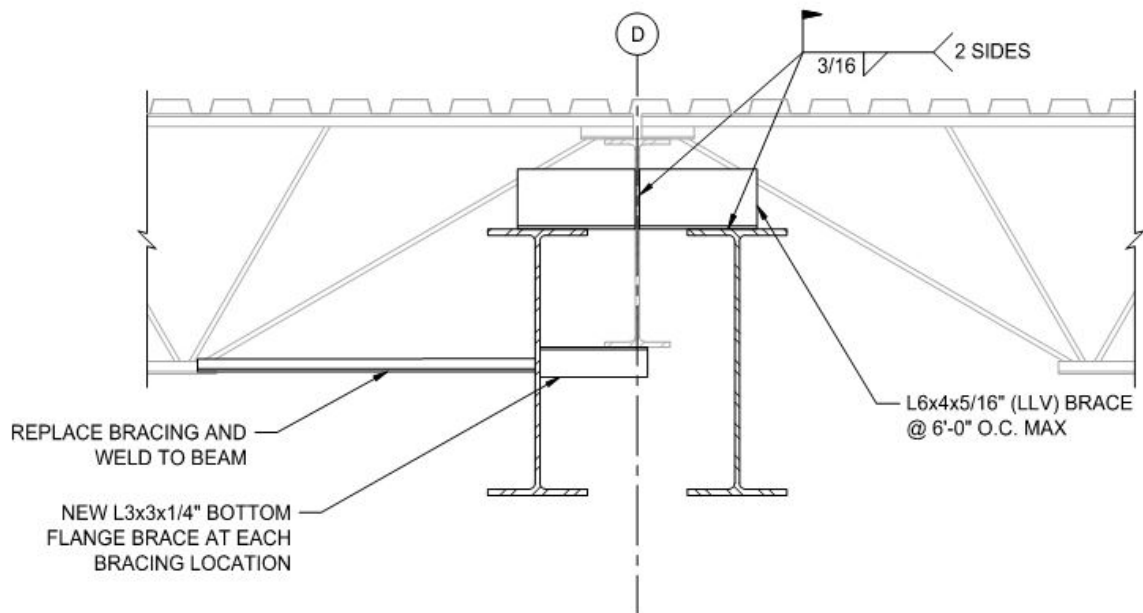
5 SECTION AT COLUMN BRACKET
 SCALE: 3/4" = 1'-0"



8

DETAIL FOR CONSTRUCTION SEQUENCING

SCALE: $\frac{3}{4}" = 1'-0"$



9

DETAIL FOR CONSTRUCTION SEQUENCING

SCALE: $\frac{3}{4}" = 1'-0"$

CONSTRUCTION SEQUENCE:

1. INSTALL NEW FOOTING AND COLUMN ON GRID 4.8
2. INSTALL NEW COLUMN SISTERED TO EXISTING COLUMN ON GRID 3
3. CUT EXISTING BEAM BOTTOM FLANGE BRACING ON ONE SIDE OF EXISTING BEAM AND INSTALL NEW BEAM ON THAT SIDE (SEE 7/S2.1)
4. AFTER BEAM HAS BEEN ERECTED, ATTACH NEW BOTTOM FLANGE BRACING (SEE 8/S2.1)
5. CUT EXISTING BEAM BRACING ON OPPOSITE SIDE OF EXISTING BEAM AND INSTALL SECOND NEW BEAM AND ASSOCIATED BRACES (SEE 9/S2.1)
6. INSTALL NEW SUPPORTS FOR EXISTING BEAM BETWEEN NEW BEAMS (SEE 3/S2.1)
7. AFTER ALL SUPPORTS ARE IN PLACE, EXISTING COLUMN ON (D, 4) MAY BE CUT AND REMOVED