

the column vertical bars above either by lap splicing (see Fig. 12-7), or by using mechanical or welded splices.

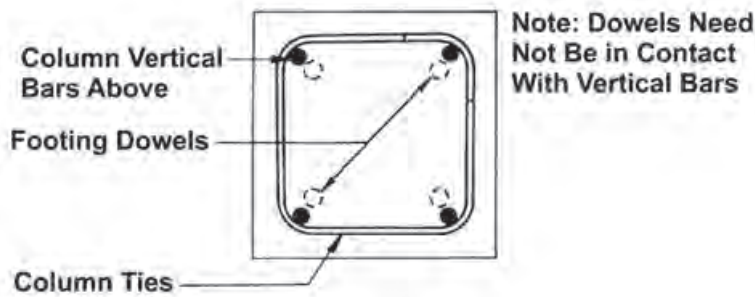


Fig. 12-7 Dowels and Column Vertical Bars

Dowels are placed in a variety of ways. Two examples follow:

(1) One widely-accepted practice is to use a template made of wooden boards; or with a template tie or a single turn of spiral tied to the template boards (see Fig. 12-8). The dowels can then be located and carefully placed together with the footing mat bars. Where hooks are used on dowels, additional stability is obtained by tying the hooked ends to the footing mat. If mechanical or welded splices are used, the dowels must be set in line directly under the column vertical bars above.

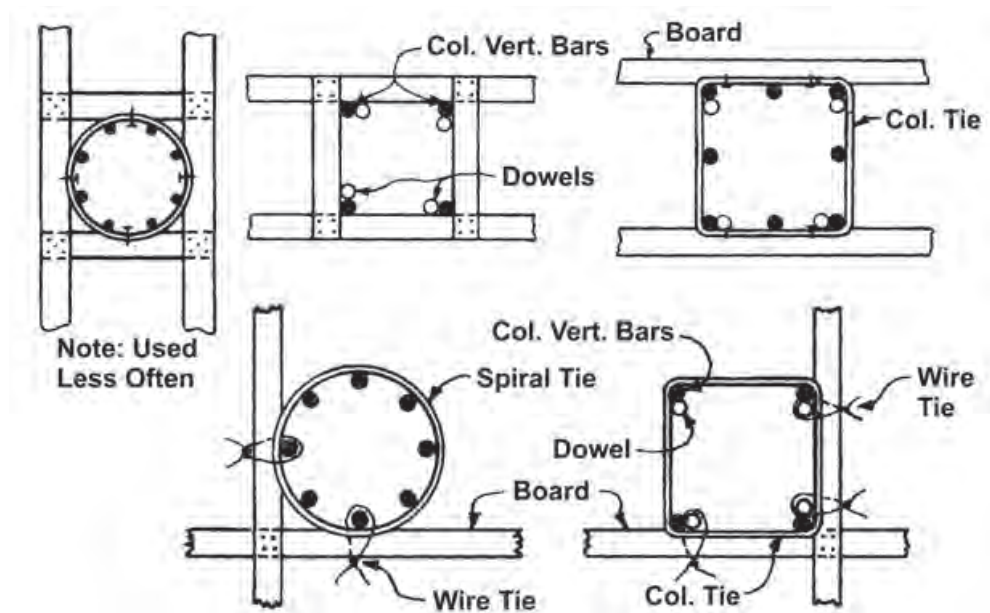


Fig. 12-8 Templates for Positioning Dowels and Column Vertical Bars

(2) Dowels are often provided with 90° hooks. The hooks provide a means of support where they rest on the footing mat. A dowel cage is made by assembling the dowels, using two or more sets of template