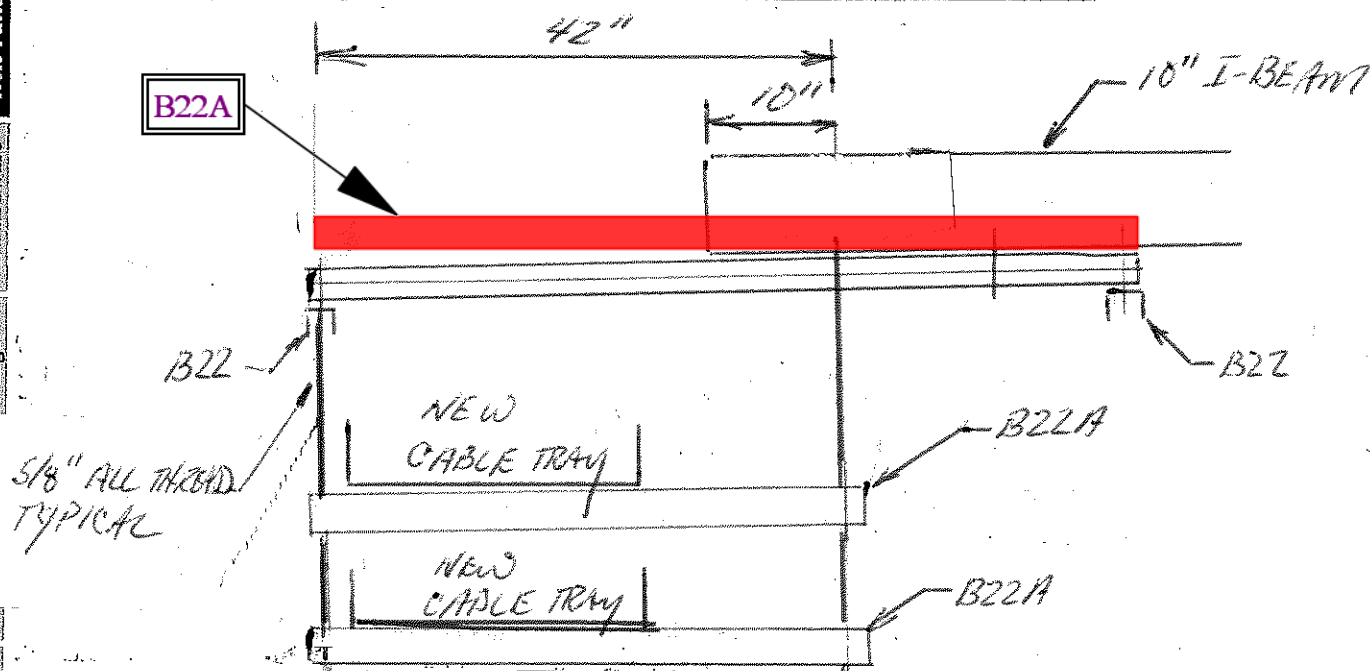


# B22 CHANNEL

B-Line



## SECTION PROPERTIES

		X - X Axis								Y - Y Axis					
Channel	Weight lbs./ft. kg/m	Areas of Section sq. in. cm <sup>2</sup>		Moment of Inertia (I) in. <sup>4</sup> cm <sup>4</sup>		Section Modulus (S) in. <sup>3</sup> cm <sup>3</sup>		Radius of Gyration (r) in. cm		Moment of Inertia (I) in. <sup>4</sup> cm <sup>4</sup>		Section Modulus (S) in. <sup>3</sup> cm <sup>3</sup>		Radius of Gyration (r) in. cm	
B22	1.910 (2.84)	562 (3.62)	1912 (7.96)	2125 (3.48)	583 (1.48)	2399 (9.99)	2953 (4.84)	653 (1.66)							
B22A	3.820 (5.69)	1124 (7.25)	9732 (40.51)	5989 (9.81)	931 (2.36)	4798 (19.97)	5905 (9.68)	653 (1.66)							
B22X	6.649 (9.89)	1.956 (12.62)	4.1484 (172.67)	1.7019 (27.89)	1.456 (3.70)	1.1023 (45.88)	1.2027 (19.71)	.751 (1.91)							

Calculations of section properties are based on metal thicknesses as determined by the AISI Cold-Formed Steel Design Manual.

