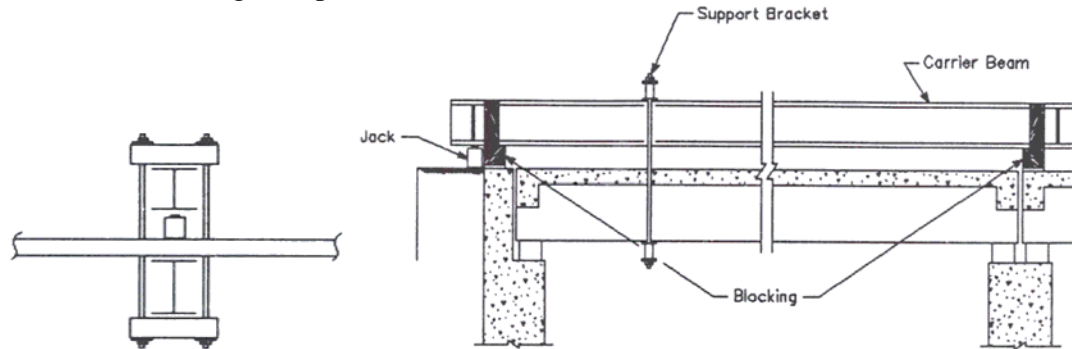


## **INSTALLATION OF A CARRIER BEAM**

Jacking may be very difficult at some bridges due to the height of superstructure, traffic below the superstructure, or depth of water. An alternative to jacking from below is the use of a carrier beam to support the superstructure from the deck. See Exhibit XI-4 for details. It is a good idea to save a salvaged beam of appropriate size to use for this purpose. Traffic safety is a major consideration if the bridge is open to traffic while the beam is in use.



**Exhibit XI.4 Carrier Beam**