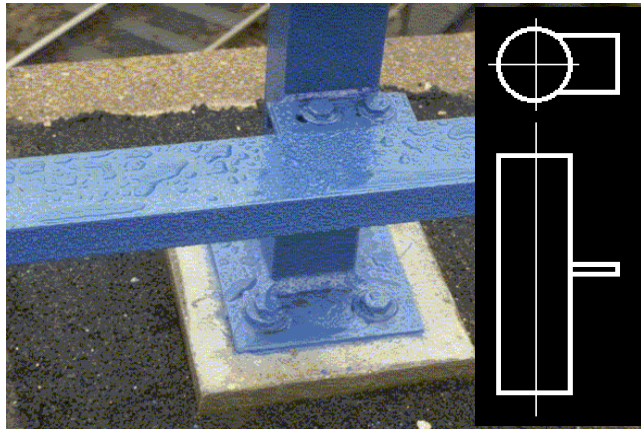
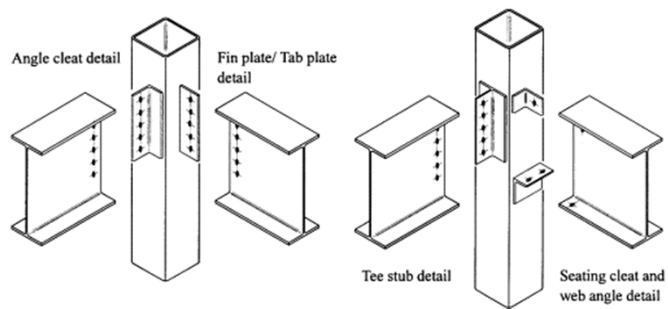


HSS Connection Types

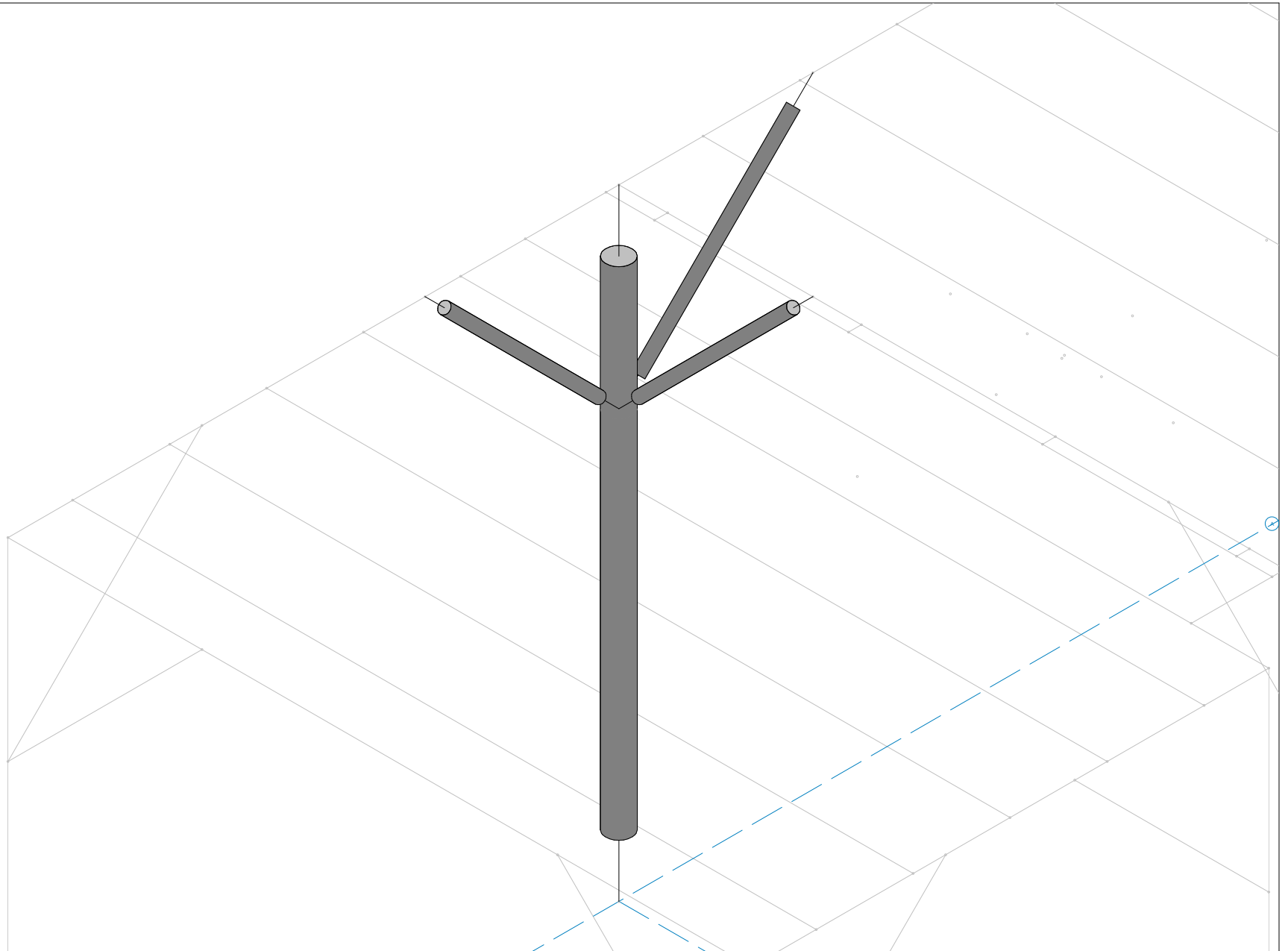
Line Loads & Concentrated Loads



Shear Connections



3 or 4 braces in compression. Braces are gusseted and bolted similar to above.



How to calculate column capacity when all (3) braces are in compression? I have looked in AISC and CIDECT for guidance on this situation but have not found anything specific pertaining to multiple brace forces on a column at the same elevation.