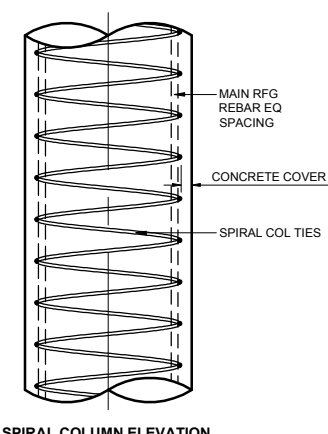
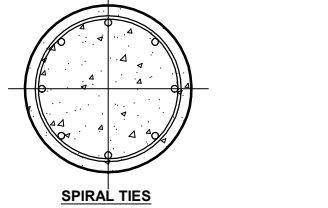
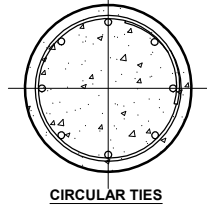
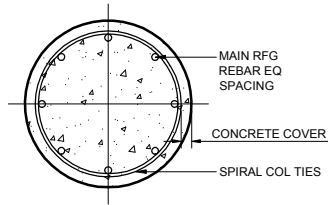
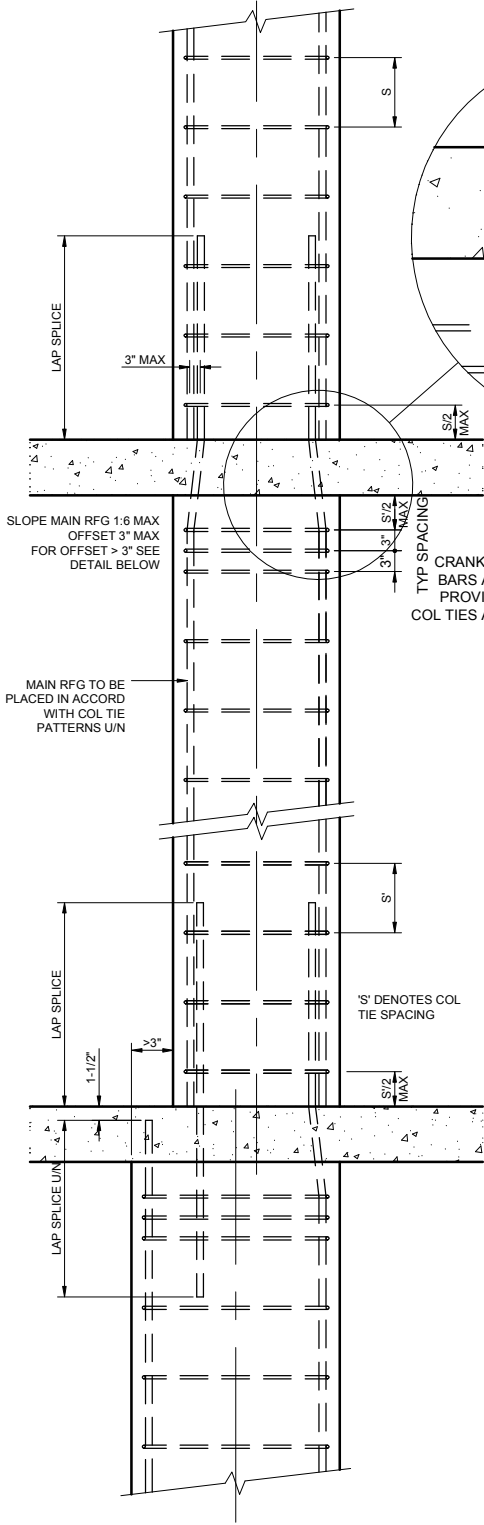


TYPICAL COLUMN TIE PATTERNS

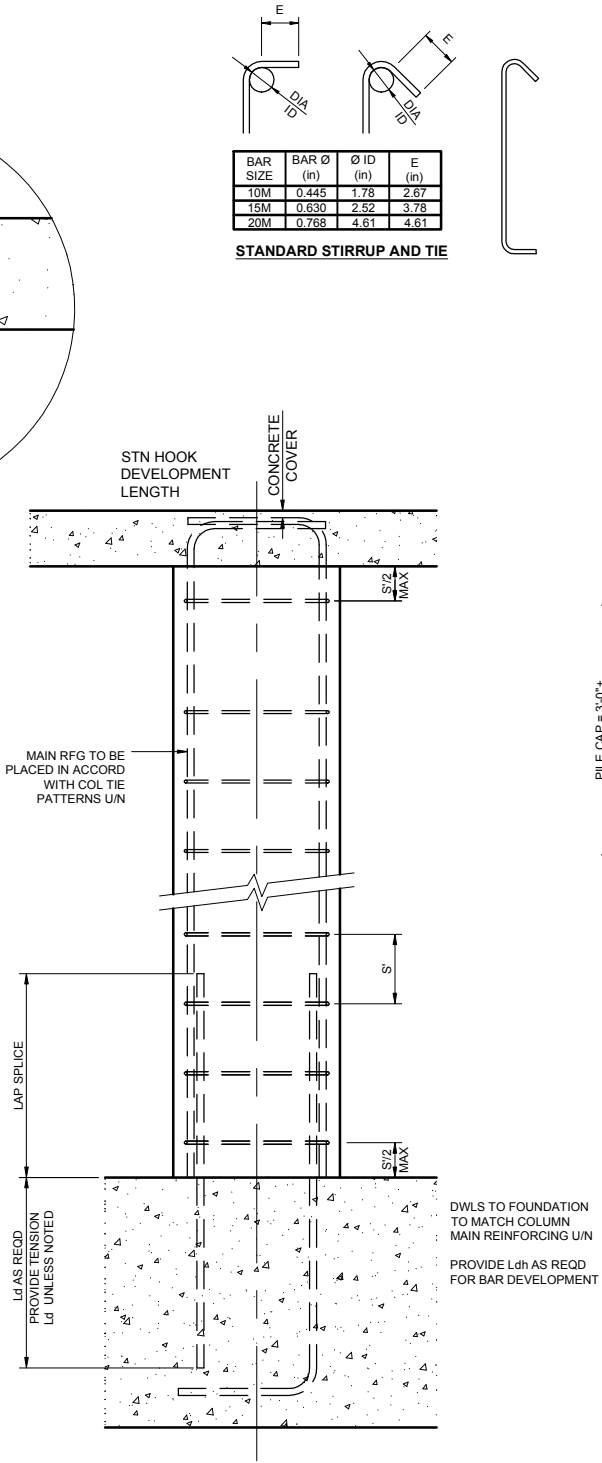
MAXIMUM COLUMN TIE SPACING
COLUMN TIE SPACING ('S') SHALL NOT EXCEED:
16x THE DIA OF THE SMALLEST MAIN RFG BAR,
48x THE DIA OF THE COLUMN TIE,
THE LEAST DIMENSION OF THE COLUMN, OR
12" IN COMP MEMBERS HAVING BUNDLED BARS



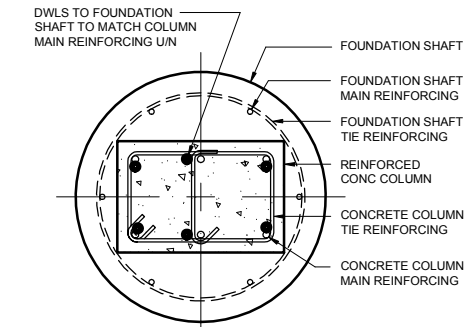
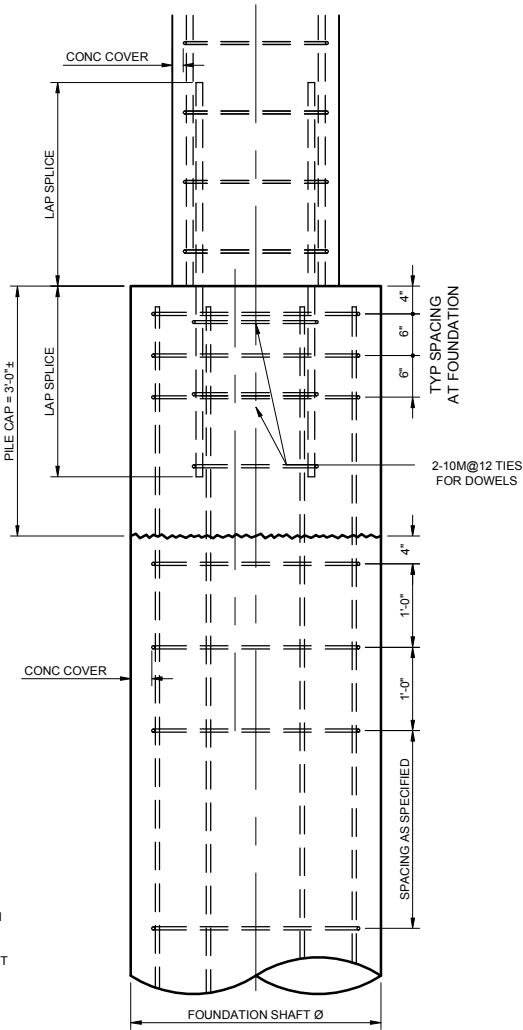
SPIRAL COLUMN ELEVATION



TYPICAL TIED COLUMN SPLICES



TYPICAL TIED COLUMN @ TOP



TYPICAL COLUMN TO FOUNDATION SHAFT INTERFACE

STANDARD STIRRUP AND TIE				
BAR SIZE	BAR Ø (in)	Ø ID (in)	E (in)	
10M	0.445	1.78	2.67	
15M	0.630	2.52	3.78	
20M	0.768	4.61	4.61	

FOUNDATION SHAFT REINFORCING		
SHAFT Ø (in)	TIE SPACING (in)	LONGITUDINAL RFG EQUALLY SPACED
16	-	6-15M19.8
20	10M@36	6-15M19.8
24	10M@36	6-15M19.8
30	10M@36	6-15M19.8
36	10M@36	6-20M19.8

NOTE
LATERAL SUPPORT FOR FOUNDATION SHAFT TO BE PROVIDED BY SOIL