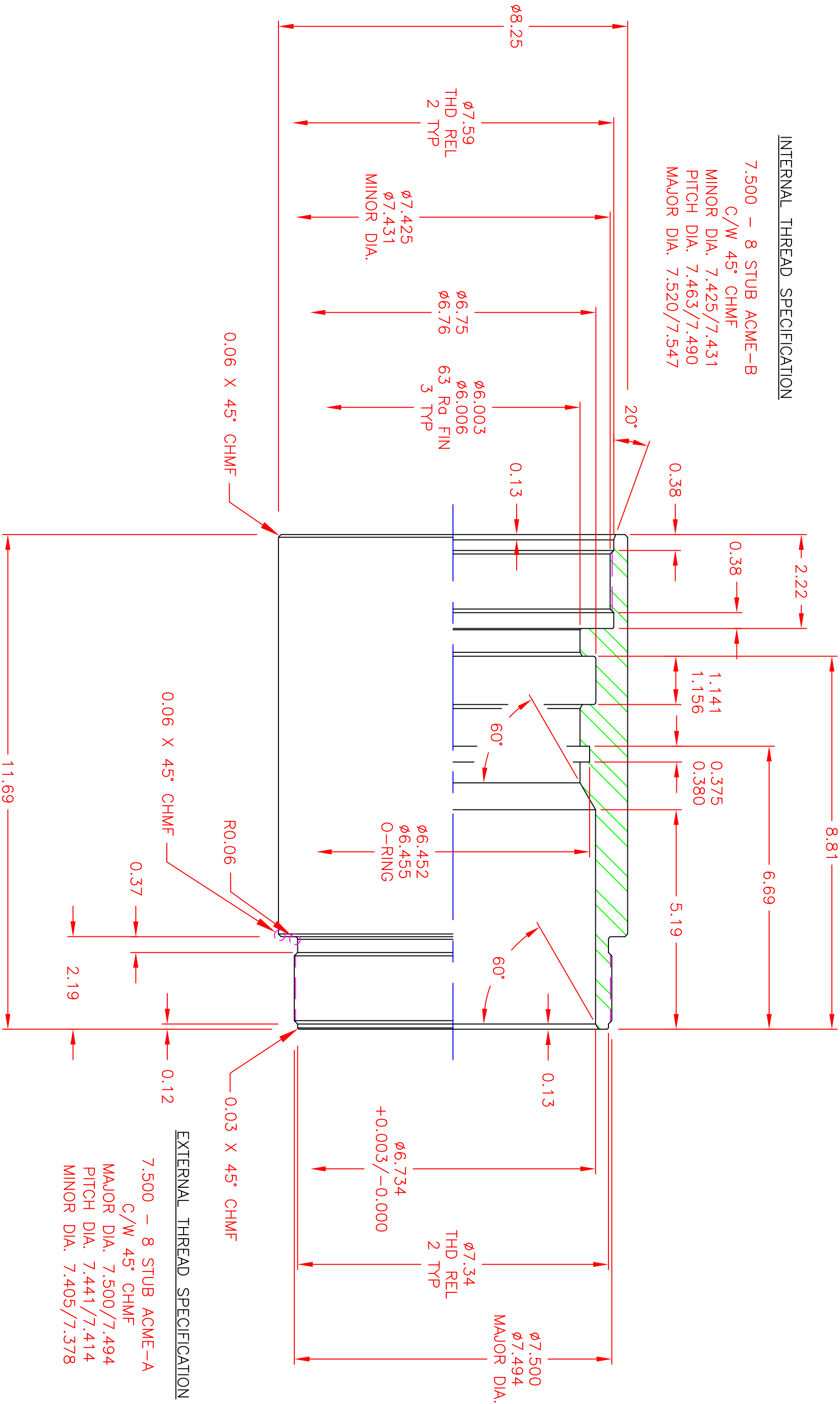



REVISIONS		
NO.	DESCRIPTION	DATE
1	INITIAL ISSUE	05 JUL 11
		BY K.H.

INTERNAL THREAD SPECIFICATION

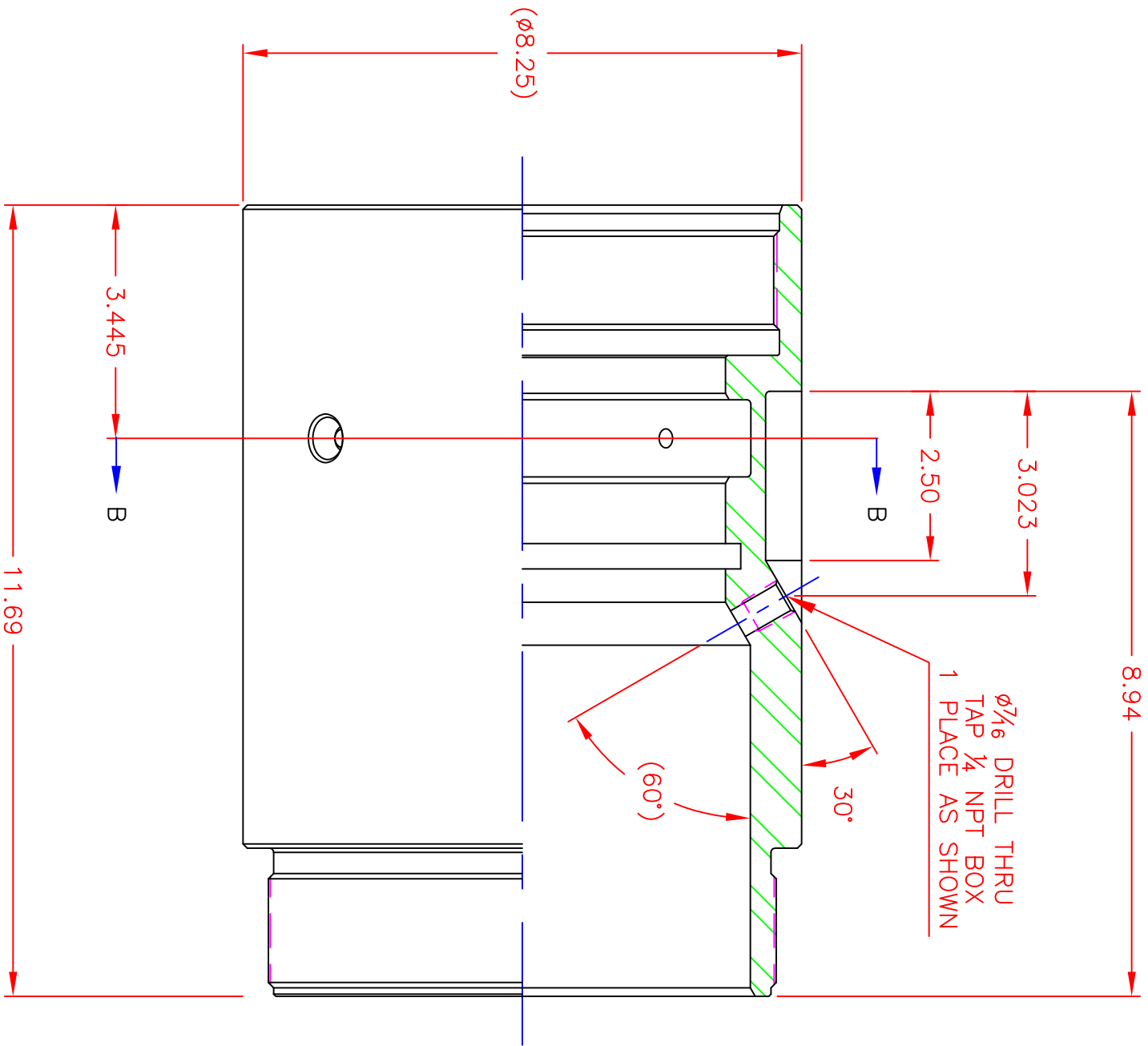
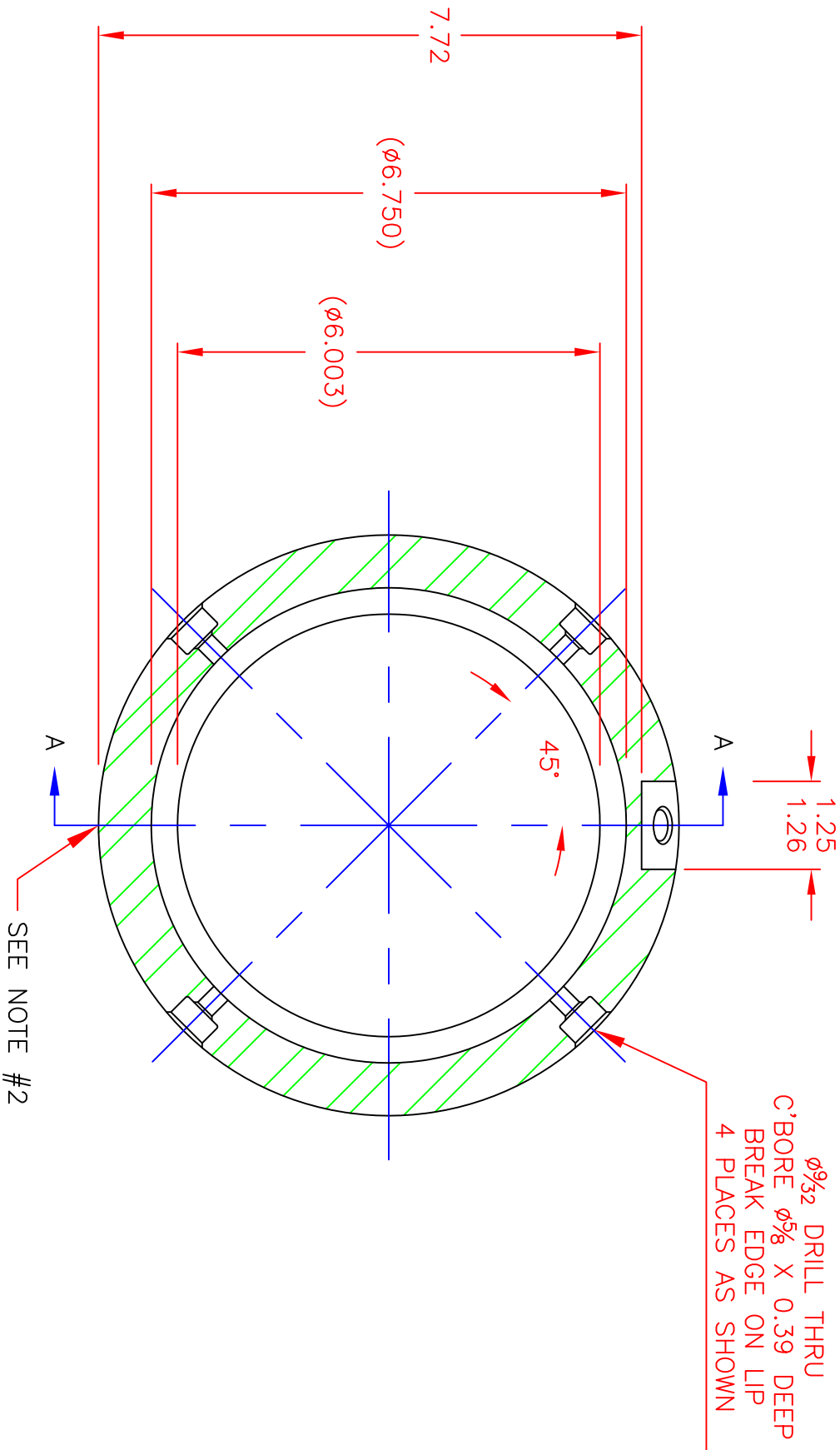
7.500 – 8 STUB ACME-B
C/W 45° CHMF
MINOR DIA. 7.425/7.431
PITCH DIA. 7.463/7.490
MAJOR DIA. 7.520/7.547




- NOTE:
- FOR USE WITH 2-436 O-RING, NO B/U's (1),
 - BREAK RAG EDGE ON FLANKS OF THREADING, INTERNAL & EXTERNAL,
 - 3 WIRE MEASURE: PITCH DIAMETER OVER $\phi 0.073$ WIRES (3) IS $\phi 7.536/7.563$,
 - UNLESS INDICATED OTHERWISE, BREAK ALL SHARP EDGES BY DEFAULT VALUES,
 - PG 1 REFERS TO TURNING DETAILS ONLY; SEE PG 2 FOR ADDITIONAL DETAIL,
 - DEBUR & BREAK SHARP EDGES.

SPECIFICATIONS UNLESS NOTED			CAD		FULL		 Sturni-Hueston Engineering Ltd Edmonton, Alberta Canada	PRESSURE SUB FOR ø7.000 X 23.0 lbf/ft SUB SURFACE SAFETY VALVE (TURNING DETAILS)	
1. TOLERANCE – CONCENTRICITY	±.005 – .005 T.I.R.	±.015 – .015 T.I.R.	SCALE	BY	DATE				
0. ANGULAR	±.030 – .030 T.I.R.			K.H.	05 JUL 11				
2. SURFACE FINISH – 125 Rg			ISS	K.H.	15 JUL 11				
3. BREAK EDGES – .03 X 45°			APP						
4. FILLETS – .03 R MAXIMUM									
5. DO NOT SCALE DRAWING.									
THE INFORMATION DISCLOSED ON THIS DOCUMENT IS THE EXCLUSIVE PROPERTY OF STURNI-HUESTON ENGINEERING LTD AND MUST BE TREATED AS CONFIDENTIAL MATERIAL. REPRODUCTION BY ANY MEANS IS STRICTLY PROHIBITED!									

REVISIONS			
NO.	DESCRIPTION	DATE	BY
1	INITIAL ISSUE	06 JUL 11	K.H.



SECTION A-A

SPECIFICATIONS UNLESS NOTED		MATERIAL		CAD SCALE		FULL		 Sturm-Hueston Engineering Ltd Edmonton, Alberta Canada	PRESSURE SUB	
1. TOLERANCE - CONCENTRICITY		AS PER DETAILS - PG 1		BY		DATE			FOR	
.000 ±.005 - .005 T.I.R.				DRN		K.H.			ø7.000 X 23.0 lbf/ft	
.000 ±.015 - .015 T.I.R.				ISS		K.H.			SUB SURFACE SAFETY VALVE	
.0 ANGULAR ±0.30° T.I.R.				APP					(MILL & DRILL DETAILS)	
2. SURFACE FINISH - 125 Rg		THE INFORMATION DISCLOSED ON THIS DOCUMENT IS THE EXCLUSIVE PROPERTY OF STURM-HUESTON ENGINEERING LTD AND MUST BE TREATED AS CONFIDENTIAL MATERIAL. REPRODUCTION BY ANY MEANS IS STRICTLY PROHIBITED.								
3. BREAK EDGES - .03 X 45°										
4. FILLETS - .03 R MAXIMUM										
5. DO NOT SCALE DRAWING.										
								DWG No. D-SSV1784631 pg 2 B		

- NOTE:
- FOR USE WITH ¹/₄ NPT X ø¹/₄ TUBE PRESSURE FITTING (1),
 - STAMP PART NUMBER, MATERIAL ID CODE & MANUFACTURER LOGO,
 - BREAK SHARP EDGES AS PER DEFAULT TABLE, UNLESS INDICATED OTHERWISE,
 - CASE HARDEN BY LIQUID NITRATION, 0.005/0.008 INCH DEPTH,
 - SEE PG 1 FOR MATERIAL SPECIFICATION & TURNING DETAIL,
 - DEBUR & BREAK SHARP EDGES.