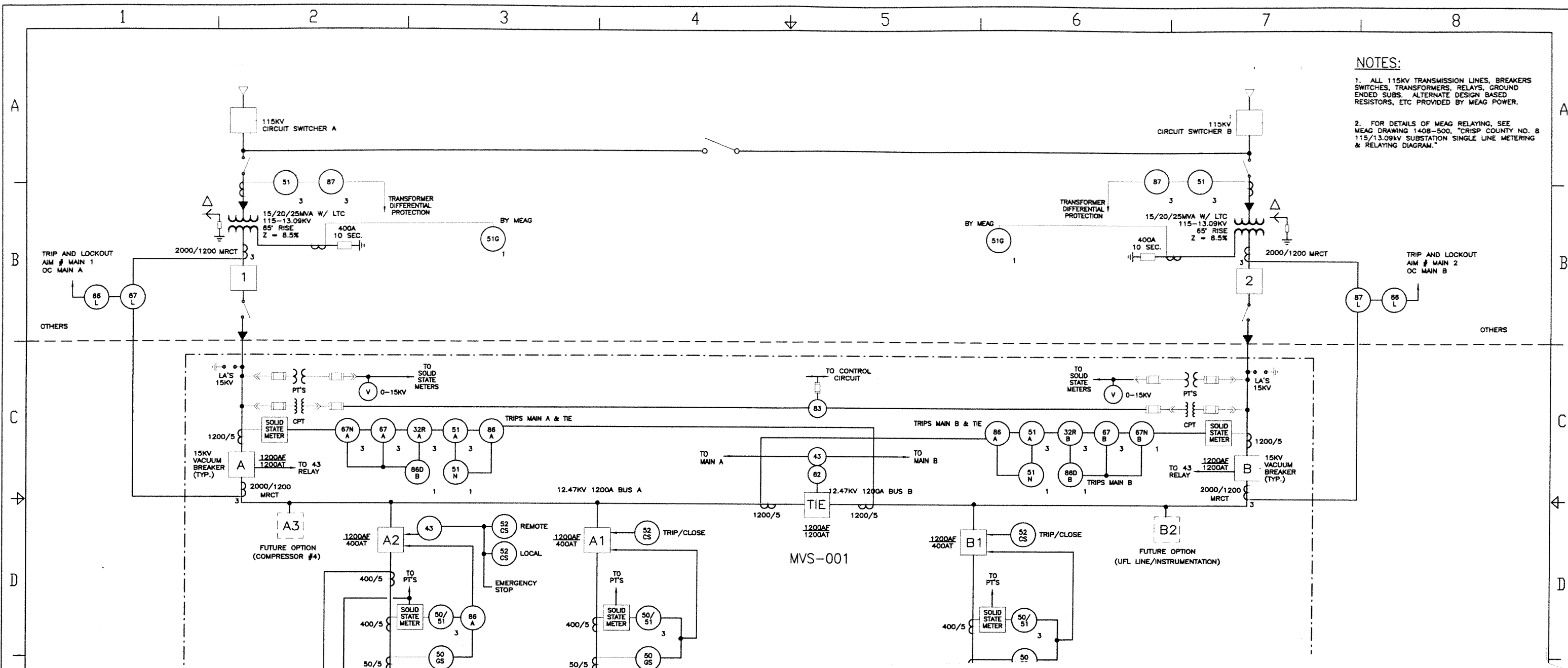


# NOTES:

1. ALL 115KV TRANSMISSION LINES, BREAKERS SWITCHES, TRANSFORMERS, RELAYS, GROUND ENDED SUBS. ALTERNATE DESIGN BASED RESISTORS, ETC PROVIDED BY MEAG POWER.

2. FOR DETAILS OF MEAG RELAYING, SEE MEAG DRAWING 1408-500, "CRISP COUNTY NO. 8 115/13.09KV SUBSTATION SINGLE LINE METERING & RELAYING DIAGRAM."



MVS-001