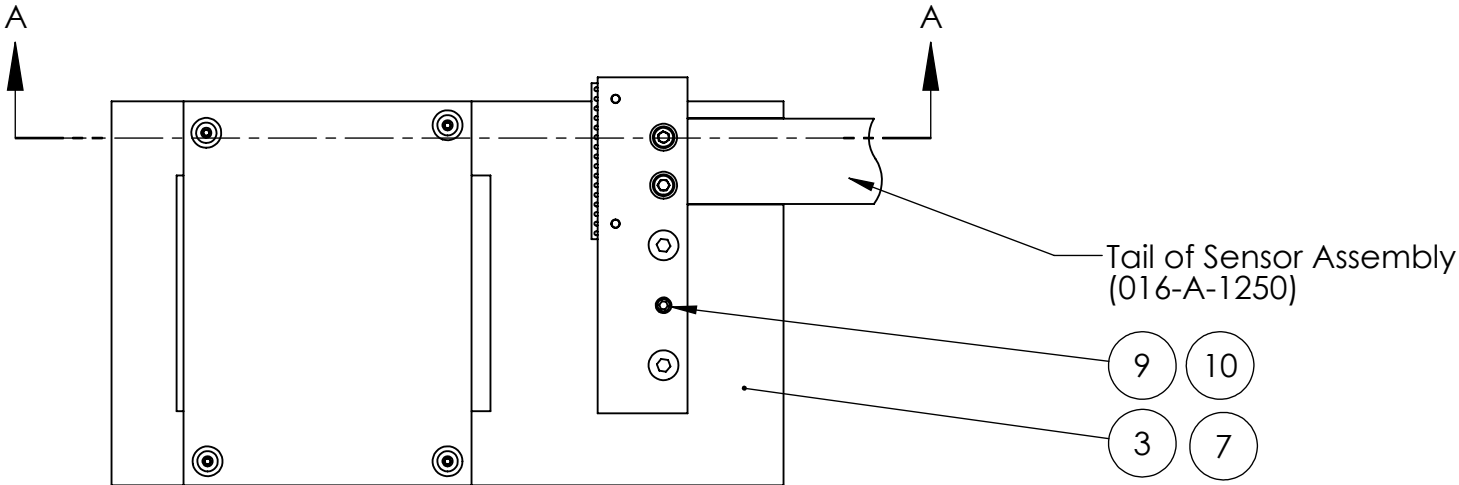
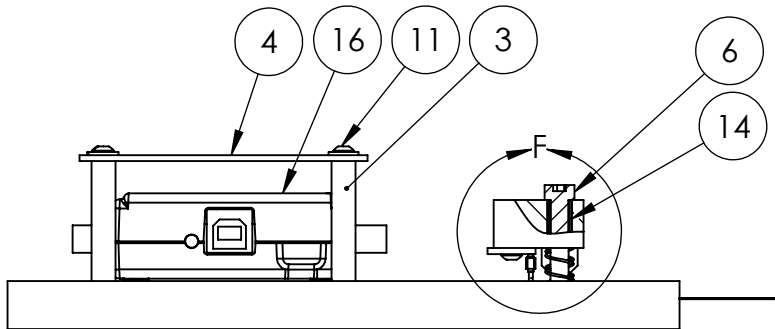


8 7 6 5 4 3 2 1

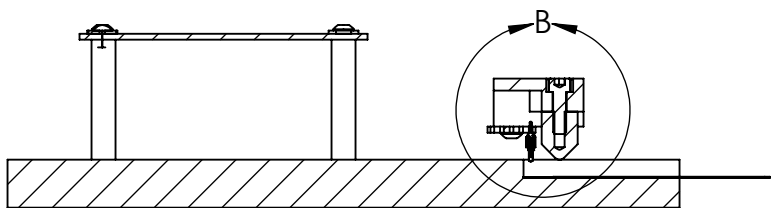
D



C

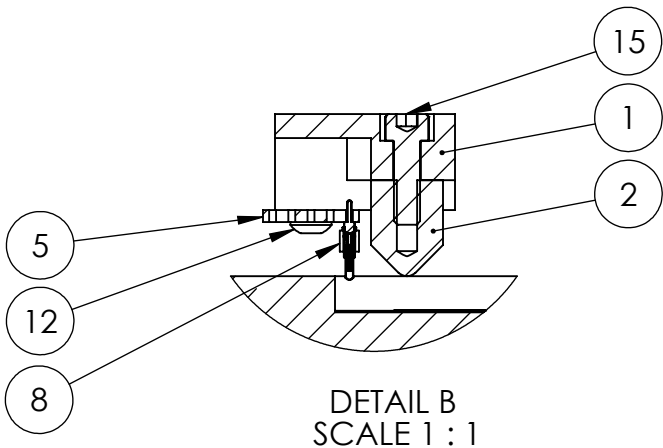


B



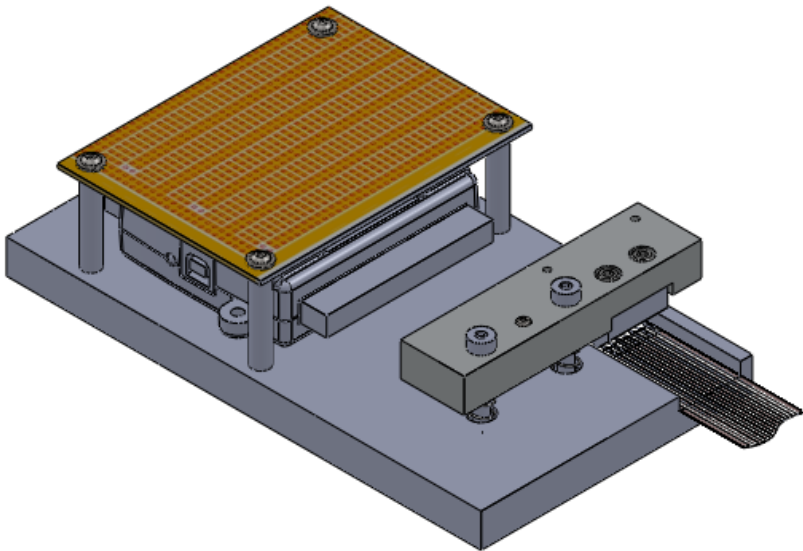
SECTION A-A

A




DETAIL B
SCALE 1 : 1

PROPRIETARY AND CONFIDENTIAL
THE INFORMATION CONTAINED IN THIS DRAWING IS THE SOLE PROPERTY OF <INSERT COMPANY NAME HERE>. ANY REPRODUCTION IN PART OR AS A WHOLE WITHOUT THE WRITTEN PERMISSION OF <INSERT COMPANY NAME HERE> IS PROHIBITED.



Item #	Description	Qty	Part #	Supplier
1	Plunger	1	016-A-4110	Simbex
2	Plunger Tip	1	016-A-4111	Simbex
3	Base	1	016-A-4120	Simbex
4	Circuit Board-OpAmps	1	016-A-4130	Simbex
5	Circuit Board-Plunger Connector	1	016-A-4131	Simbex
6	Shoulder Bolt Ø3/16" x 1.25 lg x #8-32	2	94035A209	McMaster
7	Spring .300"OD x .500" lg (1.89lb load)	2	9434K51	McMaster
8	Mill-Max Spring Plunger	1	0825-22-064-10-001101	Bisco
9	Set Screw #8-32 x 1/2" lg	1	94105A193	McMaster
10	Set Screw #8-32 x 3/16" lg	1	92313A189	McMaster
11	BHCS #4-40 x 3/16" lg w/FW	2	98164A063	McMaster
12	BHCS #4-40 x 3/8" lg	4	92949A105	McMaster
13	Standoff #4-40 x 1-1/4" lg	4	93620A437	McMaster
14	Bronze Sleeve Bearing Ø1/4" x Ø3/16 x 1/2"lg	2	9368T101	McMaster
15	SHCS #6-32 x 7/16 lg	1	92196A147	McMaster
16	USB DAQ	0	USB-6009	National Instruments

		UNLESS OTHERWISE SPECIFIED:		NAME	DATE	 10 Water St, Suite410 Lebanon, NH 03766 603.448.2367			
		DIMENSIONS ARE IN INCHES TOLERANCES: FRACTIONAL ± ANGULAR: MACH ± BEND ± TWO PLACE DECIMAL ± THREE PLACE DECIMAL ±	DRAWN	ELY	3/2/2011	TITLE: Test Rig: Sensor			
			CHECKED						
			ENG APPR.						
			MFG APPR.						
		INTERPRET GEOMETRIC TOLERANCING PER:	Q.A.						
		MATERIAL	COMMENTS:			SIZE DWG. NO. REV B DRW-016-A-4100-A A			
		FINISH							
NEXT ASSY	USED ON					SCALE: 1:2 WEIGHT: SHEET 1 OF 1			
APPLICATION		DO NOT SCALE DRAWING							

8 7 6 5 4 3 2 1