

FOOTING SCHEDULE		
MK.	SIZE	REINFORCING
W1	24"x12"	2-#5 CONT.
W2	27"x12"	2-#5 CONT.
W3	33"x12"	3-#5 CONT.
W4	36"x12"	3-#5 CONT. #5@12" O.C.
W5	39"x12"	3-#5 CONT. #5@12" O.C.
F1	3'-0"x3'-0"x12"	5-#4x2'-6" E.W.
F2	4'-0"x4'-0"x12"	9-#4x3'-6" E.W.
F3	5'-0"x5'-0"x12"	8-#5x4'-6" E.W.
F4	5'-6"x5'-6"x12"	9-#5x5'-0" E.W.
F5	6'-0"x6'-0"x12"	8-#6x5'-6" E.W.
F6	6'-6"x6'-6"x12"	9-#6x6'-0" E.W.

DESIGN LIVE LOADS	
CORRIDORS & STAIRWAYS	80 PSF
ALL OTHER FL. AREAS	40 PSF
MECH. ROOM	100 PSF
WIND	20/25/30 PSF
SNOW HIGH ROOF	30 PSF
SNOW LOW ROOF	90 PSF

DESIGN STRESSES	
CONCRETE (STRUCT. SLABS, BM's, & COL'S)	$f'_c = 4000 \text{ PSI}$
CONCRETE (ALL OTHER)	$f'_c = 3000 \text{ PSI}$
REINF. STEEL (MAIN)	$f_y = 60,000 \text{ PSI}$
REINF. STEEL (STIRRUPS, TIES)	$f_y = 40,000 \text{ PSI}$
STRUCT. STEEL	$f_y = 36,000 \text{ PSI}$
SOIL BEARING	$q_u = 4,000 \text{ PSF}$

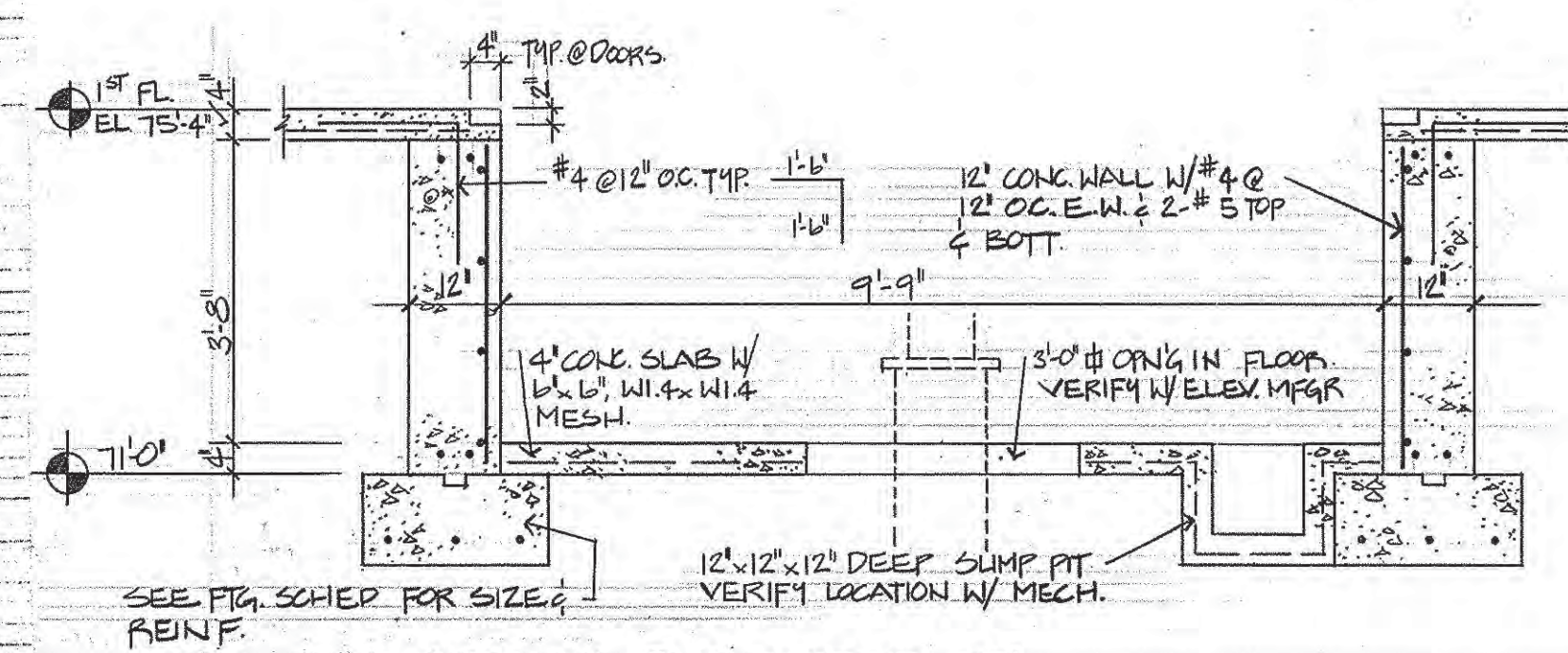
FOOTING NOTES

- WALL FOOTINGS SHALL EXTEND 1'-0" BEYOND END OF WALL W/ ADD'L #4x3'-0" @ 12" O.C. BOT. PARALLEL TO WALL.

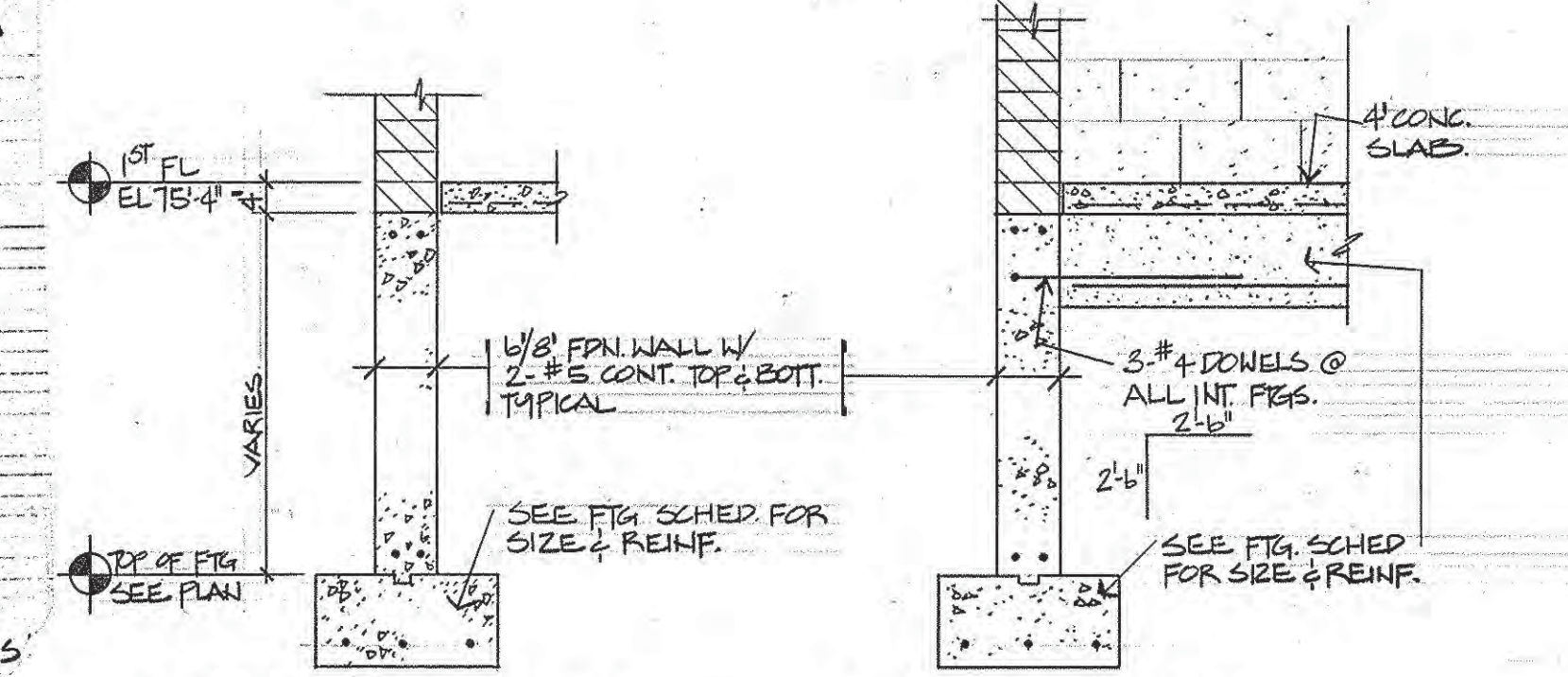
GENERAL NOTES

- ALL BRICK MASONRY UNITS AND BRICK MASONRY WORK SHALL CONFORM TO BUILDING CODE REQUIREMENTS FOR ENGINEERED BRICK MASONRY, PUB. BY STRUCTURAL CLAY PRODUCTS INSTITUTE, 1750 OLD MEADOW ROAD, PLEASANT, VIRGINIA 2201-0041, REV. 1961, WDC 1962, 02.
- ALL CONG. MAS. UNITS AND CONG. MAS. WORK SHALL CONFORM TO SPECIFICATIONS FOR THE DESIGN AND CONSTRUCTION OF LOAD BEARING CONG. MAS. PUB. BY NATIONAL CONG. MASONRY ASSOC., P.O. BOX 9185, ROSSLYN STATION, ARLINGTON, VIRGINIA, 22209, FEB. 1975.
- ALL BRICK & CONG. MASONRY SHALL BE LAID W/ FULL HEAD & BED JOINTS, AND ALL INTERIOR JOINTS THAT ARE DESIGNED TO RECEIVE MORTAR SHALL BE FILLED.
- STRENGTH OF MASONRY WALLS SHALL BE DETERMINED BY PRISM TESTS. SUBMIT TESTS TO ARCHITECT AND OBTAIN APPROVAL PRIOR TO BEGINNING MASONRY WORK. PRISM TESTS SHALL BE MADE DURING CONSTRUCTION AT THE DIRECTION OF THE ARCHITECT.
- SEE DETS. 1241555 FOR REQUIRED MASONRY WALL STRESSES.
- MECH. EQUIP. PADS SHALL BE 4" CONG. SLAB W/ 6"x6" W1.4xW1.4 MESH UNLESS OTHERWISE NOTED.
- REMOVE ALL FILL MATERIAL BEFORE COMPACTING SPECIAL FILL MATERIAL AND POURING FOUNDATIONS.
- SEE SOIL BORING REPORT BY SOIL EXPLORATION CO., ROCHESTER, MINN. (DATED APRIL 9, 1979) FOR DEPTHS OF FILL TO BE REMOVED.

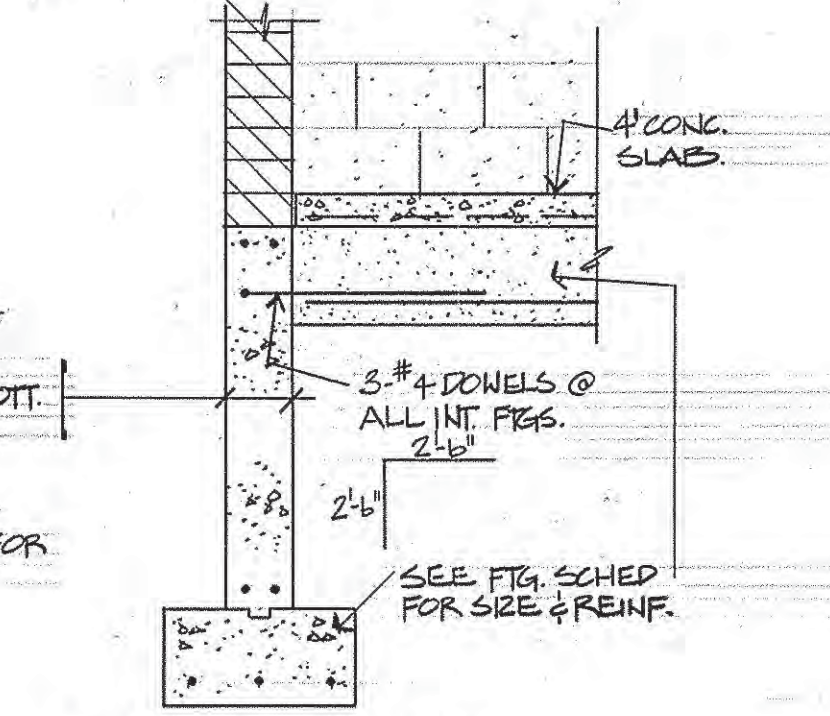
1 FOOTING & FOUNDATION PLAN



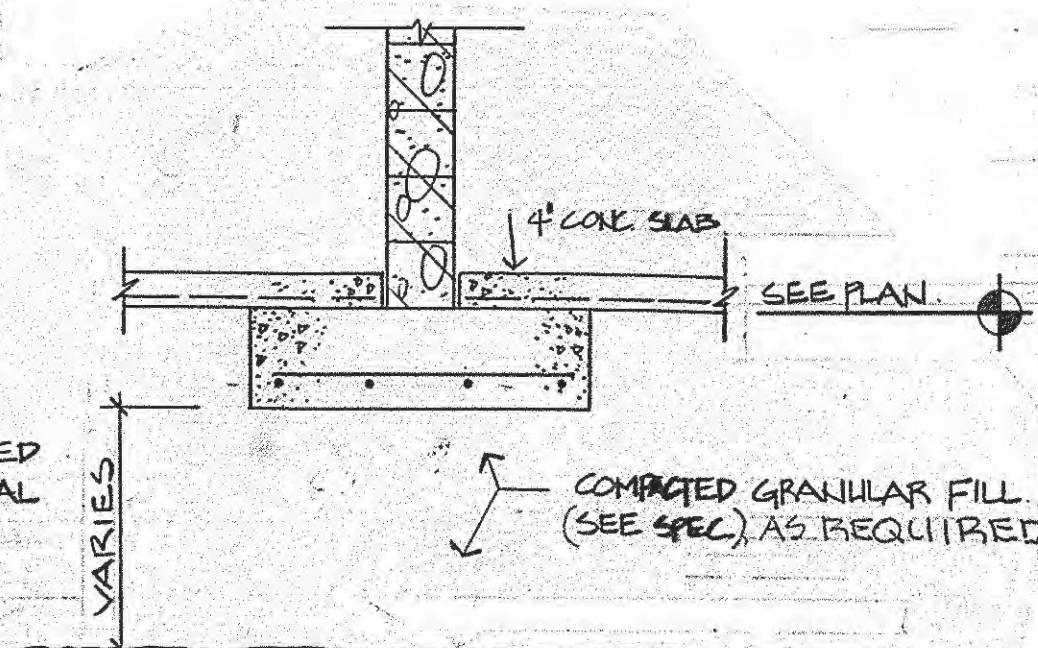
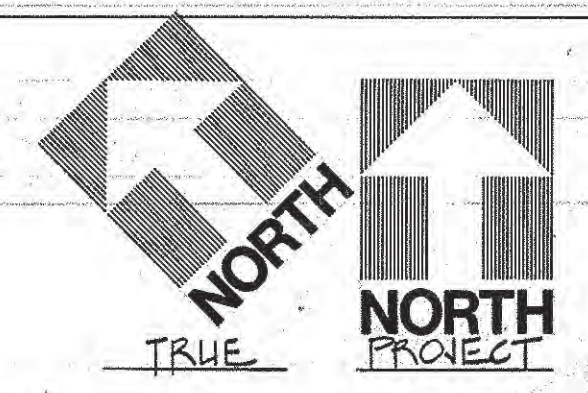
2 SECTION @ ELEVATOR PIT



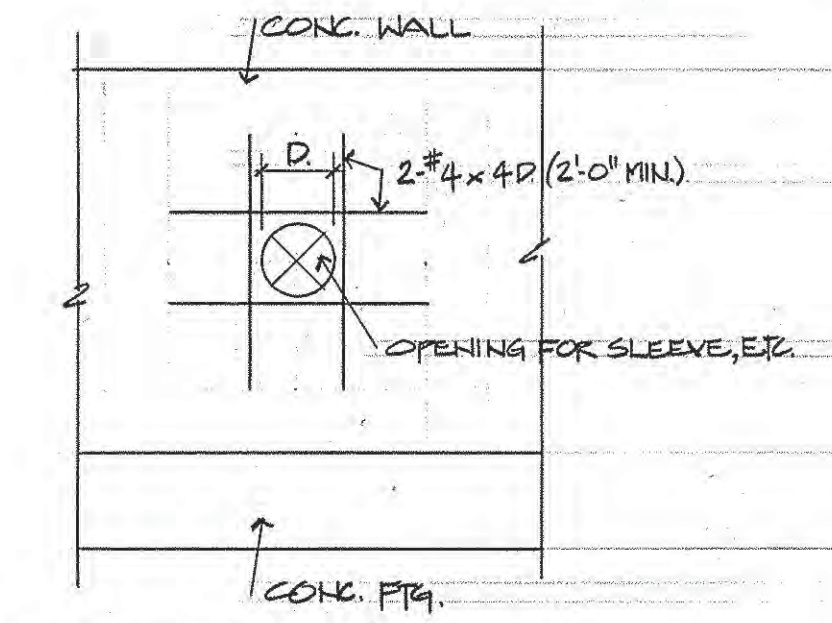
4 TYP 6" x 8" CONG. FDN. WALL



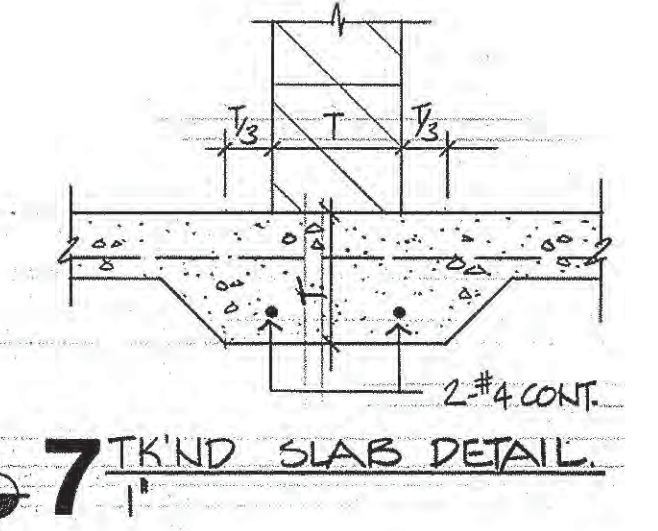
5 FTG. CONNECTION



3 INT. BRG. WALL/FTG.



6 REINF. DETAIL @ OPENING



7 TYP. 2" x 4" CONT. SLAB DETAIL