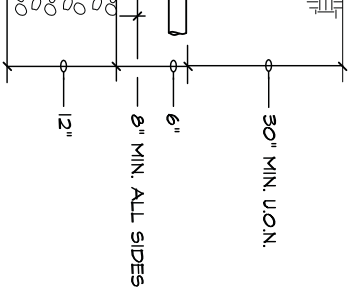


REINFORCED CONC. OR  
TRAFFIC RATED LID  
LABELED AS NOTED

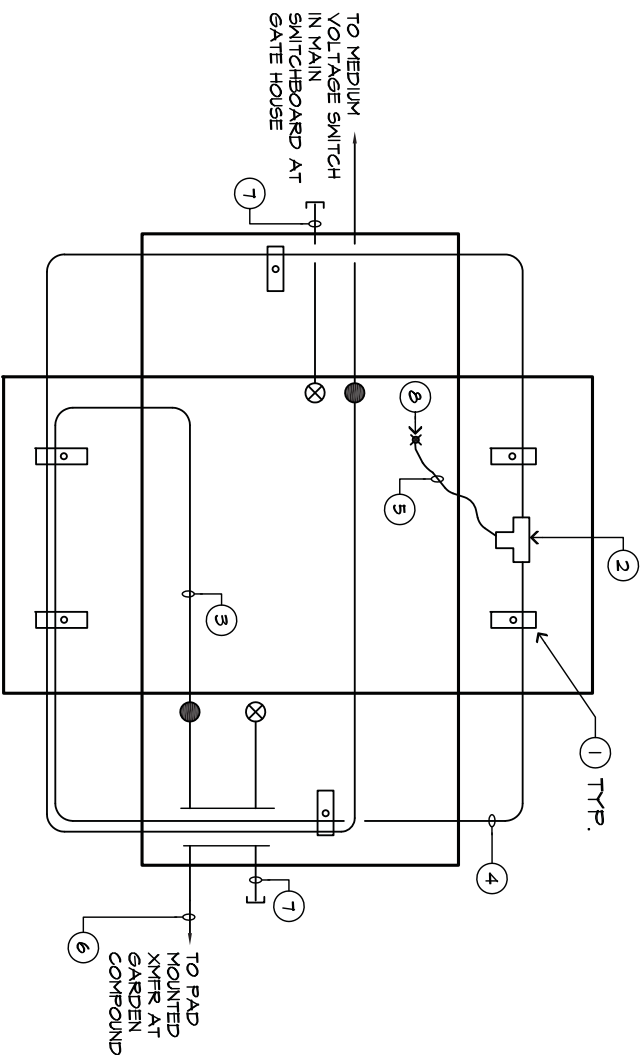


GR. AS NOTED

ALL

ELDED "GROUND ROD"

"#8" GROUND ROD



#### LEGEND

- ⊗ 5" C.O. SPARE
- CONDUIT & WIRE SEE E.L.I.O. FOR WIRE SIZE
- CONDUIT STUB OUT

#### DETAIL NOTES:

- 1 CABLE RACKS & SUPPORT ARMS ON THE SIDE OF VAULT.
- 2 CABLE TO CABLE CONNECTION WITH 600 AMP DEAD BREAK ELBOW CONNECTORS AND CONNECTING PLUGS.
- 3 SLACK 12 KV CABLES LOOP AROUND THE VAULT (5' MINIMUM LENGTH).
- 4 PROVIDE PHASE AND VOLTAGE TAG FOR EACH CABLE
- 5 PROVIDE #2 AWG BARE COPPER SOLID GROUND WIRE FOR CABLE GROUNDING AND CABLE SHIELD GROUNDING.
- 6 SEE E.L.I.O. FOR CONDUIT AND WIRE SIZE
- 7 5" C.O. SPARE WITH PULLROPE AND TRUE TAPE
- 8 3/8" Ø x 10' COPPER CLAD GROUND ROD AND GROUND CLAMP.
- 9 VAULT COVER PLATE/LID SHALL BE LABELED "HIGH VOLTAGE".

### PRIMARY VAULT DETAIL, VAULT 3'X5'X5'

NO SCALE

3