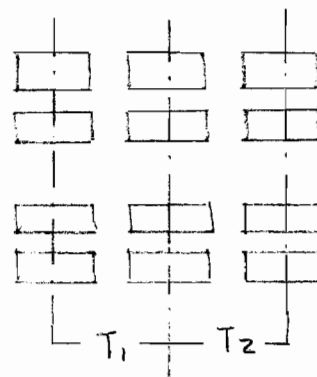
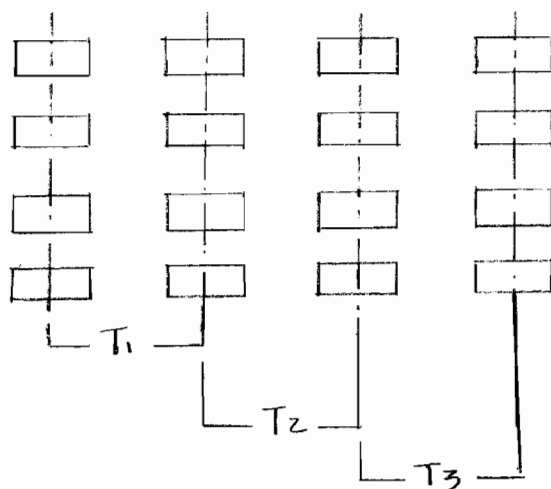


TYPICAL QUAD CONFIGURATION

W/W



| KDT-1        | AXLE LOAD | ESAL EQUIV (T)*   | T <sub>1</sub> + T <sub>2</sub> + T <sub>3</sub> |
|--------------|-----------|-------------------|--|
| REAR QUAD    | 41K       | 43.7(1.37) = 59.9 | 180  |
| FRONT QUAD   | 41K       | 43.7(1.37) = 59.9 | 180  |
|              |           |                   | <u>360</u>                                       |
| KDT-2        |           |                   |  |
| REAR QUAD    | 49.6K     | 125(1.37) = 171   | 513  |
| FRONT QUAD   | 34.9K     | 20.6(1.37) = 28.2 | 85   |
|              |           |                   | <u>598</u>                                       |
| A-0          |           |                   |  |
| REAR TRIDEM  | 51.7K     | 184(1.37) = 251   | 503  |
| FRONT TRIDEM | 21.1K     | 2.02(1.37) = 2.76 | 6  |
|              |           |                   | <u>509</u>                                       |

\* Using Single-to-tandem factor of 1.37 from AASHTO Equivalence Factor tables, then "pairing" the tandems for total equivalence (Using SN = 2.0)