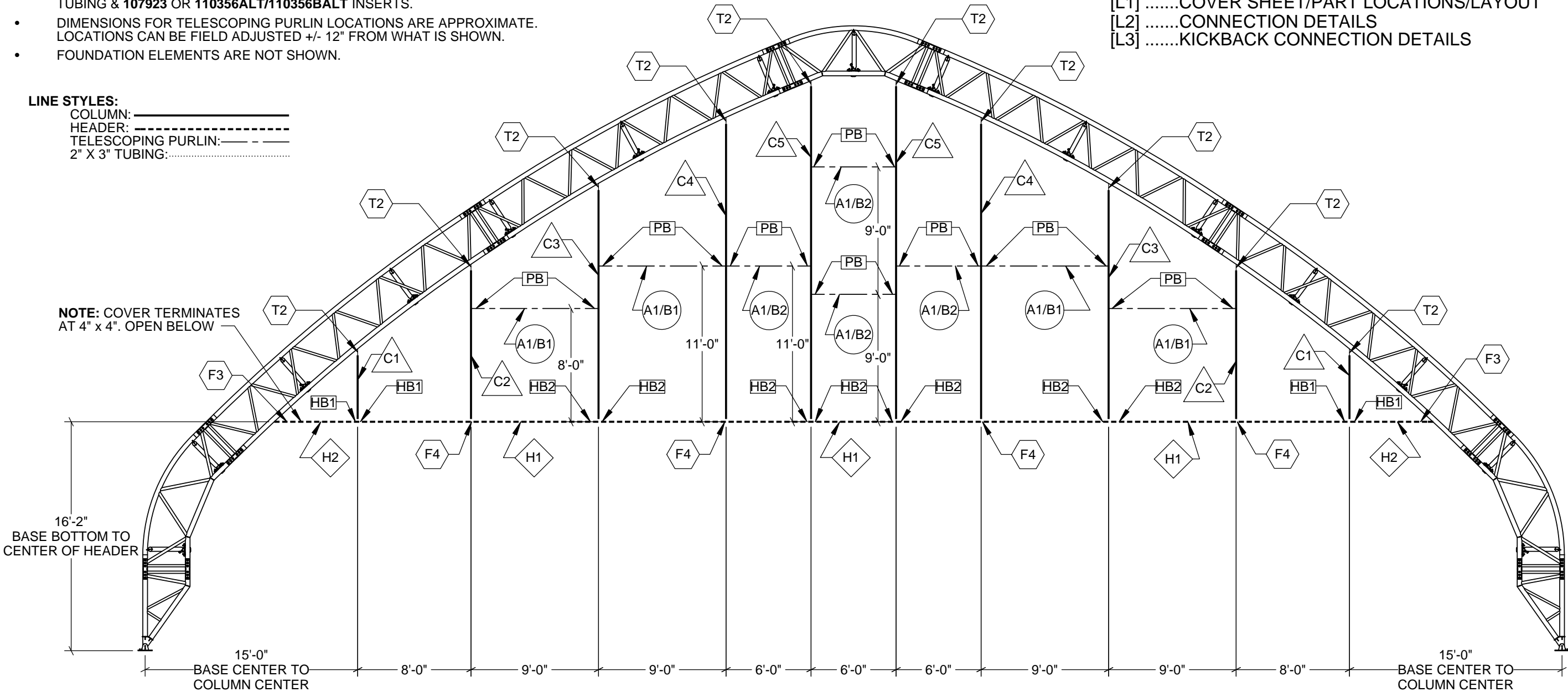


NOTES:

- ALL DIMENSIONS ARE FROM CENTER TO CENTER UNLESS OTHERWISE NOTED.
- FRAMING FOR WALK DOORS, VENTS, AND ADDITIONAL FRAMING, IF REQUIRED, WILL BE CUT IN FIELD USING 2" X 3" RECTANGULAR TUBING & 107923 OR 110356ALT/110356BALT INSERTS.
- DIMENSIONS FOR TELESCOPING PURLIN LOCATIONS ARE APPROXIMATE. LOCATIONS CAN BE FIELD ADJUSTED +/- 12" FROM WHAT IS SHOWN.
- FOUNDATION ELEMENTS ARE NOT SHOWN.

LINE STYLES:  
COLUMN: \_\_\_\_\_  
HEADER: \_\_\_\_\_  
TELESCOPING PURLIN: \_\_\_\_\_  
2" X 3" TUBING: \_\_\_\_\_

NOTE: COVER TERMINATES AT 4" X 4". OPEN BELOW



ENDWALL CONTENT GUIDE:

- [L1] .....COVER SHEET/PART LOCATIONS/LAYOUT  
[L2] .....CONNECTION DETAILS  
[L3] .....KICKBACK CONNECTION DETAILS

EW100GBF0400D

DEVELOPED BY

  
A DIVISION OF  
ENGINEERING SERVICES & PRODUCTS CO.  
1440 18TH AVENUE SW  
DYERSVILLE, IA 52040  
P: 563.875.6113  
F: 563.875.2317  
WWW.ESAPCO.COM

ORDER #:

7254927

CUSTOMER #:

6503439

STRUCTURE SKU #

EW100GBF0400D

STRUCTURE SIZE:

100' X 80'

STRUCTURE DESCRIPTION:

CUSTOMER INFORMATION:

CHRIS CRAFT BOATS  
8161 15TH ST SE  
SARASOTA, FL 34237-2709

CONTACT PHONE:

941-358-3751

CUSTOMER CONTACT:

MATT MCGINNIS

SHEET TITLE:

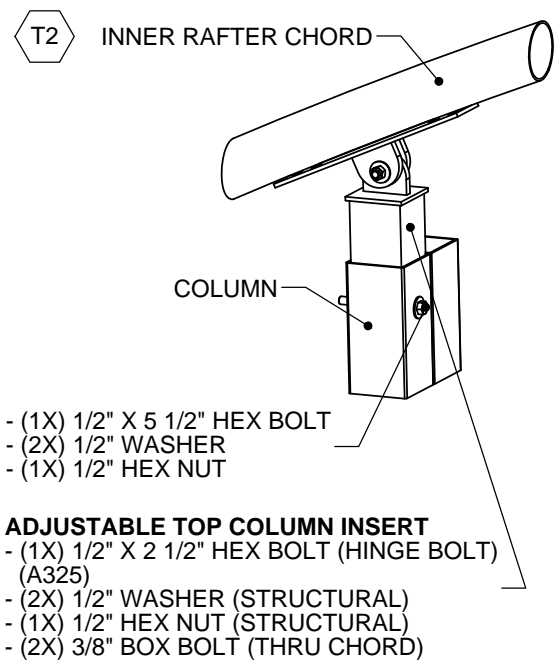
COVER SHEET/PART LOCATIONS/LAYOUT

<div>△ COLUMNS</div> <div>4" X 4", 8 GA, 1-PLY SQUARE TUBE</div> <div>C1: EWM1P054G08</div> <div>C2: EWM1P126G08</div> <div>4" X 4", 13 GA, 2-PLY SQUARE TUBE</div> <div>C3: EWM2P194G13</div> <div>4" X 4", 8 GA, 2-PLY SQUARE TUBE</div> <div>C4: EWM2P250G08</div> <div>C5: EWM2P282G08</div>	<div>◇ HEADERS</div> <div>4" X 4", 8 GA, 2-PLY SQUARE TUBE</div> <div>H1: EV2P211G08</div> <div>H2: EV2P159G08</div>	<div>○ TELESCOPING PURLINS</div> <div>2.0" OD, 11 GA ROUND PIPE</div> <div>A1: 200TP050</div> <div>2.375" OD, 14 GA ROUND PIPE</div> <div>B1: 2375TP085</div> <div>B2: 2375TP050</div>	<div>⬡ INSERTS</div> <div>TOP COLUMN INSERTS</div> <div>(3.5" SQ. TUBE / 3/16" STEEL PLATE)</div> <div>T2: 108151SA/108151SB</div> <div>BOTTOM COLUMN INSERTS</div> <div>(3.5" SQ. TUBE / 3/8" STEEL PLATE)</div> <div>F3: 110904C40/108151SB</div> <div>F4: 108802</div>	<div>□ BRACKETS</div> <div>PURLIN BRACKET (1/8" STEEL PLATE)</div> <div>PB: 106755</div> <div>HEADER BRACKET (3/16" STEEL PLATE)</div> <div>HB1: EWHB1P</div> <div>HB2: EWHB2P</div>
--	--	--	---	--

DRAWING DETAILS			
DRAWN BY: SMN		CREATION DATE: 1/5/2017	
REVISIONS:			
NO.	BY:	REVISION DATE:	
1			
2			
3			
4			
NOT TO SCALE		SHEET SIZE: 11X17	
SHEET:			
L1			

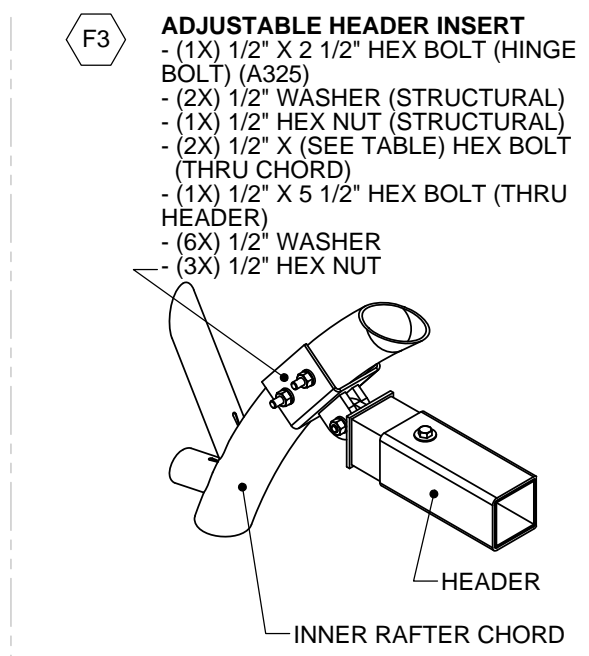
CUSTOMER INFORMATION: <b>CHRIS CRAFT BOATS</b> 8161 15TH ST E SARASOTA, FL 34243-2709		STRUCTURE SKU #: <b>EW100GBF0400D</b>
CUSTOMER CONTACT: <b>MATT MCGINNIS</b>	CONTACT PHONE: <b>941-358-3751</b>	STRUCTURE SIZE: <b>100' X 80'</b>
SHEET TITLE: <b>CONNECTION DETAILS</b>		STRUCTURE DESCRIPTION: <b>1</b>

DRAWING DETAILS			
DRAWN BY: SMN		CREATION DATE: 1/5/2017	
REVISIONS:			
NO.	BY:	REVISION DATE:	
1			
2			
3			
4			
NOT TO SCALE		SHEET SIZE: 11X17	
SHEET:			
L2			



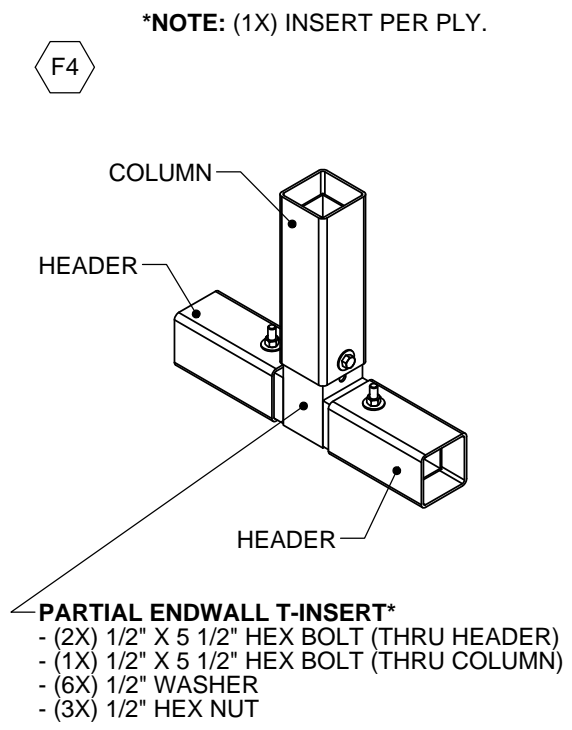
VIEW 1: NOT USED

VIEW 2: ADJUSTABLE TOP COLUMN INSERT DETAIL

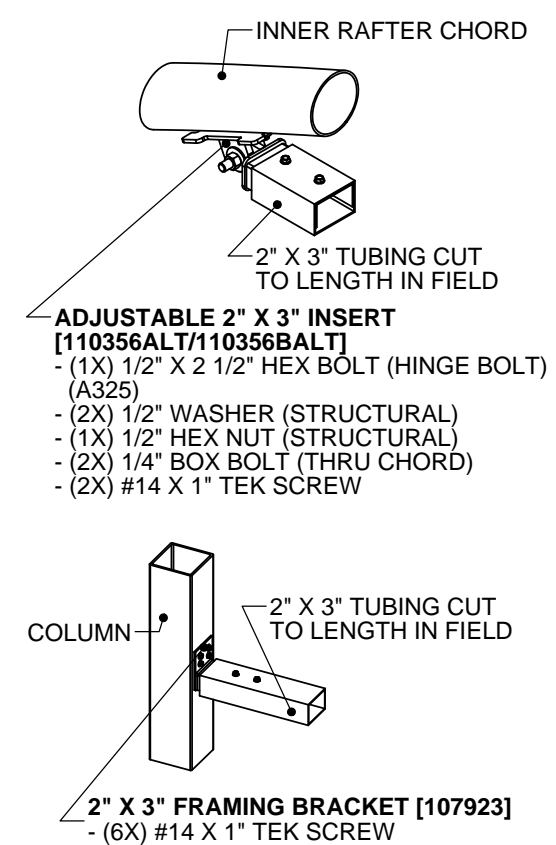


HEX BOLT LENGTH BASED ON CHORD DIA.	
CHORD DIA.	HEX BOLT LENGTH
2.375"	3 1/2"
3.50"	5"
4.0"	5 1/2"
5.0"	6 1/2"

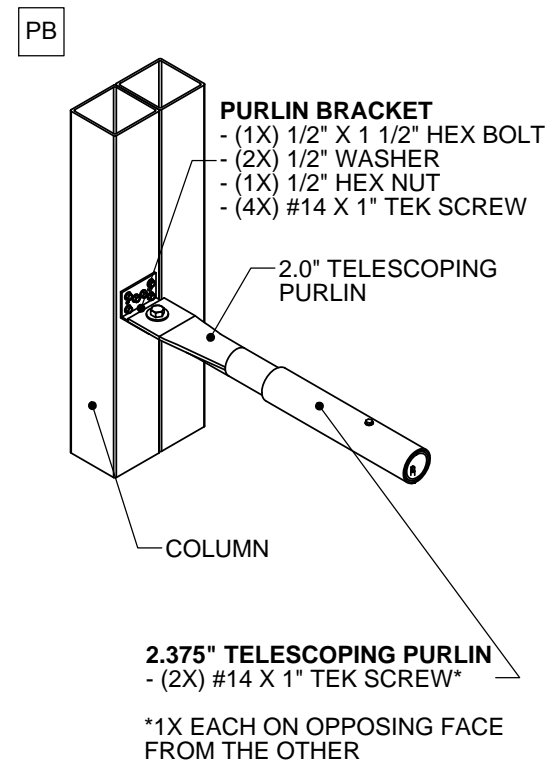
VIEW 3: ADJUSTABLE HEADER INSERT DETAIL



VIEW 4: PARTIAL ENDWALL COLUMN T-INSERT DETAIL

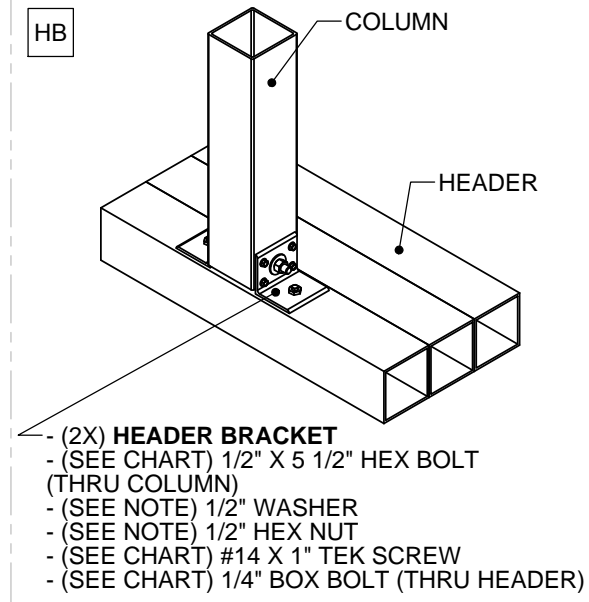


VIEW 5: 2" X 3" INSERT DETAILS



VIEW 6: NOT USED

VIEW 7: PURLIN BRACKET DETAIL



**NOTE:** EVERY BOLT WILL GET (2) WASHERS AND (1) HEX NUT. SEE CHART FOR # OF BOLTS.

BRACKET SKU	# OF BOLTS	# OF TEK SCREWS	# OF BOX BOLTS
EWHB1P	1	4	2
EWHB2P	2	8	4
EWHB3P	3	8	6

VIEW 8: ABOVE HEADER BRACKET DETAIL

BOX BOLT HOLE SIZES & INSTALLATION TORQUE		
BOX BOLT DIA.	HOLE DIA.	INSTALLATION TORQUE
1/4"	1/2"	14 FT-LB
5/16"	5/8"	18 FT-LB
3/8"	3/4"	33 FT-LB
1/2"	13/16"	59 FT-LB
5/8"	1 1/8"	140 FT-LB
3/4"	1 3/8"	221 FT-LB
1. REFER TO BOX BOLT TECHNICAL DATA FOR MORE INFORMATION IF USING BOX BOLTS		

**EBCC400UP** (5/16" & 1/2" STEEL PLATE)

- (2X) 1/2" U-BOLT
- (4X) 1/2" WASHER
- (4X) 1/2" HEX NUT
- (1X) 1/2" X 2 1/2" HEX BOLT (HINGE BOLT) (A325)
- (2X) 1/2" WASHER (STRUCTURAL)
- (1X) 1/2" HEX NUT (STRUCTURAL)
- (2X) #14 X 1" TEK SCREW

**EBTP350G14S002**

- (3.5" OD, 14 GA, ROUND PIPE)
- (2X) 1/2" X 5 1/2" HEX BOLT
- (4X) 1/2" WASHER
- (2X) 1/2" HEX NUT
- (2X) #14 X 1" TEK SCREW

**A** **400P230G12** (4.0" OD, 12 GA, ROUND PIPE)

**NOTE:** USE (2X) #14 X 1" TEK SCREWS FOR TEMPORARILY HOLDING KICKBACK POSITION.

**VIEW 1: KICKBACK CONNECTION DETAILS AT INTERIOR TRUSS (4.0")**

**A** **400P230G12** (4.0" OD, 12 GA, ROUND PIPE)

**EBCT350LP** (3.5" OD, 14 GA, ROUND PIPE)

- (2X) 1/2" X 5 1/2" HEX BOLT
- (4X) 1/2" WASHER
- (2X) 1/2" HEX NUT
- (1X) 1/2" X 2 1/2" HEX BOLT (HINGE BOLT) (A325)
- (2X) 1/2" WASHER (STRUCTURAL)
- (1X) 1/2" HEX NUT (STRUCTURAL)

- EBLB400SQ** (1/4" & 1/2" STEEL PLATE)
- (2X) 1/2" X 5 1/2" HEX BOLT
- (4X) 1/2" WASHER
- (2X) 1/2" HEX NUT

**VIEW 3: KICKBACK CONNECTION DETAILS AT COLUMN (4.0")**

**EBCC400UP** (5/16" & 1/2" STEEL PLATE)

- (2X) 1/2" U-BOLT
- (4X) 1/2" WASHER
- (4X) 1/2" HEX NUT
- (1X) 1/2" X 2 1/2" HEX BOLT (HINGE BOLT) (A325)
- (2X) 1/2" WASHER (STRUCTURAL)
- (1X) 1/2" HEX NUT (STRUCTURAL)
- (2X) #14 X 1" TEK SCREW

**EBTP400G12S001**

- (4.0" OD, 12 GA, ROUND PIPE)
- (2X) 1/2" X 5 1/2" HEX BOLT
- (4X) 1/2" WASHER
- (2X) 1/2" HEX NUT
- (2X) #14 X 1" TEK SCREW

**B** **350P125G14** (3.5" OD, 14 GA, ROUND PIPE)

**NOTE:** USE (2X) #14 X 1" TEK SCREWS FOR TEMPORARILY HOLDING KICKBACK POSITION.

**VIEW 2: KICKBACK CONNECTION DETAILS AT INTERIOR TRUSS (3.5")**

**B** **350P125G14** (3.5" OD, 14 GA, ROUND PIPE)

**EBCT400LP** (4.0" OD, 12 GA, ROUND PIPE)

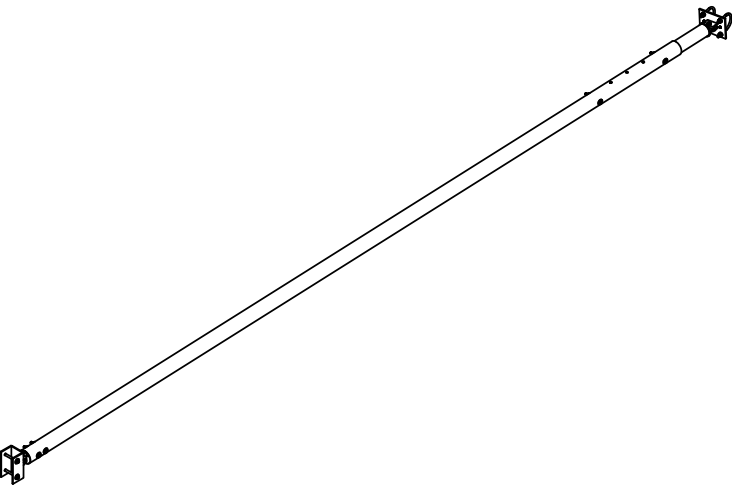
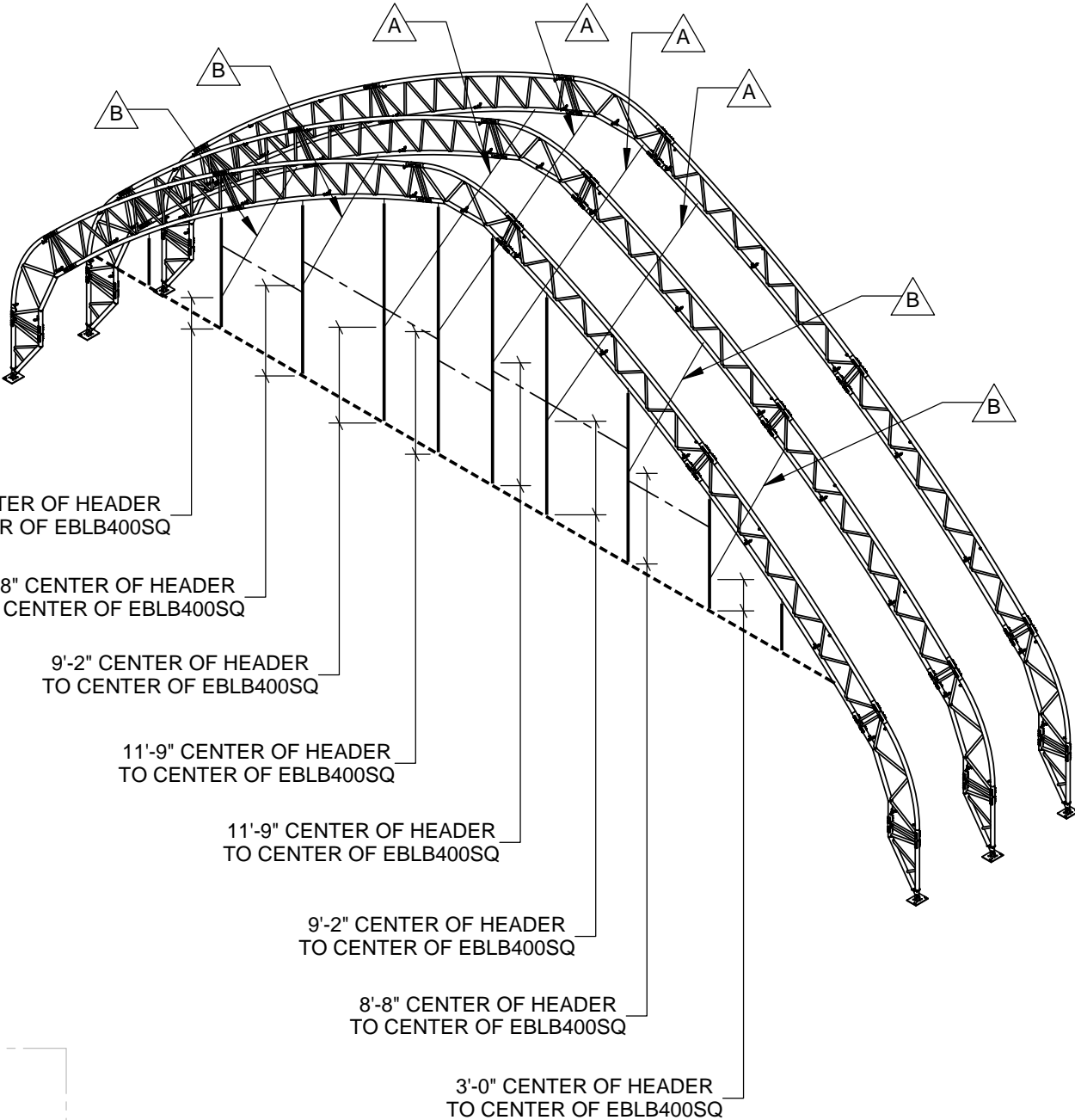
- (2X) 1/2" X 5 1/2" HEX BOLT
- (4X) 1/2" WASHER
- (2X) 1/2" HEX NUT
- (1X) 1/2" X 2 1/2" HEX BOLT (HINGE BOLT) (A325)
- (2X) 1/2" WASHER (STRUCTURAL)
- (1X) 1/2" HEX NUT (STRUCTURAL)

**EBLB400SQ** (1/4" & 1/2" STEEL PLATE)

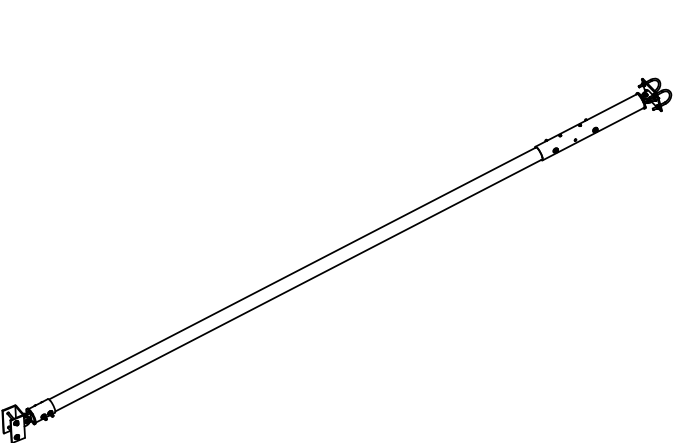
- (2X) 1/2" X 5 1/2" HEX BOLT
- (4X) 1/2" WASHER
- (2X) 1/2" HEX NUT

**VIEW 4: KICKBACK CONNECTION DETAILS AT COLUMN (3.5")**

**NOTE:** LATERAL AND ANGLED BRACES NOT SHOWN FOR CLARITY.



**VIEW 5: TYPICAL KICKBACK ASSEMBLY (4.0")**



**VIEW 6: TYPICAL KICKBACK ASSEMBLY (3.5")**

DEVELOPED BY

  
A DIVISION OF  
ENGINEERING SERVICES & PRODUCTS CO.  
1440 18TH AVENUE SW  
DYERSVILLE, IA 52040  
P: 563.875.6113  
F: 563.875.2317  
WWW.ESAPCO.COM

ORDER #:

7254927

CUSTOMER #:

6503439

CUSTOMER INFORMATION: <b>CHRIS CRAFT BOATS</b> 8161 15TH ST E SARASOTA, FL 34237-709	STRUCTURE SKU #: <b>EW100GBF0400D</b>	STRUCTURE SIZE: <b>100' X 80'</b>	STRUCTURE DESCRIPTION: <b>KICKBACK CONNECTION DETAILS</b>
	CONTACT PHONE: <b>941-358-3751</b>	CUSTOMER CONTACT: <b>MATT MCGINNIS</b>	

DRAWING DETAILS		
DRAWN BY: SMN		CREATION DATE: 1/5/2017
REVISIONS:		
NO.	BY:	REVISION DATE:
1		
2		
3		
4		
NOT TO SCALE		SHEET SIZE: 11X17
SHEET:		