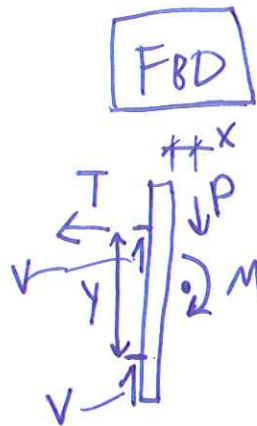


$x \approx \frac{2}{3}$  ANGLE LEG (CONSERVATIVE ASSUMPTION, OTHER METHODS OF CALC.)

$$M = P \cdot x$$



ASSUME TOP FASTENERS/REBAR CARRY ALL TENSION +  $\frac{1}{2} \cdot P$  (SHEAR):

SHEAR:  $P = 2 \cdot V$  or  $V = \frac{1}{2} P$

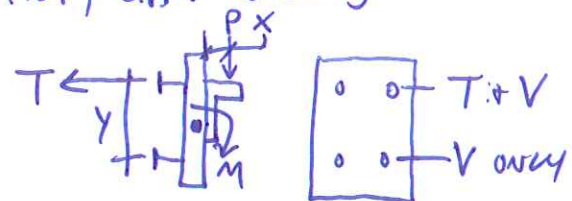
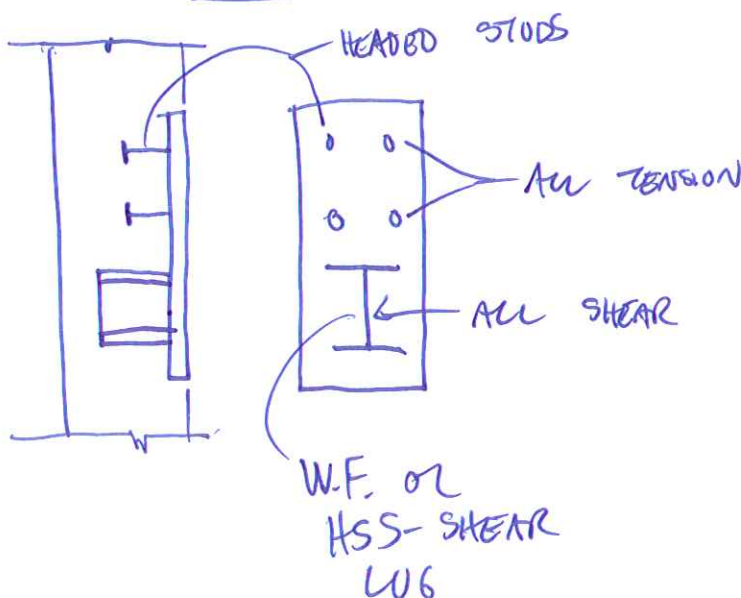
TENSION:  $T \cdot y = M$ ,  $T = \frac{M}{y}$

SO - TOP FASTENERS/REBAR ARE CRITICAL - SHEAR + TENSION:

$$T = \frac{M}{y} + V = \frac{1}{2} \cdot P$$

OTHER COMMON DETAILS I'VE USED:

(TILP, C.P. CONC.)



$$P \cdot x = T \cdot y$$

HIGH LOADS