

SAMPLE PROBLEM

Point in question: S = 12 ft H = 6 ft

$$q = \frac{80,000 \text{ lbs}}{(5 \text{ ft})(9 \text{ ft})} = 1778 \text{ psf for E80 loading, axle spacing} = 5 \text{ ft, tie length } b = 9 \text{ ft}$$

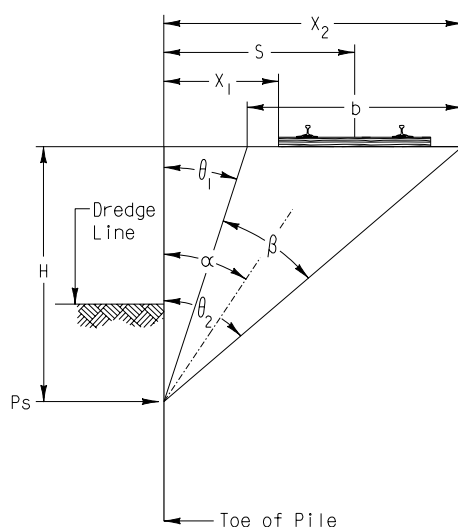
$$\text{Solve for } X_1 = S - b/2 = 7.5 \text{ ft}$$

$$\text{Solve for } X_2 = S + b/2 = 16.5 \text{ ft}$$

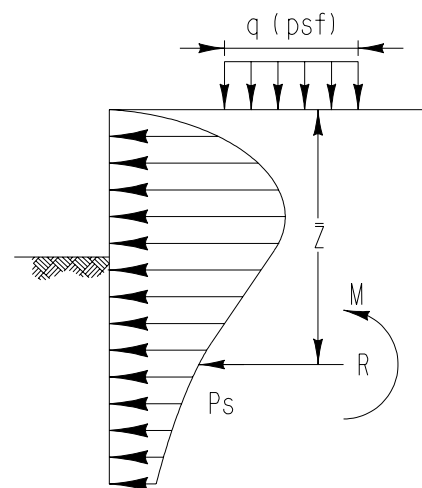
$$\text{Solve for } \theta_1 = \arctan\left(\frac{X_1}{H}\right) = 0.896 \text{ radians} \quad \text{Solve for } \theta_2 = \arctan\left(\frac{X_2}{H}\right) = 1.222 \text{ radians}$$

$$\text{Solve for } \beta = \theta_2 - \theta_1 = 0.326 \text{ radians} \quad \text{Solve for } \alpha = \frac{\theta_1 + \theta_2}{2} = 1.059 \text{ radians}$$

Note: $\tan \alpha \neq \frac{S}{H}$



PRESSURE DISTRIBUTION FOR STRIP LOAD



EQUIVALENT LOADING

- Pressure, P_s due to E80 liveload at the above-identified point:

$$P_s = \frac{2q}{\pi} (\beta - \sin \beta \cos 2\alpha) = \frac{2 * 1778}{\pi} (0.326 - \sin(0.326) \cos(2 * 1.059)) = 558 \text{ psf}$$

- Shear due to E80 liveload at the above-identified point:

$$R_x = \frac{2qH\beta}{\pi} = \frac{2 * 1778 * 6 * 0.326}{\pi} = 2214 \text{ lbs/ft}$$

- Depth \bar{z} from base of tie:

$$\bar{z} = \frac{H^2\beta - bH + X_2^2\left(\frac{\pi}{2} - \theta_2\right) - X_1^2\left(\frac{\pi}{2} - \theta_1\right)}{2H\beta} = \frac{6^2 * 0.326 - 9 * 6 + 16.5^2\left(\frac{\pi}{2} - 1.222\right) - 7.5^2\left(\frac{\pi}{2} - 0.896\right)}{2 * 6 * 0.326} = 3.77 \text{ ft}$$

SAMPLE PROBLEM (CONTINUED)

- Moment due to E80 liveload at the above identified point:

$$M = R_x (H - \bar{z}) = 2214 * (6 - 3.77) = 4940 \text{ ft-lbs/ft}$$

Use the above equations to determine P_s , M , R_x & \bar{z} due to the E80 liveload along the **entire** depth of the shoring system. Typically the equations are evaluated on 6" increments to determine the maximum values along the depth of the shoring system. The resultants must be combined with other applicable pressures and loads to evaluate the total loading on the shoring system for the entire depth of the system. Determine the minimum embedment depth required and the minimum cross sectional properties of the shoring system based on the allowable stresses and the required factors of safety.

CHART A

This chart identifies the active pressure and resulting forces due to E80 live load.

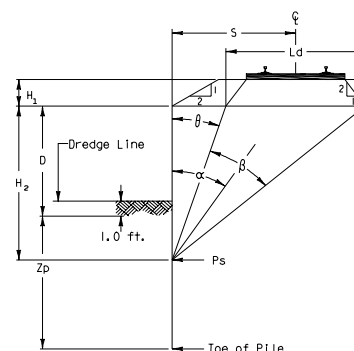
See "SAMPLE PROBLEM" sheet for definitions of variables and equations.

1. Select distance S from track centerline to face of shoring.

2. Select depth H₂ below base of tie.

3. Read P_s, M, R and \bar{z} from the table.

4. Use the procedure outlined in the sample problem to determine values at non-tabulated points.



$$P_s = \frac{2q}{\pi} [\beta - \sin \beta \cos(2\alpha)]$$

where q = 1778 psf

Boussinesq surcharge pressure E80 live load for H₁=0

Depth below top of shoring H ₂ (ft)	Variables	Horizontal distance (S) from shoring to track CL measured at a right angle									
		12	14	16	18	20	22	24	26	28	30
2	P_s (psf)	305	220	166	130	105	86	72	61	53	46
	α (radians)	1.38	1.41	1.44	1.45	1.47	1.48	1.48	1.49	1.50	1.50
	β (radians)	0.14	0.10	0.07	0.06	0.05	0.04	0.03	0.03	0.02	0.02
	\bar{z} (ft)	1.32	1.33	1.33	1.33	1.33	1.33	1.33	1.33	1.33	1.33
	M (ft-lbs/ft)	215	152	114	89	71	58	49	41	36	31
	R (lbs/ft)	317	226	170	132	106	87	73	62	53	46
4	P_s (psf)	496	381	299	240	197	164	138	118	102	89
	α (radians)	1.21	1.27	1.31	1.34	1.36	1.38	1.40	1.41	1.43	1.44
	β (radians)	0.25	0.19	0.14	0.11	0.09	0.07	0.06	0.05	0.05	0.04
	\bar{z} (ft)	2.59	2.61	2.63	2.64	2.64	2.65	2.65	2.65	2.65	2.66
	M (ft-lbs/ft)	1,609	1,165	882	692	557	459	384	327	281	244
	R (lbs/ft)	1,141	840	643	508	411	339	285	242	209	182
6	P_s (psf)	558	461	381	317	266	225	193	167	146	128
	α (radians)	1.06	1.13	1.19	1.23	1.27	1.29	1.32	1.34	1.35	1.37
	β (radians)	0.33	0.25	0.20	0.16	0.13	0.11	0.09	0.08	0.07	0.06
	\bar{z} (ft)	3.77	3.83	3.88	3.90	3.92	3.94	3.95	3.96	3.96	3.97
	M (ft-lbs/ft)	4,944	3,674	2,830	2,244	1,822	1,508	1,269	1,082	933	813
	R (lbs/ft)	2,214	1,696	1,332	1,070	877	731	618	529	458	400
8	P_s (psf)	535	476	414	358	309	268	234	205	181	160
	α (radians)	0.94	1.02	1.08	1.13	1.17	1.21	1.24	1.26	1.29	1.30
	β (radians)	0.37	0.29	0.24	0.19	0.16	0.14	0.12	0.10	0.09	0.08
	\bar{z} (ft)	4.84	4.97	5.06	5.11	5.16	5.19	5.21	5.23	5.24	5.26
	M (ft-lbs/ft)	10,481	8,006	6,286	5,051	4,141	3,452	2,920	2,501	2,165	1,892
	R (lbs/ft)	3,316	2,641	2,134	1,751	1,456	1,228	1,047	903	786	689
10	P_s (psf)	474	449	411	370	329	293	260	232	207	186
	α (radians)	0.83	0.92	0.99	1.04	1.09	1.13	1.17	1.19	1.22	1.24
	β (radians)	0.38	0.32	0.26	0.22	0.19	0.16	0.14	0.12	0.10	0.09
	\bar{z} (ft)	5.81	6.02	6.16	6.26	6.34	6.39	6.44	6.47	6.50	6.52
	M (ft-lbs/ft)	18,145	14,227	11,385	9,280	7,689	6,463	5,502	4,736	4,117	3,610
	R (lbs/ft)	4,328	3,571	2,964	2,482	2,099	1,792	1,544	1,341	1,175	1,037
12	P_s (psf)	404	403	386	360	331	302	274	248	225	204
	α (radians)	0.75	0.83	0.90	0.96	1.01	1.06	1.10	1.13	1.16	1.18
	β (radians)	0.38	0.33	0.28	0.24	0.20	0.18	0.15	0.13	0.12	0.11
	\bar{z} (ft)	6.68	6.97	7.18	7.34	7.46	7.55	7.61	7.67	7.71	7.75
	M (ft-lbs/ft)	27,703	22,237	18,121	14,980	12,550	10,641	9,121	7,895	6,894	6,068
	R (lbs/ft)	5,207	4,424	3,763	3,214	2,762	2,389	2,080	1,823	1,608	1,427
14	P_s (psf)	338	351	349	337	319	298	276	255	234	215
	α (radians)	0.68	0.76	0.83	0.89	0.94	0.99	1.03	1.07	1.10	1.13
	β (radians)	0.38	0.33	0.28	0.25	0.22	0.19	0.17	0.15	0.13	0.12
	\bar{z} (ft)	7.46	7.85	8.13	8.35	8.51	8.64	8.74	8.82	8.89	8.94
	M (ft-lbs/ft)	38,880	31,856	26,395	22,116	18,729	16,021	13,831	12,043	10,568	9,339
	R (lbs/ft)	5,948	5,178	4,499	3,913	3,414	2,990	2,631	2,327	2,068	1,847
16	P_s (psf)	280	301	310	308	300	286	271	254	237	220
	α (radians)	0.62	0.70	0.77	0.83	0.88	0.93	0.97	1.01	1.04	1.07
	β (radians)	0.36	0.32	0.28	0.25	0.22	0.20	0.18	0.16	0.14	0.13
	\bar{z} (ft)	8.17	8.64	9.01	9.29	9.51	9.68	9.82	9.93	10.03	10.10
	M (ft-lbs/ft)	51,411	42,880	36,066	30,598	26,183	22,590	19,644	17,207	15,175	13,468
	R (lbs/ft)	6,563	5,829	5,158	4,560	4,034	3,576	3,179	2,837	2,540	2,284

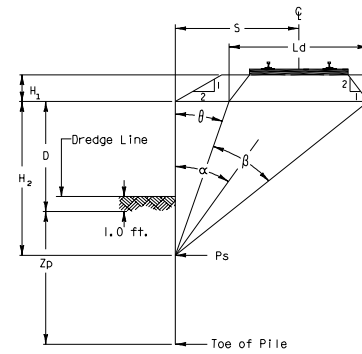
CHART A continued

This chart identifies the active pressure and resulting forces due to E80 live load. See "SAMPLE PROBLEM" sheet for definitions of variables and equations.

1. Select distance S from track centerline to face of shoring.
2. Select depth H₂ below base of tie.
3. Read Ps, M, R and Z̄ from the table.
4. Use the procedure outlined in the sample problem to determine values at non-tabulated points.

$$P_s = \frac{2q}{\pi} [\beta - \sin \beta \cos(2\alpha)]$$

where q = 1778 psf



Boussinesq surcharge pressure E80 live load for H₁=0

Depth below top of shoring H ₂ (ft)	Variables	Horizontal distance (S) from shoring to track CL measured at a right angle									
		12	14	16	18	20	22	24	26	28	30
18	Ps (psf)	231	256	271	277	276	269	259	247	234	220
	α (radians)	0.57	0.64	0.71	0.77	0.82	0.87	0.92	0.96	0.99	1.02
	β (radians)	0.35	0.31	0.28	0.25	0.23	0.20	0.18	0.16	0.15	0.13
	Z̄ (ft)	8.80	9.37	9.81	10.16	10.44	10.67	10.85	11.00	11.12	11.22
	M (ft-lbs/ft)	65,062	55,110	46,976	40,313	34,834	30,304	26,536	23,384	20,728	18,477
	R (lbs/ft)	7,072	6,386	5,739	5,145	4,609	4,132	3,710	3,338	3,012	2,725
20	Ps (psf)	191	217	236	246	250	249	244	237	227	217
	α (radians)	0.52	0.59	0.66	0.72	0.77	0.82	0.87	0.91	0.94	0.98
	β (radians)	0.33	0.30	0.28	0.25	0.23	0.21	0.19	0.17	0.15	0.14
	Z̄ (ft)	9.37	10.03	10.56	10.98	11.32	11.59	11.82	12.01	12.16	12.30
	M (ft-lbs/ft)	79,641	68,368	58,973	51,137	44,586	39,093	34,465	30,548	27,216	24,367
	R (lbs/ft)	7,493	6,859	6,245	5,668	5,135	4,651	4,214	3,822	3,474	3,163
22	Ps (psf)	159	184	204	217	225	228	227	223	217	210
	α (radians)	0.49	0.55	0.62	0.67	0.73	0.77	0.82	0.86	0.90	0.93
	β (radians)	0.31	0.29	0.27	0.25	0.23	0.21	0.19	0.17	0.16	0.14
	Z̄ (ft)	9.89	10.64	11.24	11.73	12.14	12.47	12.74	12.97	13.17	13.33
	M (ft-lbs/ft)	94,986	82,497	71,913	62,945	55,341	48,878	43,370	38,658	34,611	31,122
	R (lbs/ft)	7,842	7,260	6,684	6,131	5,611	5,128	4,685	4,283	3,918	3,590
24	Ps (psf)	133	157	176	191	202	207	210	209	206	201
	α (radians)	0.45	0.52	0.58	0.63	0.68	0.73	0.78	0.82	0.85	0.89
	β (radians)	0.30	0.28	0.26	0.24	0.22	0.20	0.19	0.17	0.16	0.15
	Z̄ (ft)	10.35	11.19	11.87	12.44	12.90	13.29	13.62	13.89	14.13	14.32
	M (ft-lbs/ft)	110,969	97,366	85,670	75,625	66,997	59,577	53,183	47,661	42,875	38,716
	R (lbs/ft)	8,132	7,600	7,064	6,540	6,037	5,564	5,122	4,715	4,342	4,001
26	Ps (psf)	112	134	153	168	180	188	192	194	193	191
	α (radians)	0.42	0.48	0.54	0.60	0.65	0.69	0.74	0.78	0.82	0.85
	β (radians)	0.28	0.27	0.25	0.23	0.22	0.20	0.19	0.17	0.16	0.15
	Z̄ (ft)	10.78	11.69	12.45	13.09	13.62	14.07	14.44	14.77	15.04	15.28
	M (ft-lbs/ft)	127,485	112,863	100,135	89,071	79,460	71,105	63,836	57,499	51,963	47,113
	R (lbs/ft)	8,376	7,890	7,393	6,899	6,418	5,959	5,524	5,118	4,741	4,393
28	Ps (psf)	94	114	132	148	160	169	175	179	180	180
	α (radians)	0.40	0.46	0.51	0.56	0.61	0.66	0.70	0.74	0.78	0.81
	β (radians)	0.27	0.26	0.24	0.23	0.21	0.20	0.19	0.17	0.16	0.15
	Z̄ (ft)	11.17	12.16	12.99	13.70	14.29	14.80	15.23	15.60	15.91	16.19
	M (ft-lbs/ft)	144,448	128,896	115,211	103,191	92,642	83,385	75,258	68,113	61,823	56,274
	R (lbs/ft)	8,581	8,137	7,677	7,214	6,758	6,315	5,892	5,491	5,115	4,764
30	Ps (psf)	80	98	115	130	142	152	160	165	167	168
	α (radians)	0.37	0.43	0.48	0.53	0.58	0.63	0.67	0.71	0.74	0.78
	β (radians)	0.26	0.25	0.23	0.22	0.21	0.20	0.18	0.17	0.16	0.15
	Z̄ (ft)	11.52	12.59	13.49	14.26	14.92	15.48	15.97	16.38	16.75	17.06
	M (ft-lbs/ft)	161,789	145,388	130,819	117,903	106,466	96,343	87,381	79,443	72,404	66,153
	R (lbs/ft)	8,755	8,349	7,925	7,492	7,060	6,636	6,227	5,834	5,462	5,112
32	Ps (psf)	69	85	101	115	127	137	145	151	155	157
	α (radians)	0.35	0.41	0.46	0.51	0.55	0.60	0.64	0.68	0.71	0.75
	β (radians)	0.25	0.24	0.22	0.21	0.20	0.19	0.18	0.17	0.16	0.15
	Z̄ (ft)	11.85	12.98	13.95	14.79	15.51	16.13	16.67	17.13	17.54	17.89
	M (ft-lbs/ft)	179,452	162,274	146,888	133,136	120,859	109,909	100,144	91,432	83,655	76,706
	R (lbs/ft)	8,904	8,532	8,140	7,736	7,329	6,925	6,531	6,150	5,785	5,438