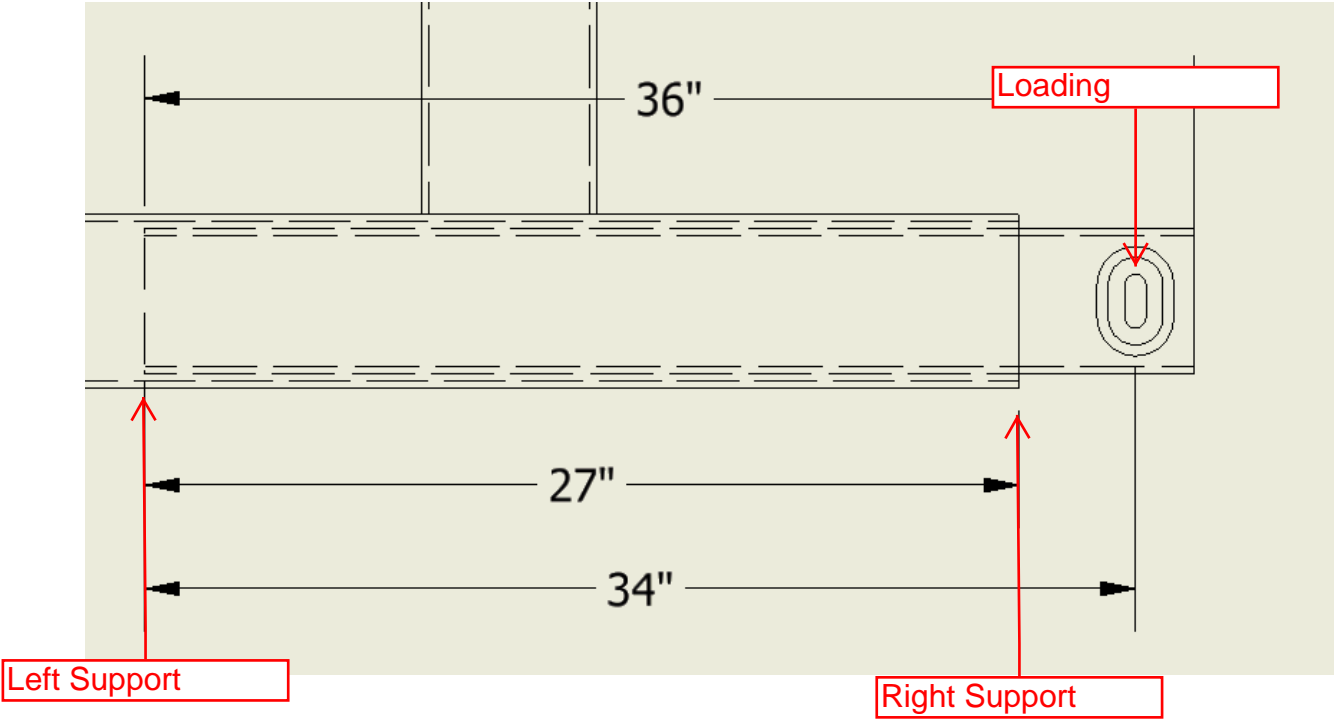
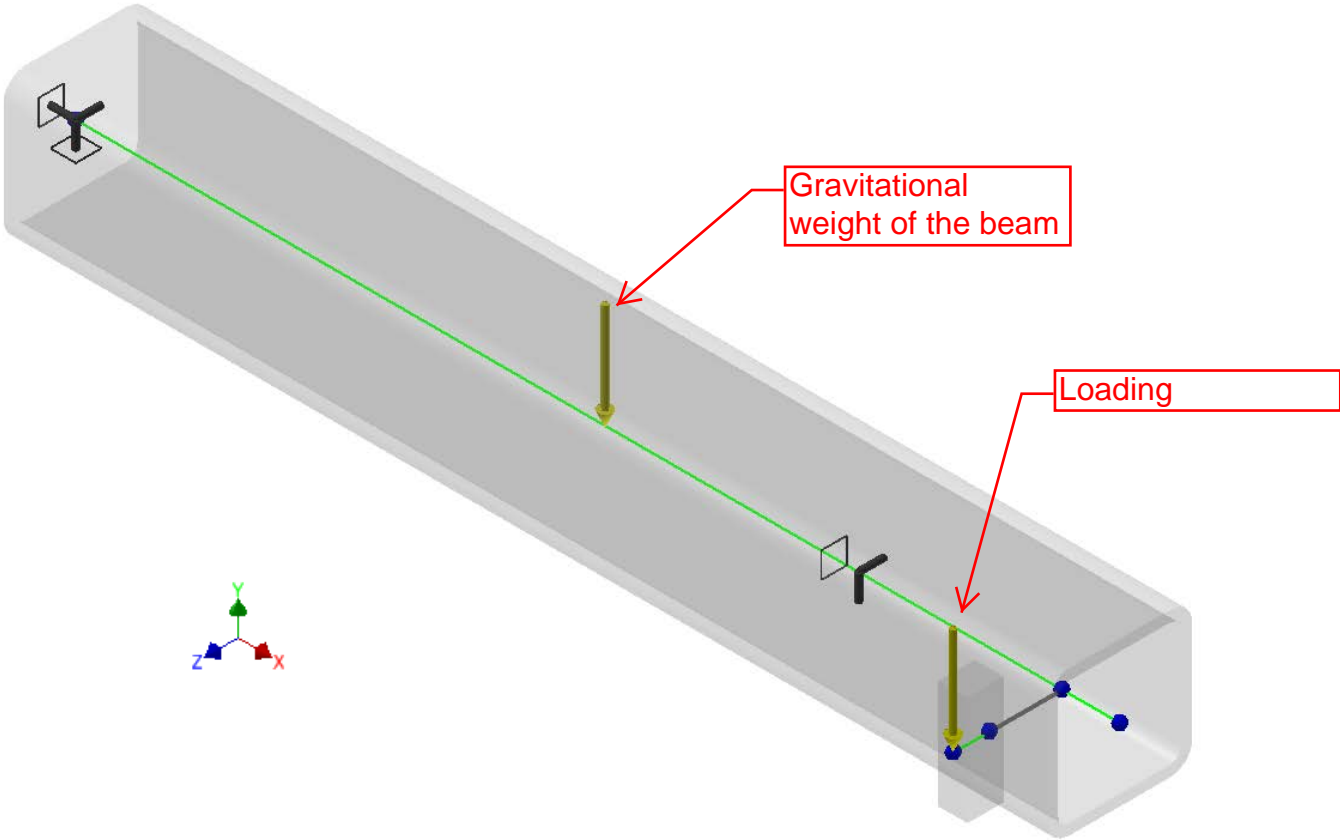
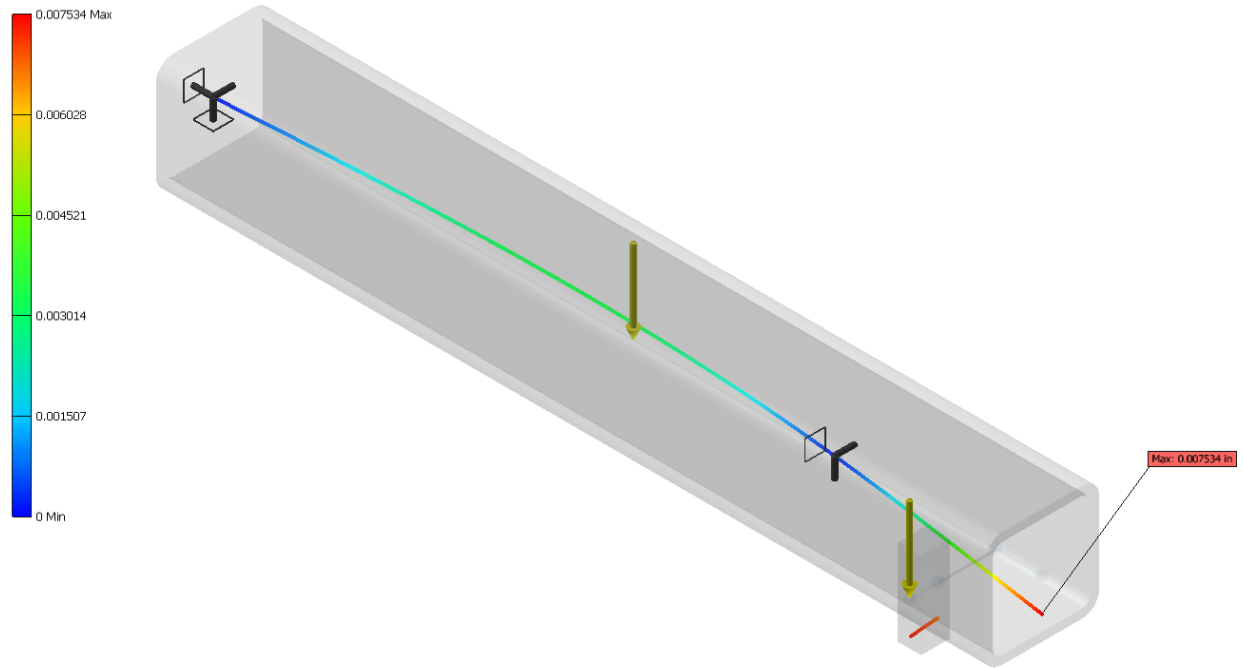


Left Support			Right Support		
Axis	Displacement	Rotation	Axis	Displacement	Rotation
X	Fixed	Fixed	X	Free	Fixed
Y	Fixed	Fixed	Y	Fixed	Free
Z	Fixed	Free	Z	Fixed	Free

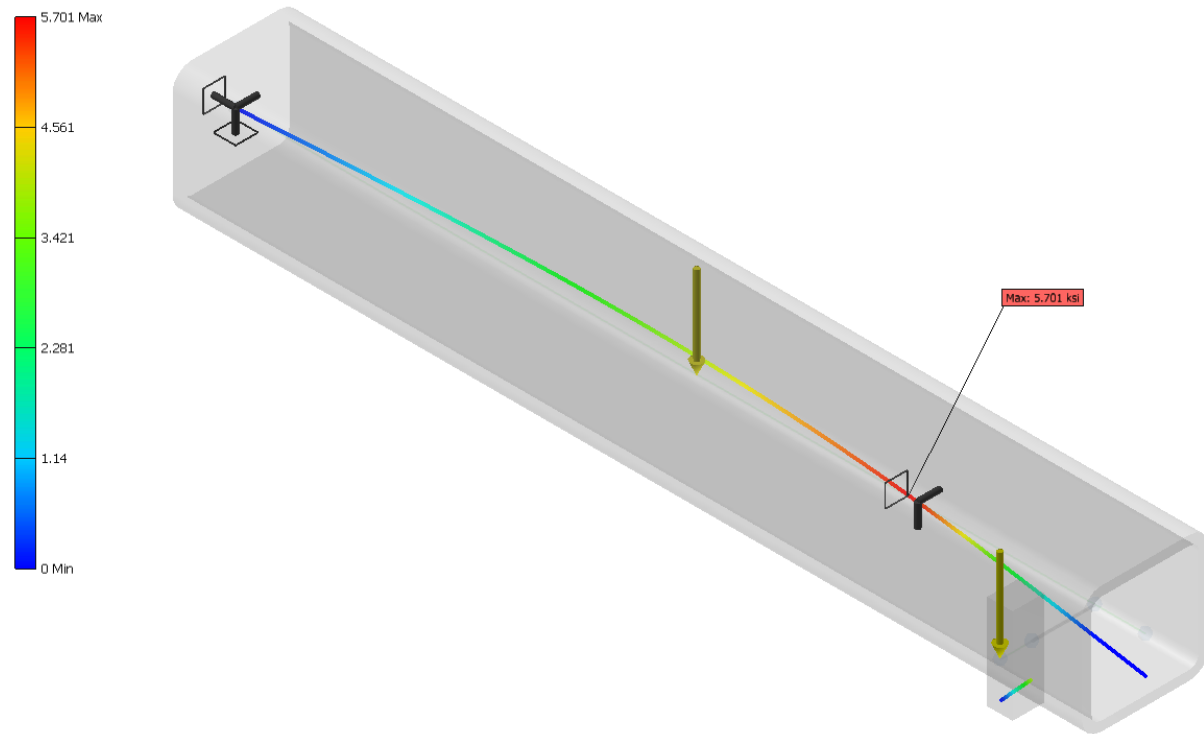


Type: Displacement
Units: in
4/21/2013, 4:41:45 PM



Max Deflection at the end is 0.007534 inches according to FEA.

Type: Normal Stress Smax
Units: ksi
4/21/2013, 4:43:12 PM



Type: Torsional Stress T
Units: ksi
4/21/2013, 4:44:49 PM

