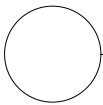
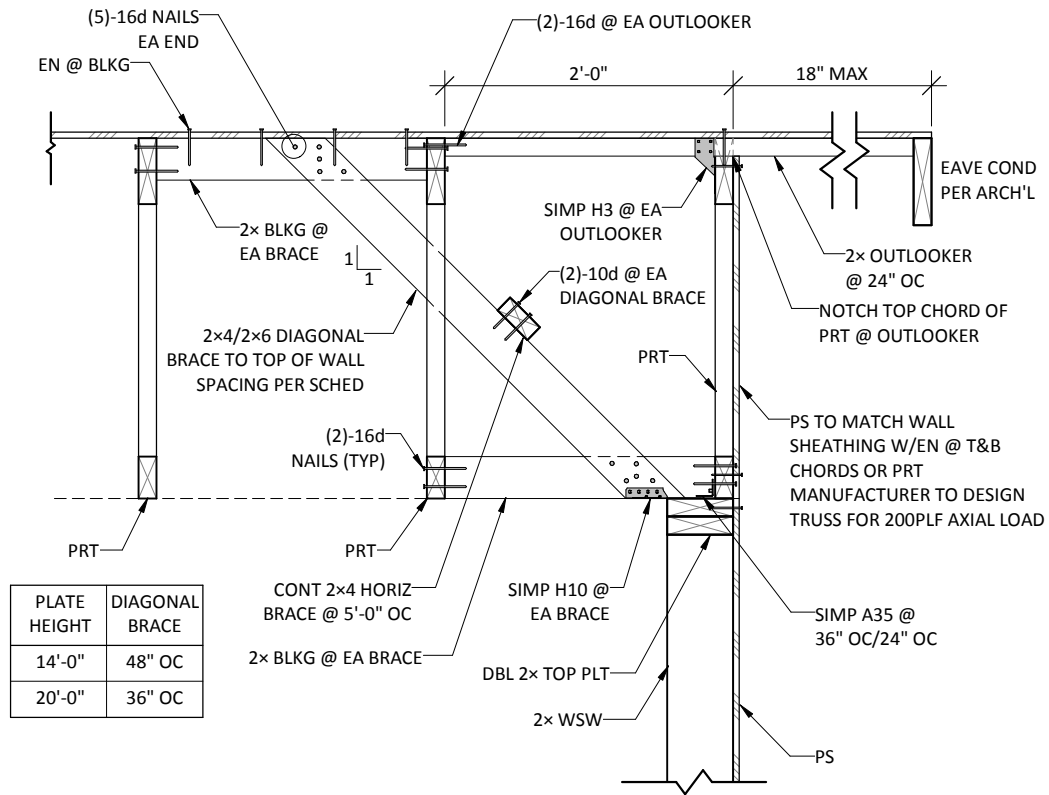


**NOTE:**

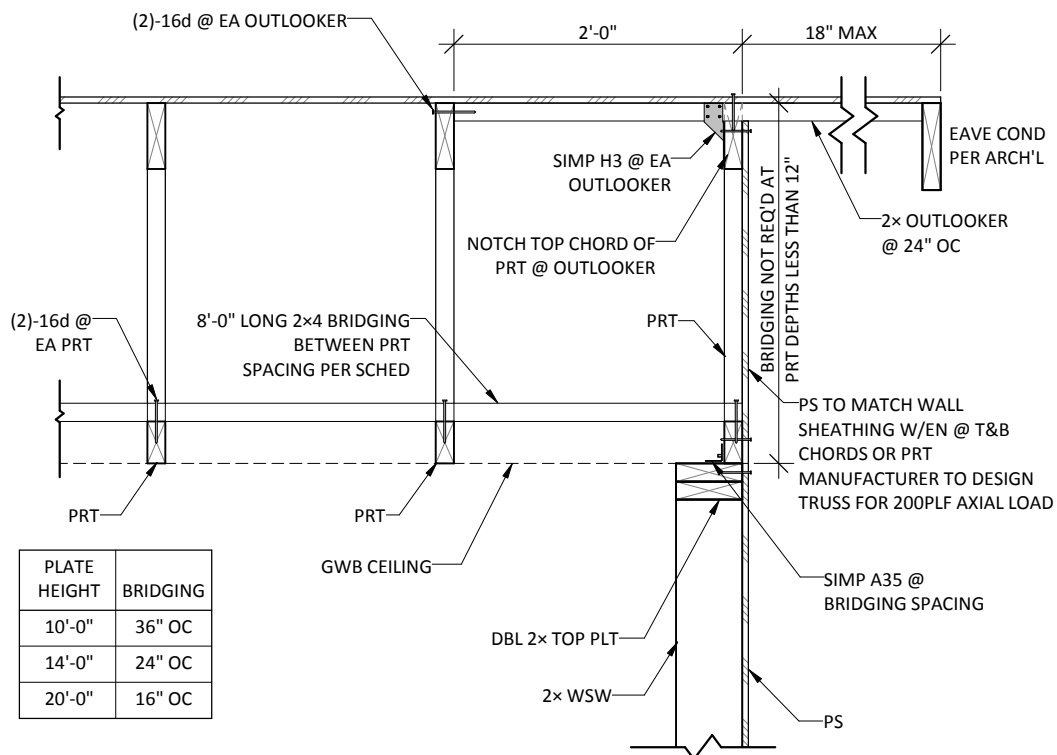
1. USE ALTERNATE DETAIL -/--- WHERE TRUSS DEPTH DOES NOT EXCEED 6'-0".
2. WHEN TRUSS DEPTH  $\leq 9'$  USE SIZE OR SPACING SHOWN BEFORE "/".
3. WHEN TRUSS DEPTH  $>9'$  AND  $\leq 15'$  USE SIZE OR SPACING SHOWN AFTER "/".



## PREFAB WOOD TRUSS AT WOOD STUD WALL

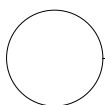
DO NOT SCALE

WT-WSW103-1



**NOTE:**

1. AT LOCATIONS WHERE TRUSS DEPTH EXCEEDS 6'-0", USE DETAIL CUT ON PLANS



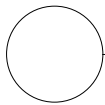
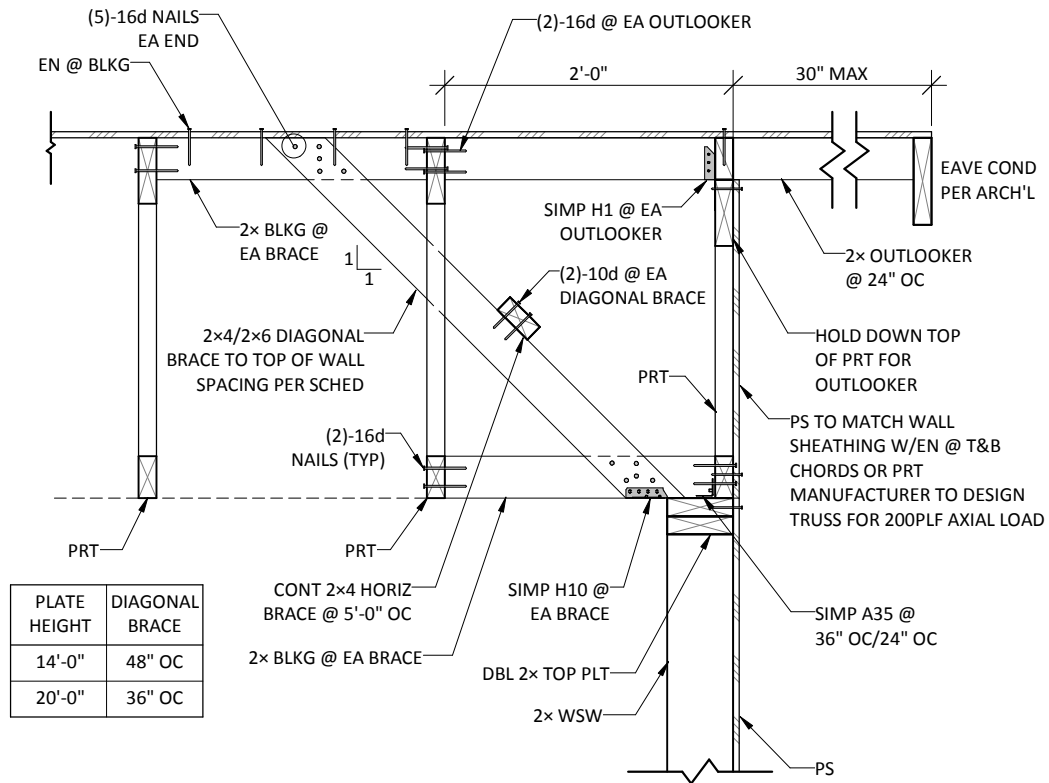
## PREFAB WOOD TRUSS AT WOOD STUD WALL

DO NOT SCALE

WT-WSW104-1

**NOTE:**

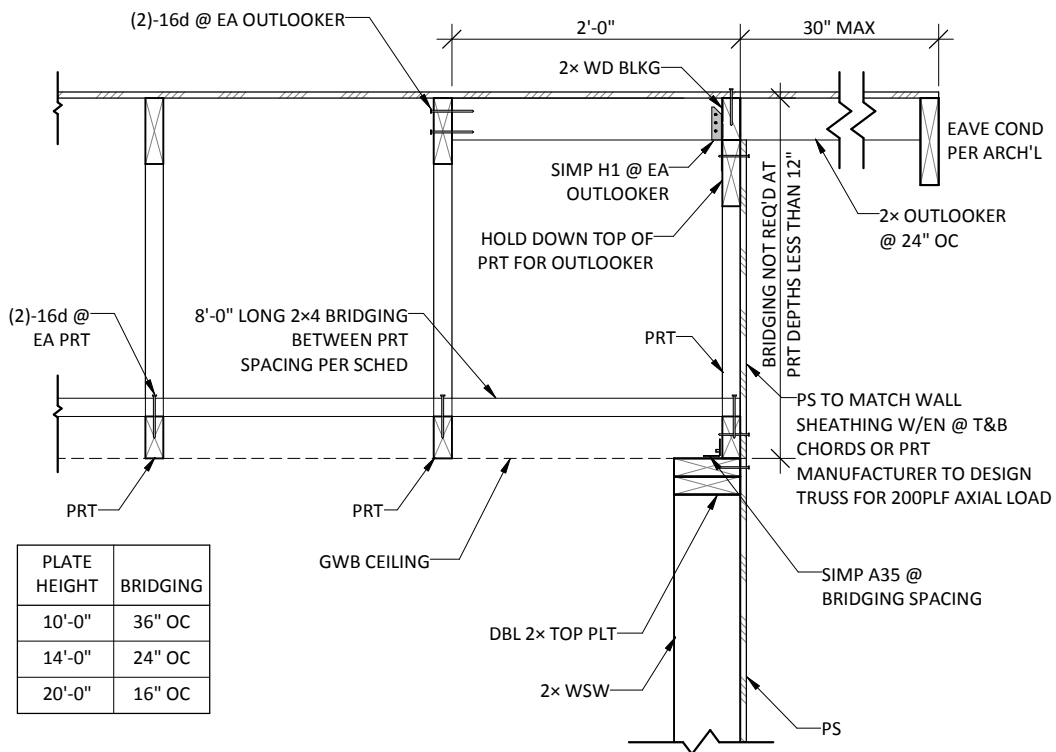
1. USE ALTERNATE DETAIL -/--- WHERE TRUSS DEPTH DOES NOT EXCEED 6'-0".
2. WHEN TRUSS DEPTH  $\leq$  9' USE SIZE OR SPACING SHOWN BEFORE "/".
3. WHEN TRUSS DEPTH  $>$  9' AND  $\leq$  15' USE SIZE OR SPACING SHOWN AFTER "/".



## PREFAB WOOD TRUSS AT WOOD STUD WALL

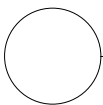
DO NOT SCALE

WT-WSW103



**NOTE:**

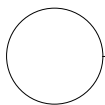
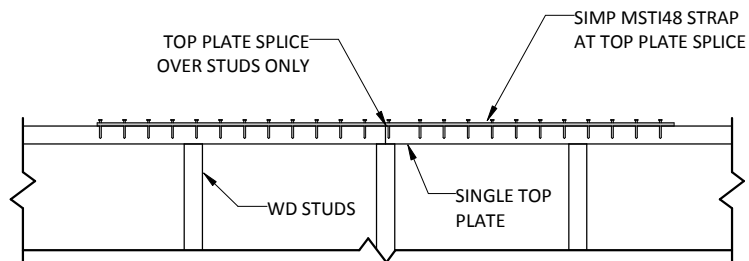
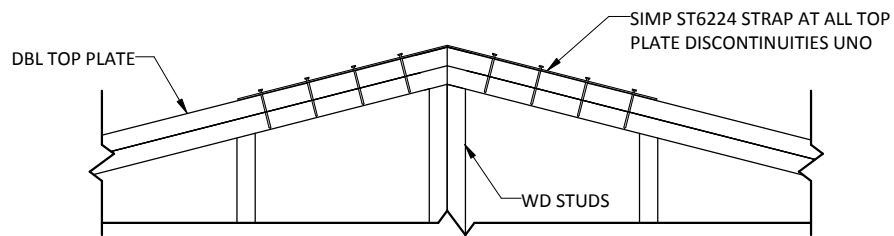
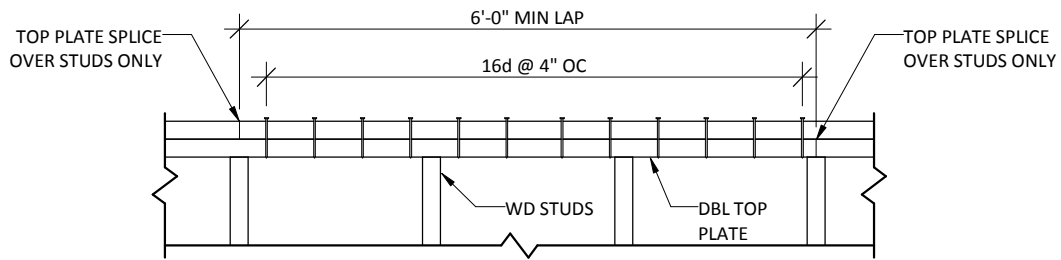
1. AT LOCATIONS WHERE TRUSS DEPTH EXCEEDS 6'-0", USE DETAIL CUT ON PLANS



## PREFAB WOOD TRUSS AT WOOD STUD WALL

DO NOT SCALE

WT-WSW104



## TOP PLATE SPLICE

DO NOT SCALE

W02