

CLEAR SPAN	JOIST TYPE	JOIST WEIGHT PER FT. IN LBS.	TOTAL SAFE LOAD PER FT. IN LBS.	CLEAR SPAN	JOIST TYPE	JOIST WEIGHT PER FT. IN LBS.	TOTAL SAFE LOAD PER FT. IN LBS.	CLEAR SPAN	JOIST TYPE	JOIST WEIGHT PER FT. IN LBS.	TOTAL SAFE LOAD PER FT. IN LBS.
<b>30 FEET</b> <i>Continued</i>	22C12	6.86	272	<b>31 FEET</b> <i>Continued</i>	18E12	8.08	305	<b>31 FEET</b> <i>Continued</i>	28E	8.08	470
	22D	5.97	185 328		18F12	9.11	158 352		28F	9.29	396 557
	22E	7.04	224 391		18G	9.26	189 421				472
	22F	8.70	266 464		18H	11.09	228 501	<b>32 FEET</b>	16C10	5.56	171
	22G	10.04	317 553		18J	13.19	272 598		16D11	6.66	78 207
	24B12	6.71	380 241		20C11	6.22	325 230		16E11	7.53	94 246
	24C	5.47	202 297		20D12	7.42	137 279		16F12	8.92	112 292
	24D	6.25	222 360		20E12	8.29	166 332		16G13	10.56	134 350
	24E	7.36	268 428		20F	8.48	197 394		16H13	12.04	162 417
	24F	8.90	318 506		20G	9.58	236 470		16J14	14.18	194 497
	24G	10.27	379 604		20H	11.49	283 559		18C11	6.05	232 193
	26C	5.74	454 324		22C12	6.86	338 255		18D11	6.82	100 234
	26D	6.67	262 391		22D	5.97	168 308		18E12	8.08	121 286
	26E	7.75	316 465		22E	7.04	203 366		18F12	9.11	144 331
	26F	9.04	375 551		22F	8.70	241 434		18G	9.26	172 395
	28B	5.63	447 285		22G	10.01	287 518		18H	11.09	207 470
	28C	6.01	270 350		22H	11.71	344 617		18J	13.00	247 561
	28D	6.93	306 423		24C	5.44	411 278		18K	14.90	296 633
	28E	8.01	369 502		24D	6.15	201 337		20C11	6.22	344 216
	28F	9.33	437 595		24E	7.36	243 401		20D12	7.42	125 262
			521		24F	8.90	288 474		20E12	8.29	151 311
					24G	10.24	344 566		20F	8.48	179 370
<b>31 FEET</b>	16C10	5.56	182		26C	5.71	412 303		20G	9.58	214 441
	16D11	6.66	86 220		26D	6.65	238 366		20H	11.31	257 525
	16E11	7.53	104 263		26E	7.73	287 436		20J	13.20	307 626
	16F12	8.92	124 311		26F	9.01	340 516		22C12	6.86	367 239
	16G13	10.56	148 372		26G	10.42	405 615		22D	5.97	153 289
	16H13	12.04	178 444		28C	5.98	485 327		22E	7.04	184 343
	16J14	14.18	213 526		28D	6.91	277 396		22F	8.70	219 407
	18C11	6.05	255 206				334		22G	9.80	261 486
	18D11	6.82	110 249								313
			133								



CLEAR SPAN	JOIST TYPE	JOIST WEIGHT PER FT. IN LBS.	TOTAL SAFE LOAD PER FT. IN LBS.	CLEAR SPAN	JOIST TYPE	JOIST WEIGHT PER FT. IN LBS.	TOTAL SAFE LOAD PER FT. IN LBS.	CLEAR SPAN	JOIST TYPE	JOIST WEIGHT PER FT. IN LBS.	TOTAL SAFE LOAD PER FT. IN LBS.
<b>32 FEET</b> <i>Continued</i>	22H	11.46	579 374	<b>33 FEET</b> <i>Continued</i>	18K	14.85	595 313	<b>33 FEET</b> <i>Continued</i>	28E	7.85	415 328
	24B12	6.71	212 166		20C11	6.22	203 114		28F	8.95	492 391
	24C	5.39	261 183		20D12	7.42	246 138		28G	10.51	585 468
	24D	6.15	317 221		20E12	8.29	293 164		30C	6.10	311 265
	24E	7.16	376 262		20F	8.48	348 195		30D	7.03	375 319
	24F	8.90	445 312		20G	9.58	415 234		30E	7.91	445 379
	24G	10.05	531 374		20H	11.01	489 280		30F	9.27	527 451
	24H	11.71	632 447		20J	13.14	589 335		30G	10.72	628 539
	26C	5.68	285 216		22C12	6.86	225 139	<b>34 FEET</b>	18C11	6.05	171 83
	26D	6.62	343 261		22D	5.97	271 168		18D11	6.82	207 101
	26E	7.71	409 309		22E	7.04	323 199		18E12	8.08	253 120
	26F	8.80	484 368		22F	8.70	383 238		18F12	9.11	293 143
	26G	10.25	577 441		22G	9.80	457 285		18G	9.26	350 172
	28C	5.95	307 252		22H	11.20	474 341		18H	11.09	416 206
	28D	6.88	371 304		22J	13.45	649 407		18J	12.90	486 246
	28E	7.87	441 360		24C	5.39	246 167		18K	14.79	561 286
	28F	8.99	523 429		24D	6.15	298 201		20C11	6.22	191 104
	28G	10.54	622 513		24E	7.16	354 239		20D12	7.42	232 126
	30C	6.13	331 291		24F	8.90	418 285		20E12	8.29	276 149
	30D	7.06	399 350		24G	10.02	499 341		20F	8.03	328 178
	30E	8.07	473 415		24H	11.68	595 408		20G	9.48	391 214
	30F	9.31	560 494		26C	5.65	268 197		20H	10.97	465 256
<b>33 FEET</b>	18C11	6.05	182 91		26D	6.59	323 238		20J	13.08	555 306
	18D11	6.82	220 110		26E	7.59	384 282		20K	14.99	625 355
	18E12	8.08	269 131		26F	8.76	455 336		22C12	6.86	212 127
	18F12	9.11	311 157		26G	10.21	542 402		22D12	7.63	256 153
	18G	9.26	371 189		26H	11.95	646 480		22E	6.82	304 182
	18H	11.09	442 226		28C	5.91	289 230		22F	8.22	361 217
	18J	13.00	528 270		28D	6.86	349 277		22G	9.70	431 261





# OPEN WEB STEEL JOISTS

CLEAR SPAN	JOIST TYPE	JOIST WEIGHT PER FT. IN LBS.	TOTAL SAFE LOAD PER FT. IN LBS.	CLEAR SPAN	JOIST TYPE	JOIST WEIGHT PER FT. IN LBS.	TOTAL SAFE LOAD PER FT. IN LBS.	CLEAR SPAN	JOIST TYPE	JOIST WEIGHT PER FT. IN LBS.	TOTAL SAFE LOAD PER FT. IN LBS.
<b>34 FEET</b> <i>Continued</i>	22H	11.40	513 312	<b>35 FEET</b>	18C11	6.05	161 76	<b>35 FEET</b> <i>Continued</i>	24J	13.61	630 407
	22J	13.39	611 372		18D11	6.82	195 92		26C	5.79	238 165
	24C12	7.08	231 152		18E12	8.08	239 110		26D	6.54	287 199
	24D	6.15	280 184		18F12	9.11	276 131		26E	7.55	342 236
	24E	7.46	333 218		18G	9.26	330 158		26F	8.69	404 281
	24F	8.46	394 260		18H	11.09	393 189		26G	10.14	482 337
	24G	9.90	470 312		18J	12.90	469 226		26H	11.81	574 402
	24H	11.65	560 373		18K	14.74	529 262		28C	5.85	257 193
	26C	5.80	252 180		20C11	6.22	180 95		28D	6.80	310 232
	26D	6.57	304 217		20D12	7.42	219 115		28E	7.80	368 275
	26E	7.57	362 258		20E12	8.29	260 137		28F	8.87	437 328
	26F	8.72	429 307		20F	8.03	309 164		28G	10.33	520 392
	26G	10.18	511 368		20G	9.48	368 196		28H	12.21	620 468
	26H	11.88	608 439		20H	10.97	438 235		30C	6.04	276 222
	28C	5.88	272 210		20J	13.10	523 280		30D	6.98	333 267
	28D	6.83	329 253		20K	14.93	590 326		30E	7.98	395 317
	28E	7.83	391 300		22C12	6.86	200 116		30F	9.20	468 378
	28F	8.91	463 358		22D12	7.63	241 141		30G	10.65	558 452
	28G	10.47	551 428		22E	6.82	287 167		32C	6.36	295 254
	30C	6.07	293 242		22F	8.22	340 199		32D	7.29	356 306
	30D	7.01	353 292		22G	9.70	406 239		32E	8.17	423 362
	30E	8.00	419 346		22H	11.37	484 286		32F	9.42	500 431
	30F	9.24	496 412		22J	13.26	577 341		32G	10.87	597 515
	30G	10.68	591 493		24C12	7.08	218 140	<b>36 FEET</b>			
	32C	6.39	312 277		24D	6.15	265 169		18D11	6.82	185 85
	32D	7.32	377 333		24E	7.06	314 200		18E12	8.08	226 101
	32E	8.21	449 395		24F	8.56	372 239		18F12	9.11	261 121
	32F	9.46	530 470		24G	9.87	444 286		18G	9.26	312 145
	32G	11.01	633 562		24H	11.62	528 342		18H	11.09	371 174
									18J	12.90	443 207



CLEAR SPAN	JOIST TYPE	JOIST WEIGHT PER FT. IN LBS.	TOTAL SAFE LOAD PER FT. IN LBS.	CLEAR SPAN	JOIST TYPE	JOIST WEIGHT PER FT. IN LBS.	TOTAL SAFE LOAD PER FT. IN LBS.	CLEAR SPAN	JOIST TYPE	JOIST WEIGHT PER FT. IN LBS.	TOTAL SAFE LOAD PER FT. IN LBS.	
<b>36 FEET</b> <i>Continued</i>	18K	14.68	500 241	<b>36 FEET</b> <i>Continued</i>	28C	5.82	243 177	<b>37 FEET</b> <i>Continued</i>	22H	11.31	433 242	
	20D12	7.42	207 106		28D	6.78	293 213		22J	13.20	516 288	
	20E12	8.29	246 126		28E	7.78	348 253		22K	15.06	582 335	
	20F	8.03	292 150		28F	8.83	413 301		24B12	6.44	158 96	
	20G	9.48	348 180		28G	10.30	491 360		24C12	7.08	195 118	
	20H	10.97	414 216		28H	12.14	586 430		24D	6.15	237 143	
	20J	13.07	495 258		30C	6.01	261 204		24E	7.06	281 169	
	20K	14.88	557 299		30D	6.96	315 246		24F	8.42	333 202	
	22C12	6.86	189 107		30E	7.96	374 292		24G	9.83	396 242	
	22D12	7.63	228 129		30F	9.04	443 347		24H	11.48	473 289	
	22E	6.82	271 153		30G	10.62	527 415		24J	13.49	563 344	
	22F	8.32	322 183		30H	12.45	630 495		24K	15.41	636 400	
	22G	9.70	384 220		32C	6.33	279 233		26D	6.49	257 168	
	22H	11.34	458 263		32D	7.27	337 281		26E	7.51	306 200	
	22J	13.20	545 313		32E	8.13	400 333		26F	8.66	362 238	
	22K	15.19	614 363		32F	9.39	473 396		26G	10.08	431 285	
	24C12	7.08	206 128		32G	10.84	564 474		26H	11.75	514 341	
	24D	6.15	250 155						26J	13.78	612 406	
	24E	7.06	297 184		<b>37 FEET</b>	20D12	7.42		196 97	28C	5.79	230 163
	24F	8.86	351 219			20E12	8.29		233 116	28D	6.75	278 196
	24G	9.83	419 263			20F	8.03		276 138	28E	7.76	330 233
	24H	11.59	500 314			20G	9.48		330 166	28F	8.79	391 277
	24J	13.55	595 374			20H	10.97		392 199	28G	10.27	465 332
	26C	5.78	225 152			20J	13.05		468 237	28H	12.05	555 396
	26D	6.51	271 183			20K	14.82		528 276	30C	5.98	247 188
	26E	7.53	323 217			22C12	6.86		179 98	30D	6.94	298 226
	26F	8.67	382 259			22D12	7.63		216 119	30E	7.94	354 268
	26G	10.11	456 310			22E	6.82		257 141	30F	9.01	419 320
	26H	11.78	543 370			22F	8.22		305 169	30G	10.59	499 382
	26J	13.83	646 440			22G	9.70		364 202	30H	12.39	596 456





# OPEN WEB STEEL JOISTS

CLEAR SPAN	JOIST TYPE	JOIST WEIGHT PER FT. IN LBS.	TOTAL SAFE LOAD PER FT. IN LBS.	CLEAR SPAN	JOIST TYPE	JOIST WEIGHT PER FT. IN LBS.	TOTAL SAFE LOAD PER FT. IN LBS.	CLEAR SPAN	JOIST TYPE	JOIST WEIGHT PER FT. IN LBS.	TOTAL SAFE LOAD PER FT. IN LBS.
<b>37 FEET</b> <i>Continued</i>	32C	6.30	264	<b>38 FEET</b> <i>Continued</i>	26D	6.46	243	<b>39 FEET</b>	20E12	8.29	209
	32D	7.25	215		26E	7.48	155		20F12	9.31	99
	32E	8.24	319		26F	8.64	290		20G	9.48	249
	32F	9.35	259		26G	10.04	184		20H	10.97	118
	32G	10.81	379		26H	11.72	343		20J	13.00	297
	32H	12.69	307		26J	13.72	220		20K	14.71	142
			448				263				353
<b>38 FEET</b>			534				487				170
			436				314				421
			635				580				202
			520				374				475
							218				235
							150				194
							263				102
							181				231
							313				121
							215				274
							371				144
							256				327
							441				173
							306				390
							526				206
							366				464
							435				246
							234				523
							173				286
							283				213
							209				122
							335				253
							248				145
							397				299
							295				172
							473				357
							353				207
							565				426
							421				247
							250				507
							198				294
							302				572
							239				341
							359				231
							283				144
							337				275
							506				171
							403				326
							602				203
							480				388
							282				243
							253				462
							340				291
							304				551
							404				346
							360				621
							478				402
							428				207
							570				139
							512				250
											168





# OPEN WEB STEEL JOISTS

CLEAR SPAN	JOIST TYPE	JOIST WEIGHT PER FT. IN LBS.	TOTAL SAFE LOAD PER FT. IN LBS.	CLEAR SPAN	JOIST TYPE	JOIST WEIGHT PER FT. IN LBS.	TOTAL SAFE LOAD PER FT. IN LBS.	CLEAR SPAN	JOIST TYPE	JOIST WEIGHT PER FT. IN LBS.	TOTAL SAFE LOAD PER FT. IN LBS.
<b>39</b> FEET <i>Continued</i>	28E	7.72	297 199	<b>40</b> FEET <i>Continued</i>	20K	14.76	451 218	<b>40</b> FEET <i>Continued</i>	30E	7.87	303 212
	28F	8.87	352 237		22E	6.82	220 112		30F	8.89	359 253
	28G	10.20	419 283		22F	8.22	261 133		30G	10.38	427 302
	28H	11.88	499 338		22G	9.70	311 160		30H	12.18	510 361
	28J	14.05	595 403		22H	11.21	371 191		30J	14.29	605 429
	30C	5.93	223 160		22J	13.12	442 228		32C	6.22	226 170
	30D	6.89	268 193		22K	14.90	498 265		32D	7.18	273 205
	30E	7.90	318 229		24D	6.15	203 113		32E	8.18	324 243
	30F	8.93	377 273		24E	7.06	241 134		32F	9.24	383 289
	30G	10.41	449 326		24F	8.42	285 160		32G	10.72	457 345
	30H	12.26	537 389		24G	9.83	340 191		32H	12.50	544 412
	30J	14.25	636 463		24H	11.39	405 229		32J	14.82	647 490
	32C	6.25	237 183		24J	13.29	482 272		36C	6.83	255 217
	32D	7.20	287 221		24K	15.25	544 316		36D	7.76	307 261
	32E	8.20	341 262		26D	6.41	220 133		36E	8.61	365 309
	32F	9.28	403 311		26E	7.44	262 158		36F	9.88	432 367
	32G	10.75	481 372		26F	8.60	310 188		36G	11.34	515 439
	32H	12.56	572 444		26G	9.89	369 226		36H	13.24	614 523
	36C	6.85	268 234		26H	11.67	440 269	<b>41</b> FEET	22E12	8.50	209 104
	36D	7.78	323 281		26J	13.61	524 321		22F	8.22	248 124
	36E	8.65	384 333		26K	15.53	590 372		22G	9.70	296 149
	36F	9.91	454 396		28D	6.68	238 155		22H	11.21	353 178
	36G	11.44	541 473		28E	7.70	282 184		22J	13.09	420 212
	36H	13.36	645 564		28F	8.85	335 219		22K	14.85	474 246
<b>40</b> FEET	20E12	8.29	199 92		28G	10.17	398 263		24D	6.15	193 105
	20F12	9.31	237 109		28H	11.86	475 313		24E	7.06	229 124
	20G	9.48	282 131		28J	14.00	566 373		24F	8.42	271 148
	20H	10.97	336 157		28K	15.87	636 433		24G	9.83	323 178
	20J	12.97	401 188		30C	5.90	212 149		24H	11.36	385 212
					30D	6.86	255 179				





# OPEN WEB STEEL JOISTS

CLEAR SPAN	JOIST TYPE	JOIST WEIGHT PER FT. IN LBS.	TOTAL SAFE LOAD PER FT. IN LBS.	CLEAR SPAN	JOIST TYPE	JOIST WEIGHT PER FT. IN LBS.	TOTAL SAFE LOAD PER FT. IN LBS.	CLEAR SPAN	JOIST TYPE	JOIST WEIGHT PER FT. IN LBS.	TOTAL SAFE LOAD PER FT. IN LBS.
41 FEET Continued	24J	13.26	459 253	41 FEET Continued	36C	6.80	242 201	42 FEET Continued	28G	10.10	361 227
	24K	15.20	518 294		36D	7.74	292 242		28H	11.80	430 271
	26D	6.38	209 124		36E	8.57	347 287		28J	13.78	513 322
	26E	7.42	249 147		36F	9.84	411 341		28K	15.67	577 374
	26F	8.58	295 175		36G	11.31	490 407		30D	6.81	231 155
	26G	9.85	351 209		36H	13.33	584 486		30E	7.83	274 183
	26H	11.64	418 250						30F	8.99	325 218
	26J	13.55	498 298	42 FEET	22E12	8.50	199 96	30G	10.31	387 261	
	26K	15.48	562 346		22F	8.24	236 115	30H	12.01	463 312	
	28D	6.65	226 144		22G	9.60	282 138	30J	14.18	549 371	
	28E	7.68	268 171		22H	11.14	336 165	30K	16.21	619 430	
	28F	8.84	318 204		22J	13.07	400 197	32C	6.17	204 147	
	28G	10.13	379 244		22K	14.79	451 229	32D	7.13	247 177	
	28H	11.83	452 291		24D	6.15	184 97	32E	8.14	294 209	
	28J	13.94	538 346		24E	7.06	218 116	32F	9.17	347 249	
	28K	15.77	606 402		24F	8.82	258 138	32G	10.66	414 298	
	30C	5.87	201 138		24G	9.83	308 165	32H	12.38	493 356	
	30D	6.84	243 166		24H	11.34	367 197	32J	14.47	587 423	
	30E	7.85	288 197		24J	13.24	437 235	36C	6.78	231 187	
	30F	9.01	341 235		24K	15.15	493 273	36D	7.72	278 225	
	30G	10.34	406 281		26D	6.36	199 115	36E	8.53	331 267	
	30H	12.15	485 335		26E	7.39	237 136	36F	9.81	391 317	
	30J	14.24	576 399		26F	8.56	281 163	36G	11.28	467 379	
	32C	6.19	215 158		26G	9.82	335 195	36H	13.27	556 452	
	32D	7.16	259 190		26H	11.52	399 233				
	32E	8.16	308 225		26J	13.50	475 277	43 FEET	22E12	8.50	190 90
	32F	9.20	365 268		26K	15.43	535 321		22F	8.32	225 107
	32G	10.69	435 320		28D	6.63	215 134		22G	9.70	269 129
	32H	12.44	517 382		28E	7.65	256 159		22H	10.97	321 154
	32J	14.57	616 455		28F	8.82	303 189		22J	13.04	382 184





# OPEN WEB STEEL JOISTS

CLEAR SPAN	JOIST TYPE	JOIST WEIGHT PER FT. IN LBS.	TOTAL SAFE LOAD PER FT. IN LBS.	CLEAR SPAN	JOIST TYPE	JOIST WEIGHT PER FT. IN LBS.	TOTAL SAFE LOAD PER FT. IN LBS.	CLEAR SPAN	JOIST TYPE	JOIST WEIGHT PER FT. IN LBS.	TOTAL SAFE LOAD PER FT. IN LBS.
<b>43</b> FEET Continued	22K	14.84	431 213	<b>43</b> FEET Continued	32F	9.13	331 232	<b>44</b> FEET Continued	26J	13.46	433 241
	24E	7.06	208 108		32G	10.62	395 278		26K	15.33	488 280
	24F	8.82	246 128		32H	12.31	470 331		28D	6.58	196 117
	24G	9.83	294 154		32J	14.36	560 394		28E	7.61	233 138
	24H	11.31	350 184		32K	16.54	631 457		28F	8.78	276 165
	24J	13.21	417 219		36C	6.75	220 174		28G	10.03	329 197
	24K	15.02	471 254		36D	7.70	266 210		28H	11.74	392 235
	26E	7.37	226 127		36E	8.49	316 249		28J	13.67	467 280
	26F	8.54	268 152		36F	9.78	373 295		28K	15.61	526 325
	26G	9.92	319 182		36G	11.25	445 353		30D	6.77	211 134
	26H	11.49	380 217		36H	13.22	531 421		30E	7.79	250 159
	26J	13.48	453 258		36J	15.39	631 500		30F	8.96	296 190
	26K	15.38	511 300		<b>44</b> FEET	22E12	8.50	181 84	30G	10.25	353 227
	28D	6.60	205 125			22F	8.32	215 100	30H	11.95	421 271
	28E	7.63	244 148			22G	9.70	257 120	30J	14.08	500 323
	28F	8.80	289 176			22H	10.97	306 144	30K	15.91	564 374
	28G	10.07	344 211			22J	13.02	365 171	32D	7.09	225 154
	28H	11.77	411 252			22K	14.82	411 199	32E	8.11	268 182
	28J	13.73	489 300			24E	7.06	199 100	32F	9.09	316 217
	28K	15.77	551 348			24F	8.82	235 120	32G	10.59	378 259
	30D	6.79	221 144			24G	9.83	280 144	32H	12.29	449 309
	30E	7.81	262 171			24H	11.22	325 172	32J	14.38	535 368
	30F	8.97	310 203			24J	13.19	398 205	32K	16.44	602 426
	30G	10.28	369 243			24K	14.97	449 237	36C	6.73	210 163
	30H	11.98	441 290			26D	6.54	181 100	36D	7.68	254 196
	30J	14.13	523 346			26E	7.35	216 119	36E	8.45	302 232
	30K	16.01	591 401			26F	8.52	256 141	36F	9.74	357 276
	32C	6.14	195 137			26G	9.90	305 169	36G	11.22	425 330
	32D	7.11	236 165			26H	11.47	363 202	36H	13.16	507 393
	32E	8.13	280 195						36J	15.29	603 467





# OPEN WEB STEEL JOISTS

CLEAR SPAN	JOIST TYPE	JOIST WEIGHT PER FT. IN LBS.	TOTAL SAFE LOAD PER FT. IN LBS.	CLEAR SPAN	JOIST TYPE	JOIST WEIGHT PER FT. IN LBS.	TOTAL SAFE LOAD PER FT. IN LBS.	CLEAR SPAN	JOIST TYPE	JOIST WEIGHT PER FT. IN LBS.	TOTAL SAFE LOAD PER FT. IN LBS.
<b>44 FEET</b> <i>Continued</i>	42C	6.76	246 223	<b>45 FEET</b> <i>Continued</i>	30E	7.77	239 149	<b>46 FEET</b>	24E	7.06	182 88
	42D	7.90	297 268		30F	8.94	283 177		24F	8.80	215 105
	42E	9.05	353 318		30G	10.22	337 212		24G	9.83	257 126
	42F	10.42	417 378		30H	11.93	403 253		24H	11.22	306 150
	42G	12.00	497 451		30J	14.02	478 301		24J	13.14	364 179
	42H	13.90	592 537		30K	15.81	539 349		24K	14.94	411 208
					32C	6.08	178 119		26E	7.31	198 104
<b>45 FEET</b>	24E	7.06	190 94		32D	7.06	215 143		26F	8.49	234 124
	24F	8.82	225 112		32E	8.09	256 170		26G	9.87	279 148
	24G	9.83	268 134		32F	9.24	303 203		26H	11.41	332 177
	24H	11.22	317 160		32G	10.56	361 242		26J	13.32	396 211
	24J	13.16	381 191		32H	12.26	429 289		26K	15.24	446 245
	24K	14.92	430 222		32J	14.33	511 344		28D	6.53	179 102
	26B	4.94	117 63		32K	16.35	576 398		28E	7.57	213 121
	26C	5.68	144 77		36C	6.71	201 152		28F	8.75	253 144
	26D	6.53	173 93		36D	7.66	242 183		28G	9.97	301 173
	26E	7.33	207 111		36E	8.41	288 217		28H	11.69	359 206
	26F	8.50	244 132		36F	9.71	341 258		28J	13.60	427 245
	26G	9.88	291 158		36G	11.19	406 308		28K	15.52	481 284
	26H	11.44	347 189		36H	13.11	485 367		30D	6.72	193 118
	26J	13.44	414 225		36J	15.19	576 437		30E	7.75	229 139
	26K	15.28	466 261		36K	16.89	646 498		30F	8.92	271 166
	28D	6.55	188 109		42C	6.71	235 209		30G	10.18	323 199
	28E	7.59	223 129		42D	7.86	284 251		30H	11.90	386 237
	28F	8.76	264 154		42E	9.01	338 297		30J	13.86	457 282
	28G	10.00	314 184		42F	10.40	399 353		30K	15.72	516 327
	28H	11.72	375 220		42G	11.94	476 421		32D	7.04	206 134
	28J	13.62	447 262		42H	13.79	566 502		32E	8.07	245 159
	28K	15.56	503 304						32F	9.23	289 190
	30D	6.74	201 126						32G	10.53	345 227



CLEAR SPAN	JOIST TYPE	JOIST WEIGHT PER FT. IN LBS.	TOTAL SAFE LOAD PER FT. IN LBS.	CLEAR SPAN	JOIST TYPE	JOIST WEIGHT PER FT. IN LBS.	TOTAL SAFE LOAD PER FT. IN LBS.	CLEAR SPAN	JOIST TYPE	JOIST WEIGHT PER FT. IN LBS.	TOTAL SAFE LOAD PER FT. IN LBS.
<b>46 FEET</b> <i>Continued</i>	32H	12.23	411 270	<b>47 FEET</b> <i>Continued</i>	26K	15.19	427 229	<b>47 FEET</b> <i>Continued</i>	42E	8.94	310 261
	32J	14.28	489 322		28E	7.55	204 113		42F	10.21	365 310
	32K	16.26	551 373		28F	8.73	242 135		42G	11.82	436 370
	36C	6.68	192 142		28G	10.11	288 162		42H	13.56	519 441
	36D	7.64	232 171		28H	11.66	344 193		42J	16.11	618 524
	36E	8.37	276 203		28J	13.58	409 230	<b>48 FEET</b>	24F	8.80	197 92
	36F	9.67	326 241		28K	15.47	461 267		24G	9.83	236 111
	36G	11.16	389 288		30D	6.69	185 110		24H	11.22	281 132
	36H	13.05	464 344		30E	7.73	219 131		24J	13.09	335 157
	36J	15.09	551 409		30F	8.90	260 156		24K	14.90	378 183
	36K	17.27	621 474		30G	10.15	309 186		26F	8.45	215 109
	42C	7.20	225 195		30H	11.87	369 222		26G	9.84	256 130
	42D	7.82	272 235		30J	13.81	438 265		26H	11.35	305 156
	42E	8.98	323 278		30K	15.87	494 307		26J	13.28	363 185
	42F	10.37	381 330		32D	7.02	197 126		26K	15.14	410 215
	42G	11.88	455 395		32E	8.05	235 149		28E	7.53	196 106
	42H	13.68	542 470		32F	9.21	277 178		28F	8.71	232 127
	42J	16.20	645 559		32G	10.50	331 213		28G	10.09	276 152
<b>47 FEET</b>	24E	7.06	174 82		32H	12.21	394 254		28H	11.63	329 181
	24F	8.80	206 98		32J	14.23	468 302		28J	13.55	393 216
	24G	9.83	246 118		32K	16.16	528 350		28K	15.42	442 250
	24H	11.22	293 141		36D	7.62	222 160		30E	7.71	210 123
	24J	13.12	349 168		36E	8.34	264 190		30F	8.89	249 146
	24K	14.92	394 195		36F	9.64	312 226		30G	10.12	296 175
	26E	7.28	189 97		36G	11.14	373 270		30H	11.85	354 209
	26F	8.47	224 116		36H	12.88	444 322		30J	13.75	420 248
	26G	9.85	267 139		36J	14.99	528 383		30K	15.83	474 288
	26H	11.38	318 166		36K	16.86	592 437		32D	7.00	189 118
	26J	13.30	379 198		42C	7.18	216 183		32E	8.03	225 140
					42D	7.78	260 220				



CLEAR SPAN	JOIST TYPE	JOIST WEIGHT PER FT. IN LBS.	TOTAL SAFE LOAD PER FT. IN LBS.	CLEAR SPAN	JOIST TYPE	JOIST WEIGHT PER FT. IN LBS.	TOTAL SAFE LOAD PER FT. IN LBS.	CLEAR SPAN	JOIST TYPE	JOIST WEIGHT PER FT. IN LBS.	TOTAL SAFE LOAD PER FT. IN LBS.
<b>48</b> FEET <i>Continued</i>	32F	9.19	266	<b>49</b> FEET <i>Continued</i>	28H	11.61	316	<b>50</b> FEET	26F	8.41	198
	32G	10.47	167 317		28J	13.53	170 377		26G	9.81	96 236
	32H	12.18	199 377		28K	15.37	203 424		26H	11.30	115 281
	32J	14.18	238 449		30E	7.69	235 201		26J	13.23	138 335
	32K	16.07	283 506		30F	8.87	115 239		26K	15.04	164 377
	36D	7.60	328 213		30G	10.09	137 284		28E	7.48	190 180
	36E	8.61	151 253		30H	11.82	164 340		28F	8.67	94 214
	36F	9.61	179 300		30J	13.73	196 403		28G	10.06	112 255
	36G	11.11	212 357		30K	15.66	233 455		28H	11.58	134 304
	36H	12.83	254 426		32D	6.97	271 181		28J	13.51	160 362
	36J	14.89	303 506		32E	8.01	111 216		28K	15.32	191 407
	36K	16.84	360 568		32F	9.18	132 255		30E	7.67	221 193
	36M	20.84	410 629		32G	10.44	157 304		30F	8.85	108 229
	42C	7.16	500 207		32H	12.16	187 362		30G	10.06	129 273
	42D	7.73	172 250		32J	14.13	224 431		30H	11.79	155 326
	42E	8.91	206 297		32K	15.98	266 485		30J	13.71	185 387
	42F	10.18	245 350		36D	7.58	308 204		30K	15.62	220 437
	42G	11.76	291 418		36E	8.59	141 243		32E	7.99	255 207
	42H	13.45	347 497		36F	9.57	168 287		32F	9.16	124 245
	42J	16.01	414 593		36G	11.08	200 343		32G	10.41	147 292
<b>49</b> FEET	26E	7.24	174		36H	12.78	238 409		32H	12.13	176 348
	26F	8.43	86 206		36J	14.79	284 486		32J	14.08	211 414
	26G	9.82	102 246		36K	16.82	338 545		32K	16.04	250 466
	26H	11.33	122 293		36M	20.33	386 603		36D	7.56	290 196
	26J	13.25	146 349		42D	7.69	470 239		36E	8.58	133 233
	26K	15.06	174 393		42E	8.87	194 285		36F	9.54	158 276
	28E	7.51	202 188		42F	10.15	230 336		36G	11.05	188 329
	28F	8.69	100 223		42G	11.74	273 401		36H	12.76	224 392
	28G	10.08	119 265		42H	13.64	326 477		36J	14.97	268 467
			143		42J	15.92	389 569		36K	16.80	318 523
							462				363





# OPEN WEB STEEL JOISTS

CLEAR SPAN	JOIST TYPE	JOIST WEIGHT PER FT. IN LBS.	TOTAL SAFE LOAD PER FT. IN LBS.	CLEAR SPAN	JOIST TYPE	JOIST WEIGHT PER FT. IN LBS.	TOTAL SAFE LOAD PER FT. IN LBS.	CLEAR SPAN	JOIST TYPE	JOIST WEIGHT PER FT. IN LBS.	TOTAL SAFE LOAD PER FT. IN LBS.
<b>50 FEET</b> <i>Continued</i>	36M	20.31	579	<b>52 FEET</b> <i>Continued</i>	36F	9.47	255	<b>54 FEET</b> <i>Continued</i>	36G	10.94	282
	42D	7.65	442		36G	10.99	167		36H	12.66	178
	42E	8.84	230		36H	12.71	304		36J	14.79	336
	42F	10.12	183		36J	14.88	199		36K	16.73	212
	42G	11.72	273		36K	16.77	238		36M	20.26	252
	42H	13.59	216		36M	20.29	283		36N	20.89	288
	42J	15.82	257		36N	20.96	323		36P	23.00	297
	42K	17.23	307		42D	7.57	393		42E	8.70	351
			366		42E	8.77	415		42F	10.00	371
<b>52 FEET</b>	26G	9.77	435		42F	10.06	615		42G	11.63	390
	26H	11.24	501		42G	11.68	162		42H	13.39	277
	26J	13.28	102		42H	13.49	192		42J	15.44	204
	26K	15.00	122		42J	15.63	229		42K	17.68	244
	28E	7.44	146		42K	17.20	273		42M	21.14	293
	28F	8.64	169		42M	21.22	290				
	28G	10.03	84				387	<b>56 FEET</b>	28G	9.97	203
	28H	11.52	100				445		28H	11.41	95
	28J	13.46	119				545		28J	13.37	114
	28K	15.27	142	<b>54 FEET</b>	28G	10.00	218		28K	15.19	288
	30F	8.82	170		28H	11.47	106		30G	10.15	136
	30G	10.20	197		28J	13.41	127		30H	11.63	157
	30H	11.74	212		28K	15.23	151		30J	13.57	110
	30J	13.66	115		30G	10.18	176		30K	15.39	260
	30K	15.53	137		30H	11.69	123		32G	10.45	131
	32F	9.13	164		30J	13.62	146		32H	11.98	156
	32G	10.35	195		30K	15.43	174		32J	13.91	181
	32H	12.08	226		32F	9.10	202		32K	15.77	233
	32J	14.00	131		32G	10.29	237		36F	9.34	125
	32K	15.95	157		32H	12.03	117		36G	10.88	150
	36E	8.54	187		32J	13.95	140		36H	12.61	178
			223		32K	15.86	167				
			258		36F	9.41	199				
			216				230				
			140				202				
							117				
							140				
							298				
							167				
							355				
							199				
							230				
							237				
							149				



GWS

OPEN WEB STEEL JOISTS

CLEAR SPAN	JOIST TYPE	JOIST WEIGHT PER FT. IN LBS.	TOTAL SAFE LOAD PER FT. IN LBS.	CLEAR SPAN	JOIST TYPE	JOIST WEIGHT PER FT. IN LBS.	TOTAL SAFE LOAD PER FT. IN LBS.	CLEAR SPAN	JOIST TYPE	JOIST WEIGHT PER FT. IN LBS.	TOTAL SAFE LOAD PER FT. IN LBS.
56 FEET Continued	36J	14.58	372 226	58 FEET Continued	36P	22.86	530 315	60 FEET Continued	42G	11.36	267 178
	36K	16.70	417 258		36Q	25.36	617 353		42H	13.19	318 212
	36M	20.23	462 315		42E	8.56	203 139		42J	15.27	379 251
	36N	20.81	524 333		42F	9.89	240 165		42K	17.08	427 290
	36P	22.93	569 350		42G	11.40	286 197		42M	20.60	475 355
	42E	8.63	218 154		42H	13.18	341 234		42N	22.11	538 376
	42F	9.95	257 183		42J	15.06	406 278		42P	23.44	587 395
	42G	11.45	307 218		42K	17.11	457 321		48M	21.13	547 470
	42H	13.29	365 260		42M	20.62	508 393		48N	22.73	620 498
	42J	15.25	435 309		42N	22.29	576 416		54M	22.31	619 603
	42K	17.51	490 358		42P	23.50	628 437				
	42M	20.65	545 437		48M	21.63	585 521				
	42N	22.36	618 462								
	48M	21.70	628 579								
58 FEET	30G	10.12	203 99	60 FEET	30H	11.53	226 107	62 FEET	32H	11.82	226 110
	30H	11.58	242 118		30J	13.48	269 127		32J	13.78	269 131
	30J	13.53	287 141		30K	15.31	303 147		32K	15.61	303 152
	30K	15.35	324 163		32G	10.40	203 102		36G	10.71	214 117
	32G	10.43	217 113		32H	11.87	241 122		36H	12.47	255 140
	32H	11.92	258 135		32J	13.82	287 145		36J	14.41	303 167
	32J	13.87	307 160		32K	15.65	324 168		36K	16.60	340 190
	32K	15.68	346 186		36G	10.77	228 130		36M	20.14	377 232
	36F	9.61	205 120		36H	12.52	272 155		36N	21.19	428 245
	36G	10.83	244 144		36J	14.45	324 184		36P	22.72	464 258
	36H	12.57	292 171	36K	16.63	363 210	36Q	25.25	540 288		
	36J	14.48	347 204	36M	20.17	402 256	36R	27.60	577 320		
	36K	16.67	389 232	36N	21.22	457 271	42F	9.77	210 135		
	36M	20.20	431 283	36P	22.79	495 284	42G	11.31	250 161		
	36N	21.64	489 300	36Q	25.31	576 318	42H	13.15	298 192		
				36R	27.65	616 353	42J	15.19	355 228		
				42F	9.83	224 149	42K	17.06	400 263		
							42M	20.57	444 322		
							42N	22.04	504 340		



CLEAR SPAN	JOIST TYPE	JOIST WEIGHT PER FT. IN LBS.	TOTAL SAFE LOAD PER FT. IN LBS.	CLEAR SPAN	JOIST TYPE	JOIST WEIGHT PER FT. IN LBS.	TOTAL SAFE LOAD PER FT. IN LBS.	CLEAR SPAN	JOIST TYPE	JOIST WEIGHT PER FT. IN LBS.	TOTAL SAFE LOAD PER FT. IN LBS.	
<b>62 FEET</b> <i>Continued</i>	42P	23.38	550 358	<b>64 FEET</b> <i>Continued</i>	48N	22.61	544 410	<b>66 FEET</b> <i>Continued</i>	60M	22.76	572 565	
	42Q	25.75	636 400		48P	23.83	596 431		60N	24.32	647 596	
	48M	21.11	512 427		54M	22.18	544 497	<b>68 FEET</b>	36H	12.33	212 106	
	48N	22.67	580 451		54N	23.34	616 525		36J	14.29	252 126	
	48P	23.88	635 474		60M	22.82	608 619		36K	16.50	283 144	
	54M	22.24	580 547		<b>66 FEET</b>	36H	12.38		225 116	36M	20.05	313 176
	60M	22.88	648 681			36J	14.33		268 138	36N	21.11	355 186
<b>64 FEET</b>	32H	11.77	212 100	36K		16.53	300 158		36P	22.24	386 195	
	32J	13.74	252 119	36M		20.08	332 192		36Q	24.97	449 219	
	32K	15.57	284 138	36N		21.14	377 203		36R	27.34	480 242	
	36G	10.66	201 107	36P		22.26	409 214		42G	11.16	208 122	
	36H	12.43	239 127	36Q		25.02	476 239		42H	12.90	248 145	
	36J	14.37	285 151	36R		27.50	509 265	42J	14.93	295 173		
	36K	16.57	319 173	42G		11.21	221 133	42K	16.97	332 199		
	36M	20.11	353 211	42H		12.95	263 159	42M	20.50	369 244		
	36N	21.16	401 223	42J	15.02	313 189	42N	21.54	419 258			
	36P	22.66	435 234	42K	17.00	352 218	42P	23.08	457 271			
	36Q	25.08	506 262	42M	20.52	392 267	42Q	25.60	528 303			
	36R	27.55	542 291	42N	21.56	445 282	42R	27.96	568 336			
	42G	11.26	235 146	42P	23.14	485 296	48M	20.92	426 324			
	42H	13.12	280 174	42Q	25.65	561 332	48N	22.49	482 342			
	42J	15.10	333 207	42R	28.28	603 367	48P	23.72	528 359			
	42K	17.03	375 239	48M	20.94	452 354	48Q	26.42	608 402			
	42M	20.55	417 293	48N	22.55	512 374	54M	21.90	482 414			
	42N	21.97	473 309	48P	23.77	561 393	54N	23.22	546 438			
	42P	23.21	516 325	48Q	26.50	646 439	54P	24.78	599 460			
	42Q	25.70	597 364	54M	21.97	512 453	60M	22.71	538 516			
	42R	28.36	642 403	54N	23.28	579 478	60N	24.23	609 545			
	48M	20.96	481 388	54P	24.87	636 503	66M	23.78	595 629			



CLEAR SPAN	JOIST TYPE	JOIST WEIGHT PER FT. IN LBS.	TOTAL SAFE LOAD PER FT. IN LBS.	CLEAR SPAN	JOIST TYPE	JOIST WEIGHT PER FT. IN LBS.	TOTAL SAFE LOAD PER FT. IN LBS.	CLEAR SPAN	JOIST TYPE	JOIST WEIGHT PER FT. IN LBS.	TOTAL SAFE LOAD PER FT. IN LBS.
<b>70 FEET</b>	36H	12.28	200	<b>72 FEET</b>	36J	14.21	225	<b>74 FEET</b> Continued	42P	22.60	386
	36J	14.25	238		36K	16.05	253		42Q	25.33	446
	36K	16.47	267		36M	19.99	279		42R	27.82	480
	36M	20.02	295		36N	21.06	317		48M	20.85	359
	36N	21.08	335		36P	22.19	344		48N	21.90	407
	36P	22.21	364		36Q	24.85	400		48P	23.56	446
	36Q	24.91	423		36R	27.23	428		48Q	25.95	514
	36R	27.28	453		42J	14.76	263		48R	28.63	555
	42H	12.86	234		42M	20.44	329		54M	21.39	407
	42J	14.85	278		42N	21.50	373		54N	22.91	461
	42K	16.94	313		42P	22.96	407		54P	24.15	506
	42M	20.47	349		42Q	25.50	471		54Q	27.05	581
	42N	21.52	395		42R	27.87	507		54R	29.50	629
	42P	23.02	431		48M	20.87	380		60M	22.53	455
	42Q	25.55	499		48N	22.04	430		60N	23.70	514
	42R	27.91	536		48P	23.61	471		60P	25.31	566
	48M	20.89	402		48Q	25.99	542		60Q	28.34	648
	48N	22.43	455		48R	28.71	586		66M	23.25	502
	48P	23.66	498		54M	21.40	430		66N	25.13	568
	48Q	26.34	574		54N	22.97	487		66P	26.43	626
	48R	28.78	620		54P	24.35	534		72M	24.66	550
	54M	21.84	455		54Q	27.13	614		72N	26.09	621
	54N	23.02	515		60M	22.59	480				
	54P	24.69	565		60N	24.05	543	<b>76 FEET</b>	42M	20.39	296
	54Q	27.20	649		60P	25.39	598		42N	21.45	335
	60M	22.65	508		66M	23.31	530		42P	22.58	366
	60N	24.14	575		66N	25.20	600		42Q	25.28	423
	60P	25.47	633						42R	27.78	455
	66M	23.36	561						48M	20.83	341
	66N	25.27	635						48N	21.88	386
				<b>74 FEET</b>	42M	20.42	312				
					42N	21.47	354				





# OPEN WEB STEEL JOISTS

CLEAR SPAN	JOIST TYPE	JOIST WEIGHT PER FT. IN LBS.	TOTAL SAFE LOAD PER FT. IN LBS.	CLEAR SPAN	JOIST TYPE	JOIST WEIGHT PER FT. IN LBS.	TOTAL SAFE LOAD PER FT. IN LBS.	CLEAR SPAN	JOIST TYPE	JOIST WEIGHT PER FT. IN LBS.	TOTAL SAFE LOAD PER FT. IN LBS.		
76 FEET Continued	48P	23.50	423 257	78 FEET Continued	54P	24.05	455 305	80 FEET Continued	54R	29.30	539 349		
	48Q	25.90	487 288		54Q	26.90	523 340		60M	22.19	389 317		
	48R	28.56	526 319		54R	29.37	567 377		60N	23.55	440 335		
	54M	21.23	386 297		60M	22.25	409 342		60P	25.07	484 352		
	54N	22.86	437 313		60N	23.60	463 361		60Q	27.60	555 393		
	54P	24.10	480 329		60P	25.15	509 379		60R	30.59	603 435		
	54Q	26.98	551 368		60Q	27.97	583 424		66M	23.10	430 387		
	54R	29.43	597 408		60R	30.68	634 469		66N	24.56	486 408		
	60M	22.47	431 370		66M	23.15	452 417		66P	26.23	536 429		
	60N	23.65	488 391		66N	24.64	511 440		66Q	28.96	612 479		
	60P	25.23	537 410		66P	26.30	564 463		72M	24.16	470 463		
	60Q	28.03	615 458		66Q	29.04	644 517		72N	25.69	532 489		
	66M	23.20	476 451		72M	24.51	495 499		72P	27.49	587 513		
	66N	24.72	538 476		72N	25.76	559 527		85 FEET	48M	20.73	272 166	
	66P	26.36	594 500		72P	27.54	618 554			48N	21.79	308 175	
	72M	24.59	521 540		80 FEET	42M	20.35			267 150	48P	22.92	338 184
	72N	26.03	589 570			42N	21.41			302 159	48Q	25.69	389 205
78 FEET	42M	20.37	281 162	42P		22.54	330 167	48R		28.08	420 228		
	42N	21.43	318 171	42Q		25.17	382 186	54M		21.14	308 212		
	42P	22.56	347 180	42R		27.56	410 206	54N		22.18	349 224		
	42Q	25.22	401 201	48M		20.79	307 199	54P		23.87	383 235		
	42R	27.73	432 223	48N		21.84	348 210	54Q		26.27	440 263		
	48M	20.81	323 214	48P		22.96	381 221	54R		28.98	477 291		
	48N	21.86	366 227	48Q		25.80	439 246	60M	21.73	344 264			
	48P	23.45	401 238	48R		28.19	474 273	60N	23.25	390 279			
	48Q	25.85	462 266	54M	21.19	348 255	60P	24.67	429 293				
	48R	28.49	499 295	54N	22.75	394 269	60Q	27.42	491 327				
54M	21.21	366 275	54P	24.00	433 282	60R	30.21	534 363					
54N	22.80	415 290	54Q	26.68	497 315	66M	22.97	380 322					



CLEAR SPAN	JOIST TYPE	JOIST WEIGHT PER FT. IN LBS.	TOTAL SAFE LOAD PER FT. IN LBS.	CLEAR SPAN	JOIST TYPE	JOIST WEIGHT PER FT. IN LBS.	TOTAL SAFE LOAD PER FT. IN LBS.	CLEAR SPAN	JOIST TYPE	JOIST WEIGHT PER FT. IN LBS.	TOTAL SAFE LOAD PER FT. IN LBS.	
<b>85 FEET</b> <i>Continued</i>	66N	24.14	430 340	<b>90 FEET</b> <i>Continued</i>	66R	31.09	527 372	<b>95 FEET</b> <i>Continued</i>	72Q	29.02	475 342	
	66P	25.73	475 357		72M	23.58	371 325		72R	31.77	518 379	
	66Q	28.75	542 399		72N	25.36	420 343		<b>100 FEET</b>	54M	21.00	223 130
	66R	31.28	590 442		72P	26.69	464 360			54N	22.05	252 138
	72M	23.69	417 386		72Q	29.42	529 402	54P		23.18	277 145	
	72N	25.52	471 407		72R	31.95	577 445	54Q		25.95	318 161	
	72P	26.84	520 428		<b>95 FEET</b>	48M	20.63	218 119		54R	28.36	344 179
	72Q	29.82	593 478			48N	21.70	247 125		60M	21.45	249 162
	72R	32.62	647 529			48P	22.83	270 132	60N	22.49	281 171	
	<b>90 FEET</b>	48M	20.68			243 140	48Q	25.07	311 147	60P	24.16	310 180
48N		21.74	275 147	48R		27.86	336 163	60Q	26.58	355 201		
48P		22.88	301 155	54M		21.04	247 152	60R	29.25	385 223		
48Q		25.57	347 173	54N		22.09	279 160	66M	22.58	275 198		
48R		27.97	375 191	54P		23.22	307 169	66N	23.80	311 209		
54M		21.09	275 179	54Q		26.06	352 188	66P	25.07	343 219		
54N		22.13	311 189	54R		28.46	382 209	66Q	27.76	392 245		
54P		23.75	342 198	60M	21.49	276 189	66R	30.59	426 271			
54Q		26.16	393 221	60N	23.60	312 200	72M	23.34	301 237			
54R		28.80	425 245	60P	24.28	343 210	72N	24.53	340 250			
60M		21.54	307 222	60Q	26.91	393 234	72P	26.39	376 263			
60N		23.13	348 235	60R	29.58	427 260	72Q	28.89	429 293			
60P		24.39	383 247	66M	22.71	304 231	72R	31.59	467 325			
60Q		27.25	438 276	66N	23.91	344 244	<b>105 FEET</b>	54M	20.95	202 113		
60R		29.74	476 306	66P	25.17	380 256		54N	22.01	229 119		
66M		22.84	339 271	66Q	27.92	434 286		54P	23.14	251 125		
66N	24.03	384 287	66R	30.72	473 316	54Q		25.84	288 139			
66P	25.55	423 301	72M	23.46	333 276	54R		28.26	312 155			
66Q	28.40	484 336	72N	24.63	377 292	60M		21.41	226 140			
			72P	26.54	416 307							





# OPEN WEB STEEL JOISTS

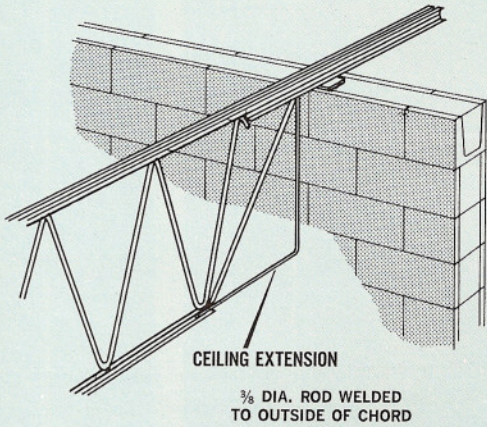
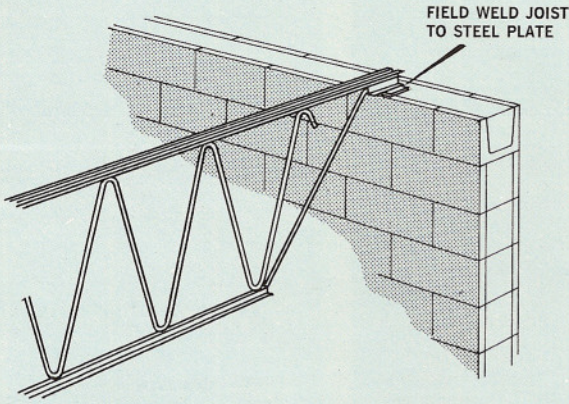
CLEAR SPAN	JOIST TYPE	JOIST WEIGHT PER FT. IN LBS.	TOTAL SAFE LOAD PER FT. IN LBS.	CLEAR SPAN	JOIST TYPE	JOIST WEIGHT PER FT. IN LBS.	TOTAL SAFE LOAD PER FT. IN LBS.	CLEAR SPAN	JOIST TYPE	JOIST WEIGHT PER FT. IN LBS.	TOTAL SAFE LOAD PER FT. IN LBS.
<b>105 FEET</b> <i>Continued</i>	60N	22.45	255	<b>115 FEET</b>	60M	21.32	188	<b>120 FEET</b> <i>Continued</i>	72N	24.12	236
	60P	24.05	148 281		60N	22.38	107 213		72P	25.41	145 261
	60Q	26.48	156 322		60P	23.51	113 234		72Q	27.81	152 297
	60R	28.89	173 350		60Q	26.28	118 268		72R	30.87	170 324
	66M	22.21	192 249		60R	28.71	132 291				188
	66N	23.69	171 282		66M	21.98	146 208				
	66P	24.96	180 311		66N	23.46	130 235				
	66Q	27.60	190 355		66P	24.76	137 259				
	66R	30.11	212 387		66Q	27.18	144 296				
	72M	23.23	234 273		66R	29.82	161 322				
	72N	24.43	205 308		72M	23.00	178 227				
	72P	25.68	216 341		72N	24.22	156 257				
	72Q	28.76	227 389		72P	25.50	165 284				
	72R	31.23	253 424		72Q	28.50	173 324				
			280		72R	30.99	193 353				
<b>110 FEET</b>	60M	21.37	205	<b>120 FEET</b>	60M	21.27	173				
	60N	22.41	122 232		60N	22.34	94 195				
	60P	23.55	129 256		60P	23.48	99 215				
	60Q	26.38	135 293		60Q	26.18	104 246				
	60R	28.80	151 318		60R	28.61	116 268				
	66M	22.18	167 227		66M	21.94	129 191				
	66N	23.58	149 257		66N	23.13	115 216				
	66P	24.86	157 283		66P	24.66	121 238				
	66Q	27.27	165 324		66Q	27.09	127 272				
	66R	29.97	184 352		66R	29.51	142 296				
	72M	23.11	204 249		72M	22.60	157 209				
	72N	24.32	178 281				137				
	72P	25.59	188 310								
	72Q	28.63	197 354								
	72R	31.11	220 386								
			244								



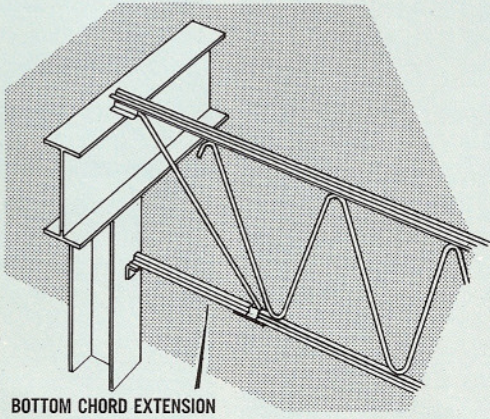
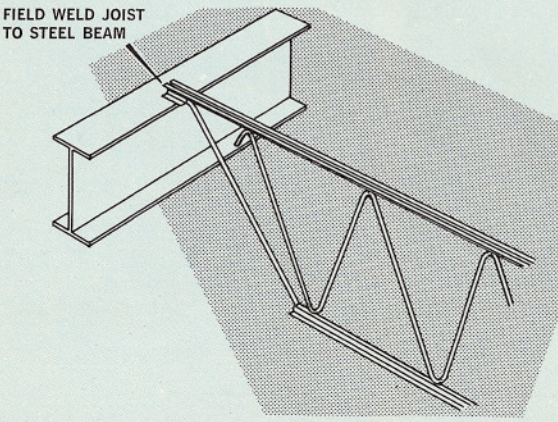


# OPEN WEB STEEL JOISTS

## JOIST DETAILS AND SUPPORTS



### CONCRETE OR MASONRY BEARING



### STEEL BEARING

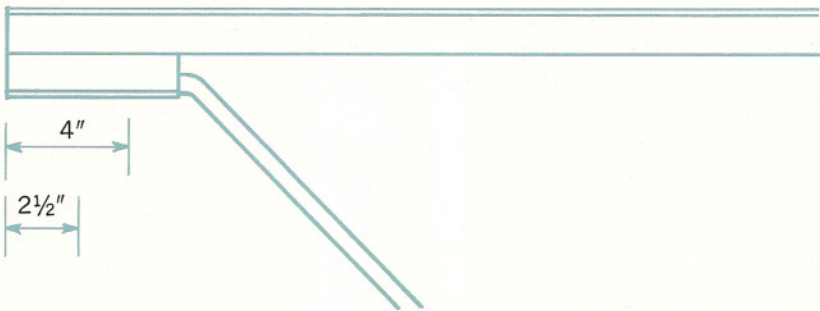
#### JOIST SEAT DETAILS

For short and intermediate span joists  $A = 2\frac{1}{2}"$  For long span joists  $A = 5"$



Minimum bearing on concrete and masonry

Min. bearing on steel







# OPEN WEB STEEL JOISTS

## DUCT DIMENSIONS THROUGH JOISTS

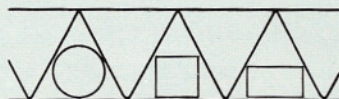


### SHORT SPAN

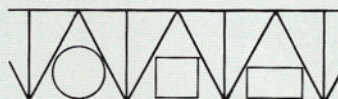
### INTERMEDIATE SPAN

### LONG SPAN

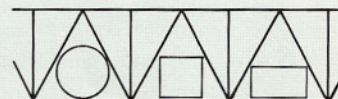
JOIST



JOIST



JOIST



8	4 5/8 Dia.	4 Sq.	2 x12 3/4	18	14 Dia.	11 3/4 Sq.	8 x 21 1/2	36	27 Dia.	19 Sq.	15 1/2 x 42
10	6 3/8 Dia.	5 1/4 Sq.	3 x12 3/4	20	15 1/2 Dia.	12 3/4 Sq.	9 x 21 1/2	42	31 Dia.	22 Sq.	18 3/4 x 42
12	7 3/4 Dia.	6 1/4 Sq.	3 3/4 x12 3/4	22	17 Dia.	13 3/4 Sq.	10 x 21 1/2	48	35 Dia.	24 3/4 Sq.	22 x 42
14	9 Dia.	7 3/8 Sq.	4 3/4 x12 3/4	24	18 Dia.	14 1/2 Sq.	11 x 21 1/2	54	38 1/2 Dia.	27 1/4 Sq.	25 1/4 x 42
16	10 1/8 Dia.	8 1/8 Sq.	5 1/2 x12 3/4	26	19 Dia.	15 1/2 Sq.	12 x 21 1/2	60	41 1/2 Dia.	29 1/4 Sq.	28 1/4 x 42
18	11 1/8 Dia.	9 Sq.	6 1/4 x12 3/4	28	20 Dia.	16 1/4 Sq.	13 x 21 1/2	66	44 Dia.	31 Sq.	31 1/2 x 42
20	12 Dia.	9 5/8 Sq.	7 1/4 x12 3/4	30	21 Dia.	17 Sq.	14 x 21 1/2	72	46 Dia.	32 1/2 Sq.	34 1/2 x 42
22	12 5/8 Dia.	10 1/4 Sq.	8 x12 3/4	32	22 Dia.	17 3/4 Sq.	15 x 21 1/2				
24	13 1/4 Dia.	10 3/4 Sq.	9 x12 3/4	34	23 Dia.	18 1/2 Sq.	16 x 21 1/2				
				36	24 Dia.	19 Sq.	17 x 21 1/2				
				38	24 1/2 Dia.	19 3/4 Sq.	18 x 21 1/2				
				40	25 1/4 Dia.	20 1/4 Sq.	19 x 21 1/2				

The rectangular duct dimensions are calculated for maximum area in duct. All dimensions in table are in inches.





# OPEN WEB STEEL JOISTS

## SPECIFICATION GUIDE

### SPECIFICATION GUIDE

#### GENERAL

Open web steel joists shown on plans or mentioned in specifications shall be **GWS** Open Web Steel Joists or approved equal.

#### DESIGN AND WORKMANSHIP

Joists and bridging shall be designed, fabricated, and erected in accordance with the latest issue of C.S.A. S16 "Steel Structures for Buildings."

All welding design and practice shall be in accordance with the latest issue of C.S.A. W59. The steel joist manufacturer shall be fully approved by the Canadian Welding Bureau in accordance with the latest issue of C.S.A. W47.

#### MATERIALS

**Steel:** Steel used in the manufacture of joists shall be of a chemical composition and thickness suitable for resistance to electric arc welding, and shall have proven physical characteristics capable of satisfying the applied loads.

**Painting:** Joists shall be painted by dipping or spraying with a suitable primer before shipping.

**Bridging:** Shall be in accordance with the latest issue of C.S.A. S16 and can be either steel or concrete type.

#### ERECTION

**Joists:** Joists shall be set level and true with bearings and anchorages in accordance with the latest issue of C.S.A. S16.

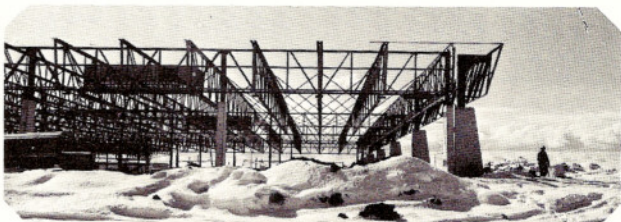
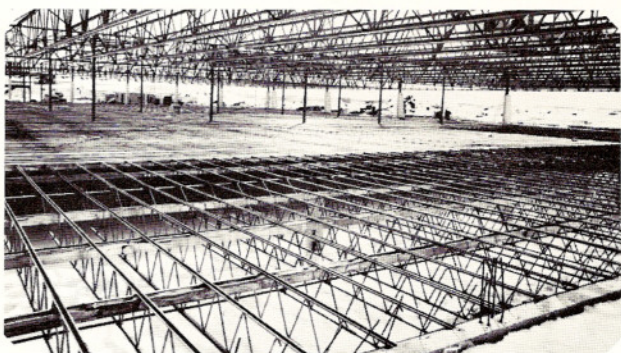
**Bridging:** Joists shall be properly bridged before the application of any construction loads.

#### DECK AND SLABS

The material used to form deck or slabs shall be capable of spanning the space between joists, and shall be sufficiently anchored to the top chord, so as to provide lateral support.

#### INSPECTION AND TESTS

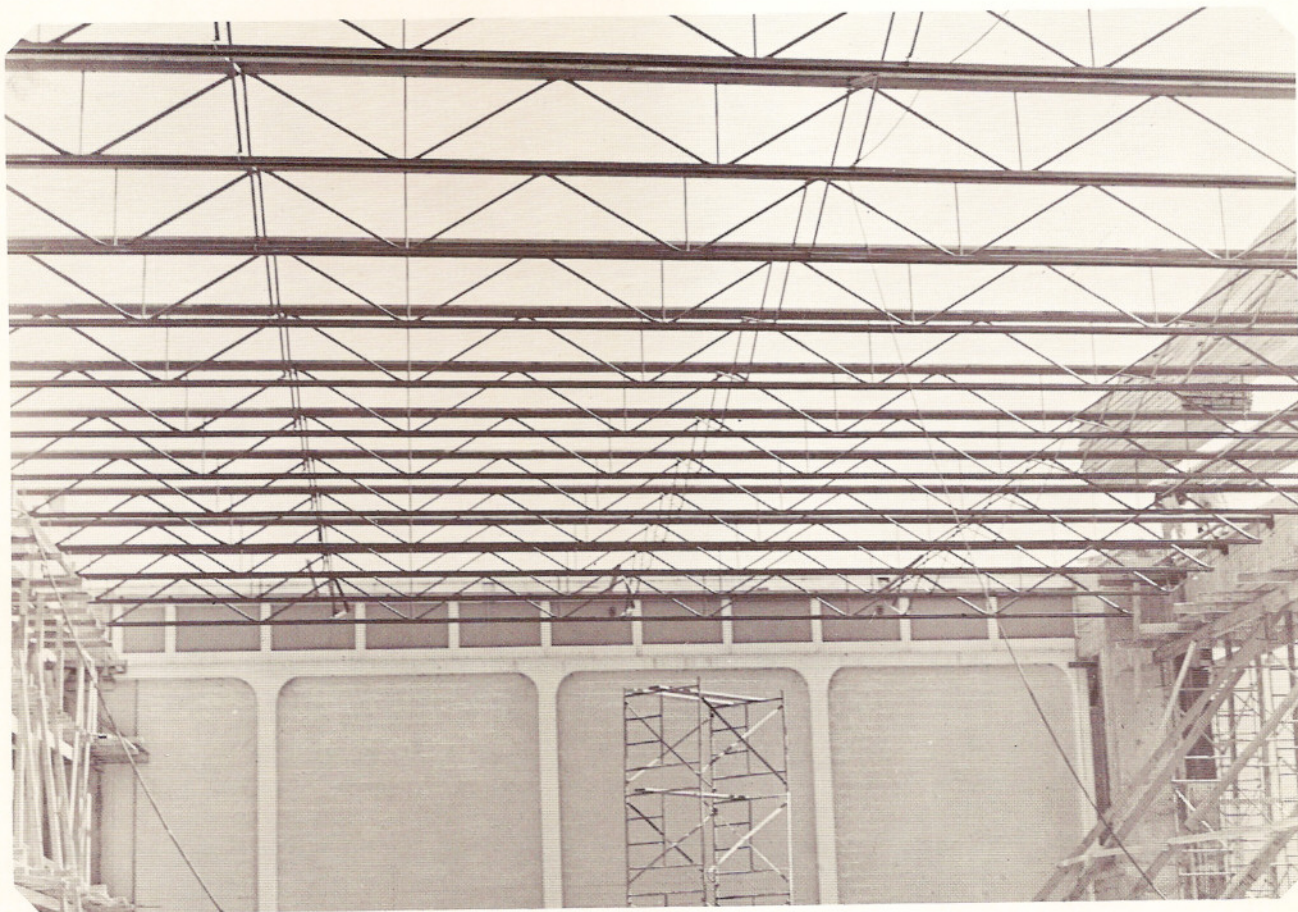
Material and workmanship will be subject to inspection at any time by qualified inspectors representing the owner.







## OPEN WEB STEEL JOISTS



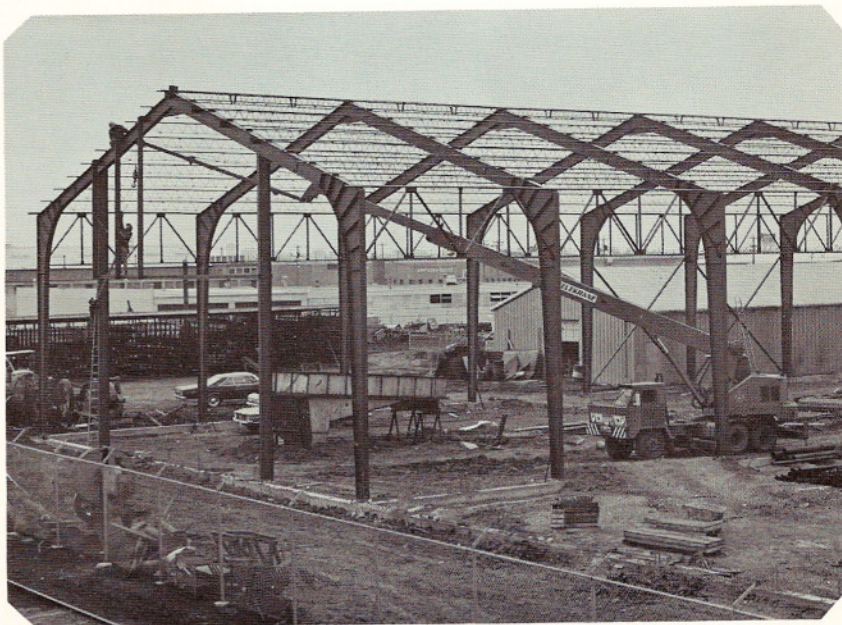
*Upper Left: Wood decking on nailers secured to top chord of steel joists spaced 6'8" on centres.*

*Left Middle: Steel floor decking applied on steel joists at large school complex in Grande Prairie, Alberta.*

*Two Lower Photos at Left: Roof framing edge detail indicates possibilities in conjunction with steel joists.*

*Above Photo: Long span steel joists used at the Arbutus Club in Vancouver, B.C.*

*Photo at Right: Open web steel joists used as purlins on rigid frame structure.*







**GREAT WEST STEEL INDUSTRIES LTD.**

**AL REGION**

Box 2430  
Saskatoon, Alberta  
S7N 1A7  
(306) 653-2847  
Telex 034-2644

P.O. Box 239, Bldg. 59, Airport  
**Saskatoon, Saskatchewan**  
(306) 653-2847  
Telex 034-2644

**PACIFIC REGION**

6010 Trapp Road  
**New Westminster, B.C.**  
(604) 524-4421  
Telex 043-54741

#412, 1200 Westlake Ave. N.  
**Seattle, Washington 98109 U.S.A.**

P.O. Box 427  
**Fontana, California 92335, U.S.A.**  
(714) 829-0581  
Telex 0067-6417

Box 5688, Station "A"  
3rd Avenue