

PERFORMANCE TEST REPORT

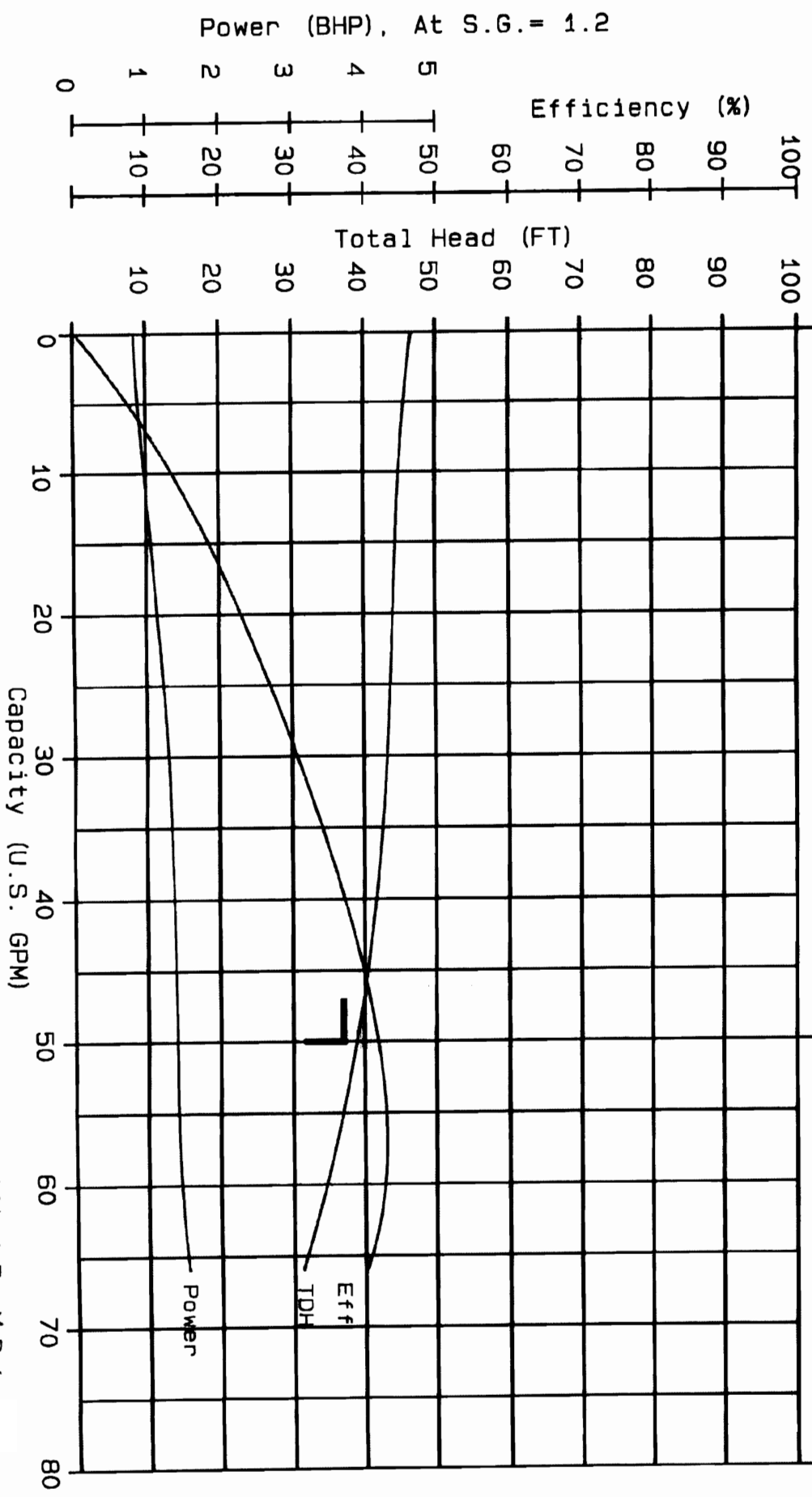
Customer:						Test Type: NON-WITNESS				
ORDER > Serial No.: 712F682WAR INFO. > Quantity: 1 > Ship Date:						Model: 3196STX Size: 1X1.5-8 Mat'l: HAST C Seal Desc:		Imp. Dia: 6.125 Ord. Dia: 6.125 Dwg. No.: 76793 Patt. No.: 56208		
TEST > Location: 1 INFO. > Torque Shaft: 500 in-lb > Rotation: RH						Flow Meter: 2 MAG Suct. Gage: 150ABS Disch. Gage: 83 ft		Atm. Press.: 33.6ft Suct. I.D.: 1.61 in Disch. I.D.: 1.035 in		
RATING > Rated Speed: 1750 rpm > Rated Flow: 50 gpm INFO. > Rated Head: 37ft > Rated Eff.: 40.5 %						BEP Flow: 55 gpm Cust. S.G.: 1.200		Cust. Mtr: 2, SF 0.00 Seal Type: Double Cartridge Seal Correction: 0.33Hp Seal Size: 1.375 in.		
Remarks:										
***** Performance at Test Speed and Spec. Gravity=1.0 *****										
Pt No	Suct. Pres. (ft ABS)	Water Temp (deg F)	Vel. Head (ft)	Disch. Head (ft)	Total Head (ft)	Capacity (US gpm)	Torque (in-lb)	Power (bhp)	Speed (rpm)	Eff (%)
1	46.4	70.2	0.0	46.5	46.5	0.0	27.2	0.8	1750	0
2	42.7	70.2	0.2	45.3	45.5	11.0	30.0	0.8	1751	15
3	39.1	70.2	0.9	42.3	43.2	22.0	39.5	1.1	1750	22
4	40.1	70.2	2.0	40.8	42.8	33.0	40.2	1.1	1750	32
5	36.6	70.1	4.1	36.9	41.0	46.8	43.0	1.2	1750	40
6	36.2	70.1	4.7	35.0	39.7	50.0	44.0	1.2	1750	41
7	35.8	70.1	5.7	30.3	36.0	55.0	45.0	1.3	1750	40
8	34.9	70.2	8.2	23.2	31.4	66.0	48.0	1.3	1749	39
As-Built Performance at Rated Speed=1750 rpm										
***** and Spec. Grav.=1.200 *****										
Pt No	Capacity (US gpm)	Total Head (ft)	Power (bhp)	Eff (%)	Notes					
1	0.0	46.5	0.85	0.0	Total Hd = Disc. Head + Vel. Head					
2	11.0	45.5	0.95	16.0	Eff=(CapxTotal HeadxSG)/(Powerx3960)					
3	22.0	43.2	1.26	22.8						
4	33.0	42.8	1.29	33.3						
5	46.8	41.0	1.38	42.1						
6	50.0	38.9	1.40	42.0						
7	55.0	36.0	1.45	41.4						
8	66.0	31.4	1.55	40.6						
Test Date: 04-19-2010										
Approved by:					Witnessed by:					

Model: 3196STX
Speed: 1750 RPM
Drawing No: 76793
Pattern No: 56208

Size: 1X1.5-8
Impeller Dia.: 6.125 As-Built

TEST DATE: 04-19-2010
AS-BUILT PERFORMANCE CURVE

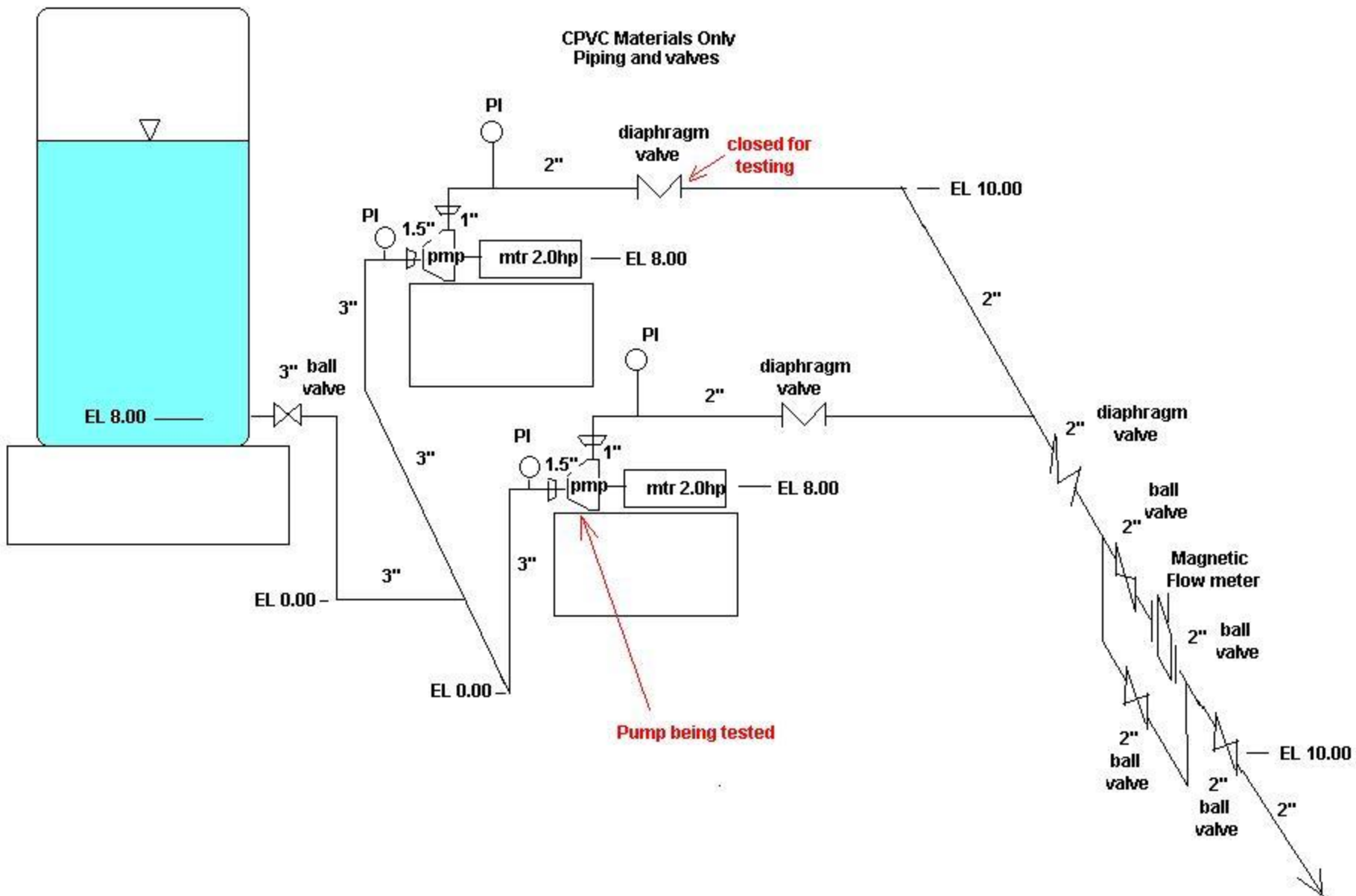
Customer:



Certified Test Data

BY:

Date:



Field Test #3

Initial height of water in tank = 3.25'

Final height of water in tank = 2.48'

Pt NO	Suct. Pres. (psi)	Suct. Pres. (head)	Water Temp (deg F)	Vel. Head (ft) D=0.957"	Disch. Head (psi)	Disch. Head (ft)	Total Head (ft)	Corrected Tdiff H (ft)	Capacity (US gpm)	Torque (in-lb)	Power (bhp)	Speed (rpm)	Eff (%)
1	1.30	3.00	65	5.98	8	18.48	21.46	23.46	44		0.69		37.84
2	1.20	2.77	65	5.42	9.5	21.95	24.60	26.60	41.9		0.76		37.05
3	1.18	2.73	65	4.97	10	23.10	25.34	27.34	40.1		0.76		36.29
4	1.18	2.73	65	4.46	11	25.41	27.15	29.15	38		0.79		35.31
5	1.18	2.73	65	4.00	12	27.72	29.00	31.00	36		0.82		34.28
6	1.17	2.70	65	3.16	14	32.34	32.80	34.80	32		0.88		31.95
7	1.17	2.70	65	1.98	15.75	36.38	35.66	37.66	25.3		0.89		27.21
8	1.18	2.73	65	1.29	17.5	40.43	38.98	40.98	20.4		0.92		23.08
9	1.20	2.77	65	0.33	19	43.89	41.45	43.45	10.4		0.88		12.93
10	1.30	3.00	65	0.00	19.5	45.05	42.04	44.04	0		0.00		-0.09

Field Test #4

Initial height of water in tank = 10.61'

Final height of water in tank = 9.83'

Pt NO	Suct. Pres. (psi)	Suct. Pres. (head)	Water Temp (deg F)	Vel. Head (ft) D=0.957"	Disch. Head (psi)	Disch. Head (ft)	Total Head (ft)	Corrected Tdiff H (ft)	Capacity (US gpm)	Torque (in-lb)	Power (bhp)	Speed (rpm)	Eff (%)
1	4.1	9.47	65	7.15	9.75	22.52	20.20	22.20	48.1		0.69		39.09
2	4.25	9.82	65	6.31	11.5	26.57	23.06	25.06	45.2		0.75		38.25
3	4.1	9.47	65	5.12	11.75	27.14	22.79	24.79	40.7		0.70		36.55
4	4.1	9.47	65	4.53	14	32.34	27.40	29.40	38.3		0.80		35.46
5	4.1	9.47	65	3.83	15.9	36.73	31.09	33.09	35.2		0.87		33.85
6	4	9.24	65	3.14	17	39.27	33.17	35.17	31.9		0.89		31.89
7	4	9.24	65	1.98	19.25	44.47	37.21	39.21	25.3		0.92		27.21
8	4.1	9.47	65	0.83	21.5	49.67	41.02	43.02	16.4		0.92		19.30
9	4.1	9.47	65	0.30	22.25	51.40	42.22	44.22	9.8		0.89		12.25
10	4.2	9.70	65	0.00	23	53.13	43.43	45.43	0		0.00		-0.09

 - Field measured
