

HCi Series

Touch Panel Operator Interface

Specification

Overview

HCi series is the operator interface to allow operator to access all controller functions through custom graphics and touch screen interface on color LCD display.

HCi 04 – M/T

M : 3.8", Mono LCD (BLUE)

T : 3.8", TFT LCD (256 colors)

Touch Screen (Analog/Resistive Type)

HCi 05 – S/T

S : 5.7", STN LCD (256 colors)

T : 5.7", TFT LCD (256 colors)

Touch Screen (Analog/Resistive Type)

HCi 08 – T

8.4", TFT LCD (256 colors)

Touch Screen (Analog/Resistive Type)

HCi 10 – T

10.4", TFT LCD (256 colors)

Touch Screen (Analog/Resistive Type)

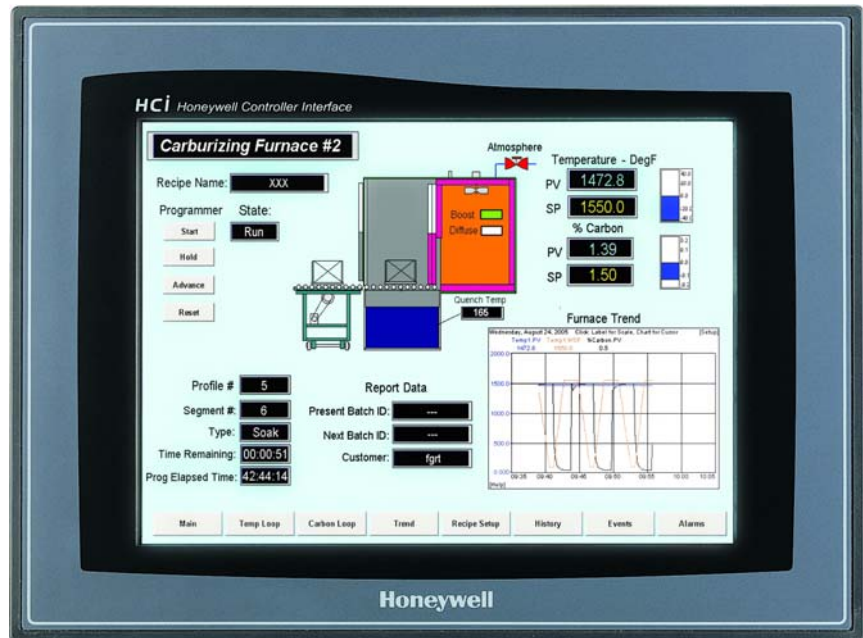
Features

• Color TFT LCD (HCi 04/05/08/10)

Color TFT LCD is standard on all HCi models. It is a high quality display with wide viewing angle. It provides up to 256 real colors.

• Touch Screen (Resistive Type)

Operator can effect changes to parameters by touching the screen directly. It offers much easier operation than the conventional keyboard.



• Processor - 32 bit RISC CPU

The HCi uses a 32 bit RISC CPU for high speed graphic processing

• IP65F Front Enclosure

Front face is IP65F rated to permit use in tough applications where the HCi is subjected to moisture, dust etc.

• Communication

RS-232C and RS-422 serial ports are standard features. Custom interface designs can be downloaded via RS-232C communication.

• Multi-Language Support

Language selection can be made on screen. Choices include English/Korean or English/Chinese

• HCi Designer

HCi Designer software is offered as standard package. Custom designed graphics can be variables, and those variables can be selected without register addressing.

• Various Objects (Tags)

HCi designer offers the flexibility of such tools as numeral, lamp, message, alarm, keypad, graph, animation, window etc. It makes the design of monitoring and operating displays a breeze.

• Function Keys (HCi 04 only)

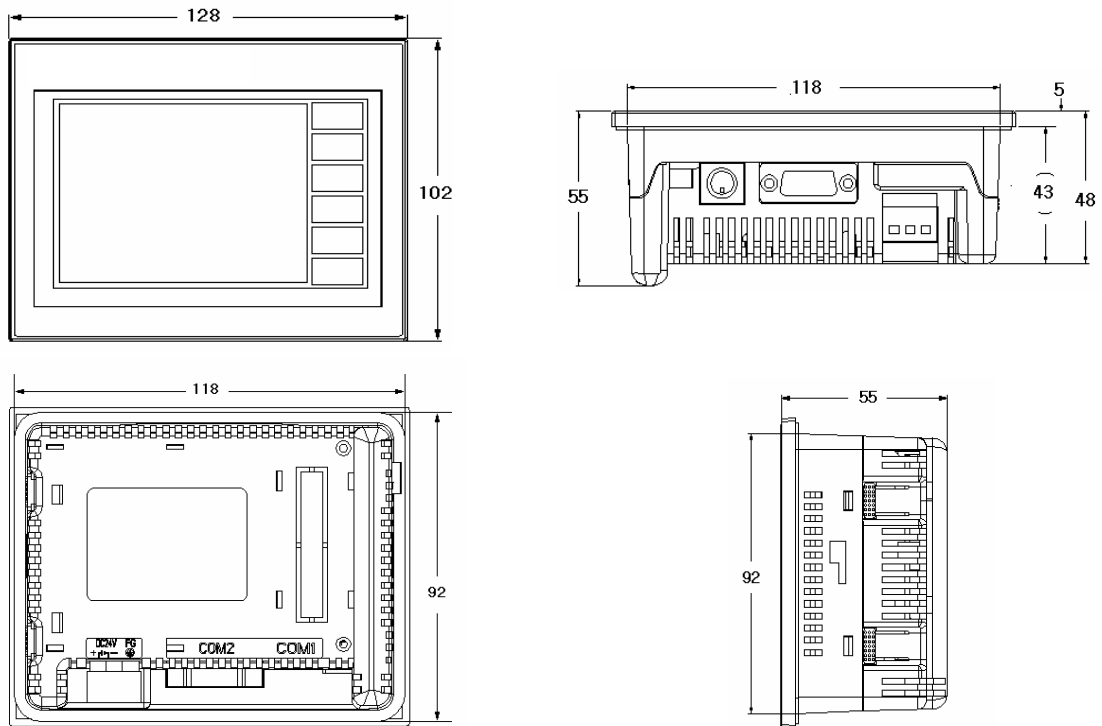
Function keys from F1 to F6 are available and can be used for increasing and decreasing numbers, moving cursors, Enter and Escape by default. The touch tag functions can be assigned to the keys.

Specifications

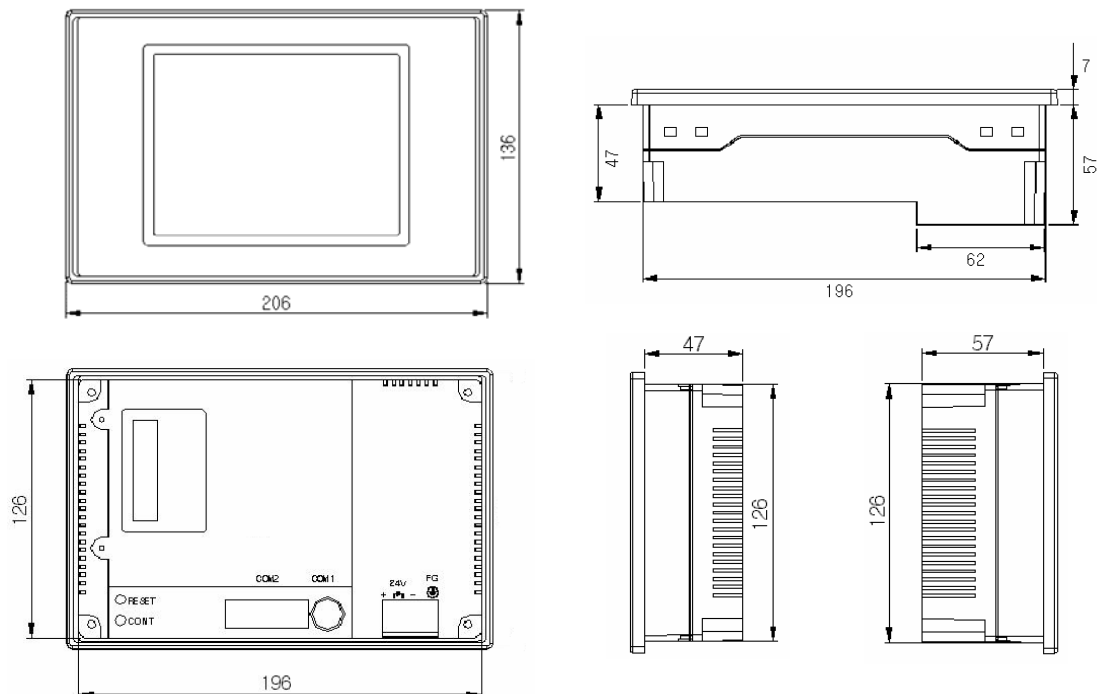
MODEL	HCI04-M	HCI04-T	HCI05-S	HCI05-T	HCI08-T	HCI10-T
Display						
Screen Size	3.8"		5.7 "		8.4 "	10.4"
Resolution	320 x 240		320 x 240		800 x 600	800 x 600
LCD Color	Mono (blue)	TFT 256	STN 256	TFT 256	TFT 256	TFT 256
Brightness	150 cd / m ²	400 cd / m ²	250 cd / m ²		150 cd / m ²	200 cd / m ²
Touch Type	Analog		Analog		Analog	Analog
Touch Cell	320 x 240		320 x 240		800 x 600	800 x 600
General						
CPU	32 bit RISC		32 bit RISC		32 bit RISC	32 bit RISC
Flash Memory	512KB	2MB	2MB		4MB	6MB
Operating Power	20 – 28 Vdc		20 – 28 Vdc		20 – 28 Vdc	20 – 28 Vdc 85 – 264 Vac
Power Consumption	Max. 8 W		Max. 12 W		Max. 12 W	Max. 20 W
Operating Temperature	0 – 50 °C		0 – 50 °C		0 – 50 °C	0 – 50 °C
Storage Temperature	-10 – 60 °C		-10 – 60 °C		-10 – 60 °C	-10 – 60 °C
Ambient Humidity	Below 85% RH		Below 85% RH		Below 85% RH	Below 85% RH
Approvals	UL, CE, FCC		UL, CE, FCC		UL, CE, FCC	UL (20-28 Vdc), CE, FCC
Front Enclosure	IP65F		IP65F		IP65F	IP65F
Insulation Resistance	10 MΩ		10 MΩ		10 MΩ	10 MΩ
Ground	Class 3 Grounding Resistance under 100Ω		Class 3 Grounding Resistance under 100Ω		Class 3 Grounding Resistance under 100Ω	Class 3 Grounding Resistance under 100Ω
Noise Endurance (impulse)	900 Vp-p (pulse width 1μs)		900 Vp-p (pulse width 1μs)		900 Vp-p (pulse width 1μs)	1200 Vp-p (pulse width 1μs)
Vibration Endurance (X-Y-Z 1G)	10 ≤ F ≤ 25 Hz		10 ≤ F ≤ 25 Hz		10 ≤ F ≤ 25 Hz	10 ≤ F ≤ 25 Hz
Communication						
Internal	RS-232C		RS-232C		RS-232C	RS-232C
External	RS-232C RS-422		RS-232C RS-422		RS-232C RS-422	RS-232C RS-422
Option						
CF-Card Interface	None		None	Yes	Yes	Yes

External Dimension

HCi 04

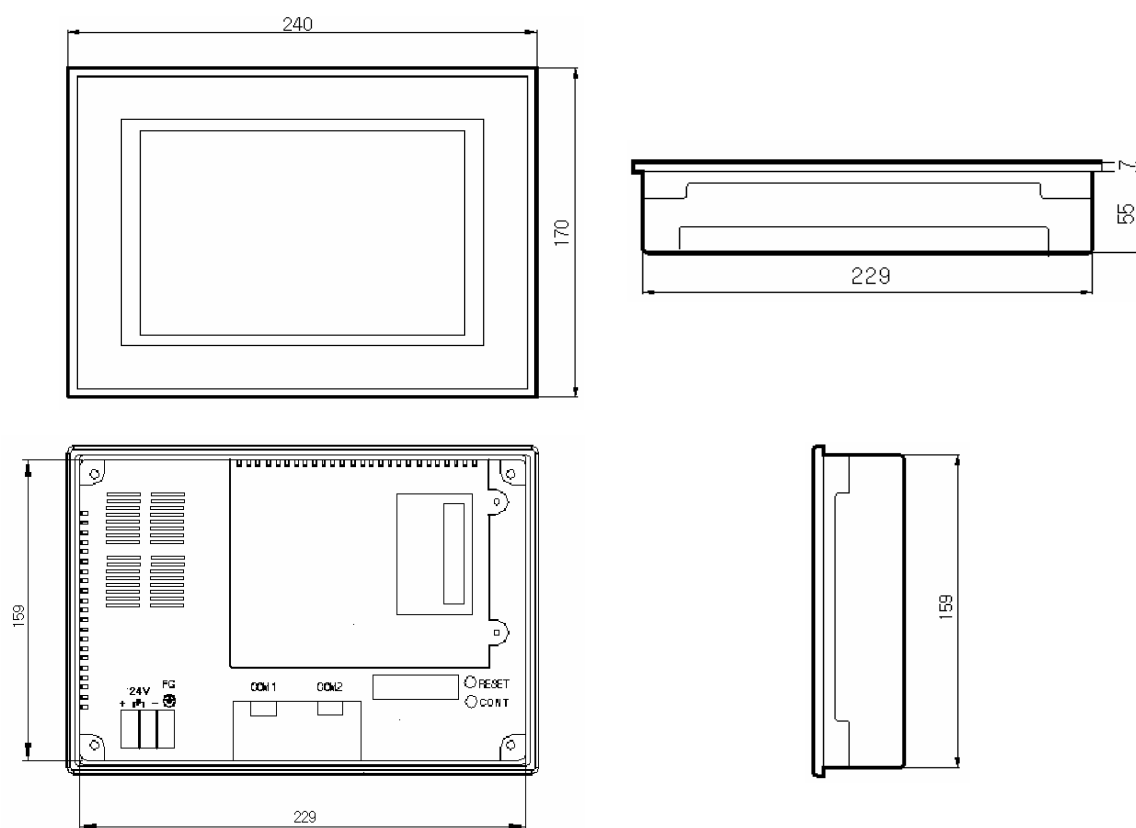


HCi 05

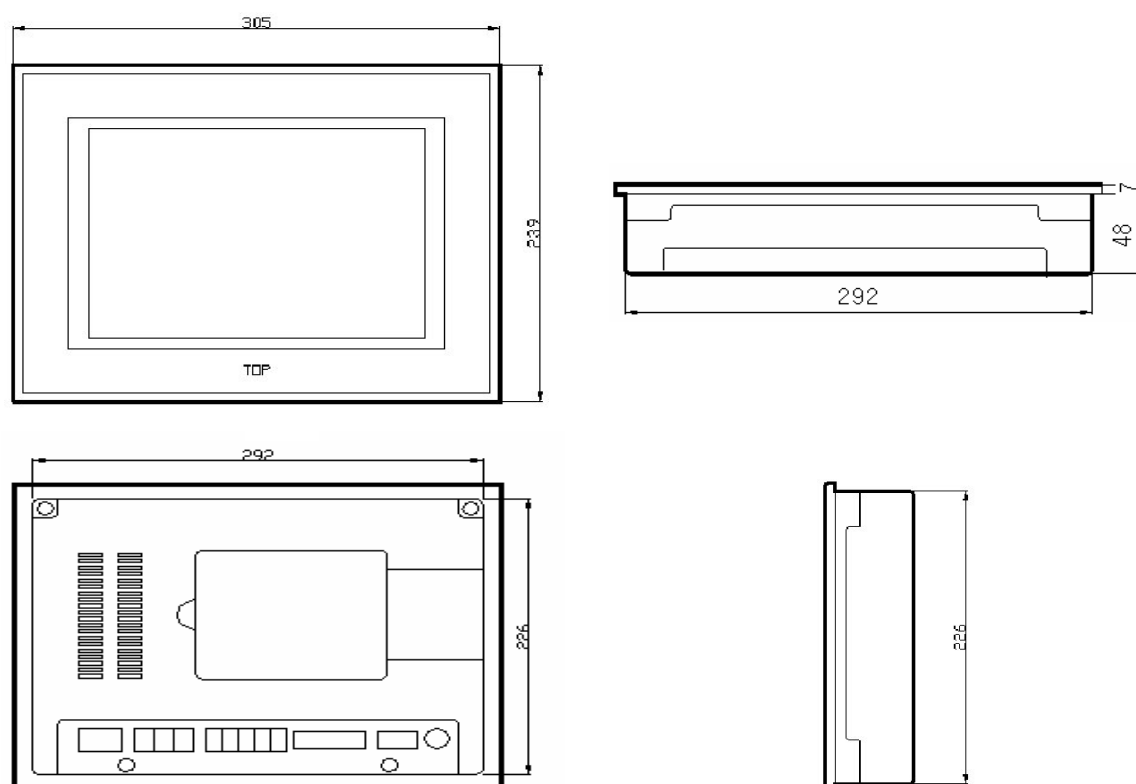


External Dimension

HCi 08



HCi 10



Panel Cutout

MODEL	HCi 04 – M/T	HCi 05 – S/T	HCi 08 - T	HCi 10 – T
External Dimension W (mm) x H (mm) x D (mm)	128 x 102 x 55	206 x 136 x 64	240 x 170 x 62	305 x 239 x 55
Panel Cutout W (mm) x H (mm)	121 x 95	199 x 129	231 x 161	295 x 229

Model Number Interpretation

Instruction

- Select the desired key number. The arrow to the right marks the selection available
- Make the desired selections from Table I through Table III using the column below the proper arrow.

A dot (•) denotes the availability

Key Number Table I Table II Table III
HCi - - -

KEY NUMBER

	Description	Selection	Availability			
Display Size	3.8"	HCi 04	↓			
	5.7"	HCi 05		↓		
	8.4"	HCi 08			↓	
	10.4"	HCi 10				↓

TABLE I - LCD TYPE & COMMUNICATION

LCD Type	HCi04	MONO LCD	M _	•			
		STN Color LCD	S _				
		TFT Color LCD	T _	•			
	HCi05/08/10	MONO LCD	M _				
		STN Color LCD	S _		•		
		TFT Color LCD	T _		•	•	•
Communication	RS-232C, RS-485		_ S	•	•	•	•
		RS-232C, RS-485, Ethernet	_ E				

TABLE II - Options

Data Storage	None	0 _	•	•	•	•
	Compact Flash Memory Adapter	1 _		a	•	•
Operating Power	20 to 28 Vdc	_ D	•	•	•	•
	85 to 264 Vac	_ A				b

TABLE III - Cable & Language

Cable	None	0 _	•	•	•	•
	RS-232C serial cable for Program download, 3m	1 _	•	•	•	•
Display Language	English, Chinese	_ C	•	•	•	•
	English, Korean	_ K	•	•	•	•

ORDERING INSTRUCTIONS

1. Orders may be placed only by model selection (not by part number)
2. Orders placed by model selection are systematically protected against incompatibility.

RESTRUCTIONS

Restruction Letters	Description
a	Available only with HCi05-TS
b	UL approved units are restricted to DC power only

Warranty / Remedy

Honeywell warrants goods of its manufacture as being free of defective materials and faulty workmanship. Contact your local sales office for warranty information. If warranted goods are returned to Honeywell during the period of coverage, Honeywell will repair or replace without charge those items it finds defective. The foregoing is Buyer's sole remedy and is **in lieu of all other warranties, expressed or implied, including those of merchantability and fitness for a particular purpose**. Specifications may change without notice. The information we supply is believed to be accurate and reliable as of this printing. However, we assume no responsibility for its use. While we provide application assistance personally, through our literature and the Honeywell web site, it is up to the customer to determine the suitability of the product in the application.

Specifications are subject to change without notice.

Honeywell Process Solution

HFS Asia Pacific
Honeywell Building
17 Changi Business Park Central 1
Singapore 486073

Honeywell

www.honeywell.com/ps