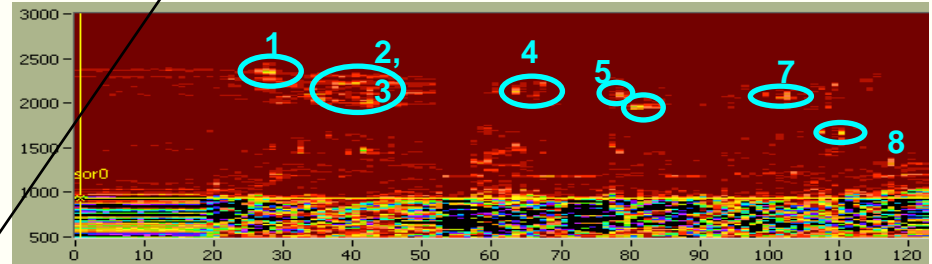
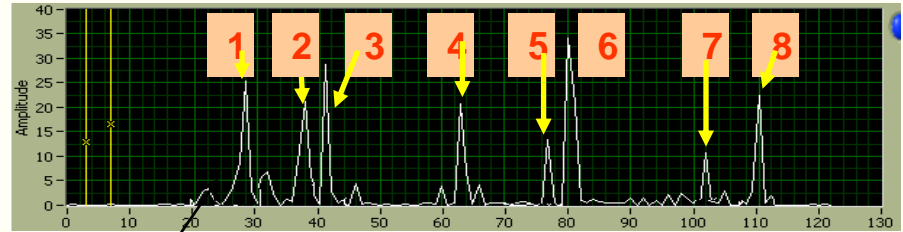
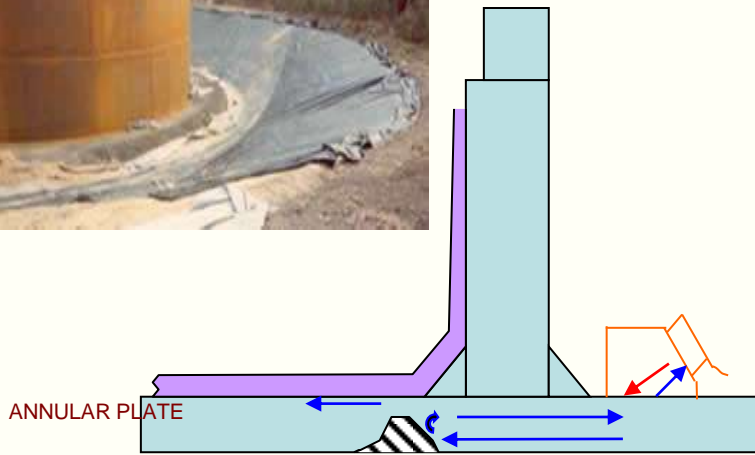
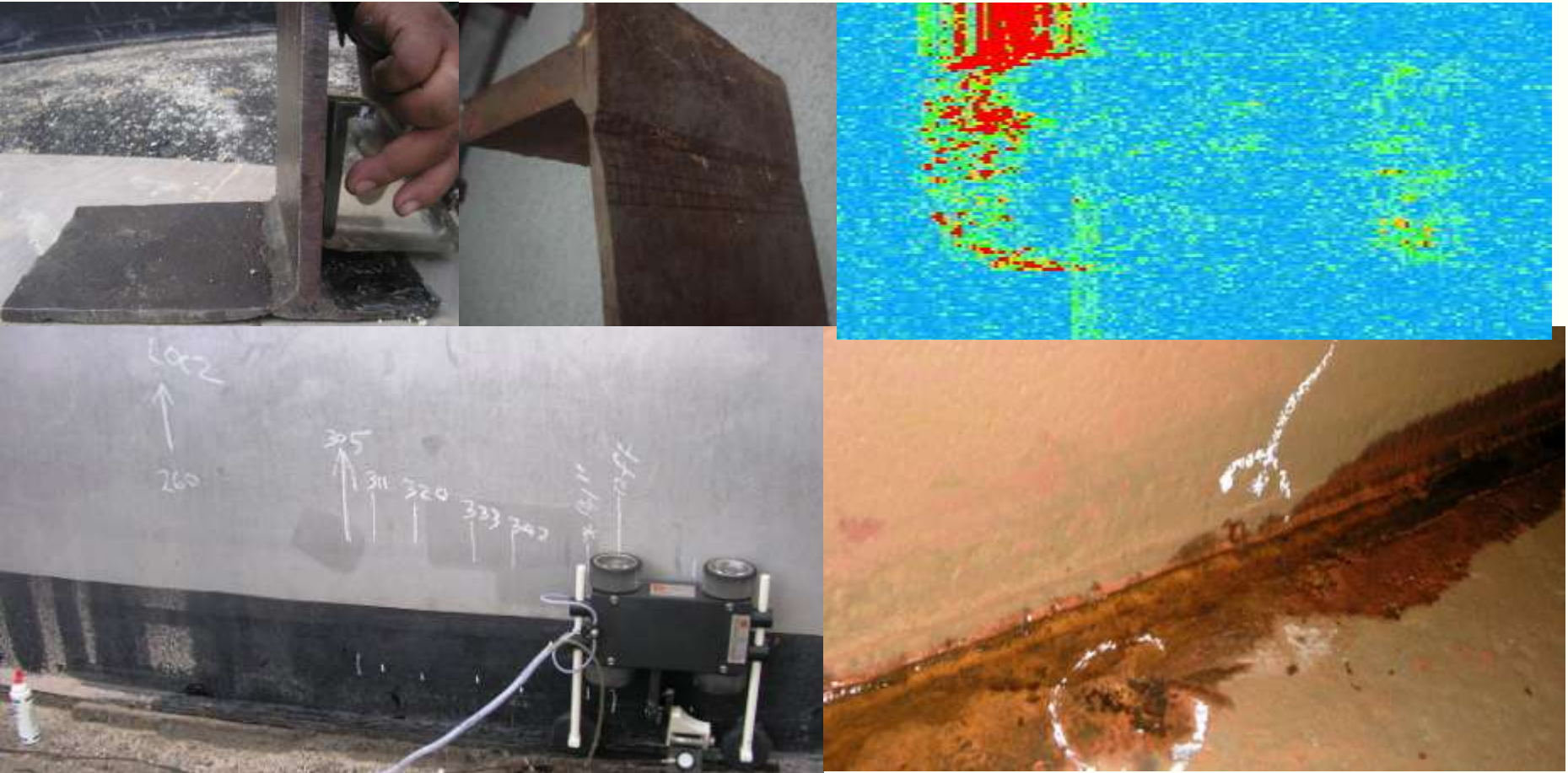


# Storage Tank Inspection-Groove like Corrosion in the Critical Zone- 2007



# Storage Tank Inspection- Corrosion ( Top side in critical zone)- 2008

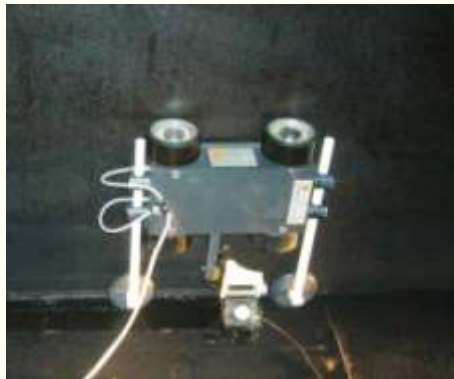
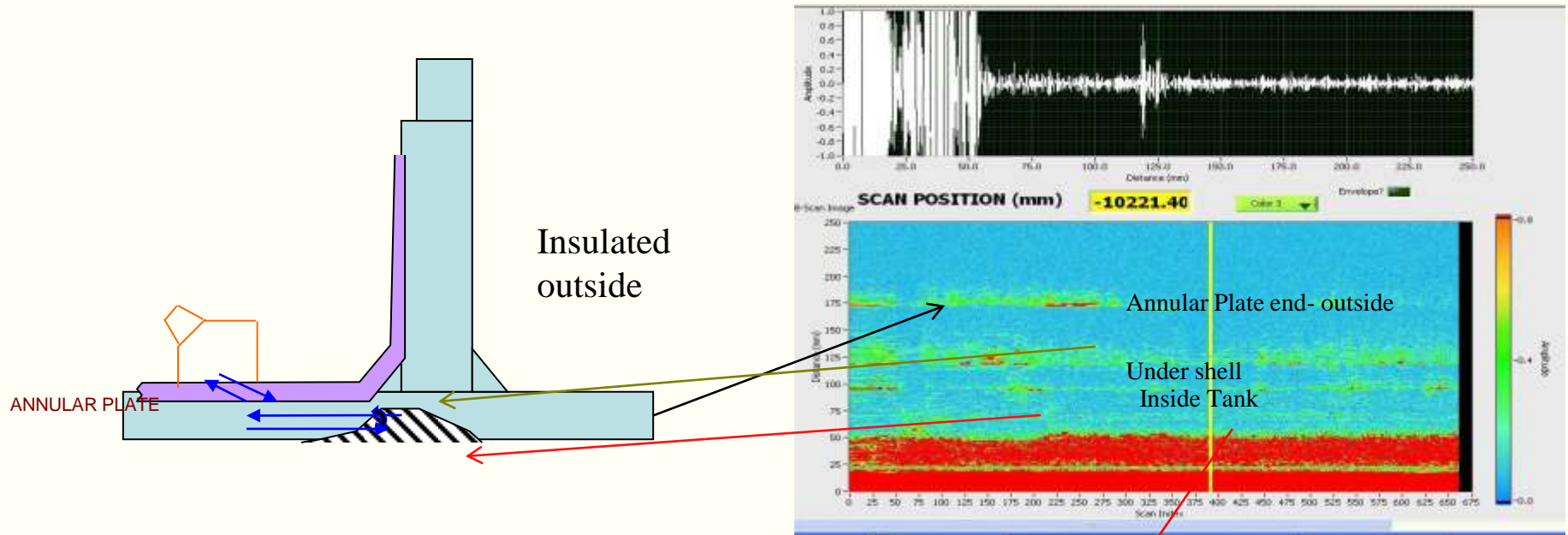




# Storage Tank Inspection- December 2008-Critical zone and Under shell plate corrosion



# Storage Tank Inspection- December 2008-Critical zone and Under shell plate corrosion





# Storage Tank Inspection- February 2009 -Crack at critical zone

