

Hydrostatic Valves

Hydrostatic Telescopic Bellmouth Valves are used to control the level of fluids in holding areas and regulate flows to adjacent areas such as filter beds, humus tanks or for sludge draw off.

Operation

The operation consists of an adjustable tube with integral bellmouth moving inside a fixed outer vertical tube mechanically attached to the draw-off pipe. The adjustable tube is raised and lowered either manually or is electrically operated. This can be achieved from an external support or integral with the Hydrostatic Valve as per customers' requirements. The gland seal is arranged between the sliding tube and the stand pipe.

Features & Materials

Waterfront Engineering Services Ltd offer a range of Hydrostatic Valves for Nominal Pipe Bore Diameters from 100mm to 600mm diameter.

The Stand Pipe and Bellmouth can be supplied in Stainless Steel grade SS316, SS304 material or Galvanised Mild Steel and Epoxy coated.

All Stainless Steels are to BS EN 10088:1995.

The Sliding Tube is rigid uPVC to BS3505 or Polyethylene.

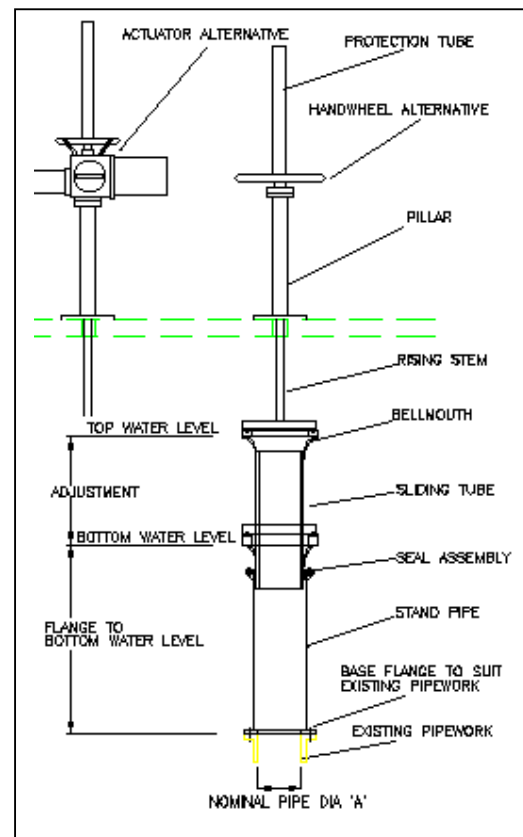
The Seal arrangement is provided by a graphite greasy Hemp gland to BS4371 between the fixed and sliding tubes.

The Operating Stem is a non-rotating rising stem and manufactured from either SS316 or SS304 stainless steel.

The Pillar can be manufactured from galvanised Mild Steel or SS316 or SS304 material to suite the customer.

All Fasteners are supplied to BS EN 10088:1995 Grade 1.4401 (SS316, A4)

Guide rods are provided in stainless steel material for guiding the Sliding Bellmouth Tube when the telescopic movement exceeds 1 metre.



Coping Brackets

Coping Brackets can be supplied in Stainless Steel Grade Ss316, SS304 material or Galvanised Mild Steel Epoxy coated, dependent on the outreach required.

Size Range

Nominal Pipe Dia 'A'

100mm, 150mm, 200mm, 250mm, 300mm
350mm, 400mm, 450mm, 500mm, 600mm