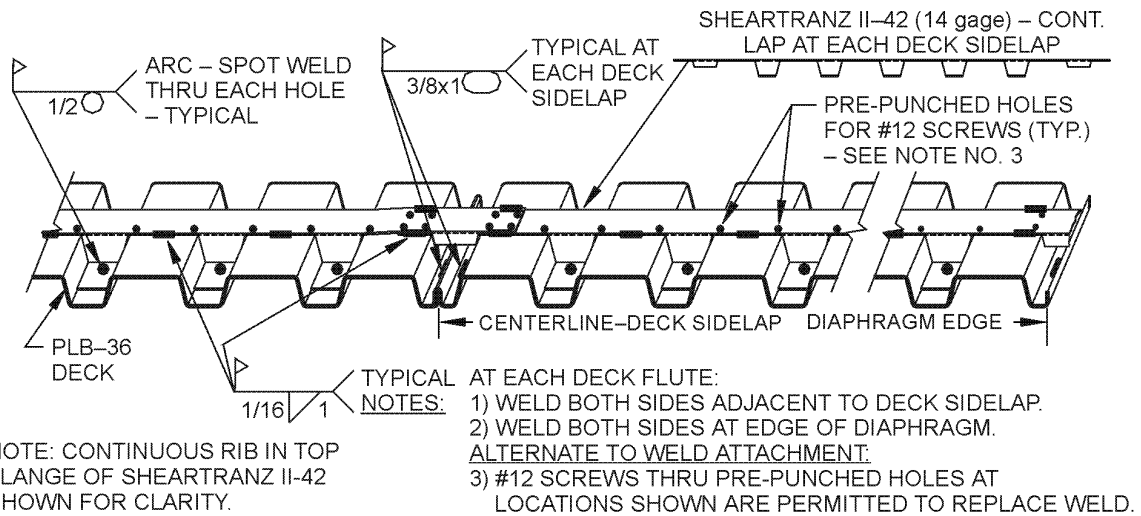


FIGURE 5—DETAILS FOR SHEARTRANZ® II FOR PLB™-36 &amp; SHEARTRANZ® II FOR HSB™-36 DECK

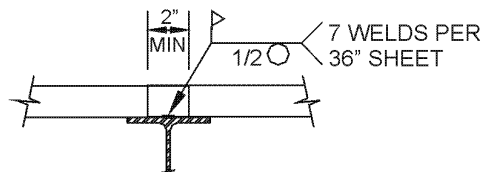
## SECTION 1:



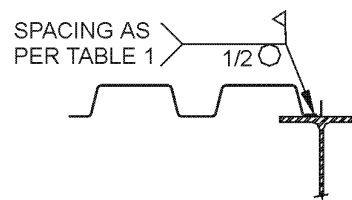
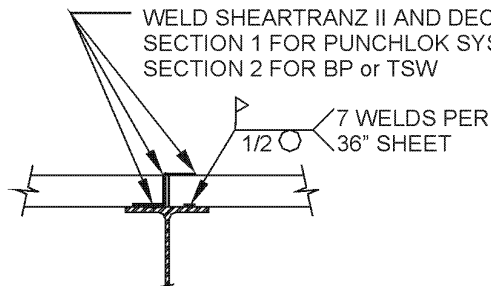
**SHEARTRANZ® II-42 FOR PLB™-36 DECK WITH PUNCHLOK™ SYSTEM**  
**with VSC SIDELAP CONNECTIONS (VSC)**

## TYPICAL DETAILS

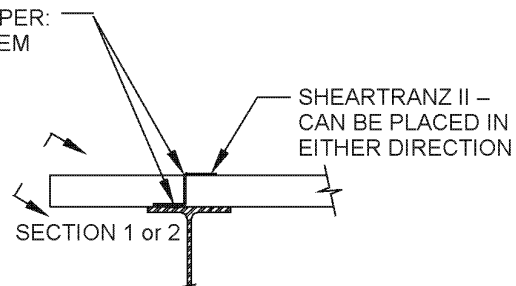
(Apply to either system.)



NOTE: LAP DECK MIN. 2" AT END LAPS.

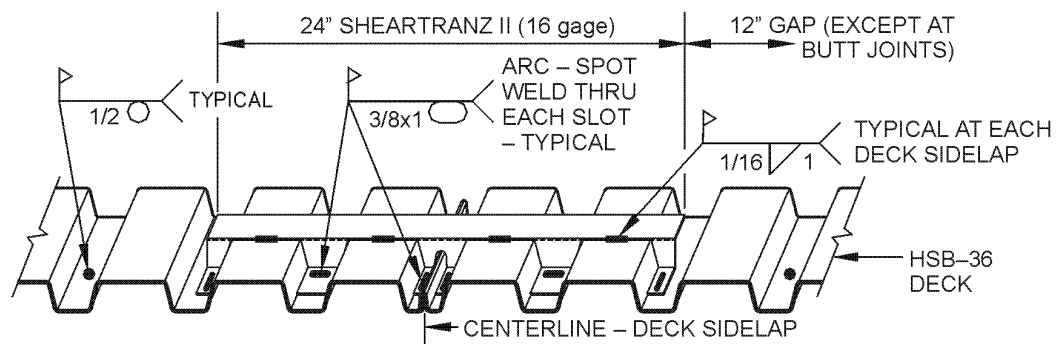
**TYPICAL INTERIOR SUPPORT****ATTACHMENT AT PARALLEL SUPPORTS****TYPICAL BUTT JOINT**

SHEARTRANZ II CONTINUOUS AT BUTT JOINTS.  
 WELD TOP FLANGE OF SHEARTRANZ II TO BOTH PIECES OF DECK AT BUTT JOINTS.

**DETAIL AT DIAPHRAGM PERIMETER**

DECK MAY BE CANTILEVERED OR STOP AT BEAM

## SECTION 2:



**SHEARTRANZ® II-42 FOR HSB™-36 DECK**  
**with BUTTON PUNCHED (BP) OR TOP SEAM WELD (TSW) SIDELAPS**