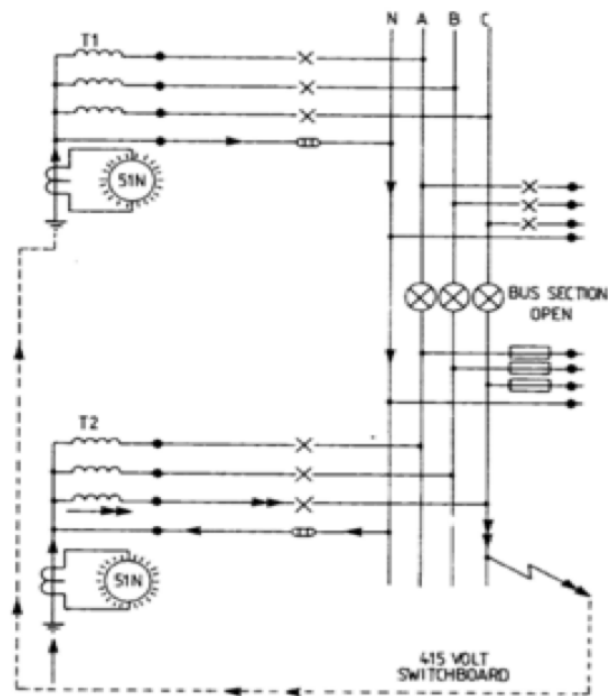


## PARALLEL TRANSFORMERS CT IN EARTH CONNECTION



*Figure 9*

Special attention is required for LV installations with multiple infeeds. Mal-tripping may occur if the CT's are located on the transformer earth connections and the system utilises a solid neutral busbar. The use of a four pole bus section circuit breaker will prevent the maloperation.